



WARNING: This Quick Start Guide is not a substitute for reading the operator's manual. To reduce the risk of injury or death, user must read and understand operator's manual before using this product.



QUICK START GUIDE

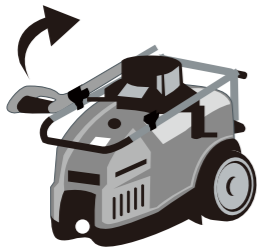
1600 PSI ELECTRIC PRESSURE WASHER

Model #: 51032

FOLD HANDLE

OPEN

1



• Open for use: Lift up on the handle bar pivoting it towards the back into an upright position until it clicks and locks into place.

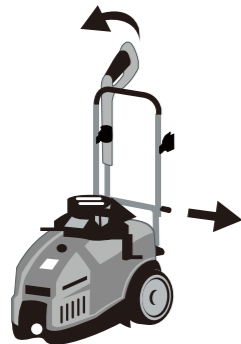
2



• Orientate the handle assembly into the holder as shown.

CLOSE

3



• Close for storage: Pull out on the locking pin at base of handle. Fold handle bar forward to front of unit.

4

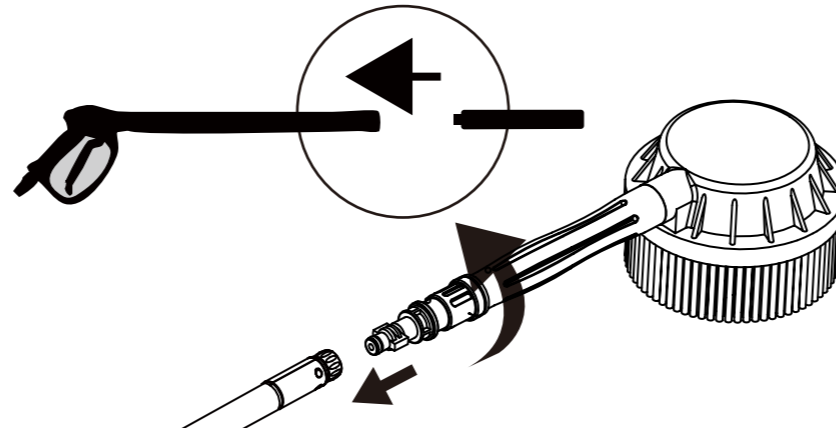


• Orientate the handle assembly as shown.

INSTALLING ROTATING BRUSH

- To assemble the rotating brush

Insert the brush wand into the pressure washer wand, and twist.



Missing parts, accessories or need a service center?

Do Not Return to Store

Call : 1-888-909-6757

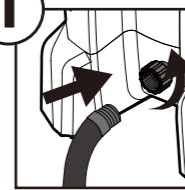
WWW.HYDROWORKSTOOLS.COM

Rev:00

Printed in China

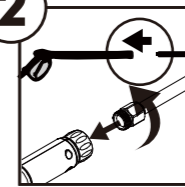
Set-up

1

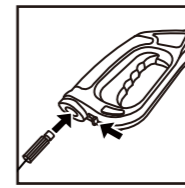


Connect garden hose to pressure washer water intake.

2

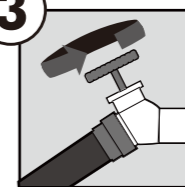


2a) Assemble pressure washer gun top half to bottom half



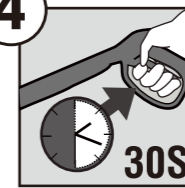
2b) Connect the high pressure hose to the trigger handle. Insert high pressure hose into trigger handle. Push tab lock toward handle to secure hose. Refer to manual for further details.

3



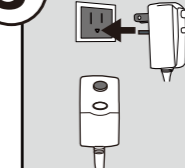
Turn on water at outlet

4



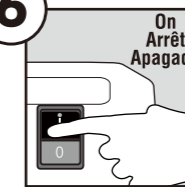
Run water hose for 30 seconds with the motor in OFF position. This helps drain air from the tank and lines.

5



Connect power cord directly to wall outlet. Do not use an extension cord.

6



Turn on Pressure Washer **IMPORTANT:** Ensure water outlet is On before turning power On to avoid damage to the pump.