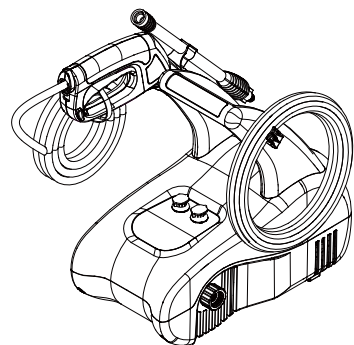
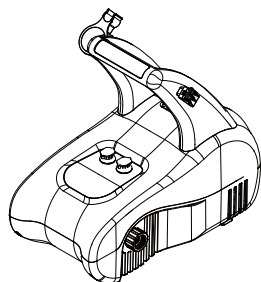
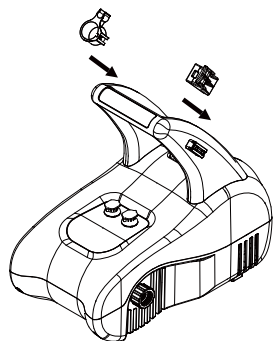


# 1 Operating Mode



# 2 Transportation Mode



Refer to manual for mounting instructions.



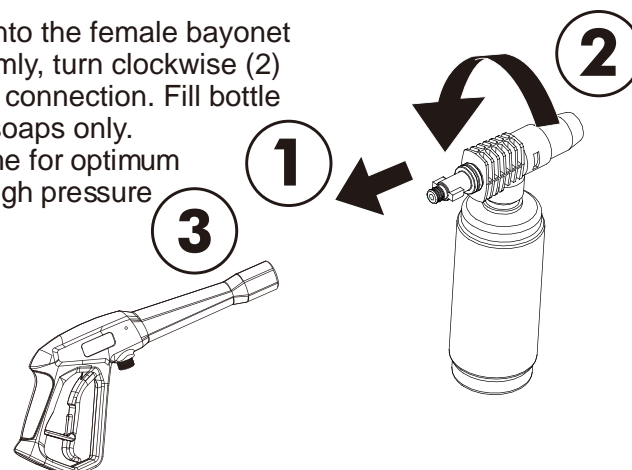
**WARNING:** This Quick Start Guide is not a substitute for reading the operator's manual. To reduce the risk of injury or death, user must read and understand operator's manual before using this product.





## QUICK START GUIDE 1500 PSI ELECTRIC PRESSURE WASHER Model #: 51092

### INSTALLING DETERGENT BOTTLE

Insert the male bayonet end (1) of the bottle into the female bayonet outlet (3) firmly. While pushing in the bottle firmly, turn clockwise (2) until tabs lock into place to ensure a leak-free connection. Fill bottle with approved pressure washer detergents / soaps only. Soap is applied under low pressure high volume for optimum performance. Soap cannot be applied under high pressure with this machine.



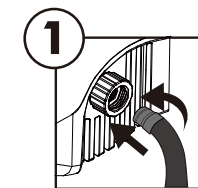
For use with pressure washer detergent only.

PRESSURE TIP	PRESSURE TIP APPLICATION
	<b>Red -Stream nozzle (0°)</b> The Red 0 degree tip provides a straight line of spray. It provides the highest amount of pressure. It is best used for removing hard, stuck-on grime or dirt.
	<b>Green - Narrow fan tip (25°)</b> The Green pressure washer tip provides high versatility with its 25 degree angle tip. Referred to as the washing tip, because it provides adequate pressure to remove dirt from surfaces, but is designed to not damage many surfaces. This pressure washer tip is designed for "sweeping" foliage or debris given its wide angle. This tip is versatile due to its wide area of cleaning and strong pressure application.

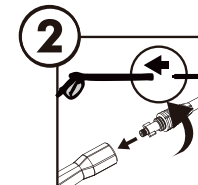
#### NOTE:

**AUTO ON/OFF SWITCH:** This Pressure washer is equipped with an Auto Start/Stop feature.  
To operate: Press power switch On (I). Pump will pressurize and shut down immediately.  
Once the trigger of the gun is depressed the unit will turn on.  
Unit will shut off and be in standby mode when trigger is released.

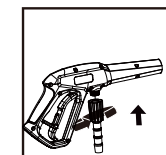
## Set-up



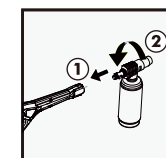
Connect garden hose to pressure washer water intake.



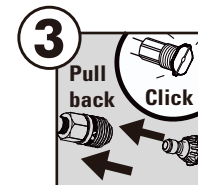
2a) Assemble pressure washer gun top half to bottom half



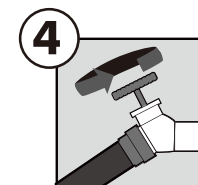
2b) Connect high pressure hose to trigger handle. Refer to manual for further details.



2c) Connect detergent tank to pressure washer gun.



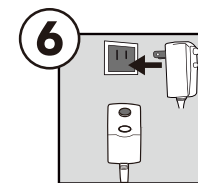
Connect desired pressure tip.



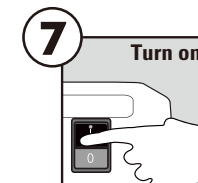
Turn on water at outlet



Run water hose for 120 seconds with the motor in OFF position. This helps drain air from the tank and lines.



Connect power cord to wall outlet  
Extension cord not recommended.



Turn on Pressure Washer  
**IMPORTANT:** Ensure water outlet is On before turning power On to avoid damage to the pump.



Missing parts, accessories or need a service center?

**Do Not Return to Store**

**Call : 1-855-470-2181**

**www.PowerWorksTools.com**

Rev:01 Printed in China