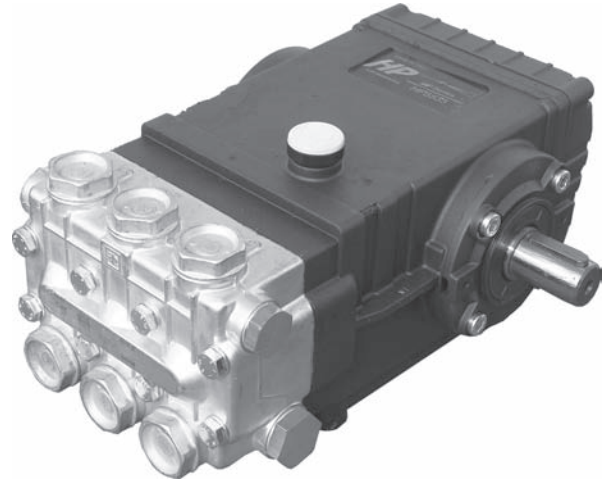


20 mm bore / 16 mm stroke

FEATURES

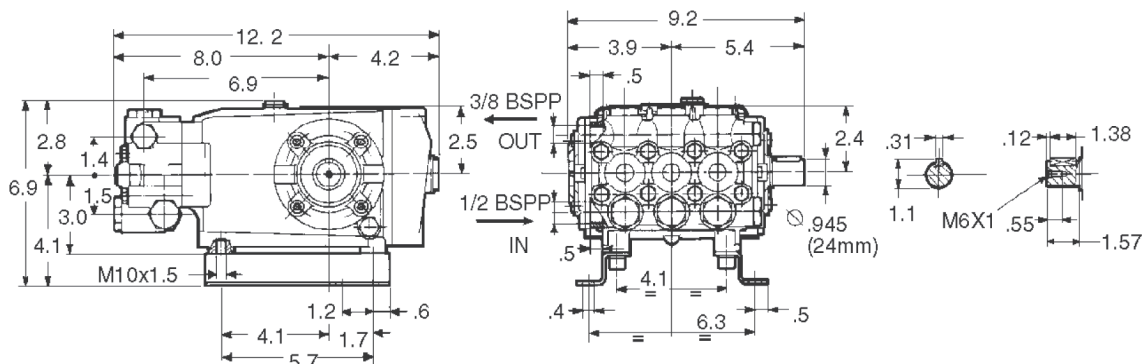
- The preferred pump frame in the pressure cleaning industry
- Forged brass manifold with an exclusive lifetime warranty
- Large-capacity, die-cast, anodized aluminum oil-bath crankcase
- Over-sized connecting rods for maximum life
- Heavy-duty tapered roller bearing
- Solid ceramic plungers with continuously lubricated packings
- Unitized stainless steel inlet and discharge valves



SPECIFICATIONS

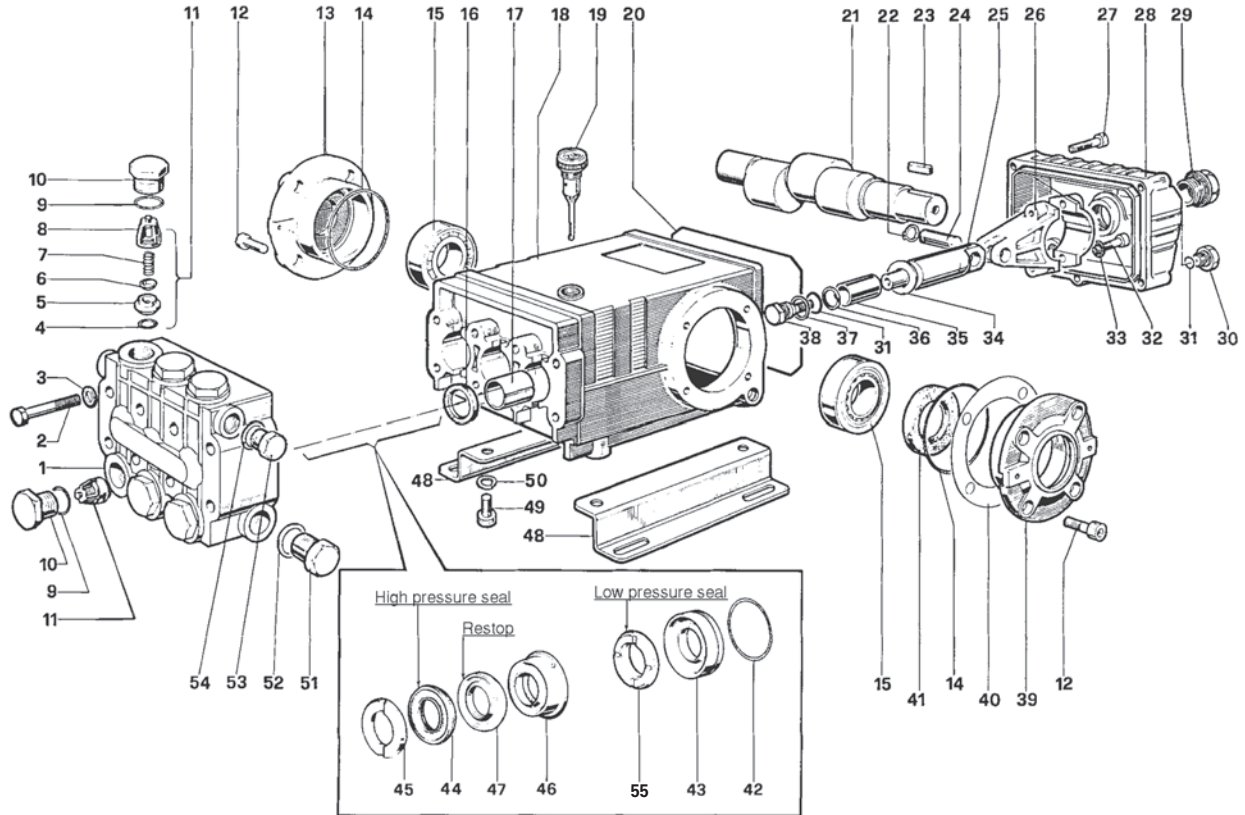
Pump Model	HP5535	
Maximum Volume (GPM)	4.5	5.6
Max. Discharge Pressure (PSI)	3500	3500
Maximum Pump Speed (RPM)	1125	1450
Maximum Inlet Pressure	125 PSI	
Maximum Inlet Vacuum	9 ft. water (7.9 in. Hg)	
Bore	.787 in. / 20 mm	
Stroke	.630 in. / 16 mm	
Crankcase Oil Capacity	40.6 oz.	
Maximum Fluid Temperature	165°F	
Inlet Port Thread	1/2-14 BSPP-F	
Discharge Port Thread	3/8-19 BSPP-F	
Shaft Diameter	.945 in. / 24 mm	
Weight	32 lbs.	
Dimensions	12.2 x 9.2 x 6.9 in.	

DIMENSIONAL DRAWING





20 mm bore / 16 mm stroke



PARTS LIST

ITEM PART NO.	DESCRIPTION	KIT NO.	QTY.	ITEM PART NO.	DESCRIPTION	KIT NO.	QTY.	ITEM PART NO.	DESCRIPTION	KIT NO.	QTY.
1	47120841	Manifold	1	20	90392200	O-Ring, Cover	1	39	47150022	Cover, Crankcase	1
2	99320600	Screw, M8 x 70	8	21	47021735	Crankshaft	1	40	97567800	Shim	2
3	96702000	Washer, M8.4	8	22	90055700	Ring, Snap	6	41	90164800	Seal, Oil	3
4	90384100	O-Ring, .674 x .103	1	23	91489000	Key	1	42	90361600	O-Ring, 1.364 x .070	10, 28
5	36200366	Seat, Valve	1	24	97738000	Pin, Wrist	3	43	47080570	Retainer, Packing	10, 28
6	36200176	Plate, Valve	1	25	47050554	Guide, Plunger	3	44	90270500	Packing	28, 69
7	94737600	Spring	1	26	47030001	Rod, Connecting	3	45	47100051	Ring, Head, M20	7, 28
8	36200251	Guide, Valve	1	27	99191200	Screw, M6 x 30	5	46	47216970	Intermed. Ring	28, 71
9	90384700	O-Ring, .797 x .103	4, 5	28	47160122	Cover, Crankcase	1	47	90270400	Restop Ring	28, 69, 71
10	98222000	Cap	4	29	97596800	Oil Indicator	1	48	47200074	Pump Feet	2
11	36703201	Valve Assembly	1	30	98204100	Cap	1	49	99364400	Screw, M10 x 18	4
12	99303900	Screw, M8 x 16	8	31	90358500	O-Ring, .426 x .070	6	50	96710600	Washer, M10.2	4
13	47150122	Cover, Crankcase	1	32	99309900	Screw, M8 x 35	6	51	98217600	Cap	1
14	90391300	O-Ring, 2.675 x .103	2	33	96701400	Washer, M8.4	6	52	96751400	Washer, M21.5	1
15	640047	Bearing, Roller	2	34	96728600	Washer, M14	6	53	98210000	Cap	1
16	90162500	Seal, Oil	2	35	47040409	Plunger, (20 mm)	3	54	96738000	Washer, M17.5	1
17	90912600	Bushing	3	36	90506700	Ring, Back-up	6	55	90271000	Seal, Low Press., 20mm	28, 69
18	47010522	Crankcase	1	37	96728000	Washer	6				
19	98210600	Oil Dip Stick	1	38	47219566	Screw, Plunger	6				

REPAIR KITS

KIT NO.	1	2	3	4	5	6	7	10	28	69	71
ITEM NO.s INCLUDED IN KIT	4, 5 6, 7, 8 (11)	16	41	9, 10	9, 10	31, 34, 36, 37, 38	45	42, 43	42, 43, 44, 45, 46, 47, 56	44, 47, 56	46, 47
NUMBER OF ASSEMBLIES IN KIT	6	3	2	6	6	3	6	3	1	3	3
NUMBER OF CYLINDERS KIT WILL SERVICE	3	3	-	3	3	3	3	3	1	3	3

TORQUE SPECS*

Position	Ft.-lbs.
2	22.1
10	73.7
12	14.7
27	7.3
29	13.2
30	14.7
32	14.7
38	14.7
49	29.4
51	29.4
53	29.4

*Decrease torque by 20% if threads are lubricated.