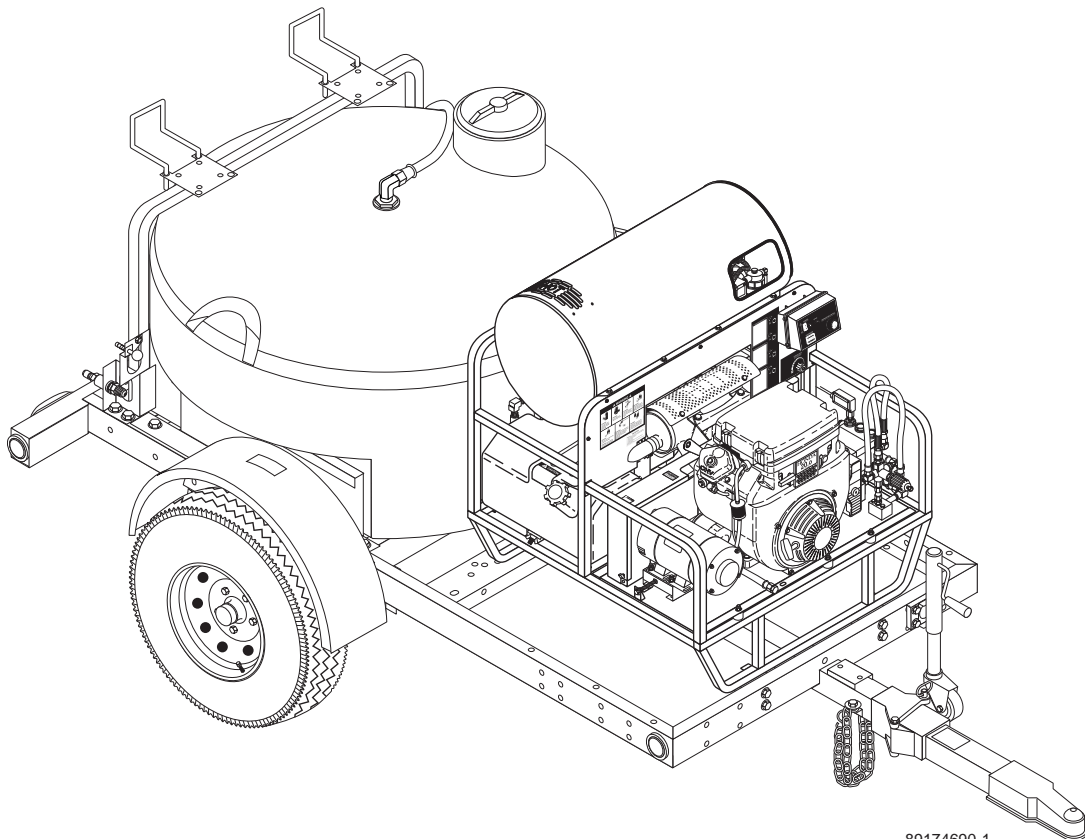


TRAILER SERVICE MANUAL

■ TRS-2500



89174690-1

To locate your local Kärcher Shark Commercial Pressure Washer Dealer nearest you,
visit www.karchercommercial.com or www.karchershark.com

8.917-469.0

CONTENTS

TRS-2500 Trailer Exploded View 4
TRs-2500 Trailer Exploded View, Parts List..... 5
Trailer with SSG Washer and Parts List.....6-7
Trailer with Classic Skid Washer8-9
Trailer with SGP Washer and Parts List..... 10-11
Optional Hose Reel Low Pressure 12
Optional Hose Reel Hlgh Pressure 13
Wiring Diagram..... 14-15

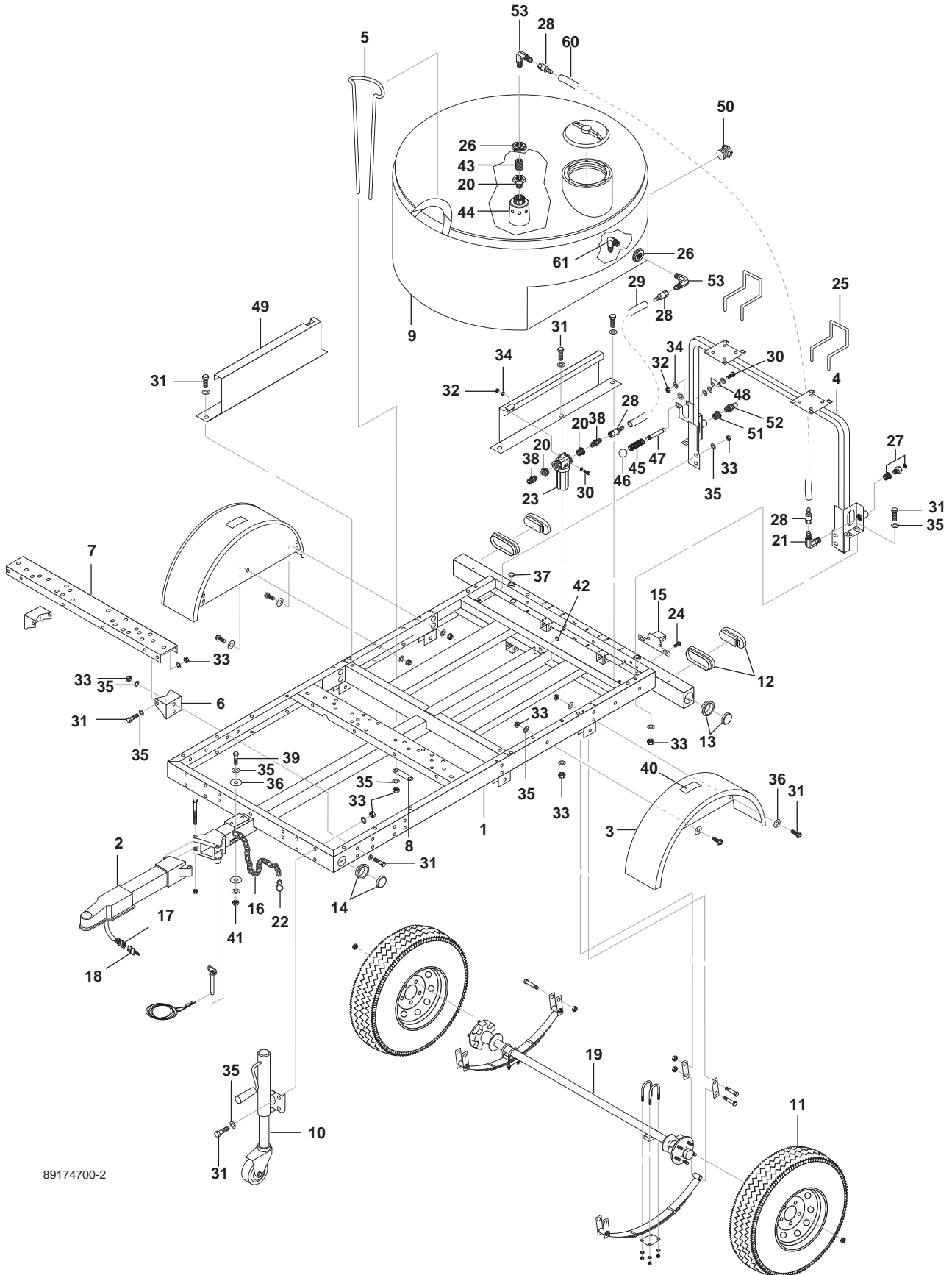
Model Number _____

Serial Number _____

Date of Purchase _____

The model and serial numbers will be found on a decal attached to the machine. You should record both serial number and date of purchase and keep in a safe place for future reference.

TRS-2500 TRAILER EXPLODED VIEW

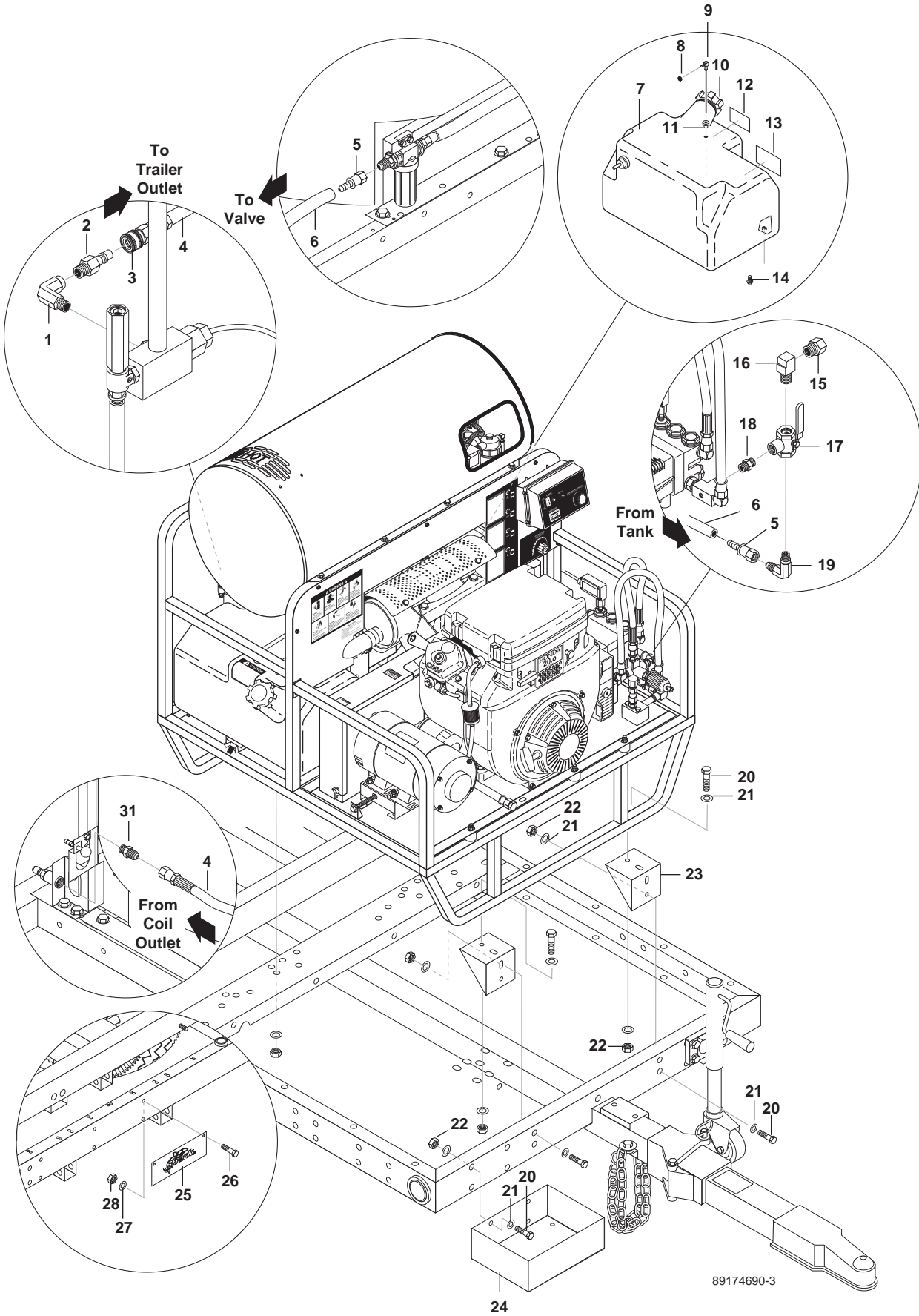


89174700-2

TRS-2500 TRAILER EXPLODED VIEW PARTS LIST

ITEM	PART #	DESCRIPTION	QTY	ITEM	PART #	DESCRIPTION	QTY
1	8.917-302.0	Wlmt, Frame, Trailer, 3000#	1	33	9.802-779.0	Nut 3/8"	40
2	8.917-303.0	Wlmt, Tongue, Hinged	1	34	9.802-802.0	Washer, 1/4" Flat SAE Zinc (Break Away)	10
	8.917-535.0	Wlmt, Tongue, Hinged, Hydraulic Coupler	1	35	9.802-807.0	Washer, 3/8" Flat	68
3	8.917-304.0	Fender, w/Back, 15", Painted	2	36	9.802-812.0	Washer, 3/8" x 1-1/2", Fender, SAE	14
4	8.917-305.0	Wlmt, Hoop, Hose Reel	1	37	8.706-738.0	Plug, 3/4", Hole	2
5	8.725-543.0	Rod, Tie-down, Tank	1	38	8.706-899.0	Nipple, 3/4" JIC x 3/4" Pipe	2
6	8.917-325.0	Bracket, Skid Mount, Adj.	2	39	8.718-661.0	Bolt, 3/8" x 1-1/2", NC, HH, SS	2
7	8.917-326.0	Channel, Skid Mount, Adj.	1	40	8.900-522.0	Label, CLP Warning, Do Not Stand or Step	2
8	8.917-341.0	Bar, Tank Tie-down	1	41	9.802-780.0	Nut, 3/8" Stainless, ESNA, NC	2
9	8.725-525.0	Tank, Water, 200 Gal	1	42	8.706-731.0	Bushing, 3/4" Snap Heyco	7
10	8.725-534.0	Jack, Swivel w/Caster, 1000 lb	1	43	8.706-369.0	Nipple, 3/4", PVC 80, Close	1
11	8.725-529.0	Wheel/Tire Assy, 15" ST205/75d15 TI	2	44	8.710-036.0	Float Valve 1" Hudson 150d 130 PSI	1
12	8.725-530.0	Lamp, Tail, 3-Way	2	45	8.718-592.0	Screw, 1/4" x 1-1/4" Shdr, 10-24 Thds	1
13	8.725-531.0	Lamp, Side Marker, Red	2	46	8.719-079.0	Knob, Black Plastic, 10-24 Thds	1
14	8.725-532.0	Lamp, Side Marker, Amber	2	47	8.719-112.0	Spring, 0.31OD x 1.0, Steel, Gen Wire J-1450	1
15	8.725-533.0	Lamp, License w/holder	1	48	8.917-463.0	Latch, Wand Holder	1
16	8.707-497.0	Chain, 5/16 Zinc Plated 2 x 45" Long	7.5 ft	49	8.917-319.0	Bracket, Alignment, Tank	2
17	8.725-536.0	Connector, Socket, 4-Flat	1	50	8.706-395.0	Plug, 2", PVC 80	1
	8.707-510.0	Connector, Socket, 7-Prong (Electric Brakes)	1	51	8.706-294.0	Bushing, 1/2" x 3/8", Steel	1
18	8.725-537.0	Plug, 4-Flat	1	52	9.802-171.0	Nipple, 3/8" x 3/8" NPT ST Male	1
	8.707-511.0	Plug, 7-Prong (Electric Brakes)	1	53	9.803-557.0	Elbow, 3/4 JIC x 3/4	2
19	8.725-538.0	Axle, 3500 lb., 57", Idler	1	54	8.725-541.0	▲ Hydraulic Line Kit (Hydraulic Brakes)	1
	8.725-540.0	Axle, 3500 lb., 57" Electric Brakes	1	55	8.725-707.0	▲ Bolt, 1/2" x 4-1/2" Grade 5 (Hydraulic Brakes)	2
	8.725-539.0	Axle, 3500 lb., 57" Hydraulic Brakes	1	56	8.718-829.0	▲ Nut, 1/2" ESNA (Hydraulic Brakes)	2
20	8.706-412.0	Bushing, 1" x 3/4" MT x FT, PVC80 Speers O	3	57	9.802-809.0	▲ Washer, 1/2" SAE (Hydraulic Brakes)	4
21	9.802-132.0	Elbow, 3/4" JIC x 1/2", 90°	1	58	8.912-403.0	▲ Bracket, Break Away (Break Away)	1
22	8.707-498.0	Hook, "S", 5/16" Zinc Plated	2	59	8.707-480.0	▲ Coupler, 2" Hydraulic Actuator (Hydraulic Brakes)	1
23	8.707-526.0	Strainer, 1" T Line, Trailers	1	60	9.802-261.0	Hose, 3/4 Push-on	51"
24	9.802-798.0	Screw, #10 x 1/2" Tek Hex Head"	2	61	8.706-890.0	Elbow, 1/2" JIC x 3/4"	1
25	8.719-946.0	Hanger, Hose	2			▲ Not Shown	
26	9.802-052.0	Bulkhead, 3/4" Polypro	2				
27	9.802-146.0	Swivel, 1/2" MP x 3/4" GHF w/Strainer	1				
28	9.802-152.0	Swivel, 3/4" SAE Fem, Push-on"	4				
29	9.802-261.0	Hose 3/4", Push-on	24"				
30	9.802-701.0	Bolt, 1/4" x 1" Hex Head Zinc Grade (Break Away)	3 6				
31	9.802-722.0	Bolt, 3/8" x 1-1/4", NC HH	34				
32	9.802-773.0	Nut, 1/4-20 ESNA NC (Break Away)	3 6				

TRAILER WITH SSG WASHER



89174690-3

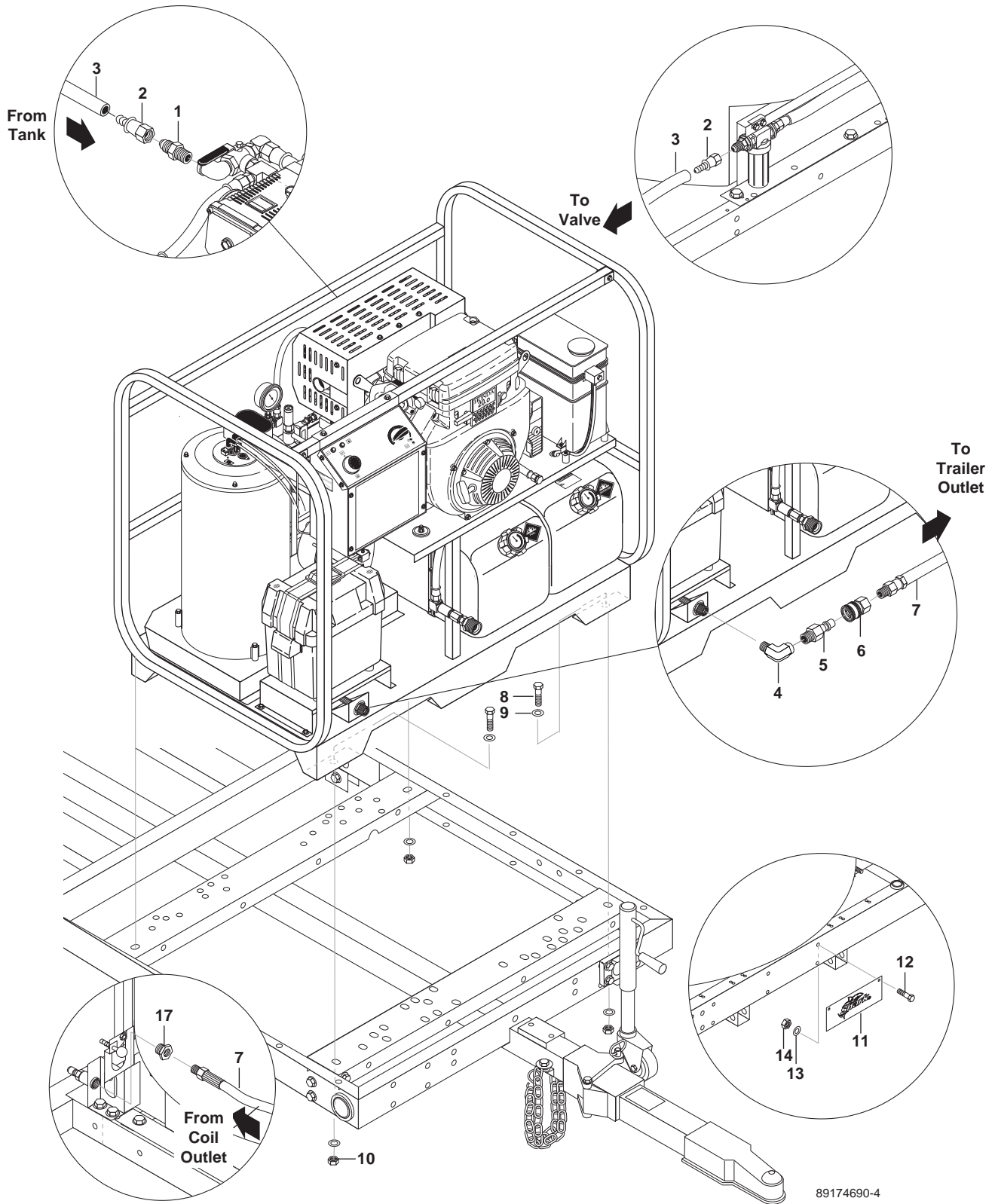
24

TRAILER WITH SSG WASHER PARTS LIST

ITEM	PART #	DESCRIPTION	QTY
1	8.706-207.0	Elbow, 3/8", Street 90°, Steel	1
2	9.802-171.0	Nipple, 3/8" x 3/8" NPT ST Male	1
3	9.802-166.0	Coupler, 3/8" Female, Brass	1
4	8.711-708.0	Hose, 1/2" x 90" 2 Wire, Pressure Loop	1
5	9.802-152.0	Swivel, 3/4" SAE Fem, Push-on	2
6	9.802-261.0	Hose 3/4"	3.417 ft
7	8.706-615.0	Tank, Fuel 8 Gal (All Models Except 600.0)	1
8	9.802-204.0	Clamp, Hose, CL13 (All Models Except 600.0)	1
9	9.802-056.0	Dip Tube Assy, Plastic, 10.75" Long (All Models Except 600.0)	1
10	9.802-089.0	Cap, Fuel Tank, Plastic H60-AV1 (All Models Except 600.0)	1
11	9.802-053.0	Bushing, Fuel Line, Rubber (All Models Except 600.0)	1
12	9.800-008.0	Label, Danger Cool Engine (All Models Except 600.0)	1
13	9.800-001.0	Label, This Tank For Gas Only (All Models Except 600.0)	1
14	9.802-754.0	Screw, 1/4" x 1/2" NC, Whiz Loc Flange (All Models Except 600.0)	4
15	9.802-146.0	Swivel, 1/2" MP x 3/4" GHF w/Strainer	1
16	8.706-829.0	Elbow, 1/2" Street, Brass	1
17	8.707-212.0	Valve, 1/2" Brass, 3-Way Ball	1
18	8.706-790.0	Nipple, 1/2" Close	1
19	9.802-132.0	Elbow, 3/4" JIC x 1/2" MPT, 90°	1
20	9.802-722.0	Bolt, 3/8" x 1-1/4", NC HH	12
21	9.802-807.0	Washer, 3/8" Flat	24
22	9.802-779.0	Nut 3/8"	12
23	8.916-565.0	Bracket, Mounting	2
24	8.917-495.0	Bracket, Battery Mount	1
25	8.917-328.0	Plate, Shark, S.S.	1
26	8.718-607.0	Bolt, Carriage, 1/4-20 x 3/4	2
27	9.802-802.0	Washer, 1/4" Flat SAE Zinc	2
28	8.917-294.0	Nut, 1/4-20 ESNA NC	2
29	9.802-204.0	▲ Clamp, Hose, CL13	1
30	9.802-799.0	▲ Screw, #14 x 1", Tek, Blk., Zinc	1
31	9.802-038.0	Nipple, 1/2" JIC x 1/2" Steel	1

▲ Not Shown

TRAILER WITH CLASSIC SKID WASHER



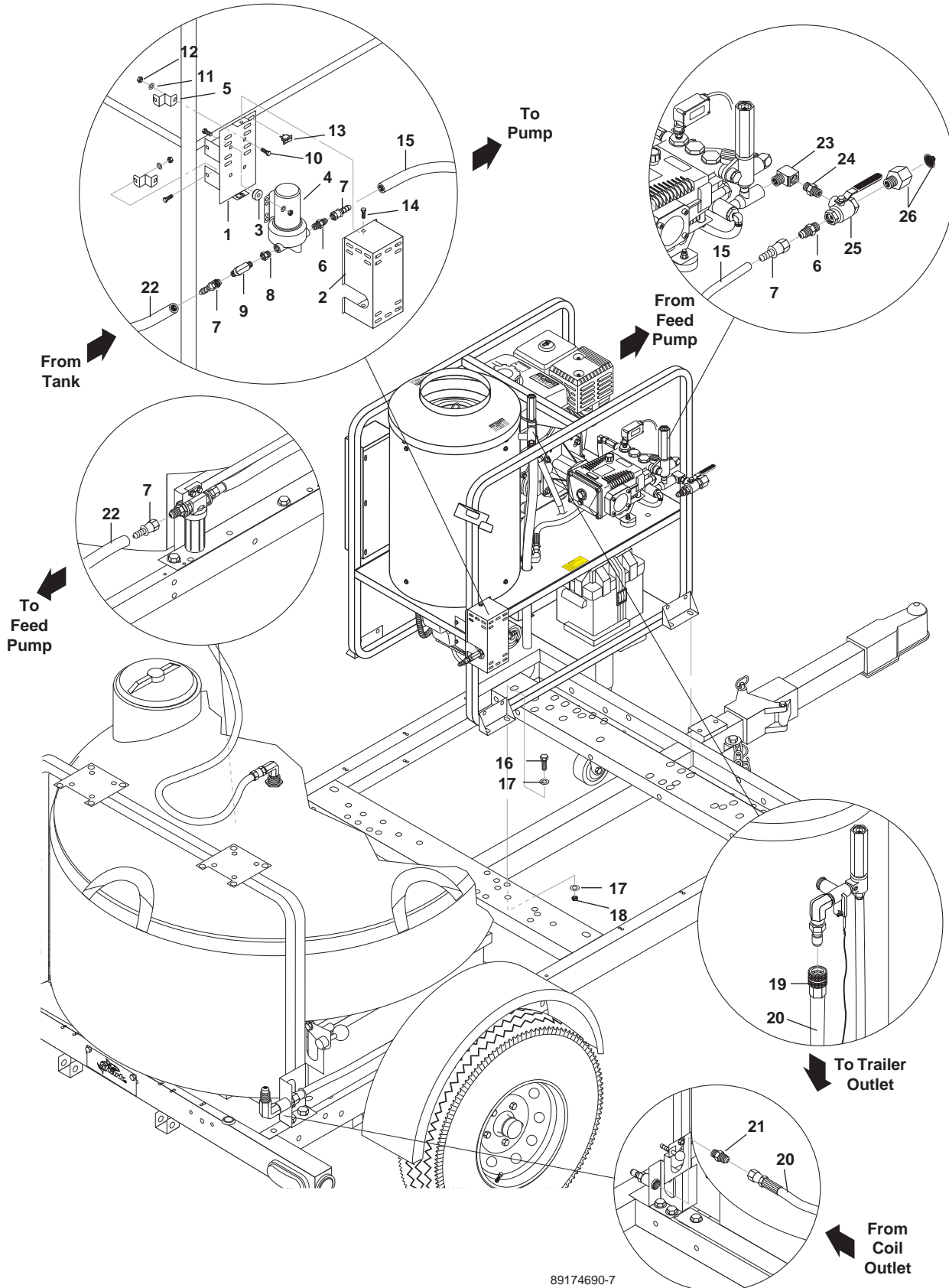
89174690-4

TRAILER WITH CLASSIC SKID WASHER PARTS LIST

ITEM	PART #	DESCRIPTION	QTY
1	8.706-899.0	Nipple, 3/4" JIC x 3/4" Pipe	1
2	9.802-152.0	Swivel, 3/4" SAE Fem, Push-on	2
3	9.802-261.0	Hose 3/4"	5 ft
4	8.706-207.0	Elbow, 3/8", Street 90°, Steel	1
5	9.802-171.0	Nipple, 3/8" x 3/8" NPT ST Male	1
6	9.802-166.0	Coupler, 3/8" Female, Brass	1
7	8.711-640.0	Hose, 3/8" x 125", 2 Wire, Swivel x Swivel	1
8	9.802-722.0	Bolt, 3/8" x 1-1/4", NC HH	4
9	9.802-807.0	Washer, 3/8" Flat	8
10	9.802-779.0	Nut 3/8"	4
11	8.917-329.0	Plate, Karcher, S.S.	1
12	8.718-607.0	Bolt, Carriage, 1/4-20 x 3/4	2
13	9.802-802.0	Washer, 1/4" Flat SAE Zinc	2
14	9.802-773.0	Nut, 1/4-20 ESNA NC	2
15	9.802-204.0	▲ Clamp, Hose, CL13	1
16	9.802-799.0	▲ Screw, #14 x 1", Tek, Blk., Zinc	1
17	8.706-294.0	Bushing, 1/2" x 3/8" Steel	1

▲ Not Shown

TRAILER WITH SGP WASHER



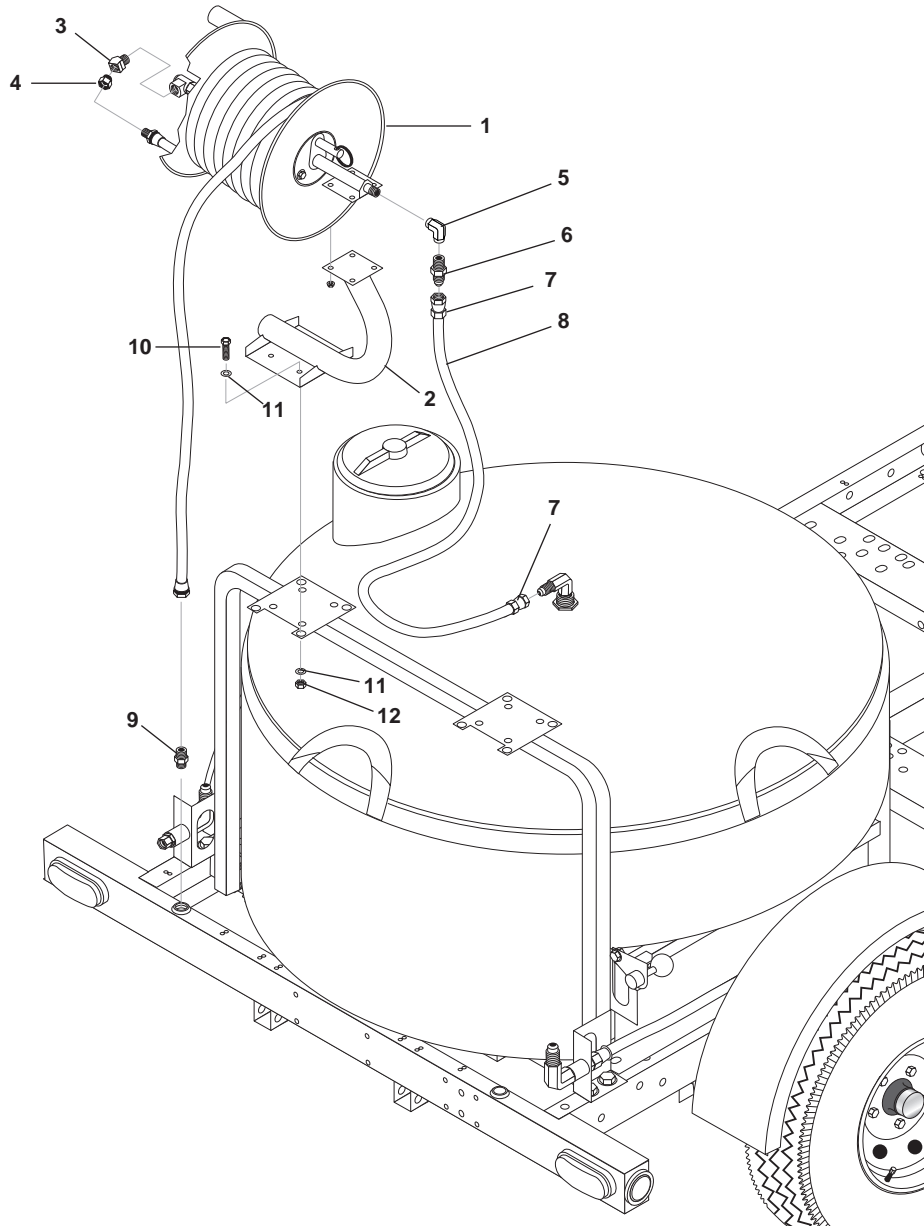
89174690-7

TRAILER WITH SGP WASHER PARTS LIST

ITEM	PART NO.	DESCRIPTION	QTY
1	8.917-561.0	Wlmt, Mount, Feed Pump	1
2	8.917-564.0	Cover, Mount, Feed Pump	1
3	8.706-510.0	Bumper, Rubber, 3/4" w/Washer	4
4	8.725-945.0	Pump, 4.0 gpm, 12V, 10A	1
5	8.915-292.0	Reel, Hose, Bracket, Mount Retainer	2
6	8.706-902.0	Nipple, 3/4" JIC x 1/2" Pipe	1
7	9.802-152.0	Swivel, 3/4" SAE FEM, Push-on	4
8	8.706-984.0	Adapter, 1/2" FPT x 1/2" MPT, Brass	1
9	9.802-132.0	Elbow, 3/4" JIC x 1/2" MPT, 90°	1
10	8.718-626.0	Bolt, 5/16"-18 x 1-1/4", NC Carriage Z	8
11	8.718-980.0	Washer, 5/16", Flat, SAE (780452)	8
12	9.802-776.0	Nut, 5/16", ESNA, NC"	8
13	9.802-453.0	Switch, Curvette RA901VB-B-1-V.Carling.	1
14	9.803-551.0	Screw, 5/16" x 3/4" Whiz Loc Flange	2
15	9.802-261.0	Hose, 3/4" Push-on, /ft	2
16	9.802-722.0	Bolt, 3/8" x 1-1/4", NC HH	8
17	9.802-807.0	Washer, 3/8", SAE, Flat Zinc	16
18	9.802-779.0	Nut, 3/8", ENSA, NC	8
19	9.802-166.0	Coupler, 3/8" Female, Brass	1
20	8.711-708.0	Hose, 1/2" X 90" 2 Wire, Pressure Loo	1
21	9.802-038.0	Nipple, 1/2" JIC x 1/2" MPT, Steel	1
22	9.802-261.0	Hose, 3/4" Push-on, /ft	3
23	8.706-826.0	Elbow, 1/2" Street	1
24	8.706-797.0	Nipple, 1/2 Hex	1
25	8.707-212.0	Valve, 1/2" Brass, 3-way	1
26	9.802-146.0	Swivel, 1/2" MP x 3/4" GHF w/Strainer	1
27	9.802-204.0	▲ Clamp, Wire/tube, 0.750D	1
28	9.802-799.0	▲ Screw, #14 x 1", Tek, Blk., Zinc	1

▲ Not Shown

OPTIONAL HOSE REEL LOW PRESSURE 8.917-555.0



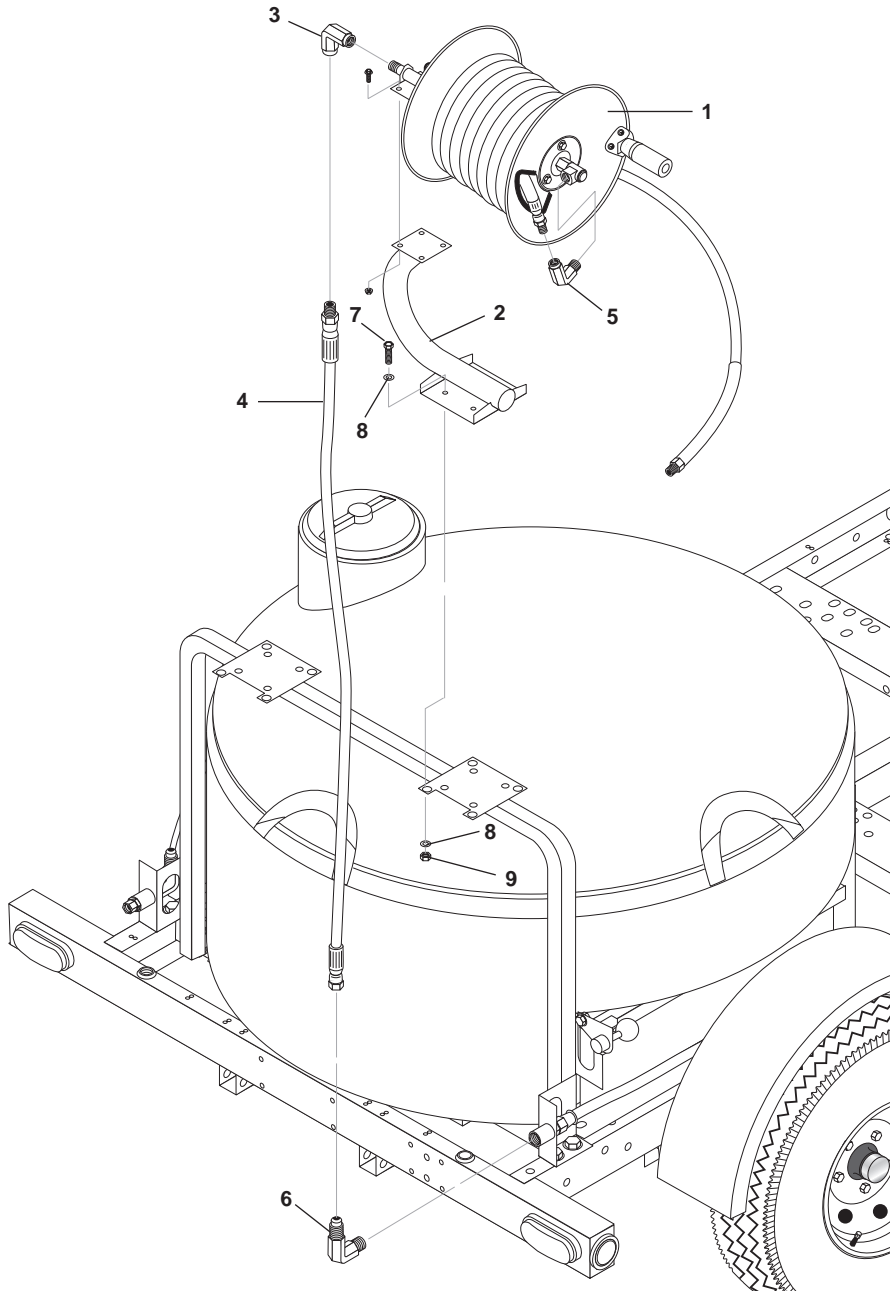
89174690-5

OPTIONAL HOSE REEL LOW PRESSURE PARTS LIST

ITEM	PART #	DESCRIPTION	QTY	ITEM	PART #	DESCRIPTION	QTY
1	8.711-191.0	Hose Reel, Bolt on 100' x 3/8" Non-Pivot	1	7	9.802-152.0	Swivel, 3/4" FEM, Push-on	2
2	8.711-883.0	Base, 4000 Reel Quick, Hardware Included	1	8	9.802-261.0	Hose, 3/4" Push-on, /FT	40"
3	8.706-834.0	Elbow 3/8" Street, 45 DGR"	1	9	8.706-968.0	Nipple, 1/2" MPT x 3/4"GHM	1
4	9.802-147.0	Swivel, 3/8" MP x 3/4" GHF W/Strainer	1	10	9.802-722.0	Bolt, 3/8" x 1-1/4"	4
5	8.706-820.0	Elbow, 1/2" Female, Brass	1	11	9.802-807.0	Washer, 3/8" SAE, Flat Zinc	8
6	8.706-902.0	Nipple, 3/4" JIC x 1/2" PIPE	1	12	9.802-779.0	Nut, 3/8", ESNA	4

Note: Garden hose not included

OPTIONAL HOSE REEL HIGH PRESSURE 8.917-554.0

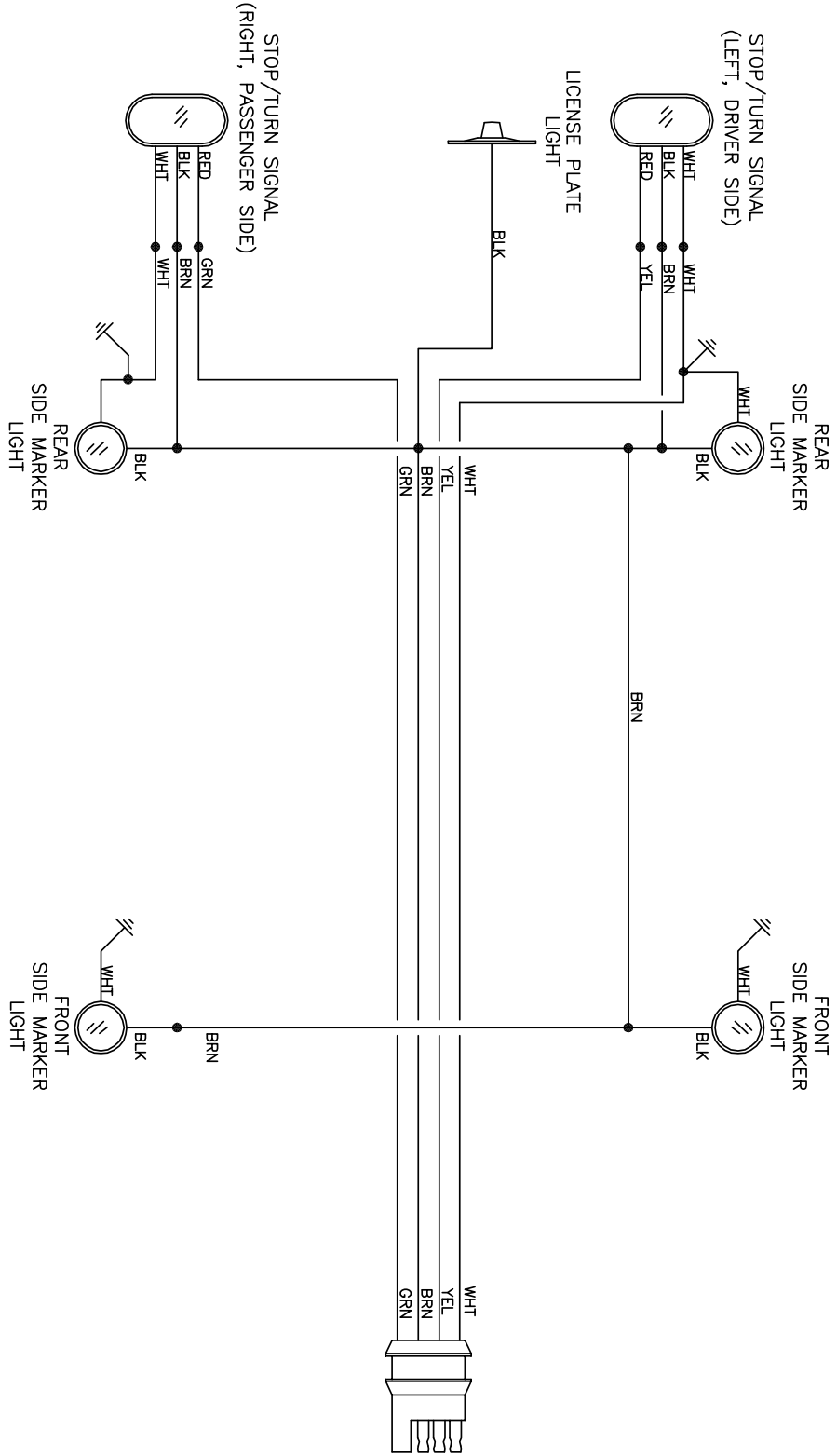


89174690-6

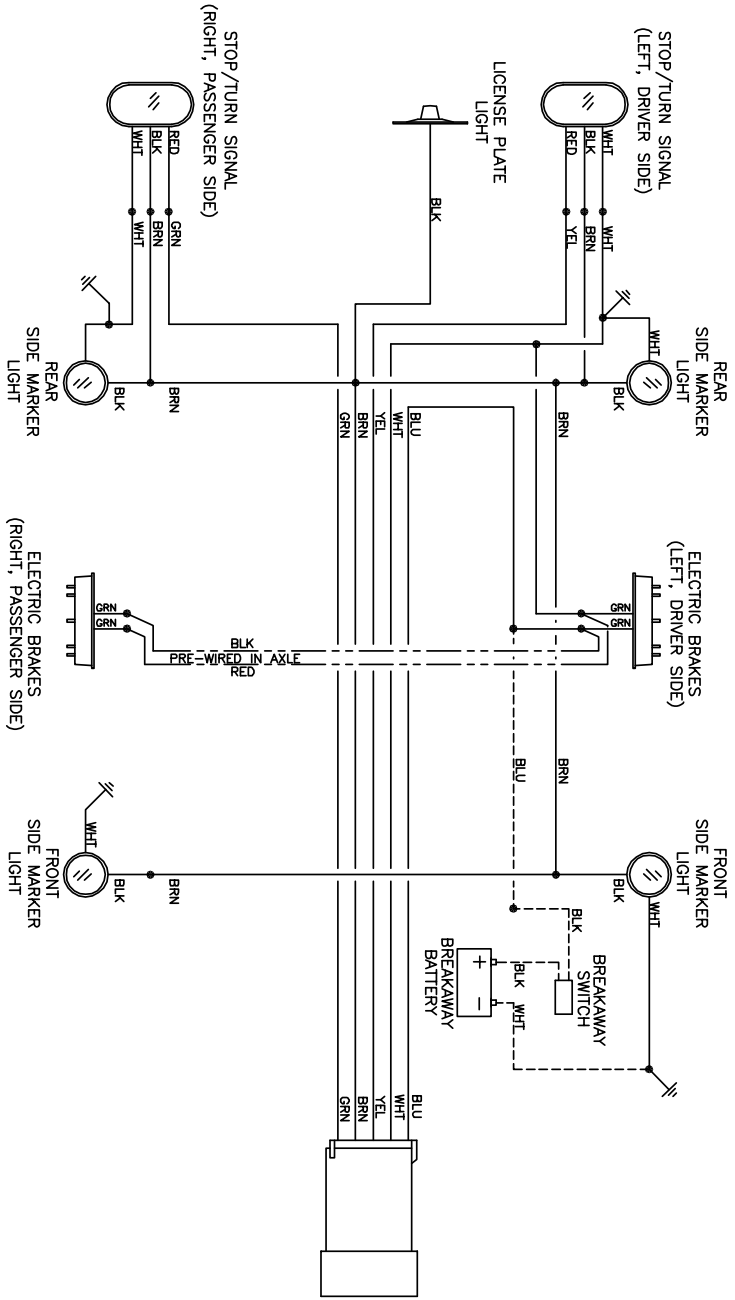
OPTIONAL HOSE REEL HIGH PRESSURE PARTS LIST

ITEM	PART #	DESCRIPTION	QTY	ITEM	PART #	DESCRIPTION	QTY
1	8.711-191.0	Hose Reel, Bolt on 100' x 3/8" Non-Pivot	1	7	9.802-722.0	Bolt, 3/8" x 1-1/4"	4
2	8.711-883.0	Base, 4000 Reel Quick, Hardware Included	1	8	9.802-807.0	Washer, 3/8" SAE, Flat Zinc	8
3	8.706-172.0	Elbow 1/2", 90° Female Pipe	1	9	9.802-779.0	Nut, 3/8", ESNA	4
4	8.711-675.0	Hose, 3/8" x 48, 2W, 1/2" FEM JIC x 1/2" MALE	1				
5	8.706-207.0	Elbow, 3/8" , Street, 90°, Steel	1				
6	9.802-040.0	Elbow, 1/2" , JIC , 1/2, 90°,	1				

WIRING DIAGRAM



WIRING DIAGRAM



- TRAILER
- (#1-WHITE) COMMON GROUND TO FRAME
 - (#2-BLUE) ELECTRIC BRAKE
 - (#3-BROWN) TAIL,RUNNING,LICENSE LIGHTS
 - (#4-N/A) AUXILIARY,DOME,CHARGE LINE, (NOT USED)
 - (#5-GREEN) RIGHT STOP & TURN LIGHTS
 - (#6-YELLOW) LEFT STOP & TURN LIGHTS
 - (#7-N/A) AUXILIARY (NOT USED)

- TOW VEHICLE
- (#1) COMMON GROUND
 - (#2) ELECTRIC BRAKE
 - (#3) TAIL,RUNNING,LICENSE LIGHTS
 - (#4) AUXILIARY,DOME,CHARGE LINE
 - (#5) LEFT STOP & TURN LIGHTS
 - (#6) RIGHT STOP & TURN LIGHTS
 - (#7) AUXILIARY (NOT USED)

