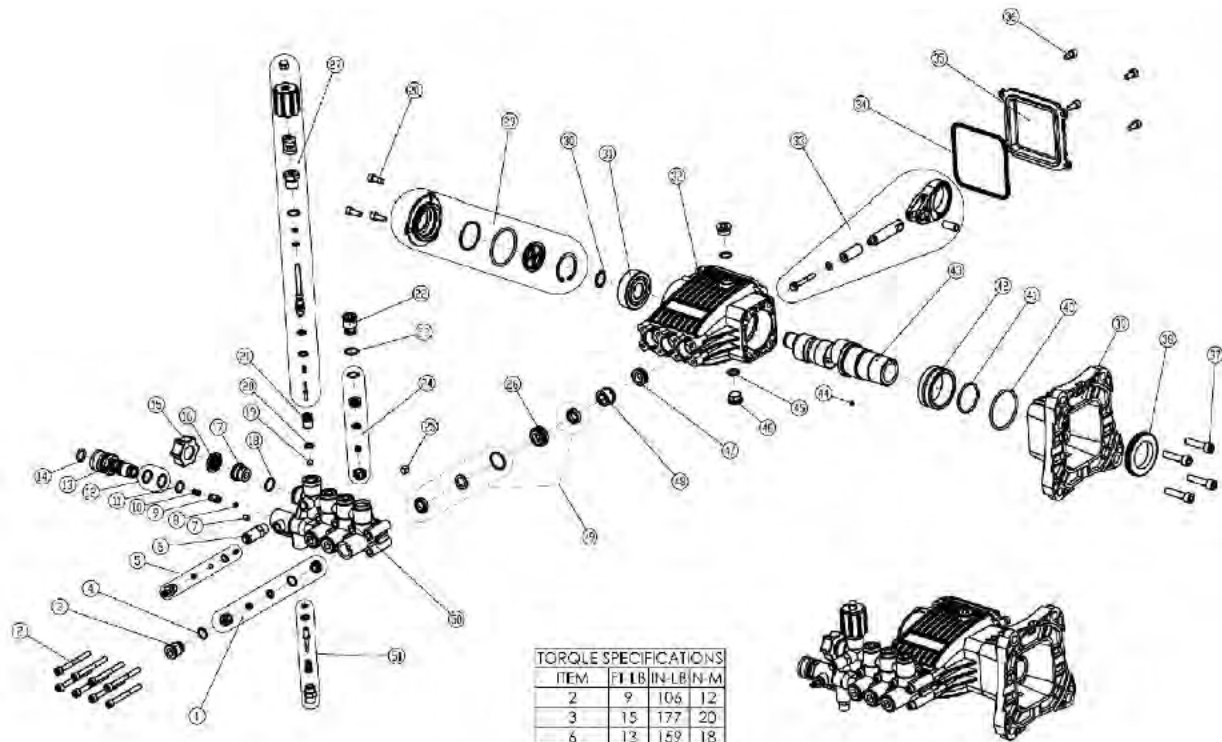


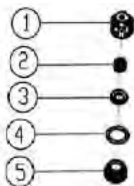
ITEM	PART NO.	DESCRIPTION	QTY
6.1	530004	PUMP, 4000PSI @ 3.3GPM HORIZONTAL TRIPLEX	1
6.2		BOLT, 3/8"-16 x 1 1/4"	4
6.3		WASHER, 3/8" SPLIT-LOCK	4
* 5	7105453	KEY, 1/4" x 1/4" x 1 1/2" SHAFT	1

\* NOT SHOWN



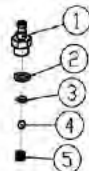
**TORQUE SPECIFICATIONS**

ITEM	FT-LB	IN-LB	N-M
2	9	106	12
3	15	177	20
6	13	159	18
13	15	177	20
17	15	177	20
22	15	177	20
27	15	177	20
28	7	80	9
36	7	80	9
37	18	221	25
44	3	35	4
46	13	159	18
51	13	159	18



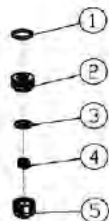
① PART NO. 7106691

OUTLET VALVE KIT		
ITEM	QTY	DESCRIPTION
1	3	VALVE CAGE
2	3	VALVE SPRING
3	3	VALVE DISK
4	3	VALVE TURNING
5	3	VALVE SEAT



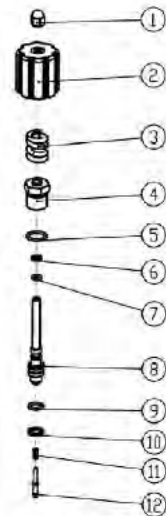
⑤ PART NO. 7104228

SOAP INJECTOR KIT		
ITEM	QTY	DESCRIPTION
1	1	HOSE BARB
2	1	O-RING
3	1	BALL SOAP VALVE
4	1	SPRING SOAP VALVE



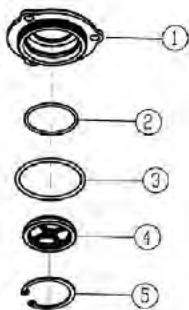
②④ PART NO. 7106708

INLET VALVE KIT		
ITEM	QTY	DESCRIPTION
1	3	O-RING
2	3	VALVE SEAT
3	3	VALVE DISK
4	3	VALVE SPRING
5	3	VALVE CAGE



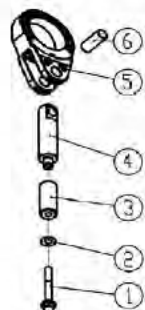
②⑦ PART NO. 7106711

UNLOADER KIT		
ITEM	QTY	DESCRIPTION
1	1	INLET UNLOADER ARM
2	1	INLET UNLOADER ADJUSTMENT
3	1	SPRING UNLOADER
4	1	CORE UNLOADER VALVE
5	1	O-RING
6	1	RING BACK-UP RING, R/UT
7	1	O-RING
8	1	POLE UNLOADER VALVE
9	1	O-RING
10	1	RING BACK-UP RING, R/UT
11	1	PIV. SPRING
12	1	PIV. UNLOADER



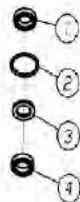
②⑨ PART NO. 7106709

CRANKCASE SIDE COVER KIT		
ITEM	QTY	DESCRIPTION
1	1	COVER SIDE
2	1	O-RING
3	1	O-RING
4	1	SIGHT GLASS
5	1	RING RETAINING



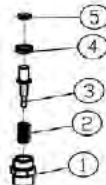
③③ PART NO. 7106718

CONNECTOR ROD KIT		
ITEM	QTY	DESCRIPTION
1	3	BOLT
2	3	GASKET
3	2	PLUNGER, SERVING
4	3	BASE PLUNGER HOLE
5	3	ROD, CONNECTING
6	3	PIV. CONNECTING ROD



④⑨ PART NO. 7106733

HIGH AND LOW PRESSURE SEAL		
ITEM	QTY	DESCRIPTION
1	3	SEAL, LOW PRESSURE
2	3	O-RING
3	3	RING, ANTEXT
4	3	SEAL, HIGH PRESSURE



⑤① PART NO. 7106628

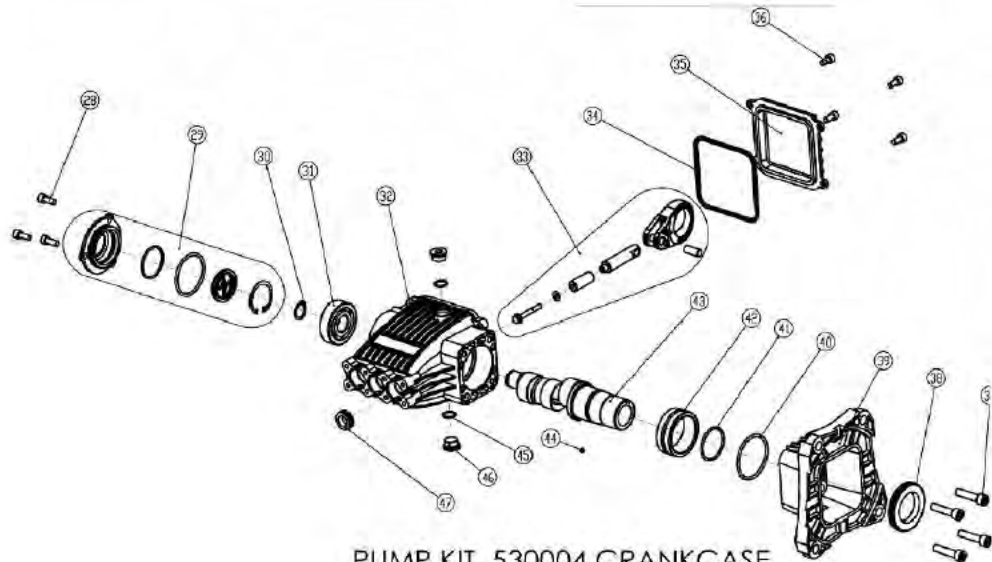
PRESSURE ADJUST VALVE KIT		
ITEM	QTY	DESCRIPTION
1	1	VALVE CAP
2	1	VALVE SPRING
3	1	VALVE
4	1	VALVE BACK RING
5	1	VALVE O-RING

#530004 PUMP DRAWING PARTS

ITEM NO.	PART NO.	DESCRIPTION	QTY PER PUMP	COMMENT
1	7106691	Cage, Valve	3	Outlet Valve Kit
		Spring, Valve		
		Disk, Valve		
		O-Ring		
		Seat, Valve		
2	7106692	Screw	8	
3	7106693	Plug	3	
4	7106694	O-Ring	3	
5	7104228	Fitting, Soap Injection	1	Soap Injector Kit
		O-Ring		
		Ball, Soap Valve		
		O-Ring		
		Spring, Soap Valve		
6	7101359	Valve, Thermal Relief	1	
7	7106695	Screw	1	
8	7106696	O-Ring, Check Valve	1	
9	7106697	Core, Check Valve	1	
10	7106698	Spring, Check Valve	1	
11	7106699	O-Ring	1	
12	7106700	O-Ring	2	
13	7106701	Quick Connect Connector, Outlet	1	
14	7106702	O-Ring	1	
15	7105705	Nut, Hand Tight	1	
16	700123	Screen, Water Inlet	1	
17	7106703	Inlet Connector	1	
18	7106704	O-Ring	1	
19	7105724	Ball	1	
20	7106705	O-Ring	2	
21	7106706	Unloader Valve Base	1	
22	7106647	Plug	3	
23	7106700	O-Ring	3	
24	7106708	O-Ring	3	Inlet Valve Kit
		Seat, Valve		
		Disk, Valve		
		Spring, Valve		
		Cage, Valve		
25	7106647	Plug	1	
26	7106710	Retainer	3	
27	7106711	Nut, Unloader Jam	1	Unloader Kit
		Nut, Unloader Adjustment		
		Spring, Unloader		
		Core, Unloader Valve		
		O-Ring		
		Back-Up Ring, Split		
		O-Ring		
		Pole, Unloader Valve		
		O-Ring		
		Back-Up Ring, Split		
		Spring, Pin		
Pin				

#530004 PUMP DRAWING PARTS

ITEM NO.	PART NO.	DESCRIPTION	QTY PER PUMP	COMMENT
28	7106721	Screw	3	
29	7106709	Cover, Side	1	Crankcase Side Cover Kit
		O-Ring		
		O-Ring		
		Sight Glass		
30	7106714	Ring ø40, Retaining	1	
31	7106715	Bearing	1	
32	7106716	Crankcase	1	
33	7106718	Bolt	3	Connecting Rod Kit
		Gasket		
		Plunger, Ceramic		
		Plunger, Pole Base		
		Connecting Rod		
		Pin, Connecting Rod		
34	7106719	O-Ring	1	
35	7106720	End Cover	1	
36	7106721	Screw	4	
37	7106722	Screw	4	
38	7106723	Oil Seal	1	
39	7106724	Flange	1	
40	7106725	O-Ring	1	
41	7106726	Ring ø40, Retaining	1	
42	7106727	Needle Bearing	1	
43	7106728	Crankshaft, 9.4	1	
44	7106729	Screw	1	
45	7106730	O-Ring	2	
46	7105721	Plug	2	
47	7106731	Oil Seal	3	
48	7106732	Retainer, Seal	3	
49	7106733	Seal, Low Pressure	3	High and Low Pressure Seal Kit
		O-Ring		
		Ring, Anti-Ext		
		Seal High Pressure		
50	7106734	Pump Head	1	
51	7106628	Valve Cap, Pressure Boost	1	Pressure Boost Valve Kit
		Spring, Boost Valve		
		Valve, Pressure Boost		
		Back Ring		
		O-Ring		



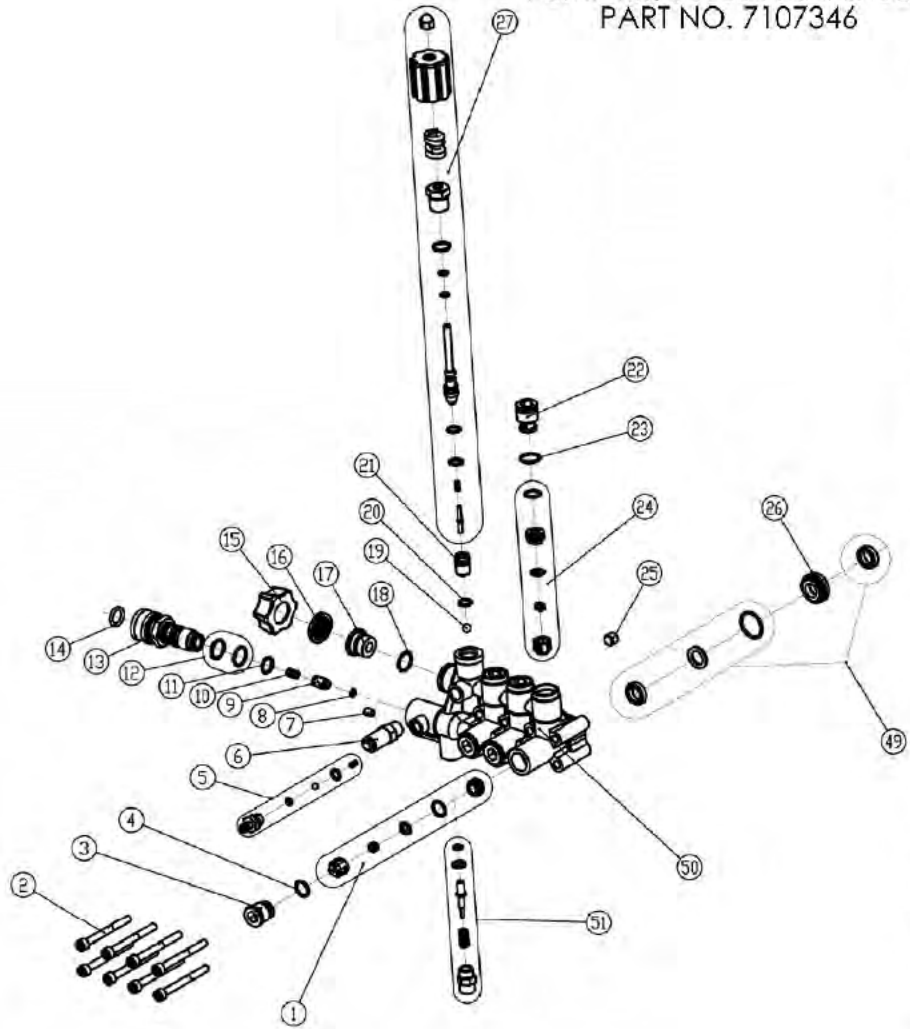
PUMP KIT, 530004 CRANKCASE  
PART NO. 7107347

#530004 PUMP DRAWING PARTS

ITEM NO.	PART NO.	DESCRIPTION	QTY PER PUMP	COMMENT
28	7106721	Screw	3	
29	7106709	Cover, Side	1	Crankcase Side Cover Kit
		O-Ring		
		O-Ring		
		Sight Glass		
30	7106714	Ring e20, Retaining	1	
31	7106716	Bearing	1	
32	7106716	Crankcase	1	
33	7106718	Roll	3	Connecting Rod Kit
		Gasket		
		Plunger, Ceramic		
		Plunger, Pole Base		
		Connecting Rod		
		Pin, Connecting Rod		
34	7106719	O-Ring	1	
35	7106720	End Cover	1	
36	7106721	Screw	4	
37	7106722	Screw	4	
38	7106723	Oil Seal	1	
39	7106724	Flange	1	
40	7106725	O-Ring	1	
41	7106726	Ring e40, Retaining	1	
42	7106727	Needle Bearing	1	
43	7106728	Crankshaft, 9.4	1	
44	7106729	Screw	1	
45	7106730	O-Ring	2	
46	7106721	Plug	2	
47	7106731	Oil Seal	3	

PUMP KIT, 530004 MANIFOLD  
PART NO. 7107346

#530004 PUMP DRAWING PARTS



ITEM NO.	PART NO.	DESCRIPTION	QTY PER PUMP	COMMENT
1	7106691	Cargo Valve	3	Outlet Valve Kit
		Spring Valve		
		Disk Valve		
		O-Ring		
		Seal Valve		
2	7106692	Screw	8	
3	7106693	Plug	3	
4	7106694	O-Ring	3	
5	7104228	Fitting Soap Injection	1	Soap Injector Kit
		O-Ring		
		Ball Soap Valve		
		O-Ring		
		Spring Soap Valve		
6	7101359	Valve Thermal Relief	1	
7	7106695	Screw	1	
8	7106706	O-Ring Check Valve	1	
9	7106607	Core Check Valve	1	
10	7106698	Spring Check Valve	1	
11	7106800	O-Ring	1	
12	7106700	O-Ring	2	
13	7106701	Quick Connect Connector Outlet	1	
14	7106702	O-Ring	1	
15	7107705	Nut Hand Tight	1	
16	700123	Screen Water Inlet	1	
17	7106703	Ball Connector	1	
18	7106704	O-Ring	1	
19	7106724	Ball	1	
20	7106705	O-Ring	2	
21	7106706	O-Ring	1	
22	7106647	Plug	3	
23	7106700	O-Ring	3	
24	7106708	O-Ring	3	Inlet Valve Kit
		Seal Valve		
		Disk Valve		
		Spring Valve		
		Cargo Valve		
25	7106647	Plug	1	
26	7106710	Retainer	3	
27	7106711	Nut Unloader Jam	1	Unloader Kit
		Nut Unloader Adjustment		
		Spring Unloader		
		Core Unloader Valve		
		O-Ring		
		Back-Up Ring Split		
		O-Ring		
		Pole Unloader Valve		
		O-Ring		
		Back-Up Ring Split		
Spring Pin				
48	7106732	Retainer Seal	3	
49	7106733	Seal Low Pressure	3	High and Low Pressure Seal Kit
		O-Ring		
		Ring Anti Exit		
50	7106734	Seal High Pressure	1	
51	7106628	Pump Head	1	Pressure Boost Valve Kit
		Valve Cap Pressure Boost		
		Spring Boost Valve		
		Valve Pressure Boost		
		Back Ring		
		O-Ring		