

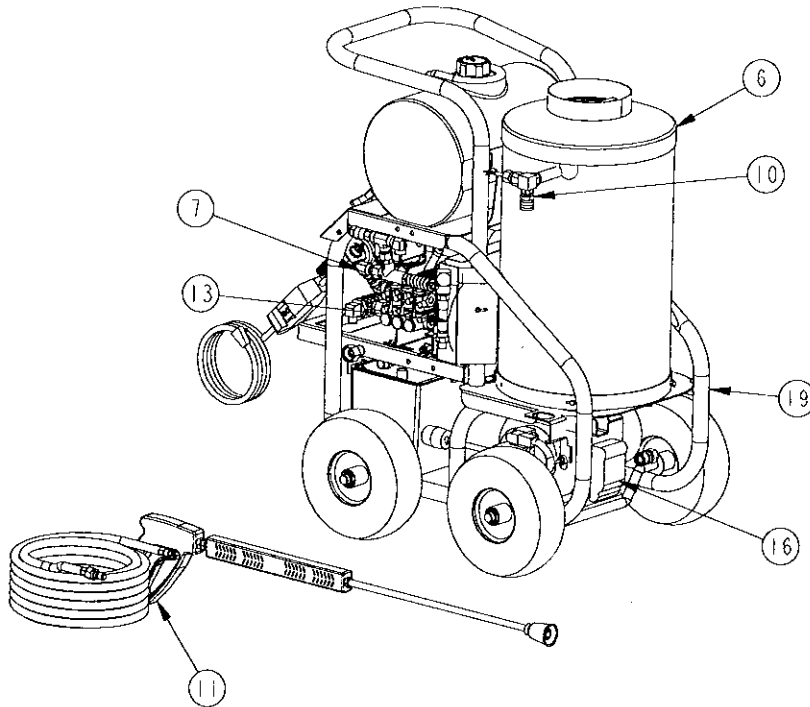
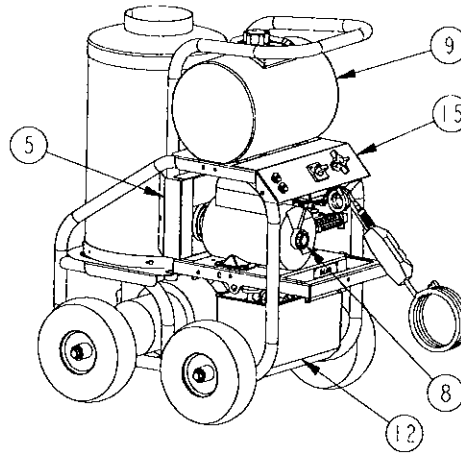
BILL OF MATERIALS

ITEM	QTY	PART DESCRIPTION	PART \ DRW#
1	4	POP RIVET	02-522200
2	1	WASH JET	06-415030-1
3	1	WASH JET	06-425030-1
4	1	SPECIFICATIONS TAG	26-101003
5	1	JUNIOR BELT GUARD	B01-2022-1
6	1	HEAT CHAMBER ASS'Y	B01-6224
7	1	PUMP ASSEMBLY	C01-2015A
8	1	DRIVE ASSEMBLY	D01-2009
9	1	FUEL TANK ASS'Y	E01-4001-1
10	1	COIL OUTLET ASS'Y	E01-4007

BILL OF MATERIALS

ITEM	QTY	PART DESCRIPTION	PART \ DRW#
11	1	GUN & PRESSURE HOSE ASS'Y	E01-6001-1
12	1	FLOAT TANK ASSY	E01-6202
13	1	COIL INLET ASS'Y	E01-6203
14	1	WIRING DIAGRAM	F01-6200
15	1	PANEL ASS'Y	F01-6203
16	1	BURNER ASSEMBLY	G01-6200
17	1	DECAL ASS'Y	I01-6200-1
18	1	PACKAGING ASSEMBLY	J01-4000
19	1	MACHINE SUB-ASSEMBLY	X01-6200-2

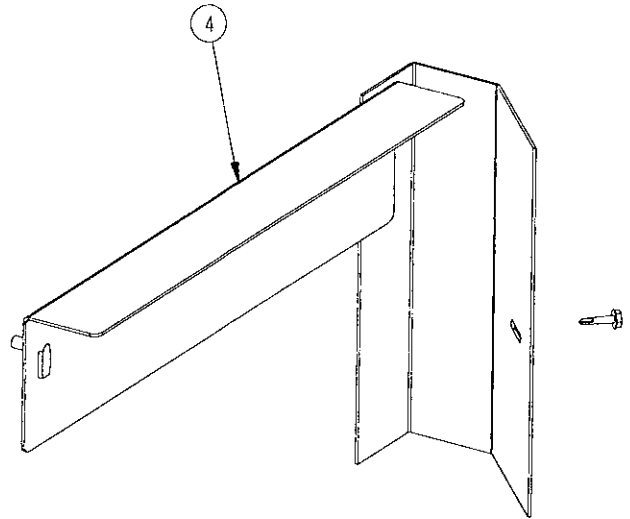
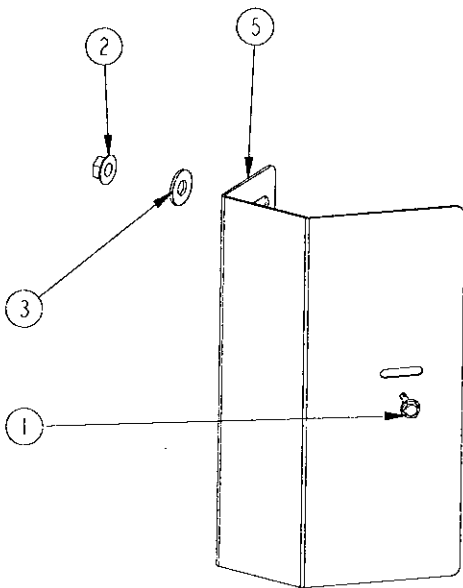
NOTE: SOME ITEMS NOT SHOWN FOR CLARITY



TITLE	12-216 ES OIL 4-WHL	
DESCRIPTION	120V 1PH 2.3HP / AR	
DATE	03-Jun-09	DWG# A01-4020-1

BILL OF MATERIALS

ITEM	QTY	PART DESCRIPTION	PART \ DRW#
1	2	SCREW	02-101400
2	1	NUT	02-301100
3	1	WASHER	02-501100
4	1	BELT GUARD WELDMENT	B01-2023-1
5	1	BELT GUARD - PUMP END	B01-2024-1

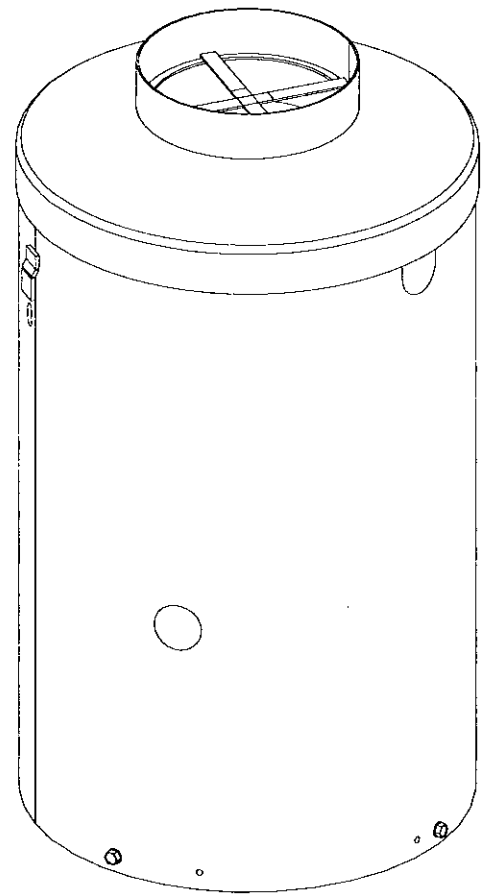
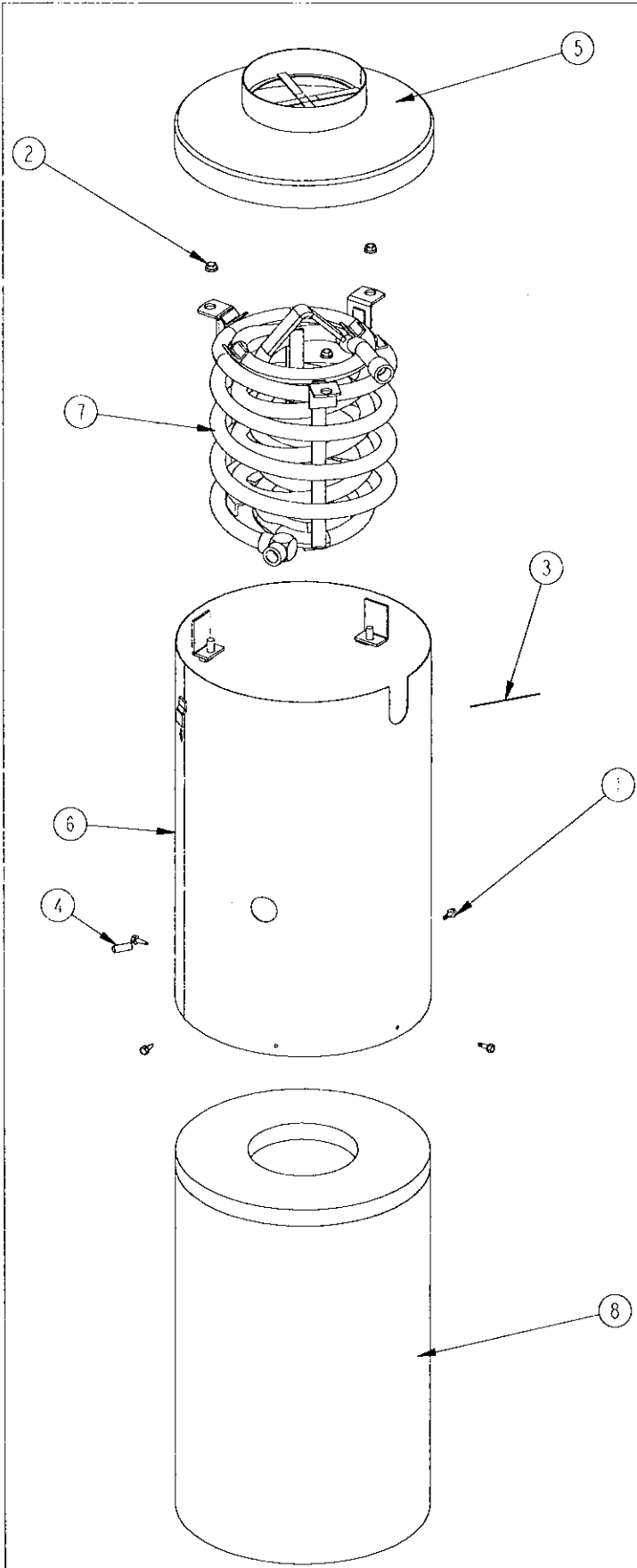


TITLE	BELT GUARD ASSY	
DESCRIPTION	JUNIOR - PAINTED	
DATE	26-May-05	DWG# B01-2022-1

BILL OF MATERIALS

ITEM	QTY	PART DESCRIPTION	PART \ DRW#
1	4	SCREW	02-101600
2	3	NUT	02-301300
3	1	VINYL EDGING	1903-4
4	1	1/2" FIBERFAX ROPE INSULATION	2005-4
5	1	STACK HEAD WELDMENT	B01-1006
6	1	WRAPPER WELDMENT	B01-2067
7	1	COIL WELDMENT	B01-6223
8	1	INSULATION PACKAGE	H01-2003

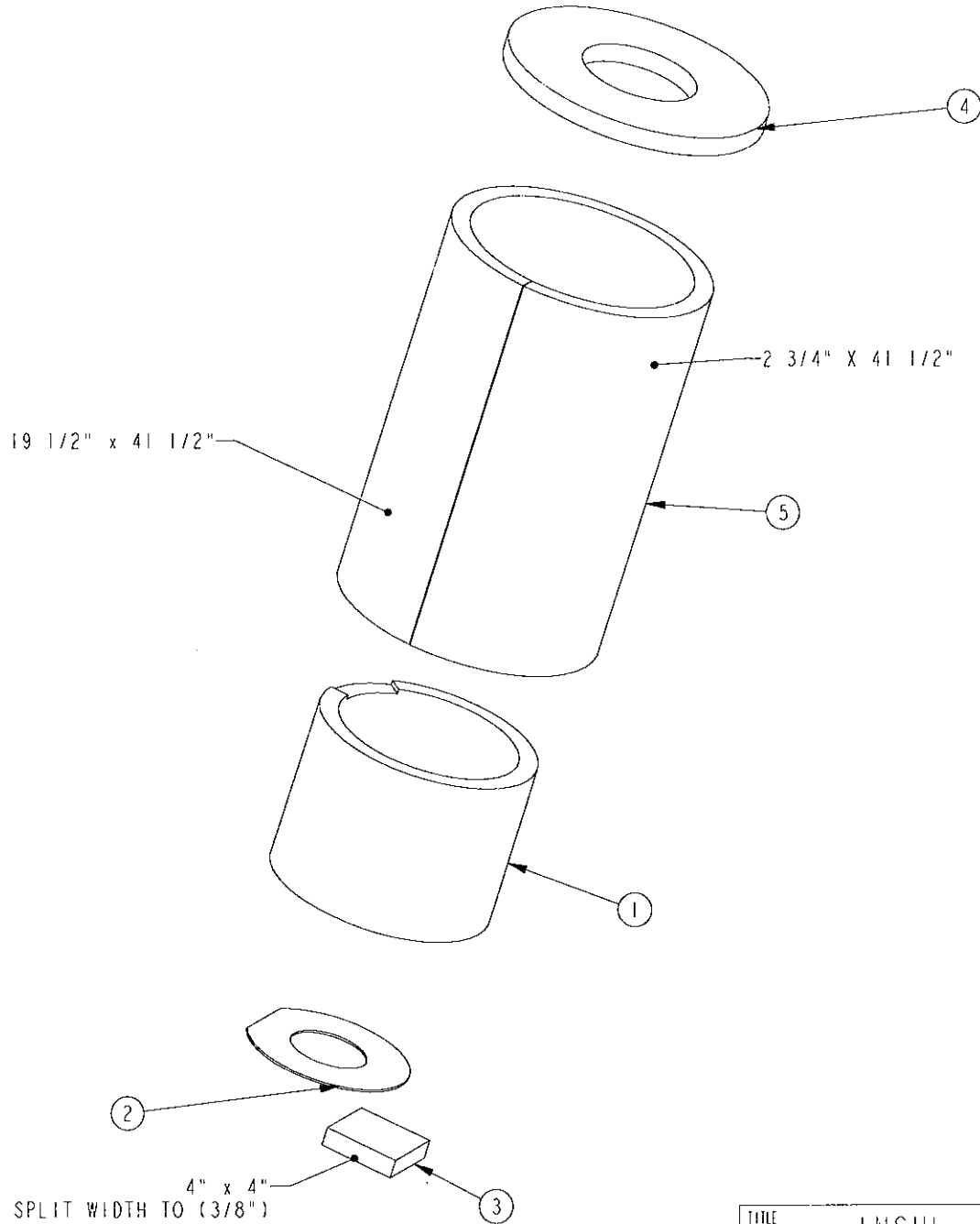
NOTE: WRAP COIL INLET HOLE WITH 4" OF 1/2" FIBERFAX ROPE INSULATION. PUT 4" OF VINYL ON COIL OUTLET HOLE.



TITLE	ECONOMY JR SIDE OUTLET CRS		
DESCRIPTION	HEAT CHAMBER ASS'Y		
DATE	03-Mar-09	DWG#	B01-6224

BILL OF MATERIALS

ITEM	QTY	PART DESCRIPTION	PART \ DRW#
1	1	INSULATION BUCKET	2019
2	1	BURNER GASKET	10-11236-1
3	1	INSULATION	2001-4-4
4	1	STACK HEAD RING 14/6	H01-1002
5	1	BLANKET	H01-1005



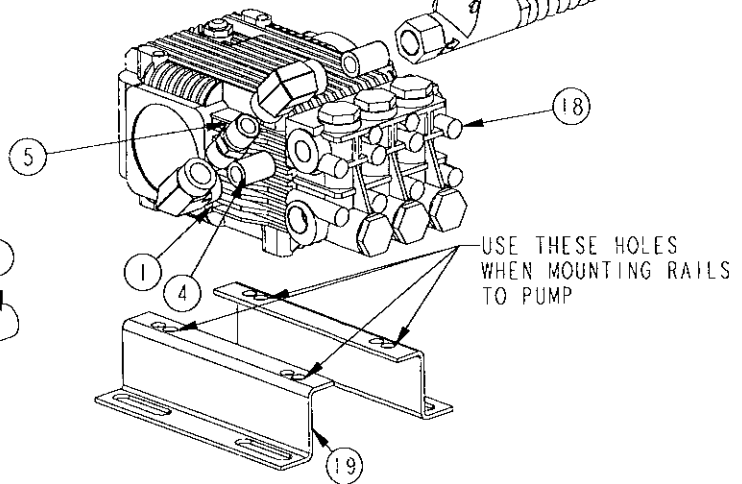
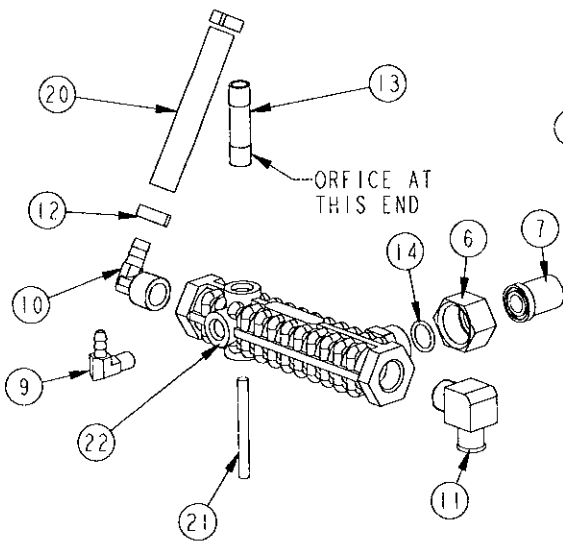
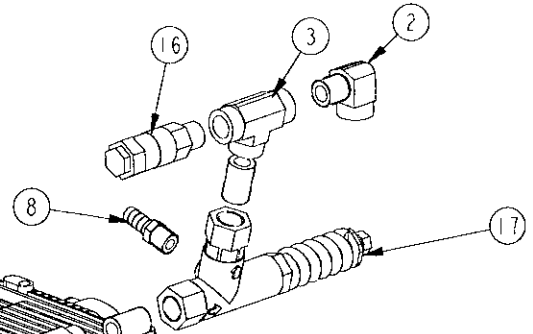
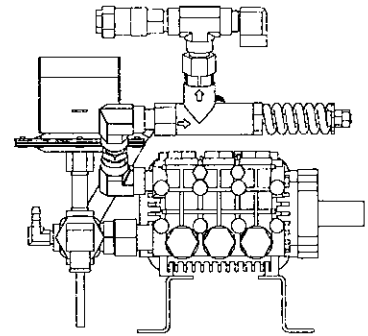
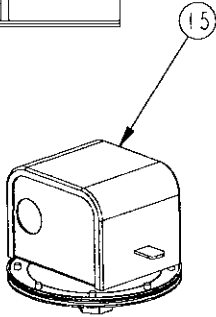
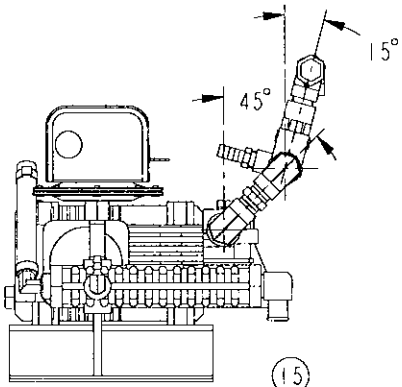
TITLE	INSUL. PACKAGE	
DESCRIPTION	INSULATION ASSY	
DATE	3/3/09	DWG# H01-2003

BILL OF MATERIALS

ITEM	QTY	PART DESCRIPTION	PART \ DRW#
1	2	ELBOW	01-111204
2	1	ELBOW	01-131204
3	1	TEE	01-161204
4	3	NIPPLE	01-271004
5	1	NIPPLE	01-271104
6	1	NUT	01-401000
7	1	HOSE ADAPTOR	01-401027
8	1	HOSE BARB	01-411101
9	1	HOSE BARB	01-411102
10	1	HOSE BARB	01-411601
11	1	HOSE BARB	01-411602

BILL OF MATERIALS

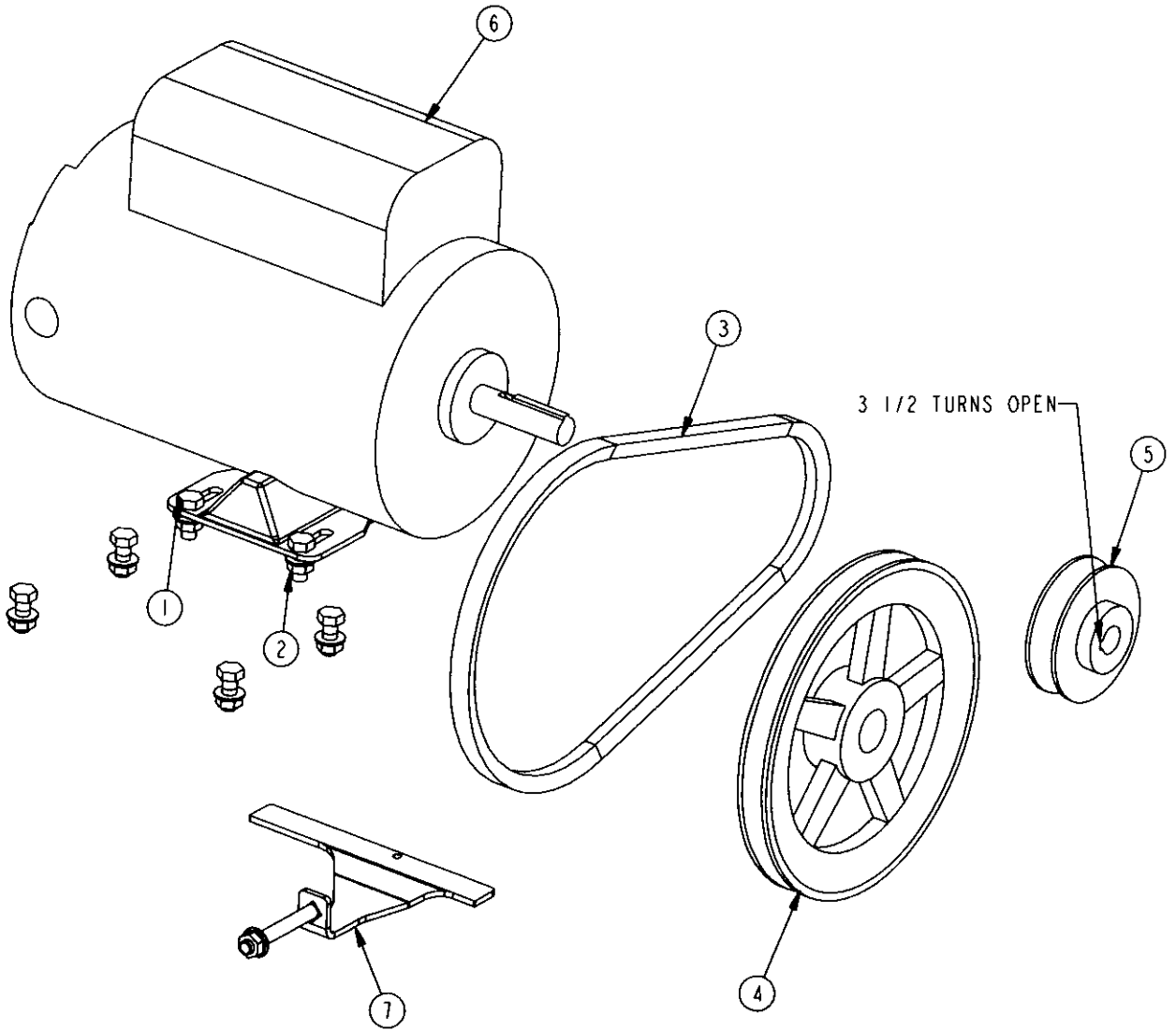
ITEM	QTY	PART DESCRIPTION	PART \ DRW#
12	2	CLAMP	01-451006
13	1	NIPPLE ORIFICE	01-261205-1
14	1	O-RING	02-991100
15	1	VAC SWITCH	04-101320
16	1	RELIEF VALVE	05-111311
17	1	UNLOADER	05-185400
18	1	PUMP	08-174100
19	1	RAILS	08-173901
20	1	HOSE: 3/8" MULTI PURPOSE	2204-12
21	1	ROD	2304-2P5
22	1	MANIFOLD - 13/64" ORF.	29-144000-B



TITLE	PUMP ASSEMBLY	
DESCRIPTION	(12-216 EL) (2512)	
DATE	21-Apr-09	DWG# C01-2015A

BILL OF MATERIALS

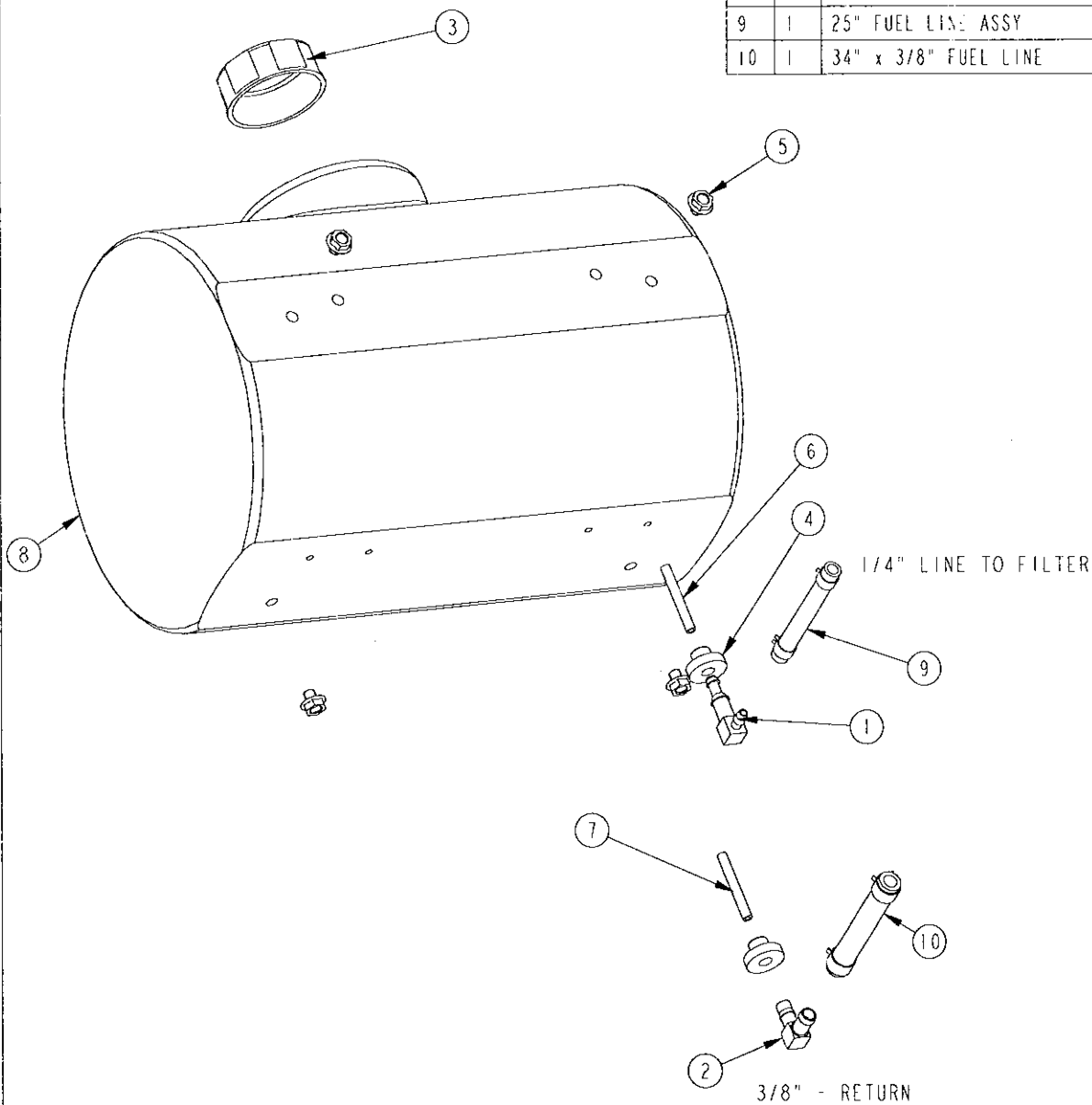
ITEM	QTY	PART DESCRIPTION	PART \ DRW#
1	8	BOLT	02-121100
2	8	NUT	02-301200
3	1	BELT	07-122900
4	1	PULLEY	07-227900
5	1	PULLEY	07-253400
6	1	MOTOR	09-111701-2
7	1	BELT TIGHTENER ASS'Y	E01-0365



TITLE	DRIVE ASSEMBLY	
DESCRIPTION		
DATE	17-Aug-05	DWG# D01-2009

BILL OF MATERIALS

ITEM	QTY	PART DESCRIPTION	PART & DRW#
1	1	BARB	01-411113
2	1	FITTING - 90°	01-411118
3	1	CAP	01-431203
4	2	GROMMET	01-411112-1
5	4	BOLT	02-121001
6	1	TUBING	1051-2
7	1	TUBING	1051-6
8	1	FUEL TANK	29-131125
9	1	25" FUEL LINE ASSY	E01-0335-25
10	1	34" x 3/8" FUEL LINE	E01-0363-34

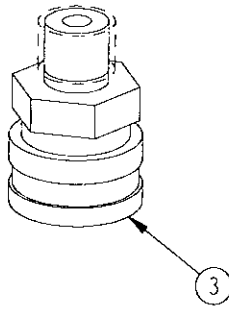
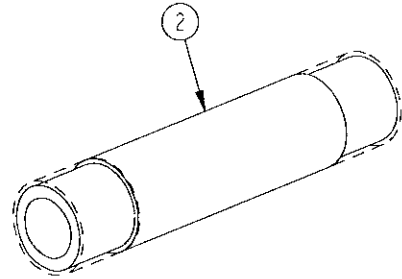
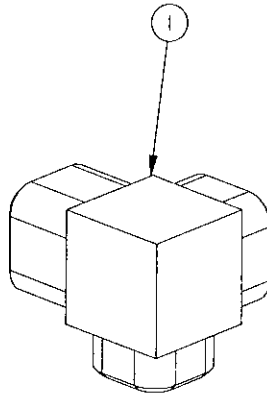
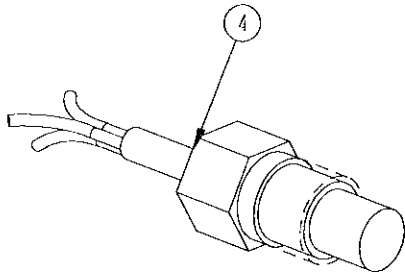


TITLE	FUEL TANK ASS'Y
DESCRIPTION	JR - 12-000
DATE	17-Sep-04
DWG#	E01-4001-1

B 8/3/05 BK CHANGED VIEW OF TANK; ITEM #4 WAS ADDED; ITEM #9 & #10 WAS CHG'D
 A 5/18/05 BK TANK WAS 29-131105

BILL OF MATERIALS

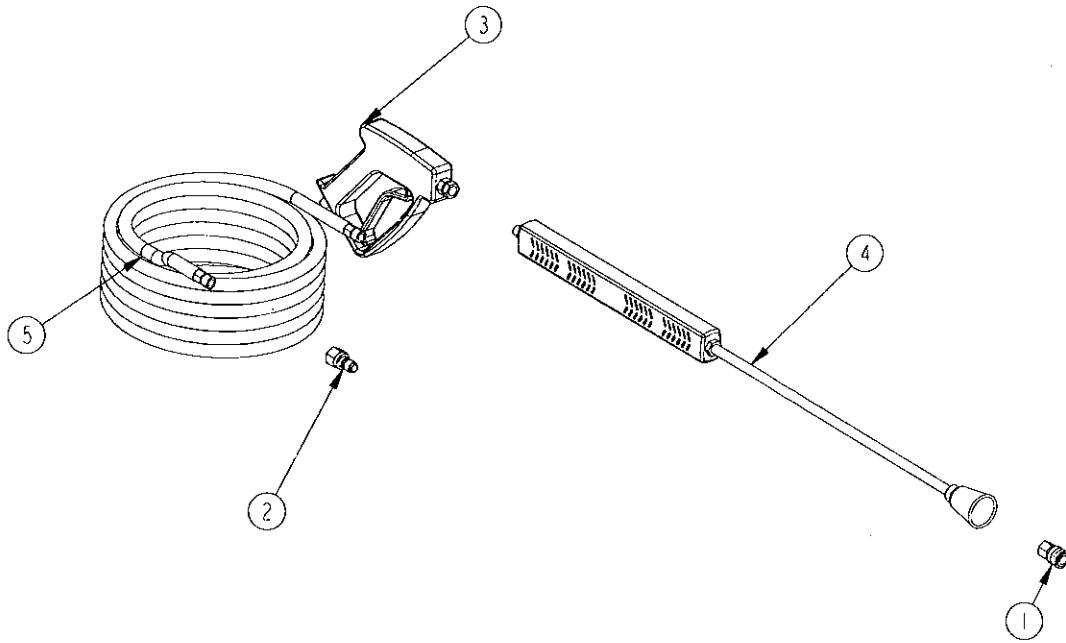
ITEM	QTY	PART DESCRIPTION	PART \ DRW#
1	1	ELBOW, SO	01-151304
2	1	NIPPLE	01-281604
3	1	COUPLER	01-421200
4	1	SENSOR	04-101003



TITLE	COIL OUTLET ASS'Y		
DESCRIPTION	12-000 ES		
DATE	03-Aug-05	DWG#	E01-4007

BILL OF MATERIALS

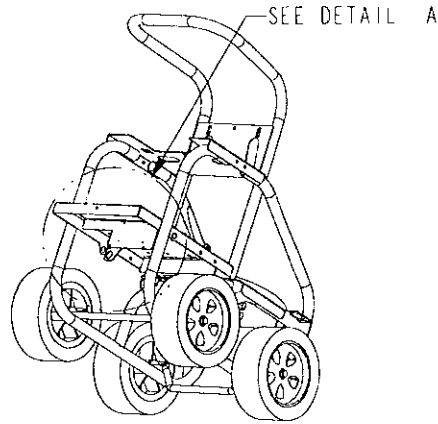
ITEM	QTY	PART DESCRIPTION	PART \ DRW#
1	1	QUICK COUPLER	01-421000
2	1	QUICK COUPLER	01-421300
3	1	TRIGGER	06-152500
4	1	LANCE	06-201300
5	1	HOSE	11-114015



TITLE	GUN & PRESSURE HOSE ASS'Y	
DESCRIPTION	JR & SR	
DATE	03-Aug-05	DWG# E01-6001-1

BILL OF MATERIALS

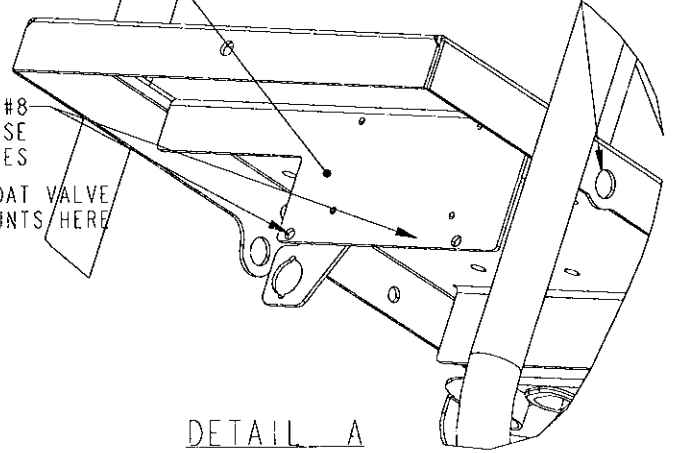
ITEM	QTY	PART DESCRIPTION	PART & DRW#
1	1	ELBOW	01-111300
2	1	NUT	01-401000
3	1	HOSE ADAPTOR	01-401011
4	1	WASHER	01-401020
5	1	HOSE BARB	01-411401
6	1	HOSE BARB	01-411606
7	3	CLAMP	01-451202
8	2	CAPSCREW	02-111100
9	2	NUT	02-301100
10	1	3/8" NPT LOCK NUT	02-301334
11	1	SCREEN	05-121500
12	1	FLOAT VALVE	05-171400
13	1	HOSE	2207-15
14	1	HOSE	2207-10P5
15	1	FLOAT TANK	29-131500



ITEM #5 THRU THIS HOLE, & ITEM #10 ON OUTSIDE OF FLANGE TO SECURE IT TO FRAME.

FLOAT TANK SUPPORT FLANGE

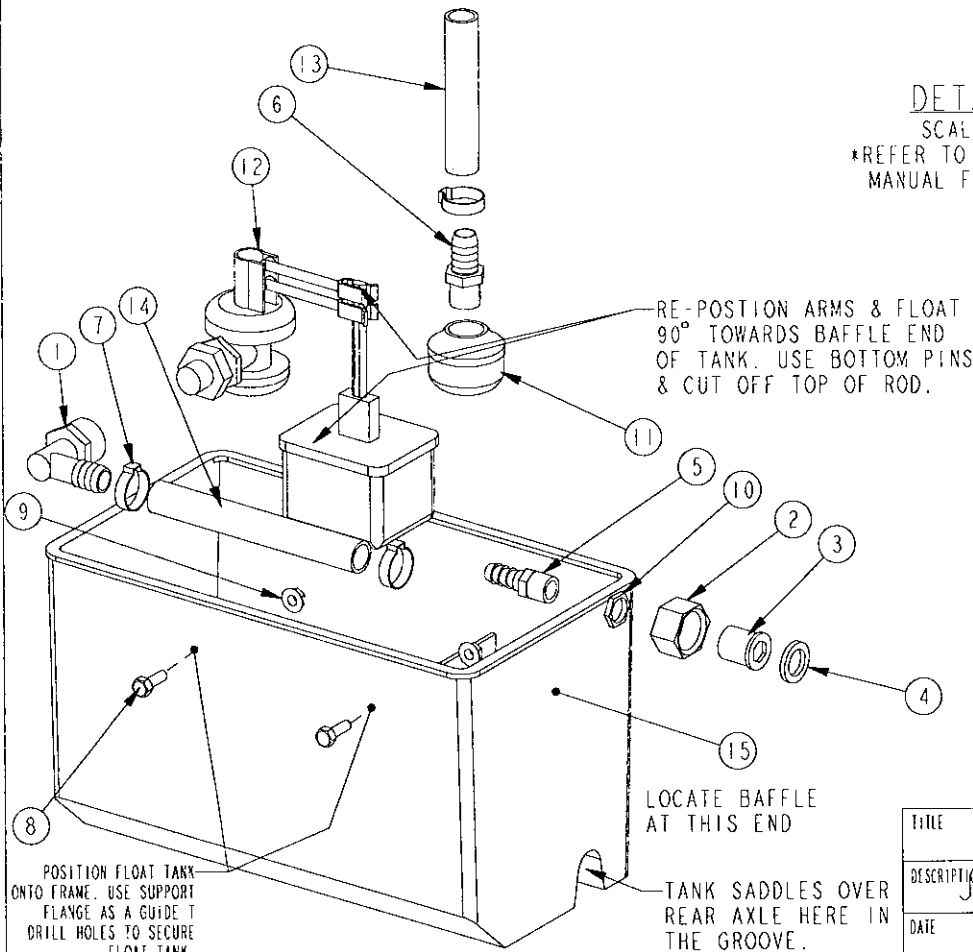
ITEM #8 THRU THESE HOLES
FLOAT VALVE MOUNTS HERE



DETAIL A

SCALE 0.260

REFER TO FIRST PAGE OF MANUAL FOR CLARITY

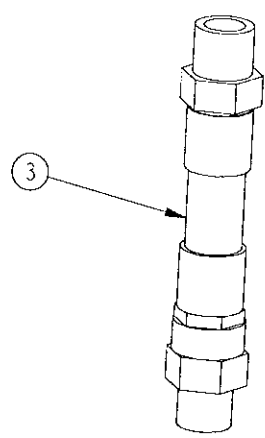
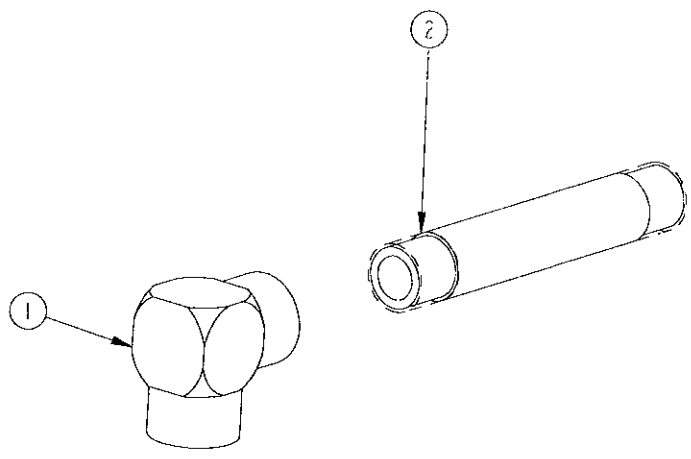


POSITION FLOAT TANK ONTO FRAME. USE SUPPORT FLANGE AS A GUIDE TO DRILL HOLES TO SECURE FLOAT TANK.

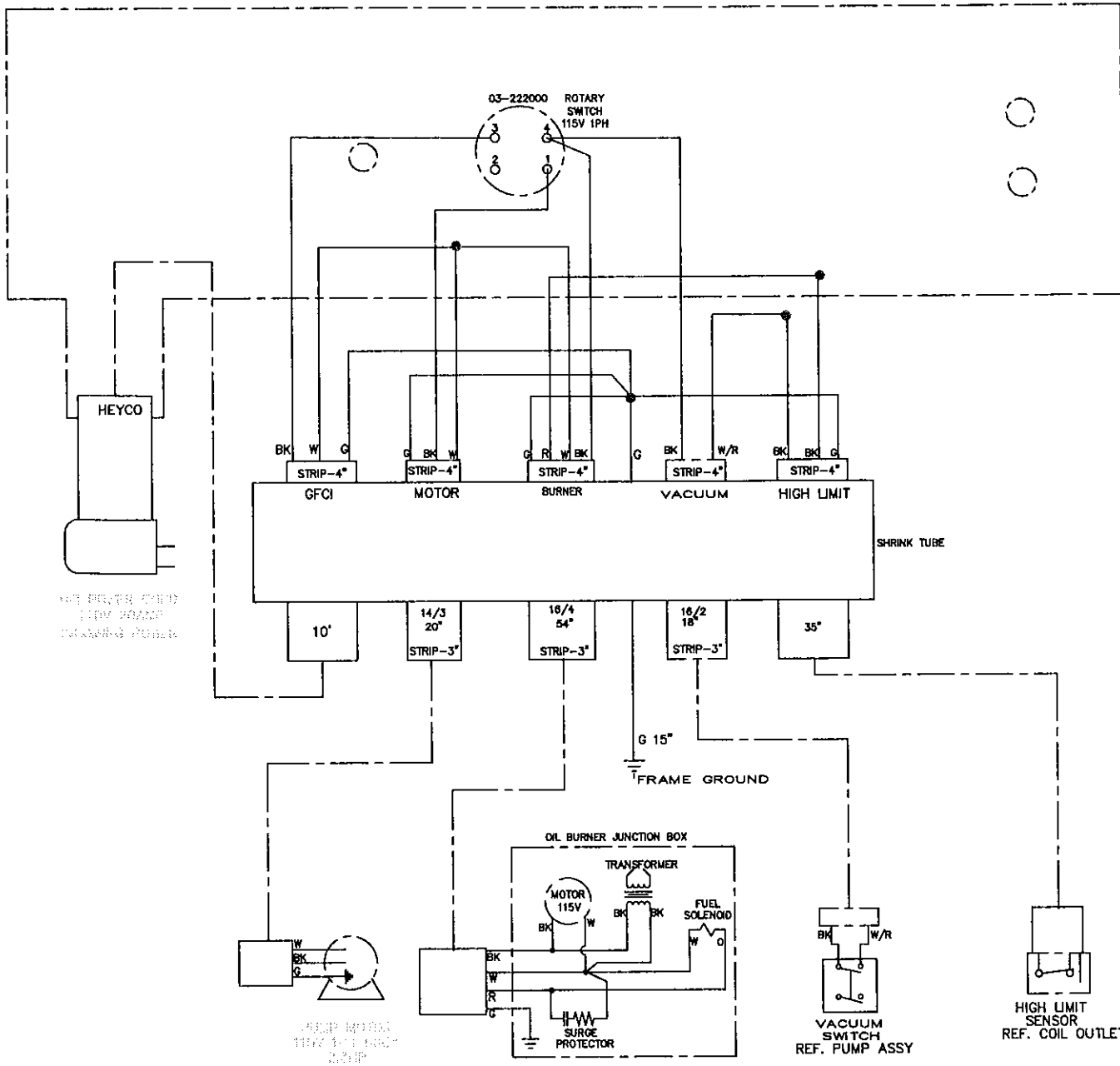
TITLE	FLOAT TANK ASSY	
DESCRIPTION	JR 4 WHEEL (NEW DESIGN)	
DATE		DWG# E01-6202

BILL OF MATERIALS

ITEM	QTY	PART DESCRIPTION	PART \ DRW#
1	1	ELBOW	01-111304
2	1	NIPPLE	01-281804
3	1	HOSE	11-112021



TITLE	COIL INLET ASS'Y - SIDE OUTLET COIL	
DESCRIPTION	JR 4 WHEEL (UPDATED DESIGN)	
DATE	05-Mar-09	DWG# E01-6203



120V 1PH 2.3HP
 120V 1PH 2.3HP
 120V 1PH 2.3HP

120V 1PH 2.3HP
 120V 1PH 2.3HP

SOAP LINE 7'
 SOAP LINE 10'

WIRE COLOR CODES:

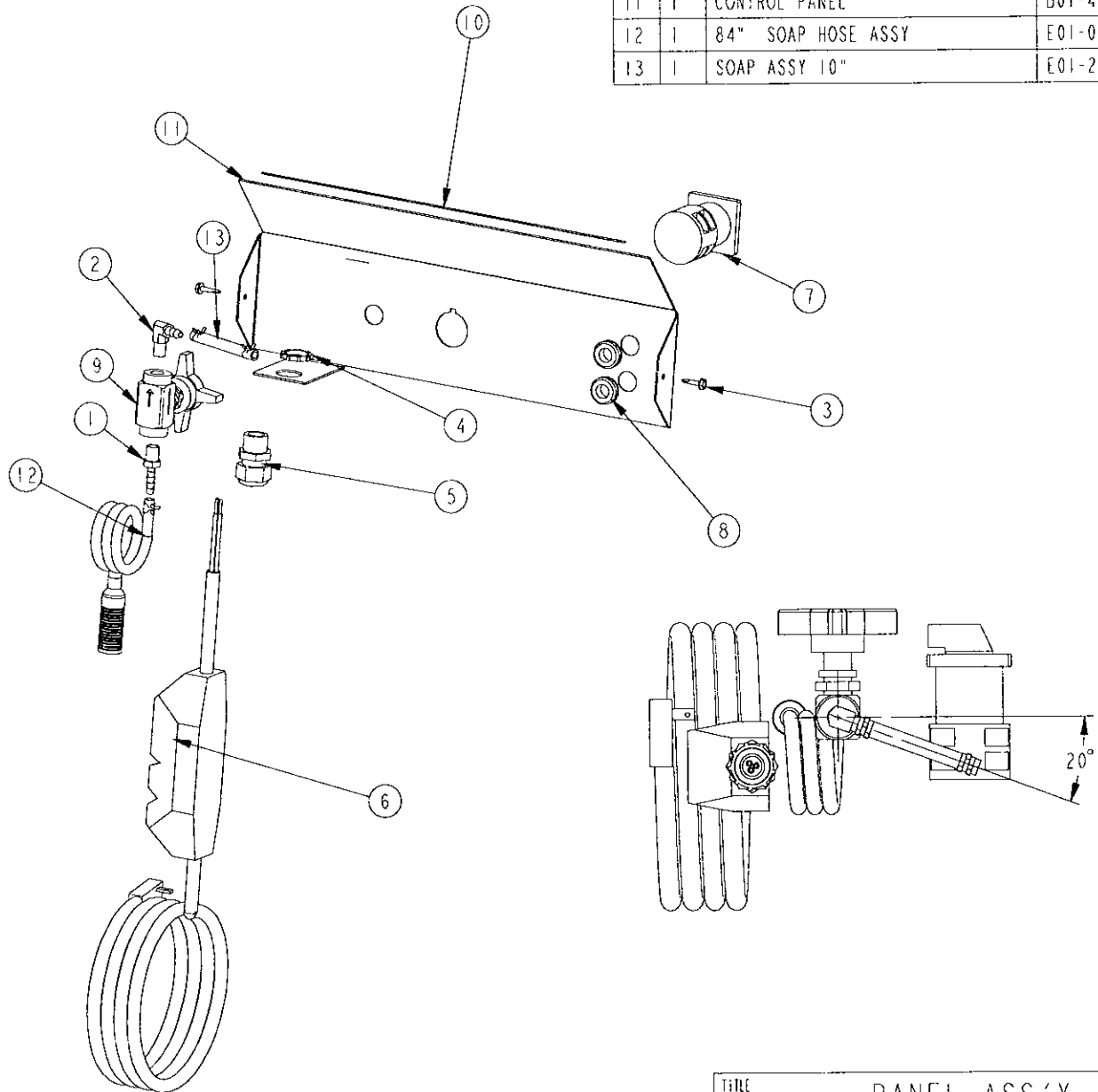
- BK= BLACK
- G= GREEN
- W= WHITE
- BL= BLUE
- R= RED
- O= ORANGE
- Y= YELLOW
- BR= BROWN
- V= VIOLET
- BK/BL= BLACK WIRE WITH BLUE TAPE.
- W/R= WHITE WIRE WITH RED TAPE.
- G/R= GREEN WIRE WITH RED TAPE.

12-216 ES 120V 1PH 2.3HP
 12-310 ES 120V 1PH 2.3HP

TITLE		WIRING DIAGRAM	
DESCRIPTION		12-216 ES 120V 1PH 2.3HP	
		DWG#	F01-6200

BILL OF MATERIALS

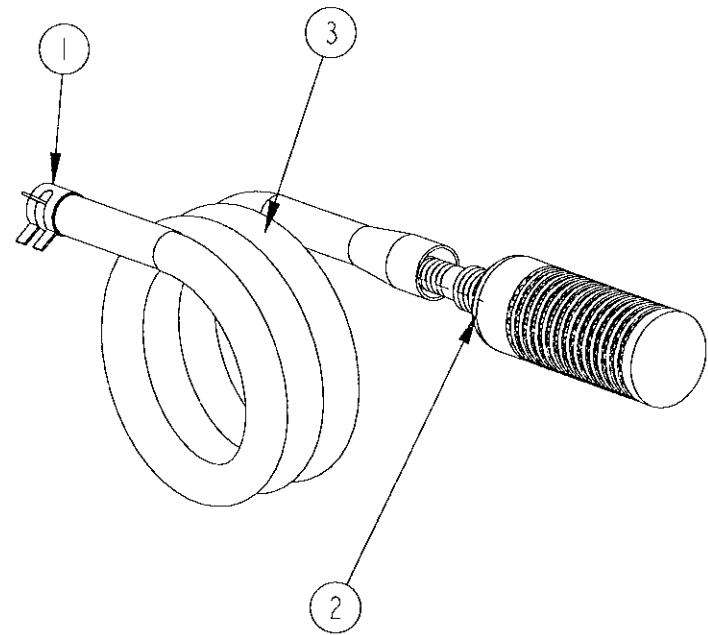
ITEM	QTY	PART DESCRIPTION	PART & DRW#
1	1	HOSE BARB	01-411100
2	1	HOSE BARB	01-411102
3	2	SCREW	02-101400
4	1	NUT	03-191005
5	1	HEYCO CONN.	03-192520
6	1	GFCI	03-211720
7	1	SWITCH	03-222000
8	2	FLIP GROMMET	03-241000
9	1	METERING VALVE	05-221000
10	1	VINYL EDGING	1903-13P75
11	1	CONTROL PANEL	B01-4002
12	1	84" SOAP HOSE ASSY	E01-0020
13	1	SOAP ASSY 10"	E01-2005



TITLE	PANEL ASS'Y	
DESCRIPTION	12.216 ES	
DATE	03-Aug-05	DWG# F01-6203

BILL OF MATERIALS

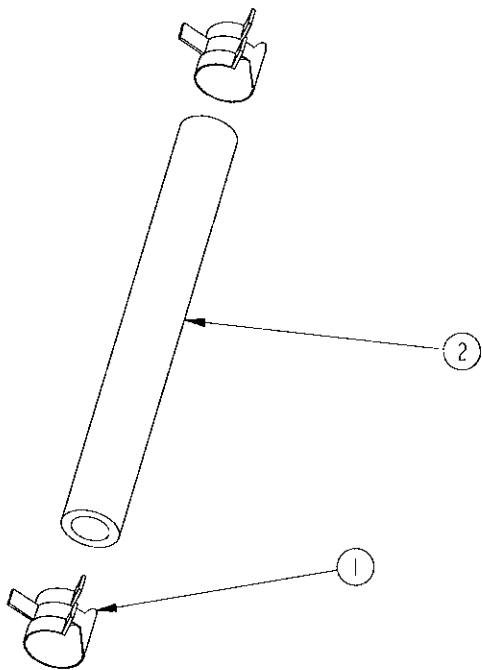
ITEM	QTY	PART DESCRIPTION	PART \ DRW#
1	1	CLAMP	01-451011
2	1	CHECK VALVE	05-121000
3	1	HOSE	2211-84



TITLE	HOSE ASSY	
DESCRIPTION		
DATE	DWG#	E01-0020

BILL OF MATERIALS

ITEM	QTY	PART DESCRIPTION	PART \ DRW#
1	2	CLAMP	01-451011
2	1	HOSE: 1/4" POLY BRAID	2211-10

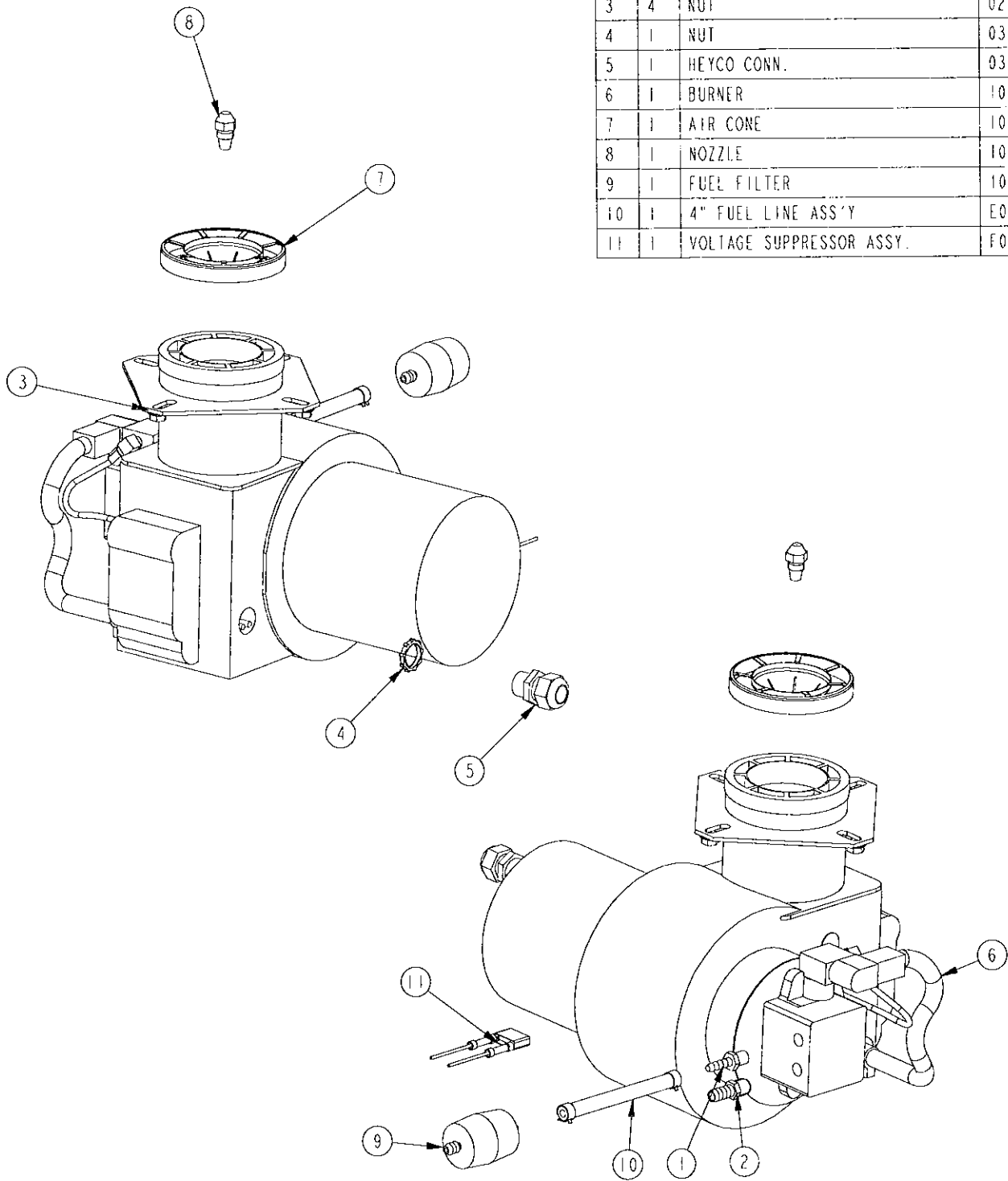


TITLE	SOAP ASSY 10"
DESCRIPTION	JR / SR SERIES
DATE	DWG# E01-2005

A 06/13/06 WG 2211-10 WAS 2211-7

BILL OF MATERIALS

ITEM	QTY	PART DESCRIPTION	PART & DRW#
1	1	HOSE BARB	01-411100
2	1	HOSE BARB	01-411101
3	4	NUT	02-301300
4	1	NUT	03-191005
5	1	HEYCO CONN.	03-192520
6	1	BURNER	10-111033
7	1	AIR CONE	10-111223
8	1	NOZZLE	10-201000
9	1	FUEL FILTER	10-301150
10	1	4" FUEL LINE ASS'Y	E01-0335-4
11	1	VOLTAGE SUPPRESSOR ASSY.	E01-0500

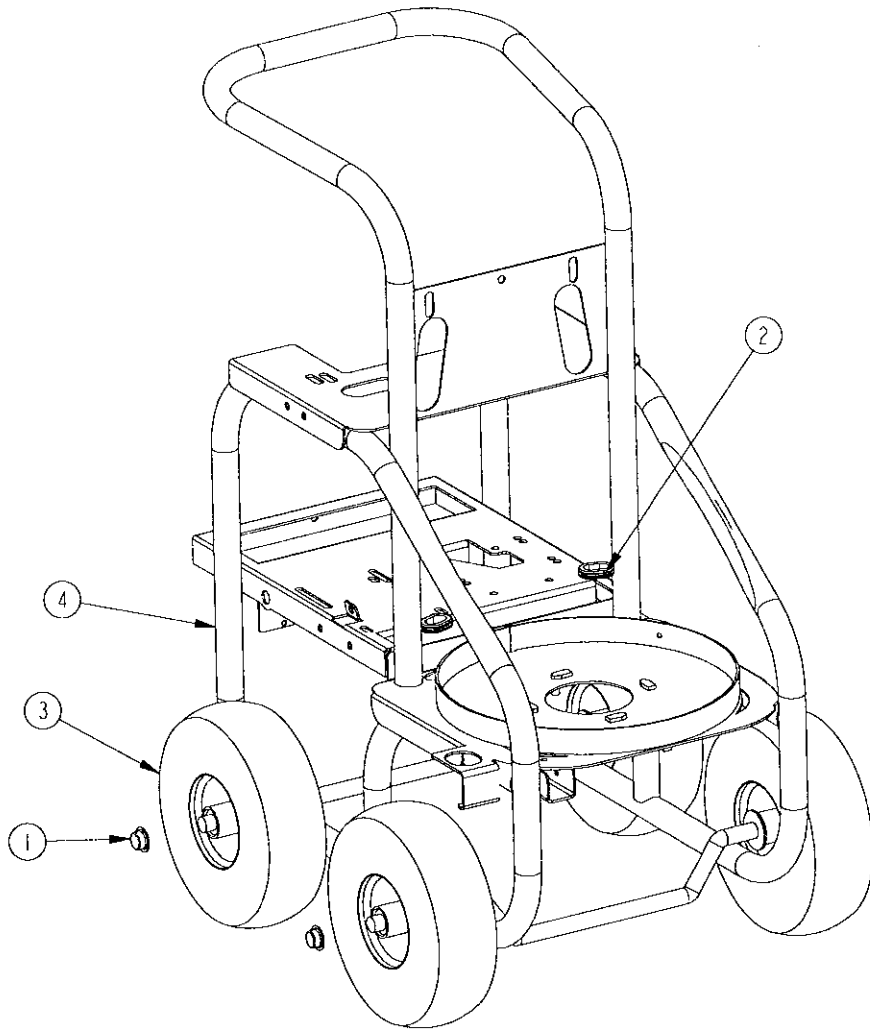


TITLE	BURNER ASSEMBLY	
DESCRIPTION	12-216 ES	
DATE	22-Aug-05	DWG# G01-6200

A 21-Aug-07 WG CHANGED BURNER PER VENDER

BILL OF MATERIALS

ITEM	QTY	PART DESCRIPTION	PART \ DRWH
1	4	PUSH CAP	02-521203
2	2	GROMMET	03-241105
3	4	WHEEL	12-151250
4	1	FRAME WELDMENT	B01-6207-3



TITLE	MACHINE SUB-ASSEMBLY	
DESCRIPTION	JR - SILVER WHEELS	
DATE	10-Mar-09	DWG# X01-6200-2