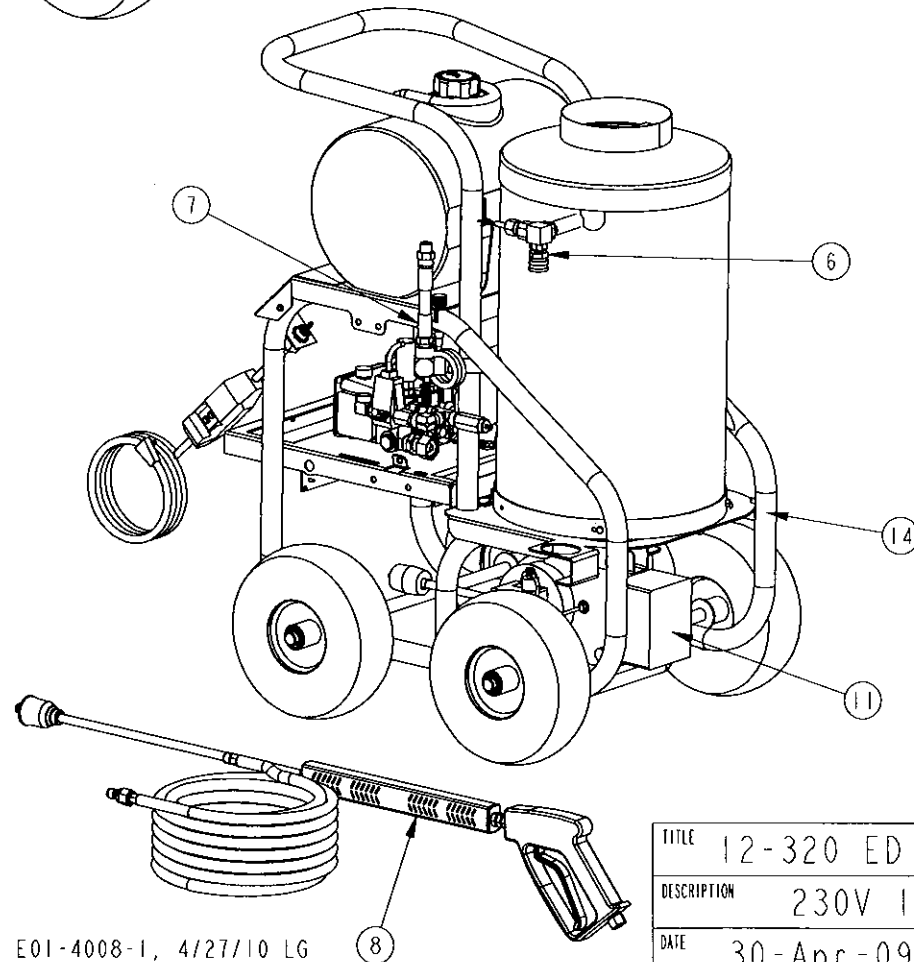
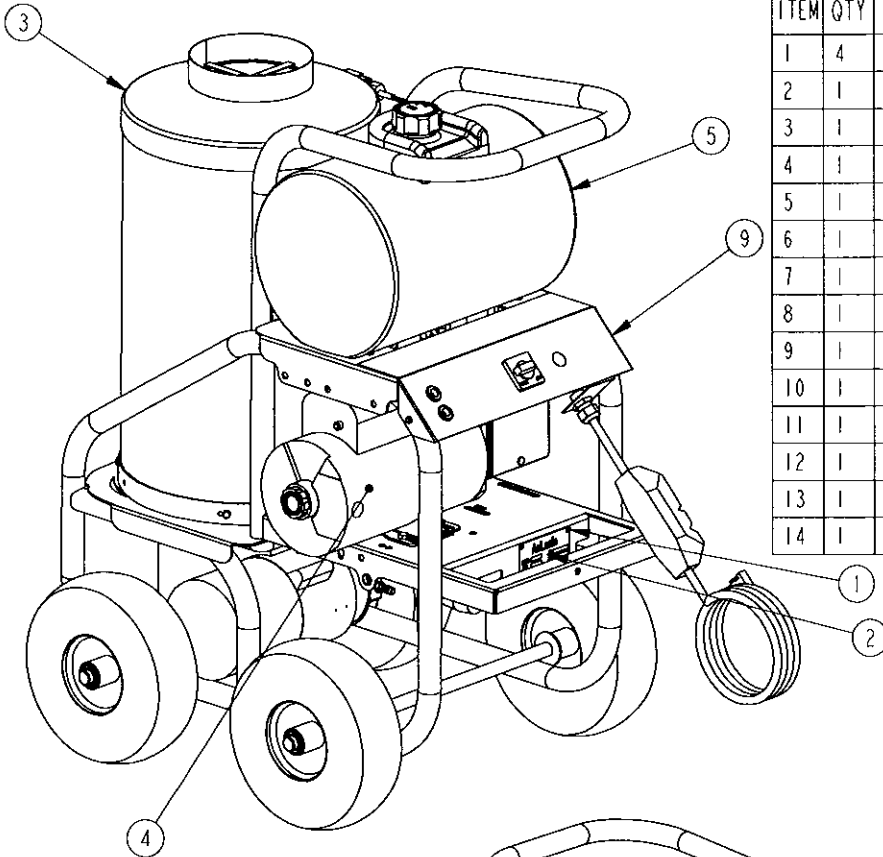


# BILL OF MATERIALS

ITEM	QTY	PART DESCRIPTION	PART \ DRWH
1	4	POP RIVET	02-52200
2	1	SPECIFICATIONS TAG	26-101003
3	1	HEAT CHAMBER ASS'Y	B01-6224
4	1	MOTOR/PUMP ASSEMBLY	C01-4007-2
5	1	FUEL TANK ASS'Y	E01-4001-1
6	1	COIL OUTLET ASS'Y	E01-4007
7	1	COIL INLET ASS'Y	E01-4008-2
8	1	GUN & HOSE ASS'Y	E01-6001-A
9	1	PANEL ASS'Y	F01-6210
10	1	WIRING DIAGRAM 12-320 ED	F01-6211
11	1	BURNER ASS'Y	G01-6203
12	1	DECAL GROUP	I01-4000-1
13	1	PACKAGING ASSEMBLY	J01-4000
14	1	MACHINE SUB-ASSEMBLY	X01-6200-2



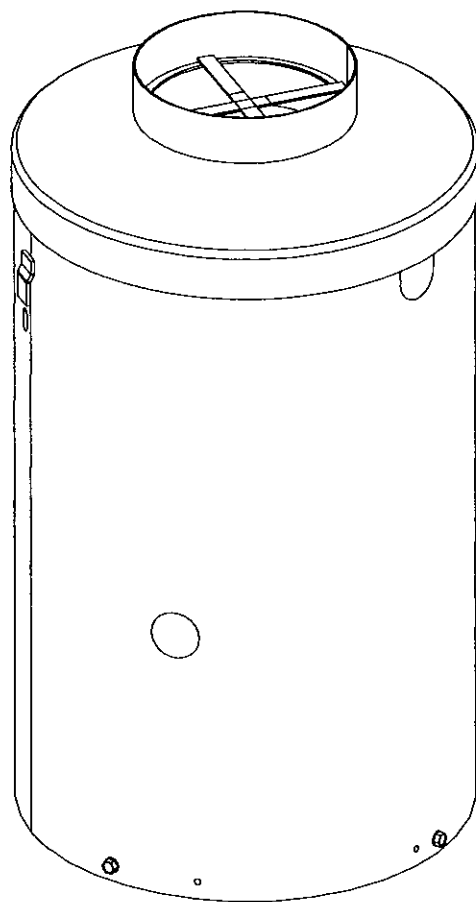
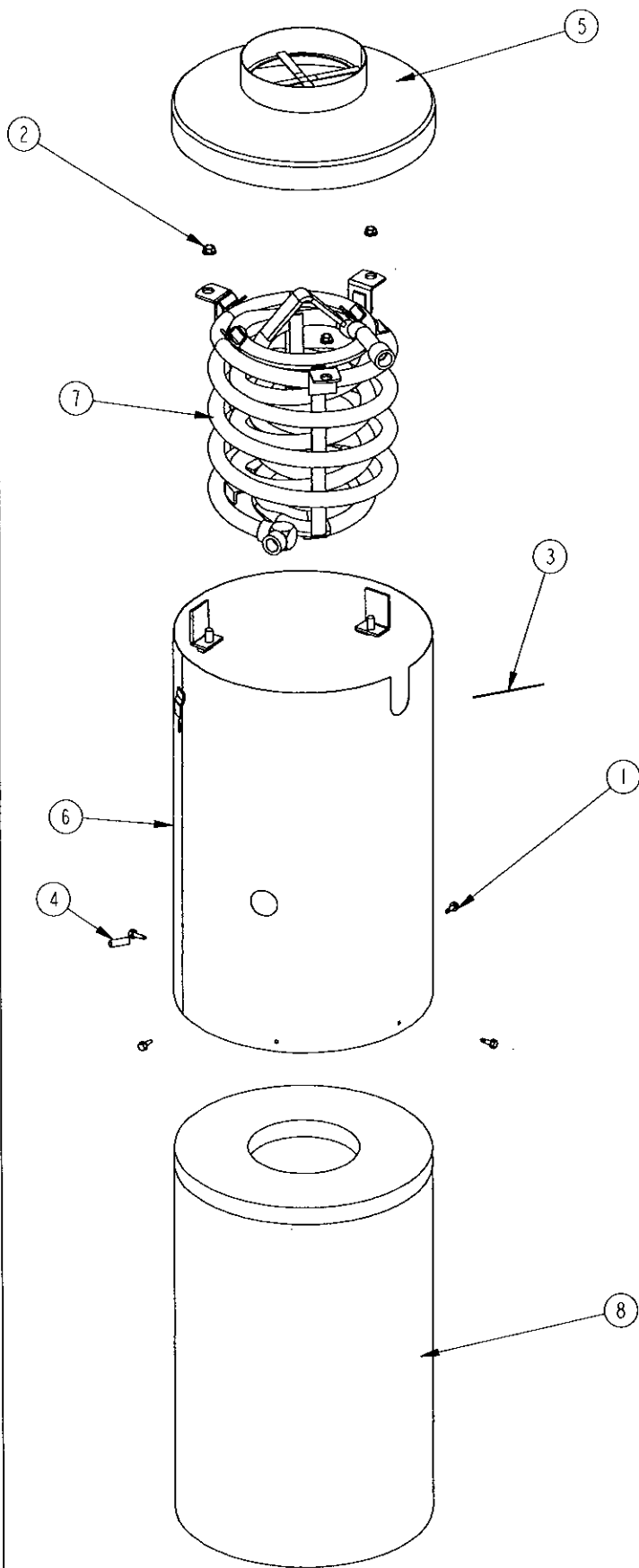
A E01-4008-2 WAS E01-4008-1, 4/27/10 LG

TITLE	12-320 ED OIL GC 4-WHL	
DESCRIPTION	230V 1PH 4HP AR	
DATE	30-Apr-09	DWG# A01-4025-1

# BILL OF MATERIALS

ITEM	QTY	PART DESCRIPTION	PART \ DRW#
1	4	SCREW	02-101600
2	3	NUT	02-301300
3	1	VINYL EDGING	1903-4
4	1	1/2" FIBERFAX ROPE INSULATION	2005-4
5	1	STACK HEAD WELDMENT	B01-1006
6	1	WRAPPER WELDMENT	B01-2067
7	1	COIL WELDMENT	B01-6223
8	1	INSULATION PACKAGE	H01-2003

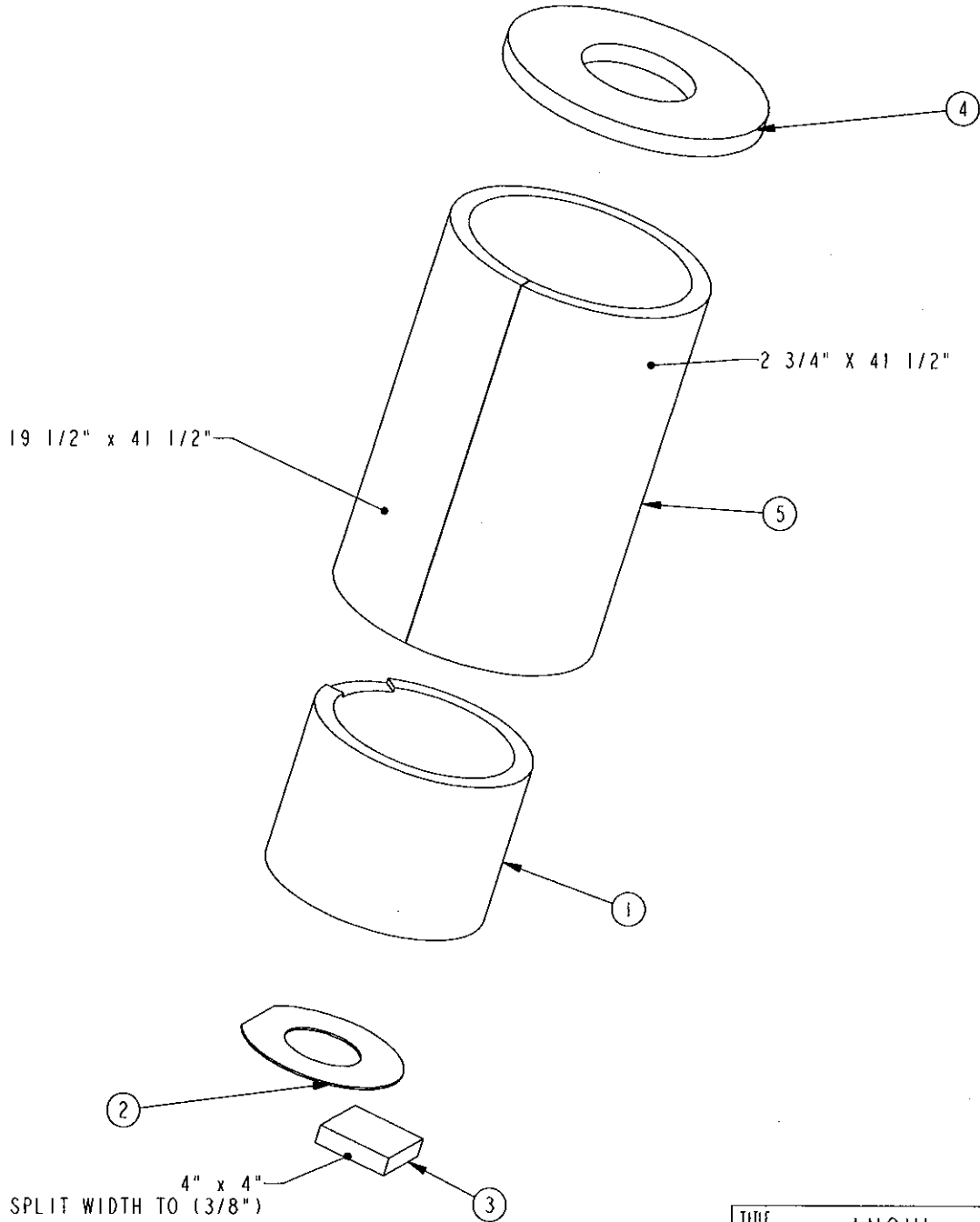
NOTE: WRAP COIL INLET HOLE WITH 4" OF 1/2" FIBERFAX ROPE INSULATION. PUT 4" OF VINYL ON COIL OUTLET HOLE.



TITLE	ECONOMY JR SIDE OUTLET CRS	
DESCRIPTION	HEAT CHAMBER ASS'Y	
DATE	03-Mar-09	DWG# B01-6224

# BILL OF MATERIALS

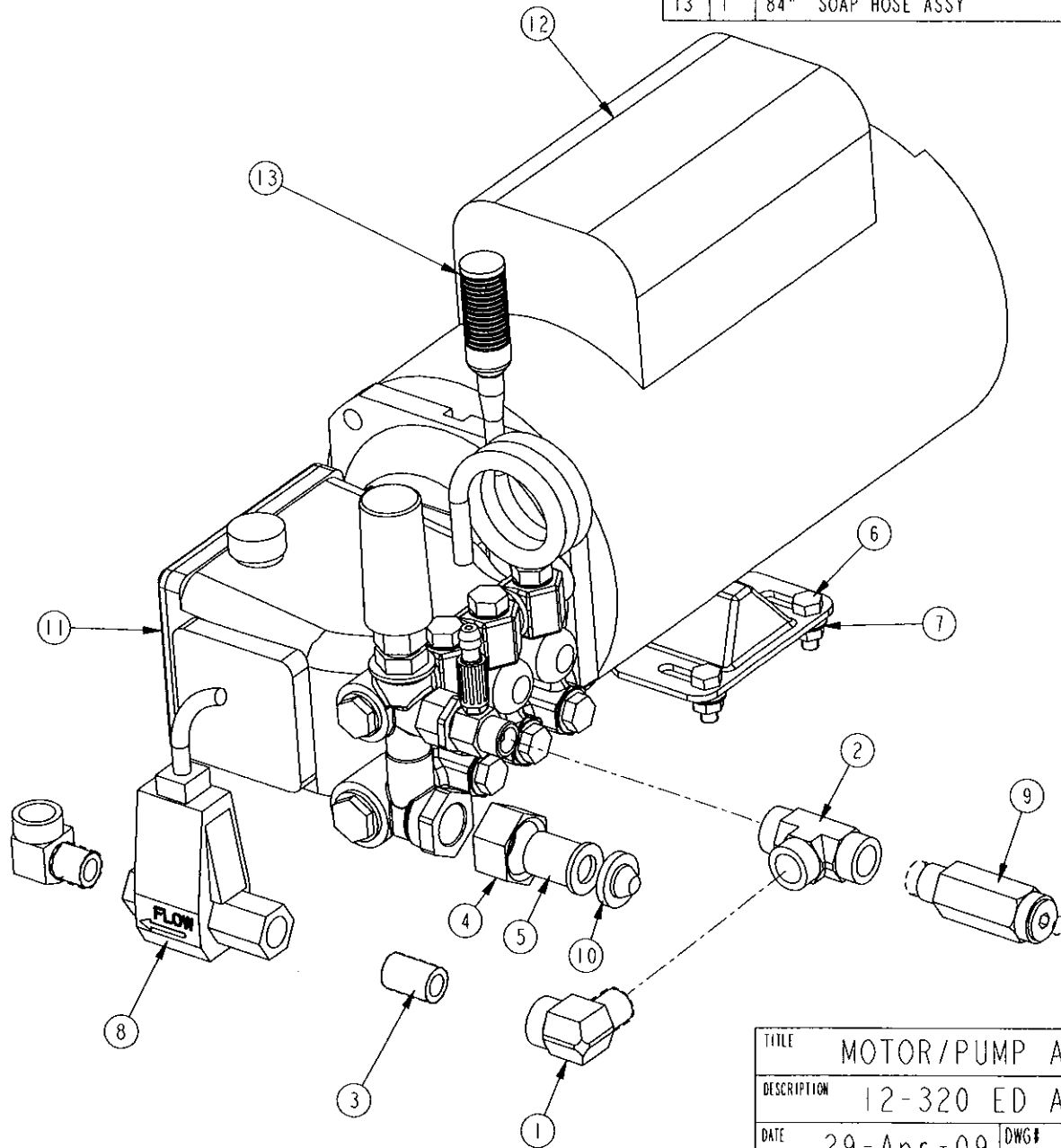
ITEM	QTY	PART DESCRIPTION	PART \ DRW#
1	1	INSULATION BUCKET	2019
2	1	BURNER GASKET	10-111236-1
3	1	INSULATION	2001-4-4
4	1	STACK HEAD RING 14/6	H01-1002
5	1	BLANKET	H01-1005



TITLE	INSUL. PACKAGE	
DESCRIPTION	INSULATION ASSY	
DATE	3/3/09	DWG# H01-2003

# BILL OF MATERIALS

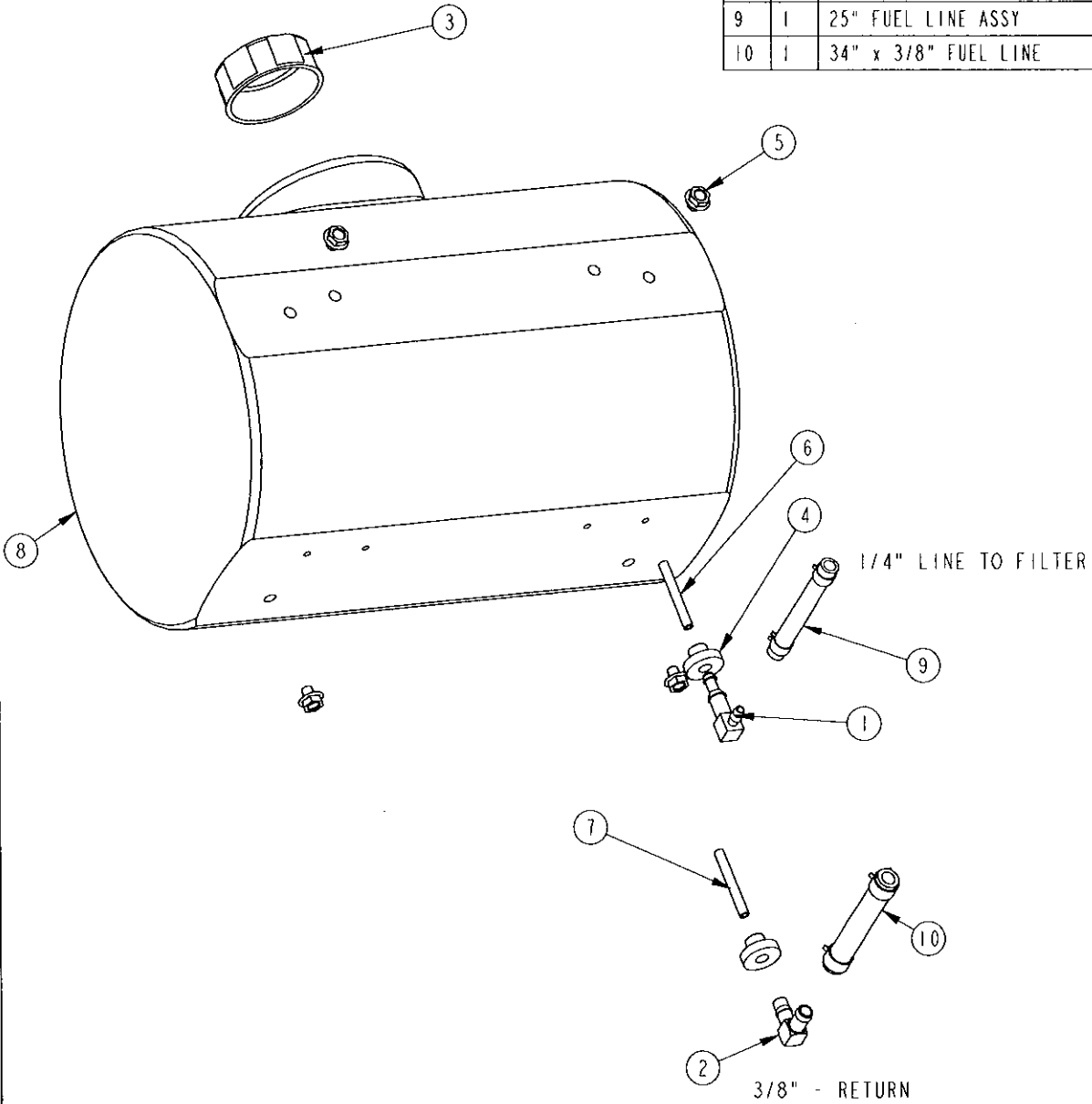
ITEM	QTY	PART DESCRIPTION	PART \ DRW#
1	2	ELBOW	01-131204
2	1	TEE	01-161204
3	1	NIPPLE	01-271004
4	1	NUT	01-401000
5	1	HOSE ADAPTER 1/2"	01-401010
6	4	BOLT	02-121100
7	4	NUT	02-301200
8	1	FLOW SWITCH	04-101920
9	1	RELIEF VALVE	05-111310
10	1	SCREEN	05-121501
11	1	PUMP	08-175500
12	1	MOTOR	09-111820
13	1	84" SOAP HOSE ASSY	E01-0020



TITLE	MOTOR/PUMP ASSEMBLY	
DESCRIPTION	12-320 ED AR PUMP	
DATE	29-Apr-09	DWG# C01-4007-2

# BILL OF MATERIALS

ITEM	QTY	PART DESCRIPTION	PART \ DRW#
1	1	BARB	01-411113
2	1	FITTING - 90°	01-411118
3	1	CAP	01-431203
4	2	GROMMET	01-411112-1
5	4	BOLT	02-121001
6	1	TUBING	1051-2
7	1	TUBING	1051-6
8	1	FUEL TANK	29-131125
9	1	25" FUEL LINE ASSY	E01-0335-25
10	1	34" x 3/8" FUEL LINE	E01-0363-34

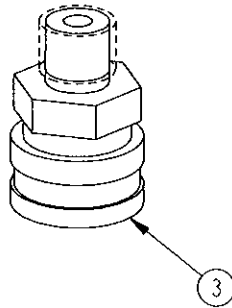
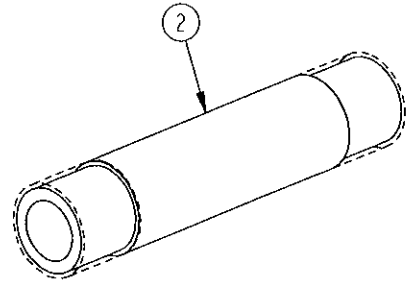
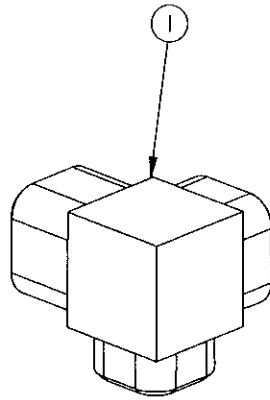
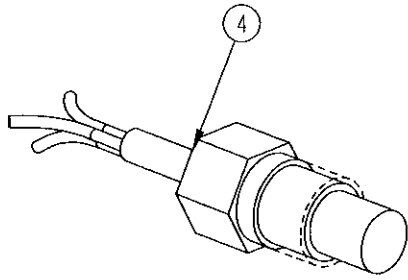


TITLE	FUEL TANK ASS'Y
DESCRIPTION	JR - 12-000
DATE	17-Sep-04
DWG#	E01-4001-1

B 8/3/05 BK CHANGED VIEW OF TANK; ITEM #4 WAS ADDED' ITEM #9 & #10 WAS CHG'D  
 A 5/18/05 BK TANK WAS 29-131105

# BILL OF MATERIALS

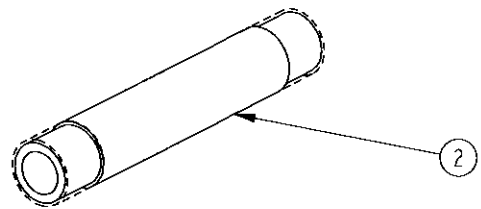
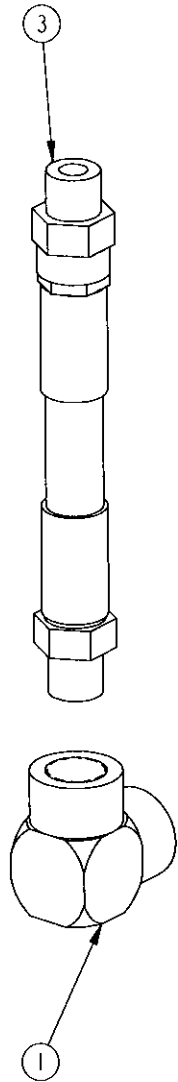
ITEM	QTY	PART DESCRIPTION	PART \ DRW#
1	1	ELBOW, SO	01-151304
2	1	NIPPLE	01-281604
3	1	COUPLER	01-421200
4	1	SENSOR	04-101003



TITLE	COIL OUTLET ASS'Y	
DESCRIPTION	12-000 ES	
DATE	03-Aug-05	DWG# E01-4007

# BILL OF MATERIALS

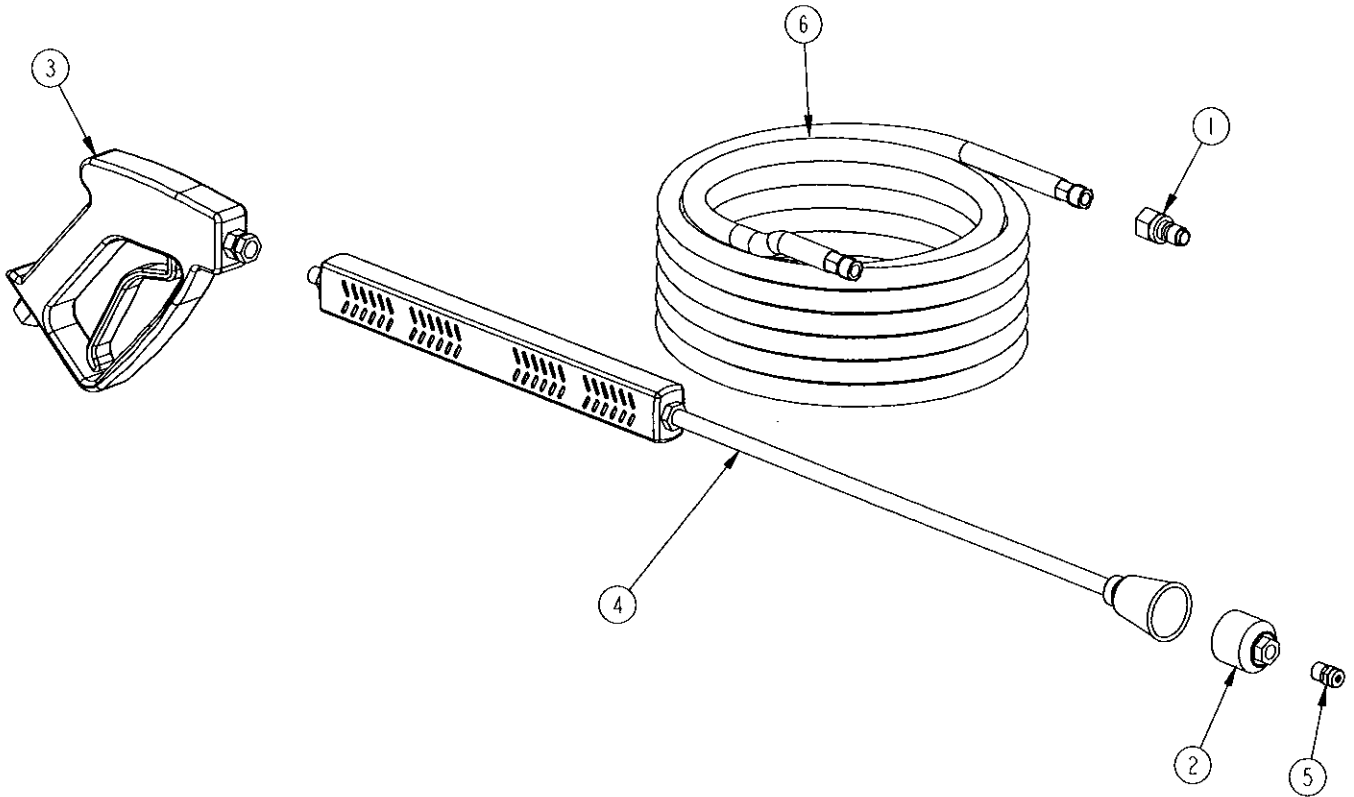
ITEM	QTY	PART DESCRIPTION	PART \ DRWH
1	1	ELBOW	01-111304
2	1	NIPPLE	01-281804
3	1	HOSE	11-111725



TITLE	COIL INLET ASS'Y	
DESCRIPTION		
DATE	27-April-10	DWG# E01-4008-2

# BILL OF MATERIALS

ITEM	QTY	PART DESCRIPTION	PART \ DRW#
1	1	QUICK COUPLER	01-421300
2	1	ADJ. NOZZLE HOLDER	06-151960
3	1	TRIGGER	06-152500
4	1	LANCE	06-201300
5	1	WASH JET	06-415040
6	1	HOSE	11-114015

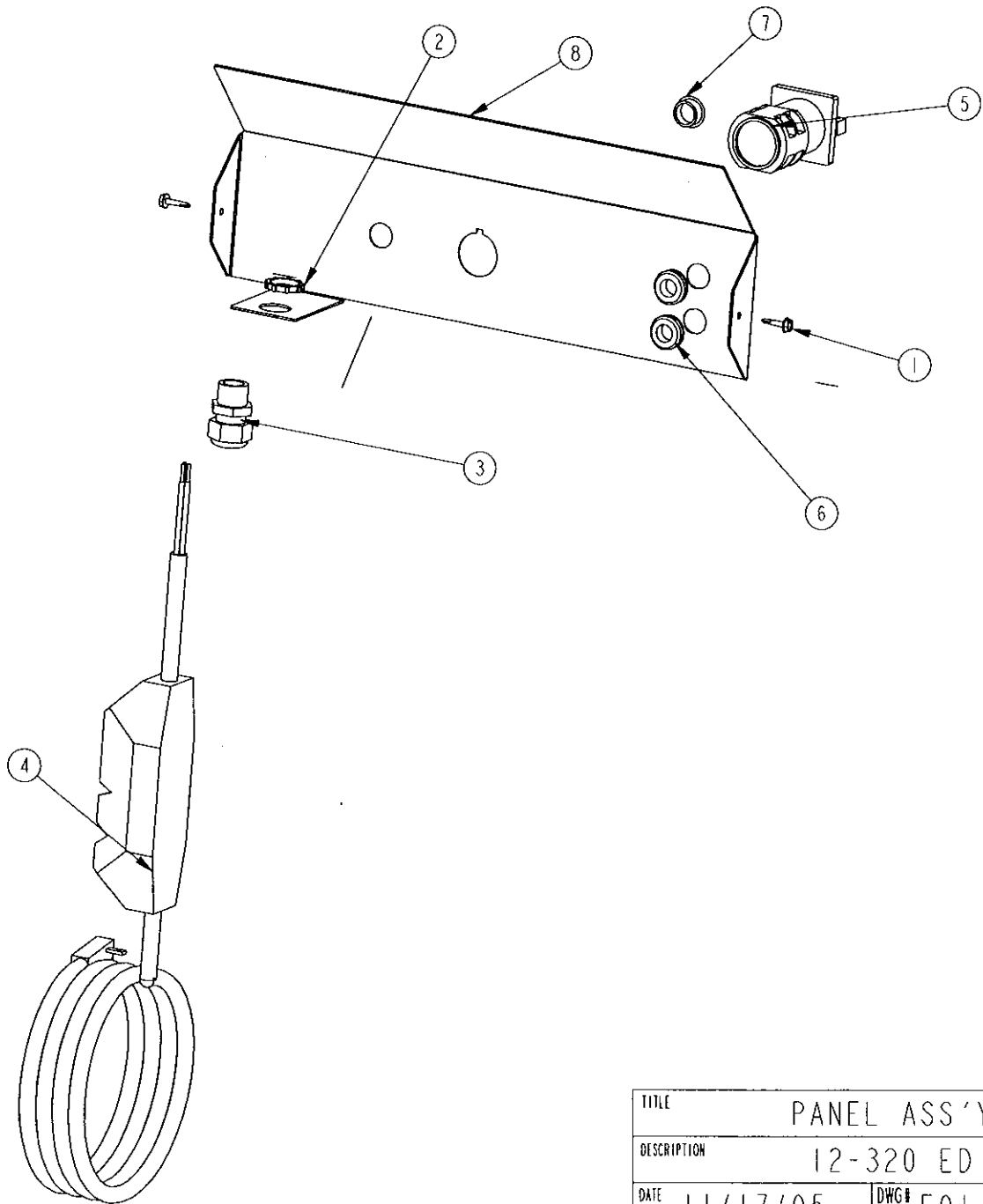


TITLE	GUN/LANCE/HOSE ASSEMBLY	
DESCRIPTION	40 FT. HOSE	
DATE	11/17/05	DWG# E01-6001-A



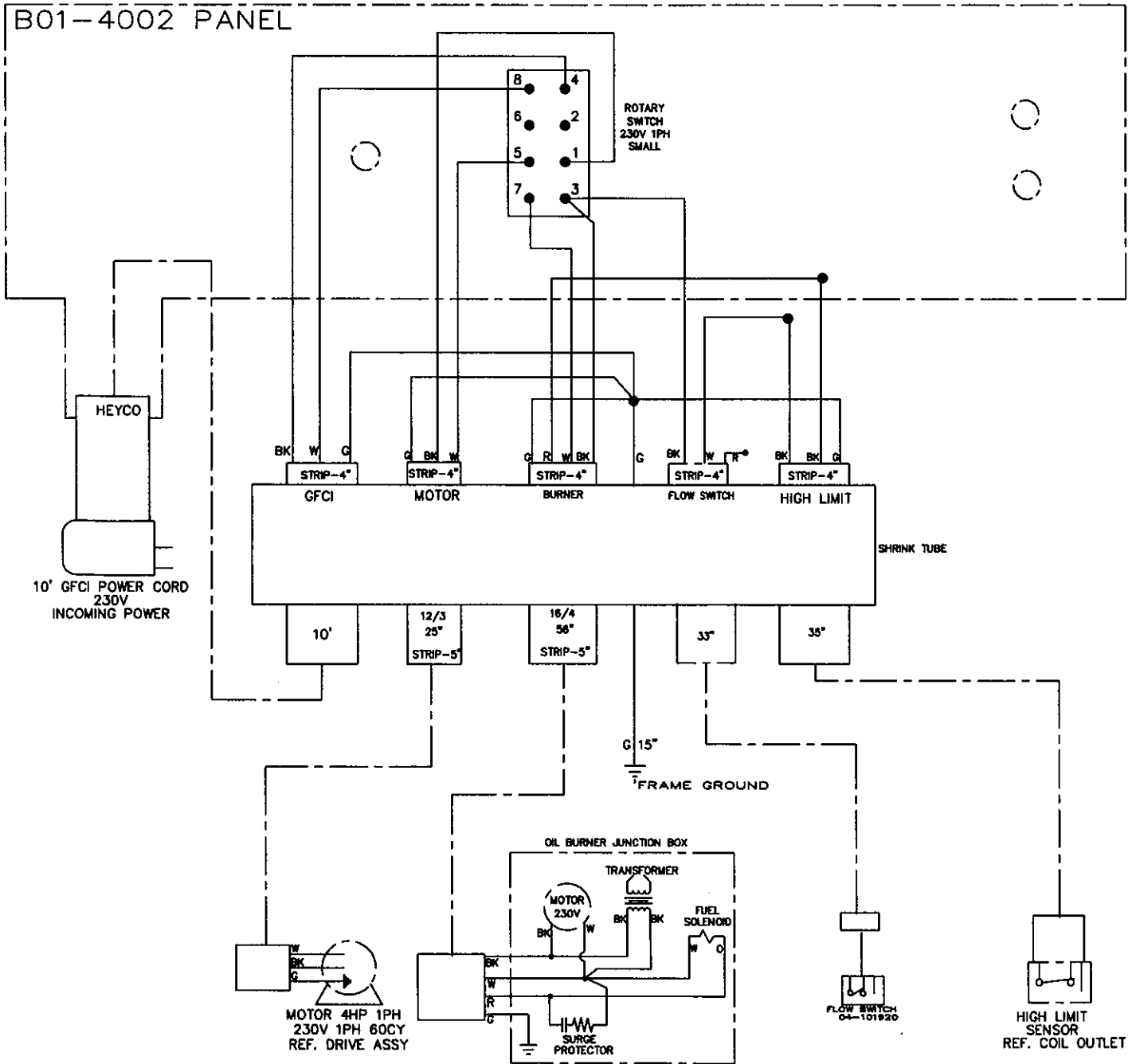
# BILL OF MATERIALS

ITEM	QTY	PART DESCRIPTION	PART \ DRW#
1	2	SCREW	02-101400
2	1	NUT	03-191005
3	1	HEYCO CONN.	03-192520
4	1	GFCI	03-211719
5	1	SWITCH	03-222101
6	2	TIP GROMMET	03-241000
7	1	HOLE PLUG	03-242004
8	1	CONTROL PANEL	B01-4002



TITLE	PANEL ASS'Y	
DESCRIPTION	12-320 ED	
DATE	11/17/05	DWG# F01-6210

B01-4002 PANEL



SOAP LINE 7'  
 SOAP LINE 10"

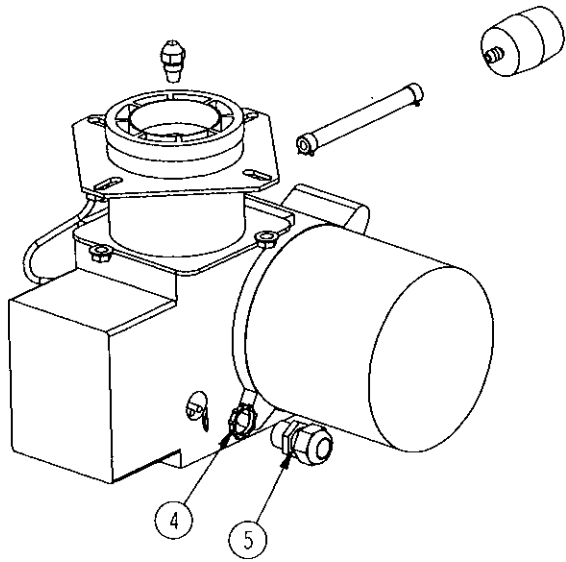
WIRE COLOR CODES:

- BK= BLACK
- C= GREEN
- W= WHITE
- BL= BLUE
- R= RED
- O= ORANGE
- Y= YELLOW
- BR= BROWN
- V= VIOLET
- BK/BL= BLACK WIRE WITH BLUE TAPE.
- W/R= WHITE WIRE WITH RED TAPE.
- G/R= GREEN WIRE WITH RED TAPE.

TITLE	WIRING DIAGRAM	
DESCRIPTION	12-320 ED 230V 1PH 4HP	
DWG#	F01-6211	

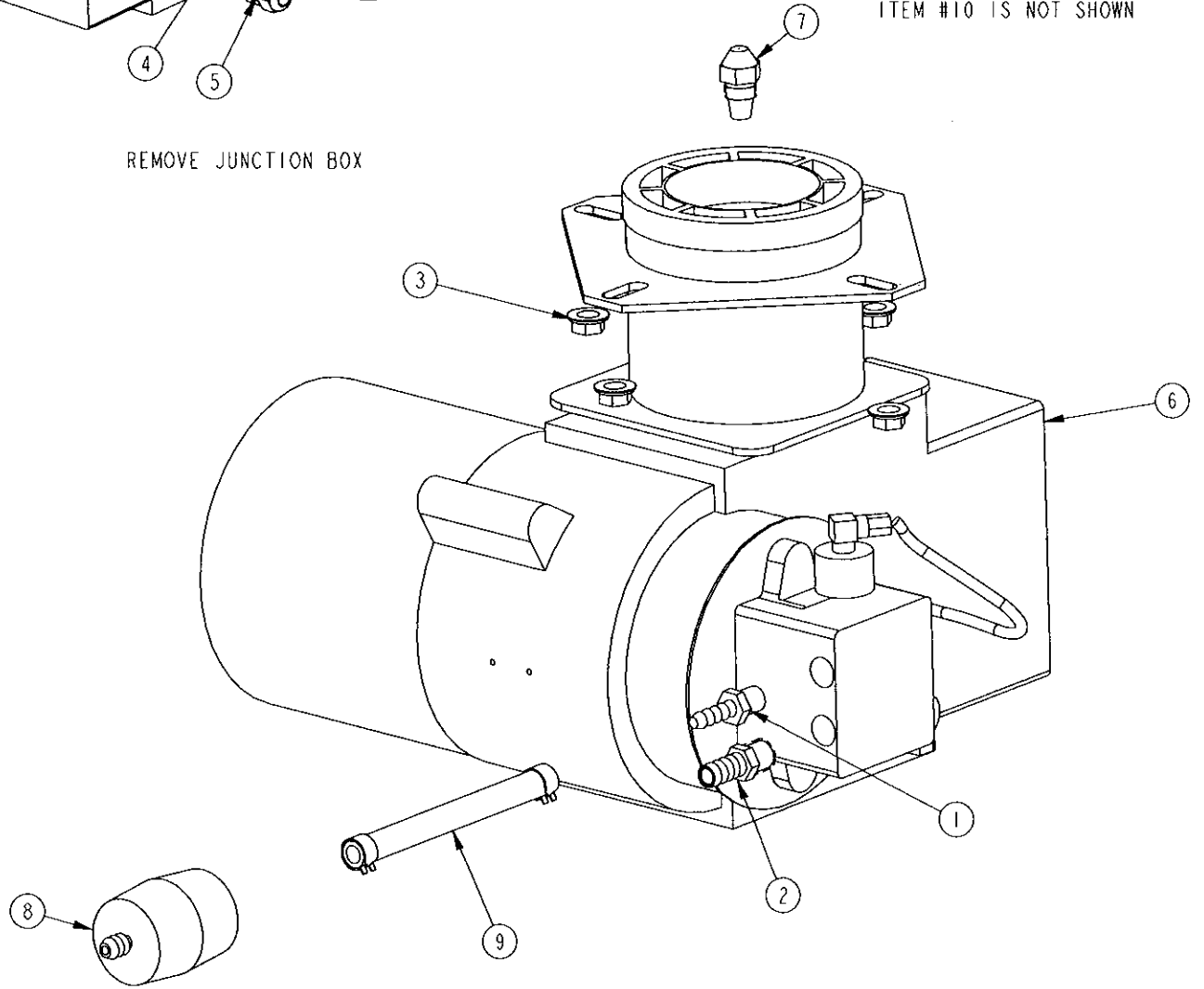
# BILL OF MATERIALS

ITEM	QTY	PART DESCRIPTION	PART \ DRWH
1	1	HOSE BARB	01-411100
2	1	HOSE BARB	01-411101
3	4	NUT	02-301300
4	1	NUT	03-191005
5	1	HEYCO CONN.	03-192520
6	1	BURNER	10-111031
7	1	NOZZLE	10-201305
8	1	FUEL FILTER	10-301150
9	1	4" FUEL LINE ASS'Y	E01-0335-4
10	1	VOLTAGE SUPPRESSOR ASSY.	F01-0500



REMOVE JUNCTION BOX

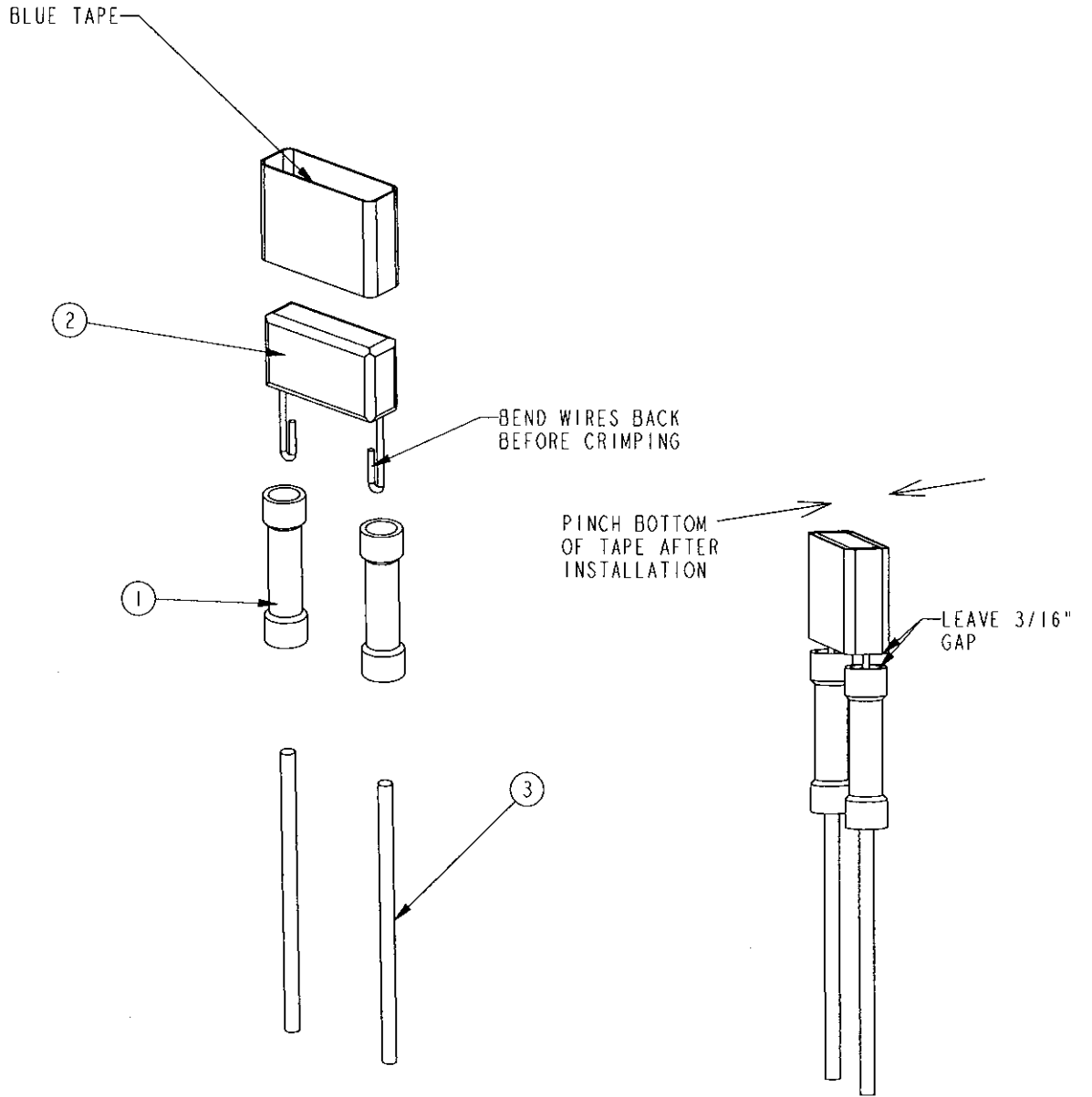
ITEM #10 IS NOT SHOWN



TITLE	BURNER ASS'Y	
DESCRIPTION	12-325 ES	
DATE	03-Aug-05	DWG# 601-6203

# BILL OF MATERIALS

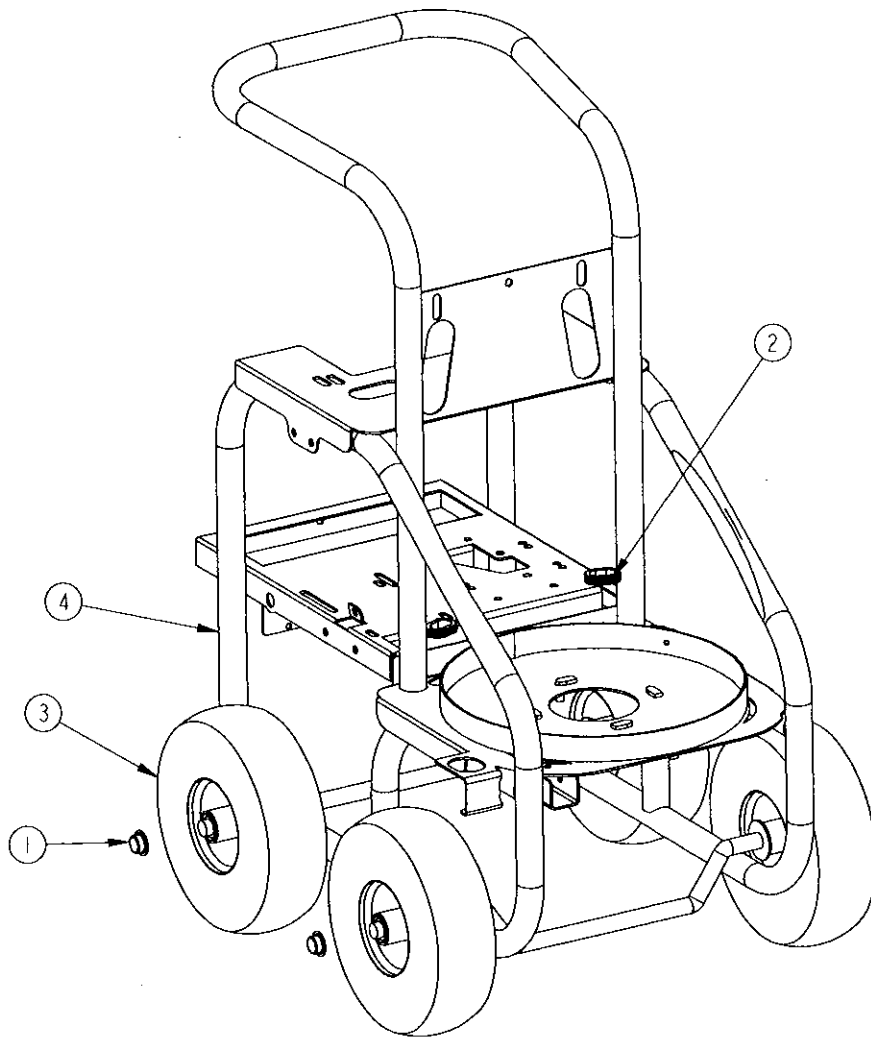
ITEM	QTY	PART DESCRIPTION	PART \ DRW#
1	2	INLINE CONNECTOR, BLUE	03-181500
2	1	VOLT SUPPRESSOR	04-101050
3	2	WHITE WIRE: 16 Ga.	2136-4



TITLE		VOLTAGE SUPPRESSOR ASSY.	
DESCRIPTION			
DATE	16-Sep-05	DWG#	F01-0500

# BILL OF MATERIALS

ITEM	QTY	PART DESCRIPTION	PART \ DRW#
1	4	PUSH CAP	02-521203
2	2	GROMMET	03-241105
3	4	WHEEL	12-151250
4	1	FRAME WELDMENT	B01-6207-3



TITLE	MACHINE SUB-ASSEMBLY	
DESCRIPTION	JR - SILVER WHEELS	
DATE	10-Mar-09	DWG# X01-6200-2