



WHIRL-A-WAY

OPERATION MANUAL

Model #

85.403.003

85.403.005

85.403.007

85.403.009

85.403.010

85.403.011



INTRODUCTION



Attention: Read through the complete manual prior to the initial use of your Whirl-A-Way

Using the Operator's manual

The operating manual is an important part of your Whirl-A-Way and should be read thoroughly before initial use, and referred to often to make sure adequate safety and service concerns are being addressed.

Reading the owner's manual thoroughly will help avoid any personal injury or damage to your pump. The information in this manual will offer you the most effective tools for cleaning as well as the safest. By knowing how best to operate this machine you will be better positioned to show others who may also operate the unit.

This manual contains information for the complete range of BE Whirl-A-Ways, and is placed in order starting from the safety requirements to the operating functions of your pump. You can refer back to the manual at any time to help troubleshoot any specific operating functions, so store it with the machine at all times.



Set-Up

1. Fit the lower portion of the handle into the mounting brackets on the cover and secure with the bolts or the pins & clips.
2. Next, tighten the “fixed” hose end into the gun mounted onto the upper portion of the handle. Use teflon tape on the hose ends.
3. Once this is complete, join the two sections of the handle together and secure with the bolt or the pin & clip. Tighten the swivel end of the hose into the top of the rotary head.
4. Turn the cover over and check to ensure that the nozzle tips are securely tightened and the spray pattern is in line with the rotary arm.
5. It is important to adjust and tighten the rotary head so the rotary arm spray tips are a minimum of 1” distance from the surface being cleaned.

Operation

The Surface Cleaning System you have purchased connects directly to your high pressure hose and pressure washer by means of quick couplers, operating to a maximum of 4000 PSI.

This Whirl-a-Way is designed to operate with both hot & cold water pressure washers. We do not recommend the use of hot water as the nylon brush skirt will soften and wear prematurely, voiding any warranty. We recommend that you supply grease to the rotary head every 30 – 40 hours of use.

During operation, should you experience a buildup of small stones or other foreign material within the cover, we recommend that you simply tip the cleaner on its side at 45° which should expel any foreign materials. This will give longer wear to your tips and swivel arm.

The tips that have been installed on your surface cleaning system permit the use of your cleaner with a pressure washer producing up to 7 GPM at 4000 PSI. Higher GPM tips should be installed if your pressure washer has a higher GPM/PSI rating. Periodically check the tips to ensure they are not plugged by dirt particles.

It is very important when operating your Whirl-a-Way, that you maintain a continuous motion. Should you leave the cleaner in a stationary position, the surface being cleaned can be seriously damaged by the high pressure. The distance of the nozzle tips from the surface can be adjusted by loosening the bolt on the rotary head mounting collar and adjusting the rotary head up or down. Be certain the allen head bolt is tightened again to prevent the rotary head from moving during operation. Please ensure that your rotary head is adjusted to maintain a minimum of 1” clearance

between the spray tips and the surface being cleaned.

While operating your surface cleaning system, please ensure that the nylon brush skirt remains in contact with the surface being cleaned. Do not operate on vertical or overhead surfaces. We strongly recommend that safety eye goggles, gloves and work boots be worn when operating this Whirl-a-Way. Keep hands and feet away from the high pressure, high speed rotating arm that is protected by the plastic cover.

Should your surface cleaner not be used for long periods of time, it is recommended that you remove the hose from the top of the rotary head and a vegetable oil be used to lubricate the swivel head's internal parts.

Manually turn the rotary arm to allow lubrication of all internal parts before storing.

You will quickly find your surface cleaning system a welcome addition to your pressure washing applications. It is designed to give you a safe and rapid method for cleaning hard surfaces, and will save you time in comparison to using a conventional gun and wand. The durability of this surface cleaning system is enhanced by the way it is handled by the operator. Please take care to ensure that the Whirl-A-Way is not continuously being swung against buildings, curbs, etc., which can damage the cover. Also, be aware that the high speed rotating arm must not come in contact with rigid protruding objects which can quickly damage or completely break off the steel arm. Finally, do not apply excessive weight to the plastic cover.

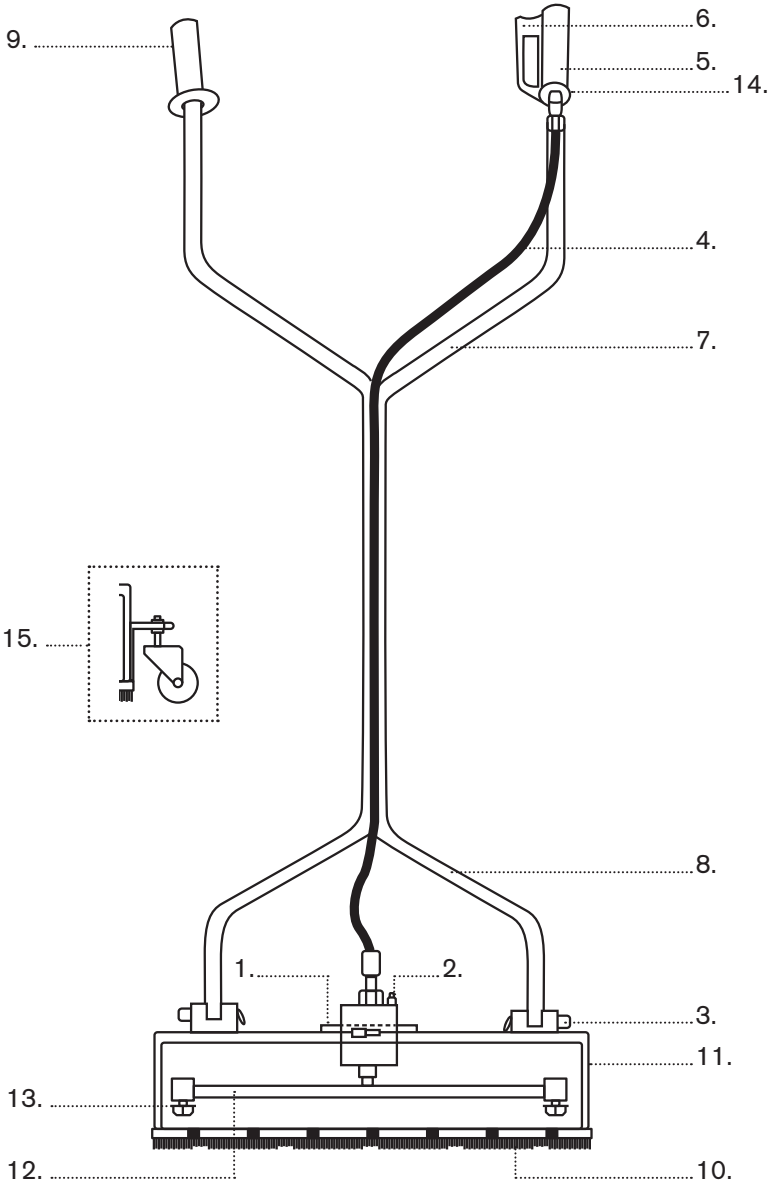


PARTS DIAGRAM

85.403.003 - BE1600WAW - 16"

85.403.007 - BE2000WAW - 20"

85.403.011 - 20" with castors



85.403.003 - BE1600WAW - 16"

| NO# | PART # | DESCRIPTION |
|------------|---------------|----------------------------|
| 1 | 85.792.003 | Bracket, Mounting Head 16" |
| 2 | 85.790.004G | Rotary Head, 16" |
| 3 | 85.792.004 | Mounting Blocks |
| 4 | DN1037 | Hose, 62" x 3/8" |
| 5 | AC7501 | Easy Pull Gun |
| 6 | 85.300.105 | Plug, 3/8" MNPT |
| 7 | 85.792.001 | Handle, Upper |
| 8 | 85.792.008 | Handle, Lower |
| 9 | 85.602.005 | Hand Grip |
| 10 | 85.792.010 | Brush, 16" |
| 11 | 85.792.009 | Cover, Polypropylene 16" |
| 12 | 85.792.011 | Rotary Arm, 16" |
| 13 | 85.225.025 | Nozzle, 25 Deg. 025 |
| 14 | 85.791.020 | Sleeve For DC5090 WAW Gun |

85.403.007 - BE2000WAW - 20"

| NO# | PART # | DESCRIPTION |
|------------|---------------|----------------------------|
| 1 | 85.792.003 | Bracket, Mounting Head 20" |
| 2 | 85.790.004G | Rotary Head, 20" |
| 3 | 85.792.004 | Mounting Blocks |
| 4 | DN1037 | Hose, 62" x 3/8" |
| 5 | AC7501 | Easy Pull Gun |
| 6 | 85.300.105 | Plug, 3/8" MNPT |
| 7 | 85.792.001 | Handle, Upper |
| 8 | 85.792.002 | Handle, Lower |
| 9 | 85.602.005 | Hand Grip |
| 10 | 85.792.006 | Brush, 20" |
| 11 | 85.792.005 | Cover, Polypropylene 20" |
| 12 | 85.792.007 | Rotary Arm, 20" |
| 13 | 85.225.025 | Nozzle, 25 Deg. 025 |
| 14 | 85.791.020 | Sleeve For DC5090 WAW Gun |

85.403.011 - 20" with castors

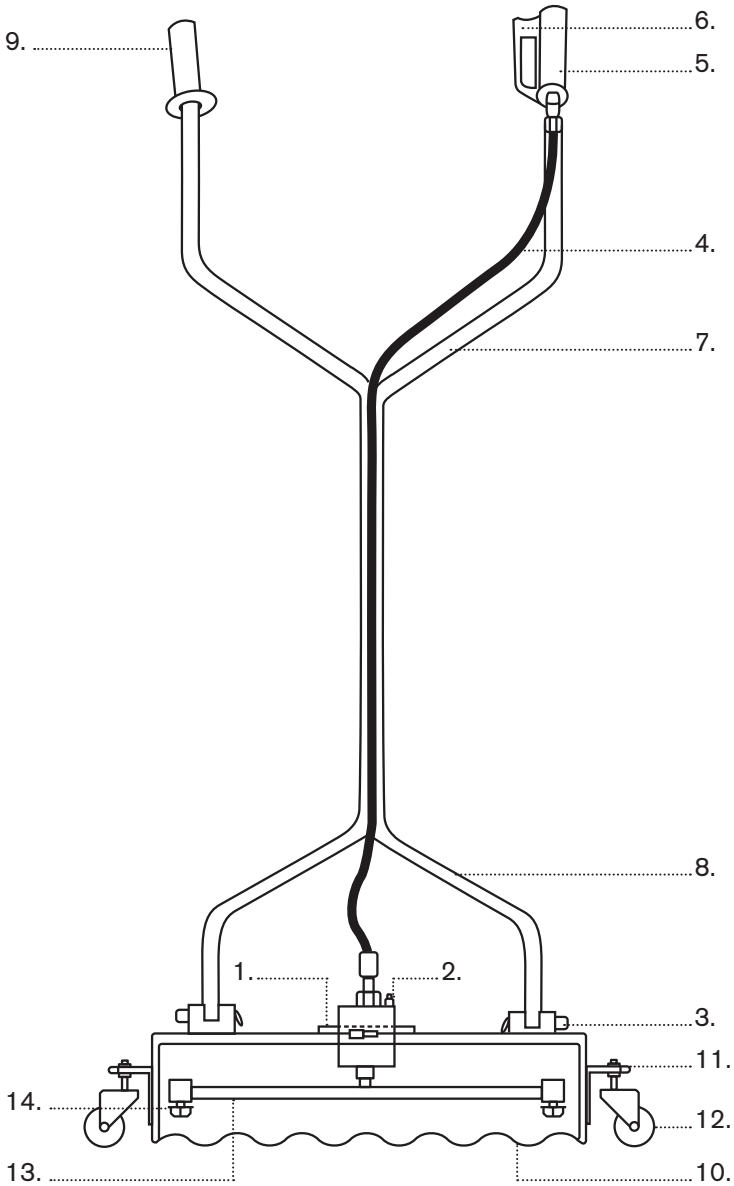
See 85.403.007 for parts 1-14.

| NO# | PART # | DESCRIPTION |
|------------|---------------|--------------------|
| 15 | 85.790.016 | Castor Kit |



PARTS DIAGRAM

85.403.005 - BE1800WAW - 18"



**85.403.005 - BE1800WAW - 18"**

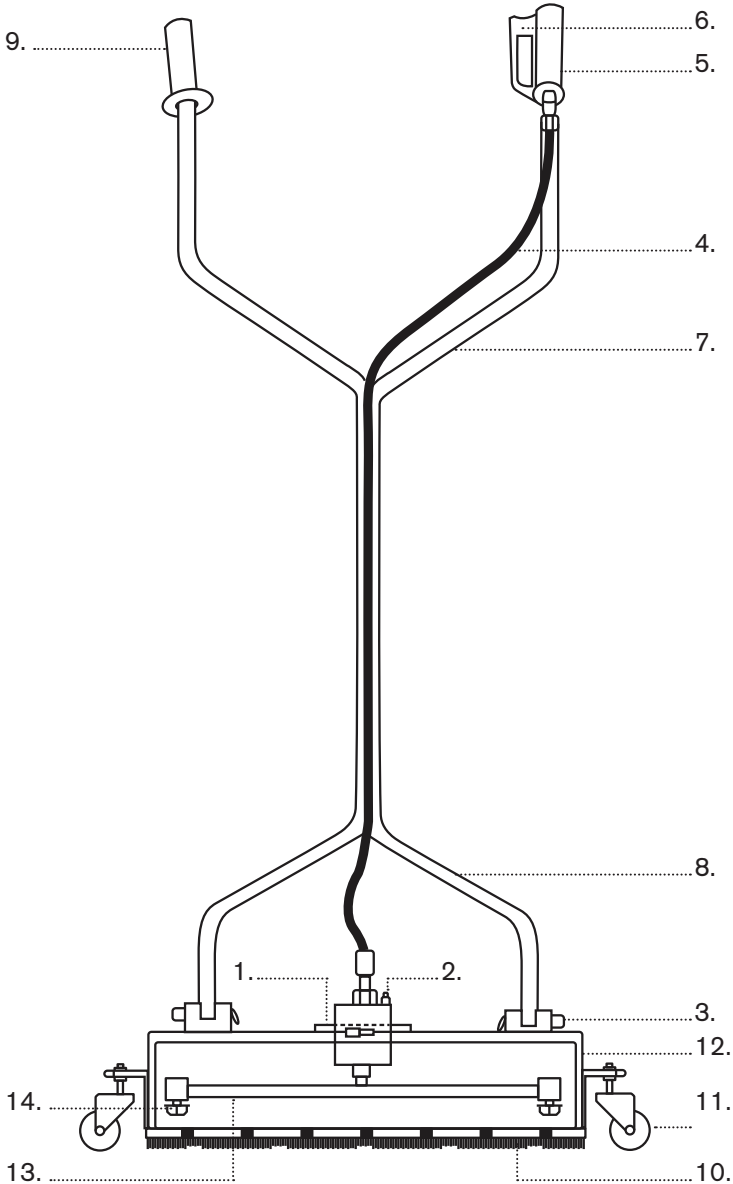
| NO# | PART # | DESCRIPTION |
|------------|---------------|----------------------------|
| 1 | 85.791.001 | Bracket, Mounting Head 18" |
| 2 | 85.790.006 | Rotary Head, 18" |
| 3 | 85.419.116 | Mounting Blocks |
| 4 | 85.238.057 | Hose, 62" x 3/8" |
| 5 | 85.202.017 | Spray Gun |
| 6 | 85.300.105 | Plug, 3/8" NPTM |
| 7 | 85.419.041 | Handle, Upper 18" |
| 8 | 85.419.040 | Handle, Lower 18" |
| 9 | 85.602.005 | Hand Grip |
| 10 | 85.790.007 | Castor Wheel |
| 11 | 85.419.023 | Castor Bracket |
| 12 | 85.419.019 | Cover, Polypropylene 18" |
| 13 | 85.791.007 | Rotary Arm, 14" |
| 14 | 85.225.025 | Nozzle, 25 Deg. 025 |



PARTS DIAGRAM

85.403.009 - BE2000SS - 20" - Stainless Steel

85.403.010 - BE2400SS - 24" - Stainless Steel



85.403.009 - BE2000SS - 20" - Stainless Steel

| NO# | PART # | DESCRIPTION |
|------------|---------------|----------------------------|
| 1 | 85.791.002 | Bracket, Mounting Head 20" |
| 2 | 85.790.004 | Rotary Head, 20" |
| 3 | 85.419.117 | Mounting Blocks |
| 4 | 85.238.057 | Hose, 62" x 3/8" |
| 5 | 85.202.115 | Spray Gun |
| 6 | 85.300.105S | Plug, 3/8" NPTM |
| 7 | 85.419.036 | Handle, Upper 20" |
| 8 | 85.419.035 | Handle, Lower 20" |
| 9 | 85.602.005 | Hand Grip |
| 10 | 85.790.014S | Brush Skirt, 20" |
| 11 | 85.790.009 | Castor Wheel |
| 12 | 85.419.020S | Cover, Stainless Steel 20" |
| 13 | 85.791.012 | Rotary Arm, 16" 3-Way |
| 14 | 85.225.020 | Nozzle, 25 Deg. 020 |

85.403.010 - BE2400SS - 24" - Stainless Steel

| NO# | PART # | DESCRIPTION |
|------------|---------------|----------------------------|
| 1 | 85.791.002 | Bracket, Mounting Head 24" |
| 2 | 85.790.004 | Rotary Head, 24" |
| 3 | 85.419.117 | Mounting Blocks |
| 4 | 85.238.057 | Hose, 62" x 3/8" |
| 5 | 85.202.115 | Spray Gun |
| 6 | 85.300.105S | Plug, 3/8" NPTM |
| 7 | 85.419.036 | Handle, Upper 24" |
| 8 | 85.419.035 | Handle, Lower 24" |
| 9 | 85.602.005 | Hand Grip |
| 10 | 85.790.019S | Brush Skirt, 24" |
| 11 | 85.790.020 | Castor Wheel |
| 12 | 85.419.024S | Cover, Stainless Steel 24" |
| 13 | 85.791.010S | Rotary Arm, 20" |
| 14 | 85.225.020 | Nozzle, 25 Deg. 020 |



Nozzle Requirement

| PUMP OUTPUT | NOZZLE REQUIREMENT | QTY |
|--------------------|---------------------------|------------|
| 3 GPM | 85.225.020 (2 GPM/25°) | 2 |
| 4 GPM | 85.225.025 (2.5 GPM/25°) | 2 |
| 5 GPM | 85.225.030 (3 GPM/25°) | 2 |
| 6 GPM | 85.225.035 (3.5 GPM/25°) | 2 |

Rotary Head Repair Parts

A repair kit for this Whirl-a-Way's rotary head, is available.

If you encounter problems with the rotary head after the six month warranty has expired, this repair kit (part #85.790.010) allows you to replace the inner components very quickly.

The rotary head has a snap ring on the bottom holding all the bearings inside. By removing the snap ring and washer, you can tap off the outer shell with a hammer while the output shaft is held in a vice. The rotary head repair kit can then be used to replace the worn items inside the rotary head shell.

| NO# | PART # | DESCRIPTION |
|------------|---------------|--------------------------|
| 1 | 85.790.010 | Rotary Head Rebuild Kit |
| 2 | 85.790.001 | Inlet Valve |
| 3 | 85.790.002 | Inlet Valve Viton O-Ring |
| 4 | 85.790.011 | Outlet Shaft |