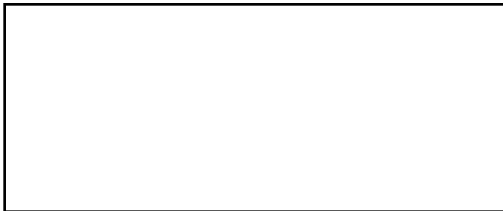




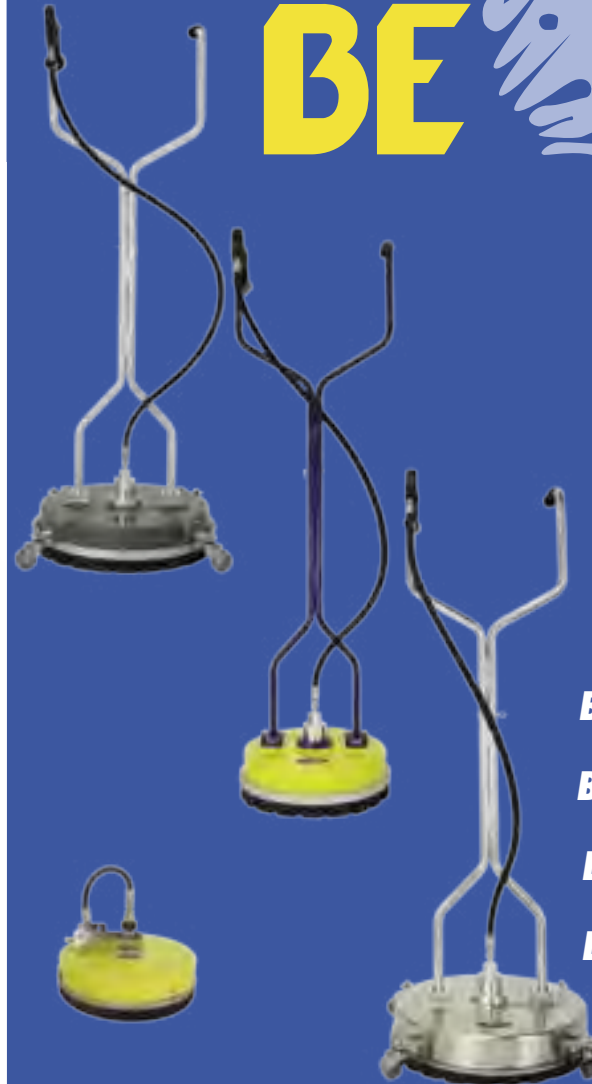
www.bepressure.com

DISTRIBUTED BY



WHIRL-A-WAY OPERATIONS MANUAL

BE



BE-1200WAW

BE-1600WAW

BE-1800WAW

BE-2000WAWY

BE-2200WAWG

BE-2000WAWS

BE-2400WAWS

16" - 24" SET-UP PROCEDURES

BE

Thank you for purchasing a BE Whirl-A-Way. We know that you had a choice in the purchase of a flat surface cleaner, and we would like to congratulate you on purchasing our very affordable and durable cleaner.

1



We recommend that you first fit the lower portion of the handle into the mounting brackets on the cover and secure with the bolts or the pins & clips.

2



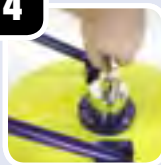
Next, tighten the "fixed" hose end into the gun mounted onto the upper portion of the handle. Use teflon tape on the hose ends and tighten until snug. Do not overtighten.

3



Once this is complete, join the two sections of the handle together and secure with the bolt or the pin & clip.

4



Next, tighten the swivel end of the hose into the top of the rotary head until snug.

5



Turn the cover over and check to ensure that the nozzle tips are securely tightened and the spray pattern is in line with the rotary arm.

6



Inspect the rotary head to make sure the rotary arm spray tips are a minimum of 1" distance from the surface being cleaned.

BE

Whirl-A-Way
PRESSURE SUPPLY

THE WORLD LEADER IN PRESSURE WASHERS,
SPECIALTY CLEANING EQUIPMENT,
& ACCESSORIES.



WWW.BEPRESSURE.COM



TROUBLE SHOOTING



1) If water is leaking from the bypass port in the bottom of the rotary head: Inspect the viton O-Ring in the rotary head.

2) Rotary Arm doesn't spin:

- Remove, inspect and clean nozzles. Replace if damaged
- Rotary head may not have been greased.
- Ensure there is no water leaking from the bypass port on the rotary head.

3) Leaves stripping:

- Ensure nozzles aren't damaged or plugged.
- Ensure rotary arms are straight.

ROTARY HEAD REPAIR PARTS

A repair kit for this Whirl-a-Way's rotary head is available. If you encounter problems with the rotary head after the six month warranty has expired, this repair kit (part #85.790.010) allows you to replace the inner components very quickly.

The rotary head has a snap ring on the bottom holding all the bearings inside. By removing the snap ring and washer, you can tap off the outer shell with a hammer while the output shaft is held in a vice. The rotary head repair kit can then be used to replace the worn items inside the rotary head shell.

WARRANTY

The rotary head has a six-month warranty from the date of purchase. Should you encounter problems with the rotary head within that time period, simply return the defective part for warranty to the place of purchase. If you encounter problems after the six month period has lapsed, we sell a rotary head repair kit. You can use this kit to replace the components inside the rotary head very quickly.

There is no warranty on the nylon brush ring.

All other components of the surface cleaning system have a 90-day warranty against manufacturer's defects only.

The Surface Cleaning System you have purchased connects directly to your high pressure hose and pressure washer by means of quick couplers, operating to a maximum of 4000 PSI. Please note that the 12" Whirl-A-Way connects directly to a 1/4" quick connect coupler, operating to a maximum of 2500PSI.

This Whirl-a-Way is designed to operate with both hot & cold water pressure washers.

We recommend that you supply grease to the rotary head every 30 – 40 hours of use. Simply add a small squirt of automotive grease, do not overfill with grease as it will bog down the rotary head.

During operation, should you experience a buildup of small stones or other foreign material within the cover, we recommend that you simply tip the cleaner on its side at 45° which should expel any foreign materials. This will give longer wear to your tips and swivel arm, nozzles and brush skirt (if applicable).

The tips that have been installed on your surface cleaning system permit the use of your cleaner with a pressure washer producing up to 7 GPM at 4000 PSI. Please note that the 12" Whirl-A-Way can only be used with a pressure washer producing up to 8 GPM at 2500 PSI. Periodically check the tips to ensure they are not plugged by dirt particles. As this can cause the rotary arm to stop spinning. Or stripping to be left on the surface being cleaned.

It is very important when operating your Whirl-a-Way, that you maintain a continuous motion to ensure an even clean. The distance of the nozzle tips from the surface can be adjusted by loosening the bolt on the rotary head mounting collar and adjusting the rotary head up or down. Be certain the allen head bolt is tightened again to prevent the rotary head from moving during operation. Please ensure that your rotary head is adjusted to maintain a minimum of 1" clearance between the spray tips and the

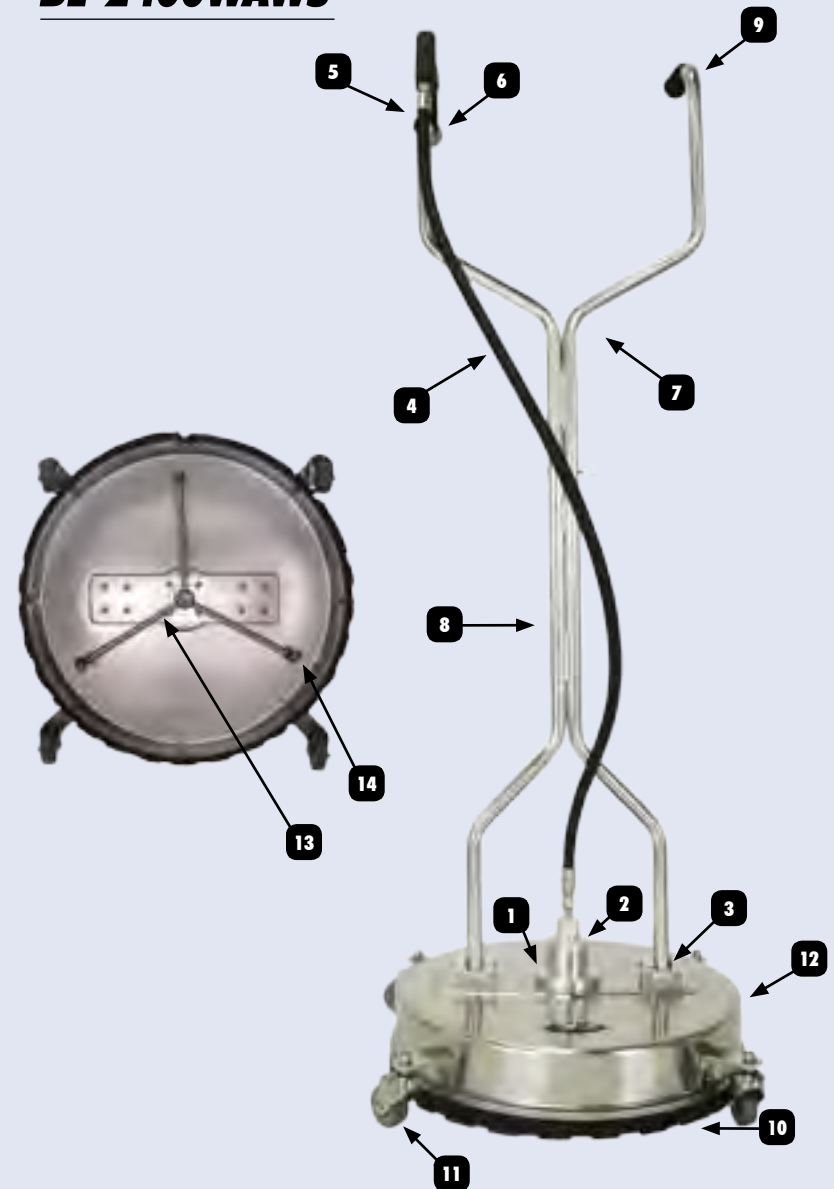
surface being cleaned.

While operating your surface cleaning system, please ensure that the nylon brush skirt remains in contact with the surface being cleaned. Do not operate on overhead surfaces. We strongly recommend that safety eye goggles, gloves and work boots be worn when operating this Whirl-a-Way. Keep hands and feet away from the high pressure, high speed rotating arm that is protected by the plastic cover.

Should your surface cleaner not be used for long periods of time, it is recommended that you remove the hose from the top of the rotary head and a vegetable oil be used to lubricate the swivel head's internal parts. Manually turn the rotary arm to allow lubrication of all internal parts before storing.

You will quickly find your surface cleaning system a welcome addition to your pressure washing applications. It is designed to give you a safe and rapid method for cleaning hard surfaces, and will save you time in comparison to using a conventional gun and wand. The durability of this surface cleaning system is enhanced by the way it is handled by the operator. Please take care to ensure that the Whirl-a-Way is not continuously being swung against buildings, curbs, etc., which can damage the cover, castors and rotary arms. Also, be aware that the high speed rotating arm must not come in contact with rigid protruding objects which can quickly damage or completely break off the steel or stainless steel arm. Do not apply excessive weight to the Whirl-A-Way cover to prevent cracks or dents that could interfere with the rotary arm.

BE-2000WAWS BE-2400WAWS



BE-2000WAWS

| No# | Part # | Description |
|-----|-------------|----------------------------------|
| 1 | 85.791.002 | Bracket, Mounting Head 20" |
| 2 | 85.790.004 | Rotary Head, 20" |
| 3 | 85.419.117 | Mounting Blocks |
| 4 | 85.238.057 | Hose, 62" x 3/8" |
| 5 | 85.202.115 | Spray Gun |
| 6 | 85.300.105S | Plug, 3/8" MNPT SS |
| 7 | 85.419.036 | Handle, Upper 20" |
| 8 | 85.419.035 | Handle, Lower 20" |
| 9 | 85.602.005 | Hand Grip |
| 10 | 85.790.014S | Brush Skirt, 20" Stainless Steel |
| 11 | 85.790.009 | Castor Wheel |
| 12 | 85.419.020S | Cover, Stainless Steel 20" |
| 13 | 85.791.012 | Rotary Arm, 3-Way |
| 14 | 85.225.020 | Nozzle, 25 Deg. 020 |

BE-2400WAWS

| No# | Part # | Description |
|-----|-------------|----------------------------|
| 1 | 85.791.002 | Bracket, Mounting Head 24" |
| 2 | 85.790.004 | Rotary Head, 24" |
| 3 | 85.419.117 | Mounting Blocks |
| 4 | 85.238.057 | Hose, 62" x 3/8" |
| 5 | 85.202.115 | Spray Gun |
| 6 | 85.300.105S | Plug, 3/8" MNPT SS |
| 7 | 85.419.036 | Handle, Upper 24" |
| 8 | 85.419.035 | Handle, Lower 24" |
| 9 | 85.602.005 | Hand Grip |
| 10 | 85.790.019S | Brush Skirt, 24" |
| 11 | 85.790.020 | Castor Wheel |
| 12 | 85.419.024S | Cover, Stainless Steel 24" |
| 13 | 85.791.010S | Rotary Arm, 24" |
| 14 | 85.225.020 | Nozzle, 25 Deg. 020 |

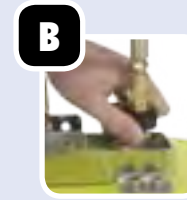
ROTARY HEAD REPAIR PARTS

| No# | Part # | Description |
|-----|------------|--------------------------|
| 1 | 85.790.010 | Rotary Head Rebuild Kit |
| 2 | 85.790.001 | Inlet Valve |
| 3 | 85.790.002 | Inlet Valve Viton O-Ring |
| 4 | 85.790.011 | Outlet Shaft |

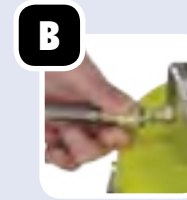
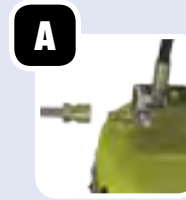
RECOMMENDED APPLICATIONS

1) Connect/Reconnect M22 Hose

Before use with gun, lance, or longwand ensure that the M22 is connected properly.



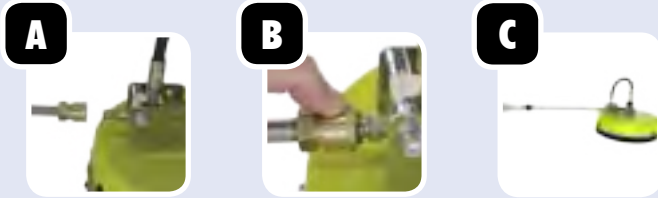
2) Use with a gun and lance.



Connect to lance using q/c fittings on the lance and whirl-a-way. Ensure the M22 hose is connected properly before use.

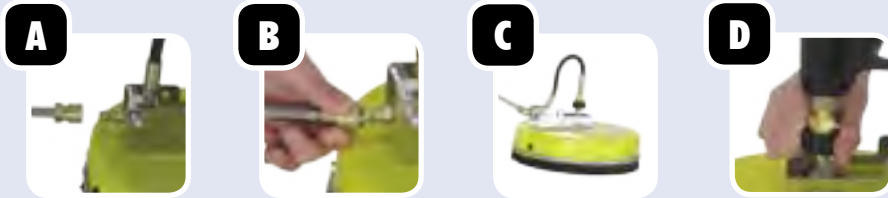
RECOMMENDED APPLICATIONS

3) Attach to longwand



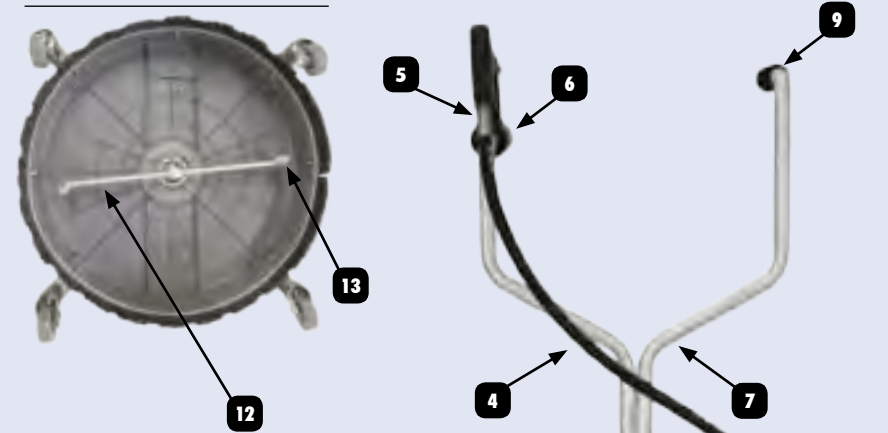
Attach to a longwand for cleaning hard to reach surfaces. Connect to longwand using the QC fittings on the longwand and Whirl-A-Way. Ensure the M22 hose is connected properly before use.

4) Use with a spray gun kit (optional kit #85.400.066)



The 12" Whirl-A-Way is equipped for use with an optional spray gun kit P/N#85.400.066). Disconnect the M22 hose, then assemble the handle and spray gun as outlined.

BE-2200WAWG

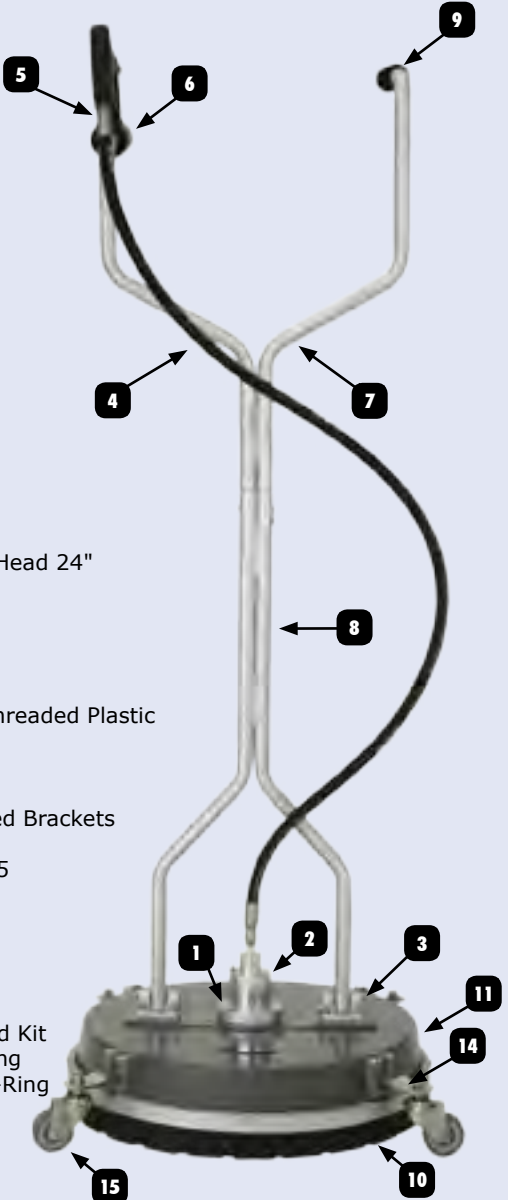


PARTS LIST

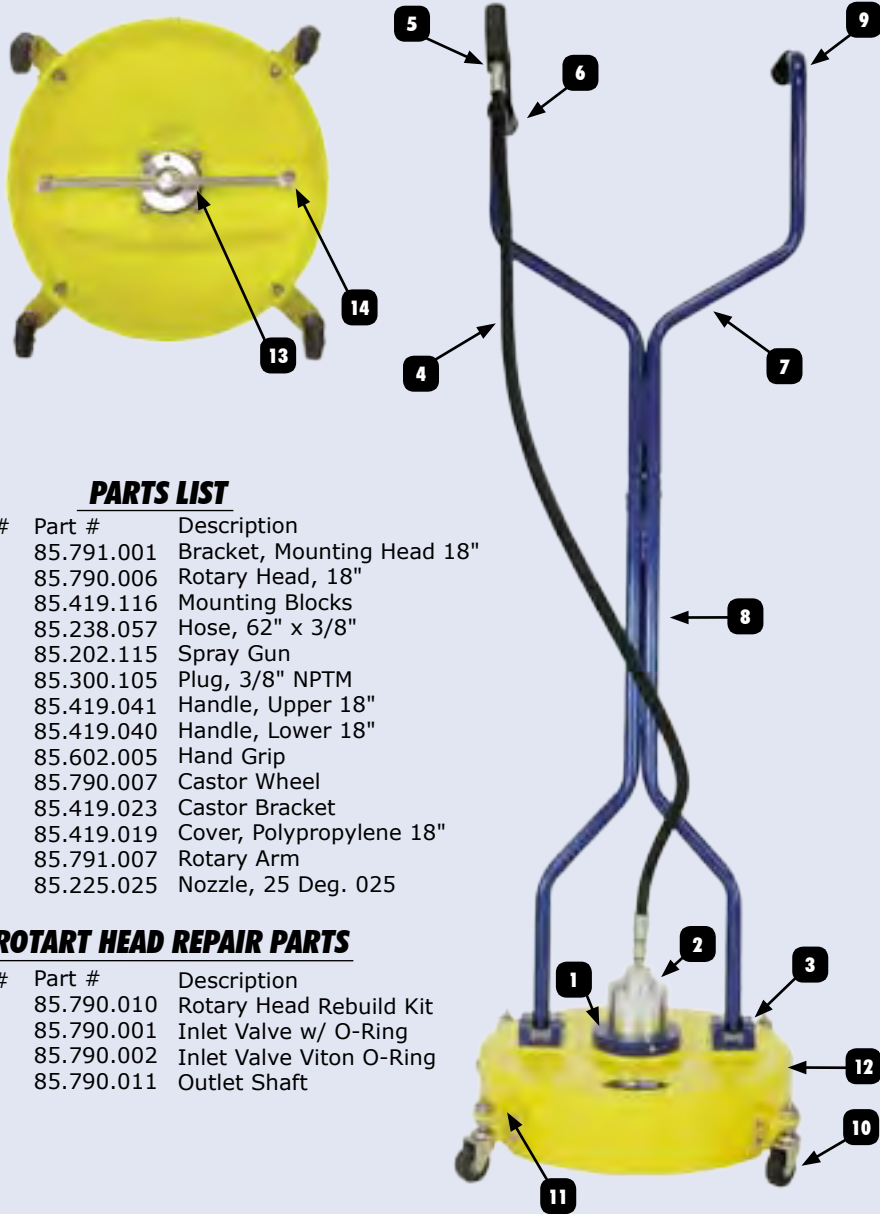
| No# | Part # | Description |
|-----|------------|----------------------------------|
| 1 | 85.791.002 | Bracket, Mounting Head 24" |
| 2 | 85.790.004 | Rotary Head, 20" |
| 3 | 85.419.119 | Mounting Block |
| 4 | 85.238.057 | Hose, 62" x 3/8" |
| 5 | 85.202.116 | Spray Gun |
| 6 | 85.300.105 | Plug, 3/8" MNPT |
| 7 | 85.419.038 | Upper Handle w/ Threaded Plastic |
| 8 | 85.419.039 | Lower Handle |
| 9 | 85.602.005 | Hand Grip |
| 10 | 85.790.026 | Nylon Brush |
| 11 | 85.419.013 | 22" Cover w/ Molded Brackets |
| 12 | 85.791.029 | Rotary Arm for 22" |
| 13 | 85.225.025 | Nozzle, 25 Deg. 025 |
| 14 | 85.419.045 | Castor Bracket |
| 15 | 85.790.009 | Castor |

ROTARY HEAD REPAIR PARTS

| No# | Part # | Description |
|-----|------------|--------------------------|
| 1 | 85.790.010 | Rotary Head Rebuild Kit |
| 2 | 85.790.001 | Inlet Valve w/ O-Ring |
| 3 | 85.790.002 | Inlet Valve Viton O-Ring |
| 4 | 85.790.011 | Outlet Shaft |



BE-1800WAW



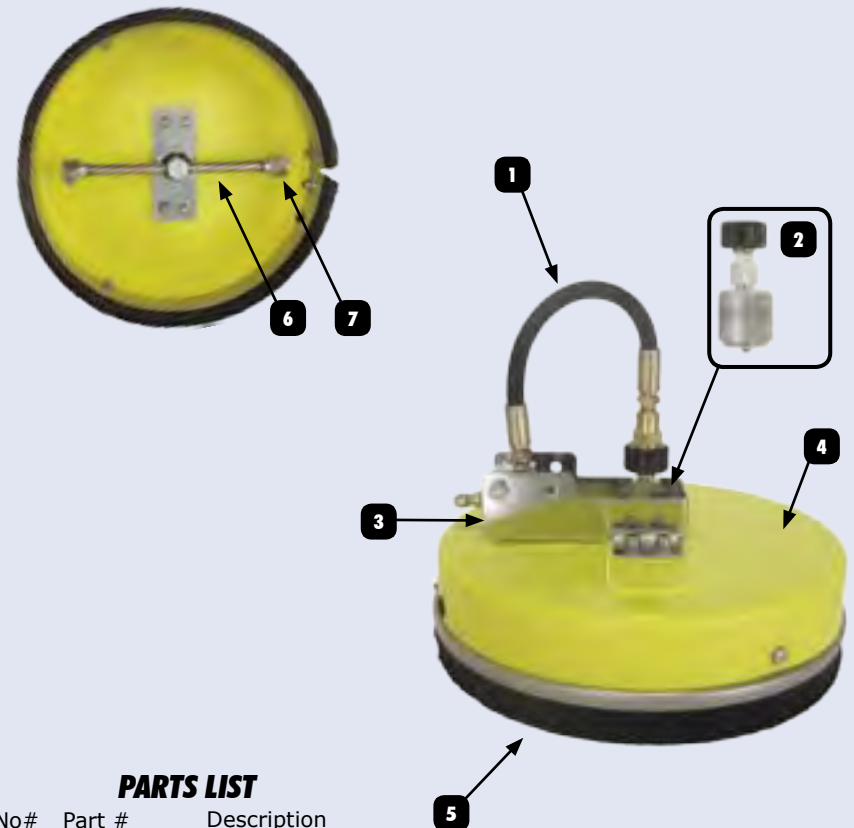
PARTS LIST

| No# | Part # | Description |
|-----|------------|----------------------------|
| 1 | 85.791.001 | Bracket, Mounting Head 18" |
| 2 | 85.790.006 | Rotary Head, 18" |
| 3 | 85.419.116 | Mounting Blocks |
| 4 | 85.238.057 | Hose, 62" x 3/8" |
| 5 | 85.202.115 | Spray Gun |
| 6 | 85.300.105 | Plug, 3/8" NPTM |
| 7 | 85.419.041 | Handle, Upper 18" |
| 8 | 85.419.040 | Handle, Lower 18" |
| 9 | 85.602.005 | Hand Grip |
| 10 | 85.790.007 | Castor Wheel |
| 11 | 85.419.023 | Castor Bracket |
| 12 | 85.419.019 | Cover, Polypropylene 18" |
| 13 | 85.791.007 | Rotary Arm |
| 14 | 85.225.025 | Nozzle, 25 Deg. 025 |

ROTART HEAD REPAIR PARTS

| No# | Part # | Description |
|-----|------------|--------------------------|
| 1 | 85.790.010 | Rotary Head Rebuild Kit |
| 2 | 85.790.001 | Inlet Valve w/ O-Ring |
| 3 | 85.790.002 | Inlet Valve Viton O-Ring |
| 4 | 85.790.011 | Outlet Shaft |

BE-1200WAW



PARTS LIST

| No# | Part # | Description |
|-----|------------|-------------------------------|
| 1 | 85.214.012 | Hose, 12" x 1/4" |
| 2 | 85.790.021 | Rotary Head, 12" |
| 3 | 85.791.015 | Mounting Bracket |
| 4 | 85.419.012 | Cover, ABS Nylon Material 12" |
| 5 | 85.790.024 | Nylon Brush Skirt, 12" |
| 6 | 85.791.016 | Rotary Arm |
| 7 | 85.215.020 | Nozzle, 15 Deg. 020 |

ROTART HEAD REPAIR PARTS

| No# | Part # | Description |
|-----|------------|------------------------------|
| 1 | 85.790.023 | Viton O-ring for Rotary Head |
| 2 | 85.790.022 | Rotary Head Repair Kit |

BE-1600WAW

| No# | Part # | Description |
|-----|------------|----------------------------------|
| 1 | 85.791.003 | Bracket, Mounting Head 16" & 20" |
| 2 | 85.790.004 | Rotary Head, 16" |
| 3 | 85.419.116 | Mounting Blocks |
| 4 | 85.238.057 | Hose, 62" x 3/8" |
| 5 | 85.202.017 | Spray Gun |
| 6 | 85.300.105 | Plug, 3/8" MNPT |
| 7 | 85.419.044 | Handle, Upper 16" |
| 8 | 85.419.042 | Handle, Lower 16" |
| 9 | 85.602.005 | Hand Grip |
| 10 | 85.790.012 | Brush Skirt, 16" |
| 11 | 85.419.021 | Cover, Polypropylene 16" |
| 12 | 85.791.009 | Rotary Arm, For 16" |
| 13 | 85.225.025 | Nozzle, 25 Deg. 025 |

BE-2000WAWY

| No# | Part # | Description |
|-----|-------------|----------------------------------|
| 1 | 85.791.003 | Bracket, Mounting Head 16" & 20" |
| 2 | 85.790.004 | Rotary Head, 20" |
| 3 | 85.419.116 | Mounting Blocks |
| 4 | 85.238.057 | Hose, 62" x 3/8" |
| 5 | 85.202.115 | Spray Gun |
| 6 | 85.300.105 | Plug, 3/8" MNPT |
| 7 | 85.419.033 | Handle, Upper 20" |
| 8 | 85.419.032 | Handle, Lower 20" |
| 9 | 85.602.005 | Hand Grip |
| 10 | 85.790.013 | Brush Skirt, 20" |
| 11 | 85.419.020Y | Cover, Polypropylene 20" |
| 12 | 85.791.013 | Rotary Arm, 20" |
| 13 | 85.225.025 | Nozzle, 25 Deg. 025 |

ROTARY HEAD REPAIR PARTS

| No# | Part # | Description |
|-----|------------|--------------------------|
| 1 | 85.790.010 | Rotary Head Rebuild Kit |
| 2 | 85.790.001 | Inlet Valve w/ O-Ring |
| 3 | 85.790.002 | Inlet Valve Viton O-Ring |
| 4 | 85.790.011 | Outlet Shaft |

BE-1600WAW

BE-2000WAWY

