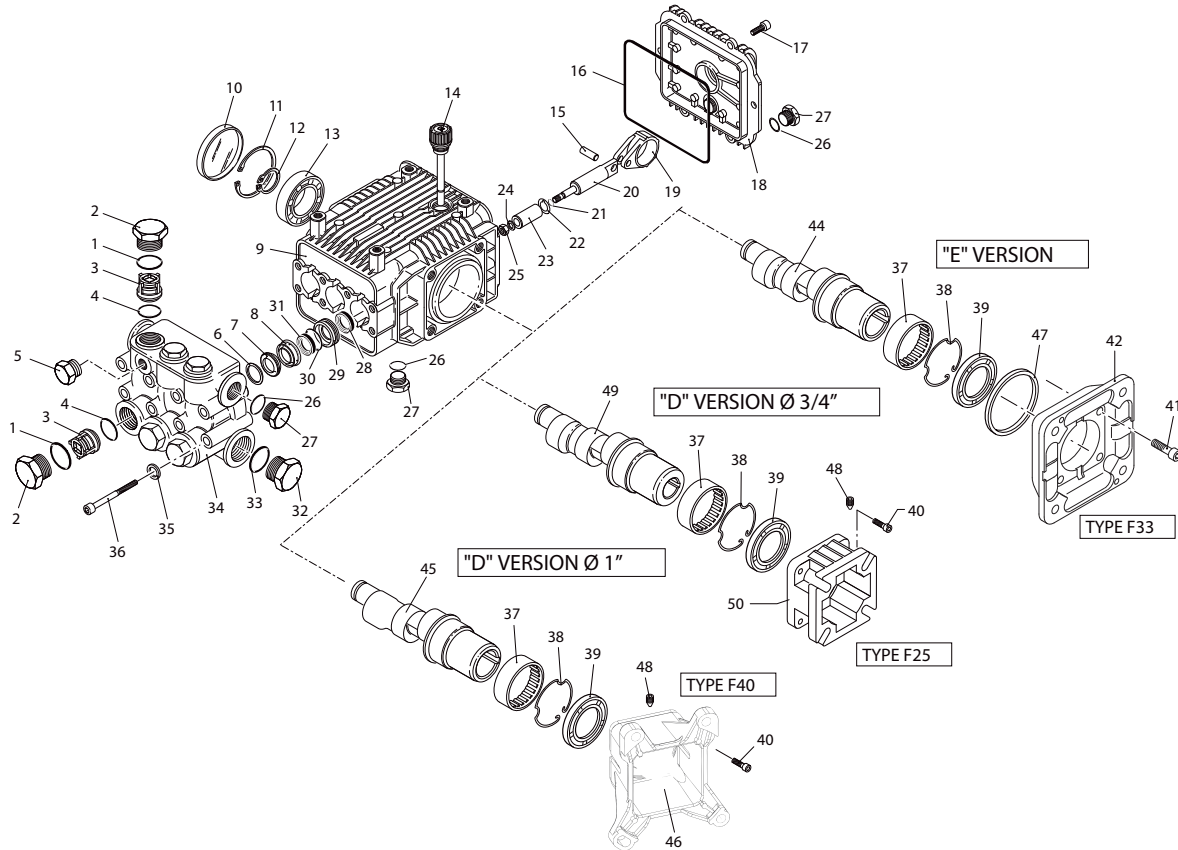
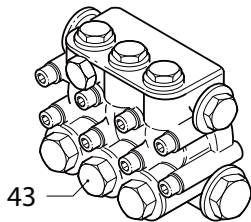


# A.R. NORTH AMERICA XMV 3400 RPM



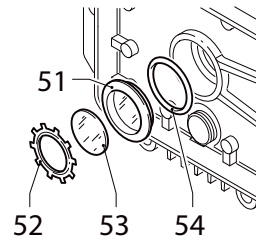
38 - 1

**Complete Pump Head**



38 - 2

**Rear Cover Oil Sight Glass**



38 - 3

# XMV 3400 RPM PARTS/KITS

Commercial Pumps

Pos	Code	Description	Qty	Note
1	960160	O-Ring	Ø 17.86x2.62	6
2	1269657	Valve Cap	w/0-ring, Forged (442 in/lbs)	6
3	1269050	Complete Valve		6
4	880830	O-Ring	Ø 15.54x2.62	6
5	620301	Plug	1/8" G	1
6	1780130	Support Ring	15mm	3
7	1260130	High Pressure Seal		3
8	1780090	Front Piston Guide		3
9	1780010	Pump Body		1
10	1266740	Bearing Cap		1
11	1260790	Retainer Ring	Ø i52	1
12	1780550	Retainer Ring		1
13	1780490	Bearing		1
14	880130	Oil Cap (Vented Dipstick)		1
15	1780050	Connecting Rod Pin		3
16	1780510	O-Ring		1
17	1200430	Bolt	M6x16 (89 in/lbs)	6
18	1789010	Rear Cover		1
19	1780040	Connecting Rod		3
20	1780060	Piston Rod		3
21	480480	O-Ring	Ø 4.48x1.78	3
22	1260091	Washer	(slinger)	3
23	1780070	Piston		3
24	1260100	Washer		3
25	1260110	Nut	M8 (106 in/lbs)	3
26	740290	O-Ring	Ø 14x1.78	3
27	1989600	Plug	3/8" G	3
28	1260460	Oil Seal		3
29	1780100	Rear Piston Guide		3
30	770260	O-Ring	Ø 23.52x1.78	3
31	1260440	Low Pressure Seal		3
32	820361	Plug	1/2" G - Brass	1
33	180101	O-Ring	Ø 17.5x2	1
34	1780380	Blank Head		1
35	1381550	Lock Washer		8
36	1322730	Head Bolt	M6x60 (133 in/lbs)	8
37	1321190	Bearing		1
38	1321080	Retainer Ring		1
39	480671	Shaft Oil Seal		1
40	180030	Bolt	M8x20	4
41	620610	Bolt	M8x30	4
42	1780910	F33 Flange	Electric Motor	1
43	1789200	Complete Pump Head		1
44	1780860	Hollow Shaft	Ø 5/8"	1
	1780340	Hollow Shaft	Ø 1", 9 ID Stamp	1
45	1780920	Hollow Shaft	Ø 1", 8 ID Stamp	1
	1780330	Hollow Shaft	Ø 1", 7 ID Stamp	1
46	2760290	F40 Flange	Gas Engine	1
47	1780430	Bushing		1

Pos	Code	Description	Qty	Note
48	820440	Set Screw	1	
	1780590	Hollow Shaft	Ø 3/4", 9 ID Stamp	1
49	1780930	Hollow Shaft	Ø 3/4", 8 ID Stamp	1
	1780620	Hollow Shaft	Ø 3/4"	1
50	1780580	F25 Flange	Gas Engine	1
51	1260250	Oil Sight Glass		1
52	1260430	Retainer Ring		1
53	1780690	Sight Glass Diffuser		1
54	1140450	O-Ring	Ø 20.24x2.62	1

AR64516 Oil (16 oz) - Capacity 14.5 oz, QTY 1  
Pumps are Prefilled with Oil from the Factory.  
Change oil every 3-5 months or every 500 hours of operation.  
Tightening torque (Tolerance + 0 ÷ -10%)

OPTIONAL PARTS/KITS				
Pos	Code	Description	Qty	Note
	2776	Viton Water Seals Kit	Ø 15	1
	2817	Water Seal Kit for up to 180°F	Ø 15 High Temp	1
	42212	Water Seal Kit for up to 180°F	Ø 15 High Temp (Teflon)	1
2	1260162T	Tapped Valve Cap	1/4" threaded (442 in/lbs)	1
	2740	Support Ring Kit		1

LEGEND				
Symbol	Material	Description		
∇	-	XMV2G10, XMV2G15, XMV2G22, XMV2G25	Ø 15	
○	-	XMV3G25, XMV3G2, XMV3G30, XMV3G32	Ø 15	
●	-	XMV3.5G30	Ø 15	
□	-	XMV3.5G22, XMV3.5G25	Ø 15	
■	-	XMV4G20, XMV4G22, XMV4G25, XMV4G30, XMV4G32	Ø 15	
⊠	-	XMV2.5G26	Ø 15	

Valve Kit 1864	
Pos.	Qty
3	6
4	6

Piston Kit 2544	
Pos.	Qty
21	3
22	3
23	3
24	3
25	3

Water Seal Kit 2741	
Pos.	Qty
7	3
30	3
31	3

Oil Seal Kit 2787	
Pos.	Qty
10	1
16	1
28	3
39	1

**COUNTRY OF ORIGIN: ITALY**  
LAST UPDATED: APRIL 2023