



SPECIFICATIONS



Part Number	DCFSCS22Z
Operating Pressure	1,000 - 5,000 PSI
Max Flow	8.0 GPM
Dimensions	70"x23"x23"
Weight	24.5 lbs

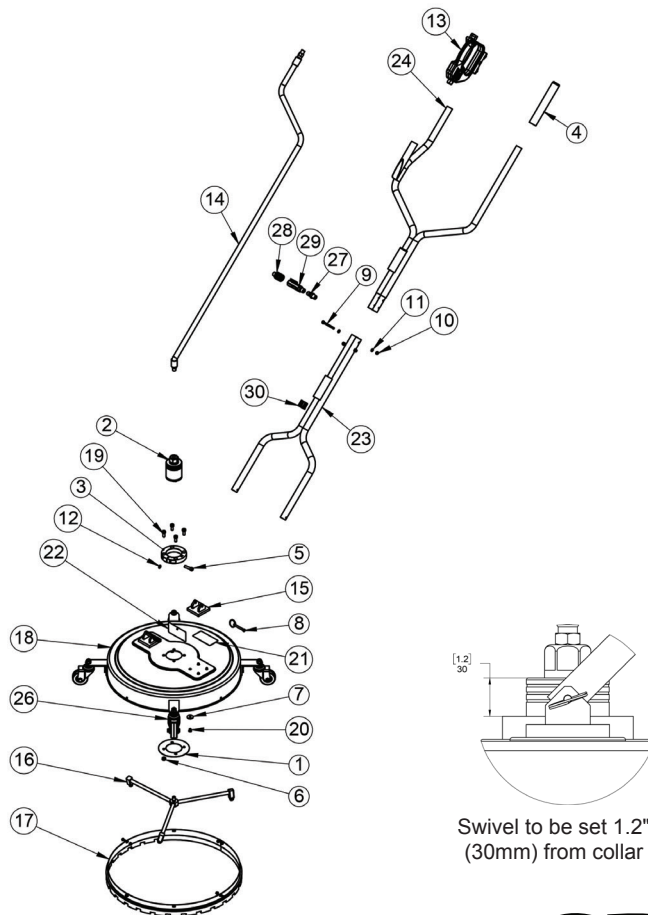
FEATURES / BENEFITS

- Compensating Gun Feature
- Full 22" cleaning path
- Heavy-duty anodized aluminum components
- Stainless steel cover, handle, & casters
- Three nozzle rotating arms

WARNING: Read Before Operating Machine
 Always wear protective eye wear
 Keep clear of rotating nozzles
 Never lock trigger gun open with any device
 Drain water in cold weather to avoid freezing
 Tampering with any part of this machine will void all warranties

PARTS LIST

NO.	PART NO.	DESCRIPTION	QTY.
1	2630010	Plate, Retaining	1
2	2103226	Swivel	1
3	2500017	Collar, Split	1
4	2660047	Grip, Handle	1
5	2200055	SHCS, M8 x 30	1
6	2200053	Nut, M8 x 1.25	4
7	2203406	Washer, M6	8
8	2202010	Pin, 55 mm, W/Ring, SS	2
9	2200058	HHCS, M6 x 60	2
10	2200026	Nut, Nylok, M6	2
11	2200018	Washer, M6	4
12	2203507	Washer	1
13	DCG5000FSC	Gun, FSC	1
14	2702000	Hose, FSC	1
15	2500016	Block, Handle	2
16	2103224	Arm, Rotary, FSC	1
17	2103223	Assy, Brush	1
18	2540070	Deck, FSC, SST	1
19	2200093	SHCS	4
20	2200094	Bolt, M6	8
21	2400007	Label, Grease	1
22	2400013	Label, Swivel	1
23	2550161	Handle, Lower	1
24	2550160	Handle, FSC, Upper	1
25	2660224	Plug, Handle	1
26	2103228	Caster Kit, SS	1
27	D10079	Plug, 3/8" x 3/8"-M	1
28	D10075	Coupler, 3/8" x 3/8"-M	1
29	D40015	Filter, In-line, SST	1
30	2660297	Grommet, FSC Handle	2



General Pump is a member of the Interpump Group



Ref 310162 Rev D
06-20



REPAIR KITS

Rotary Head Kit - Major:

P/N 2100372

Includes items 2, 3, 4, 5, 6, 7, 8, 9, 10, 11, 12, 13, 14, 15 and 17

Complete Rotary Head Kit:

P/N 2103226

Includes all items

Rotary Head Kit - Minor:

P/N 2100203

Includes items 8, 9, 11, and 13

Replacement Nozzles

for arm 2103224:

P/N 925020M (3 required)

NO.	PART NO.	DESCRIPTION	QTY.
1	2500014	Housing	1
2	2520030	Retainer, Bearing	1
3	2520028	Retainer, Bearing	1
4	2520027	Spacer, Bearing	2
5	2640004	Bearing	2
6	2701012	O-ring	1
7	2701011	O-ring	1
8	2701010	O-ring	1
9	2720007	Spring	1
10	2530008	Pin	2
11	2530007	Stem, Small	1
12	2520029	Snap Ring	3
13	2710000	Back-up Ring	1
14	2520113	Stem	1
15	2200092	Screw, M5 x 16	3
16	2200050	Washer	3
17	2500018	Retainer, Bearing	1
18	2640012	Zerk, Grease	1

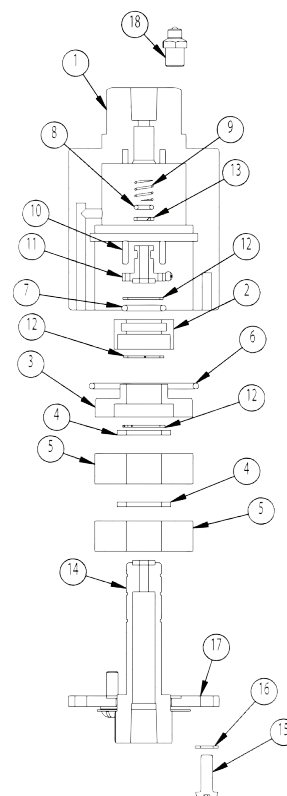


Photo of Rotary Head - Major as assembled.

ASSEMBLY / OPERATING INSTRUCTIONS

1. Connect inlet filter to FSC gun inlet.
2. Connect to Pressure Washer.
3. Turn water on and open valve. Open trigger gun for flow of water through nozzles. Nozzles must have flowing spray. If not, remove tips and clean; reassemble, making sure that groove of nozzle is parallel to spray bar. Use thread sealant when installing nozzles.
4. Start Pressure Washer. The Hammerhead is ready for operation.
5. Walk slowly behind the Hammerhead cleaning as you go. If striping occurs, slow down your pace.
6. Periodically check weep hole on bottom of swivel. Water will seep slowly; if water shoots out, stop and replace seals. Swivel assembly can be rebuilt.
7. For maximum effectiveness keep spray tips clean. If the machine vibrates, stop and clean spray tips.
8. Grease the swivel with one or two grease gun pumps every 200 hours (or once about every 30 days of use).

NOTE: After 50 hours of use, remove the inlet filter, take apart and clean filter screen.

DO NOT ALLOW MACHINE TO REMAIN STATIONARY ON SOFT SURFACES SUCH AS WOOD.

Caution: Striking any raised obstacle during operation will damage machine. If contact does occur and results in vibration when operating machine, STOP and replace spray bar. Continued operation could result in serious injury or damage to machine.

STORAGE NOTE

When storing the FSC for a few weeks or months, it is best to drain as much water as possible. Disconnect the FSC from the pump and stand the handle up. Clamp the gun trigger open and let the water run out. Shop air can also be used at the gun inlet to force out the water.