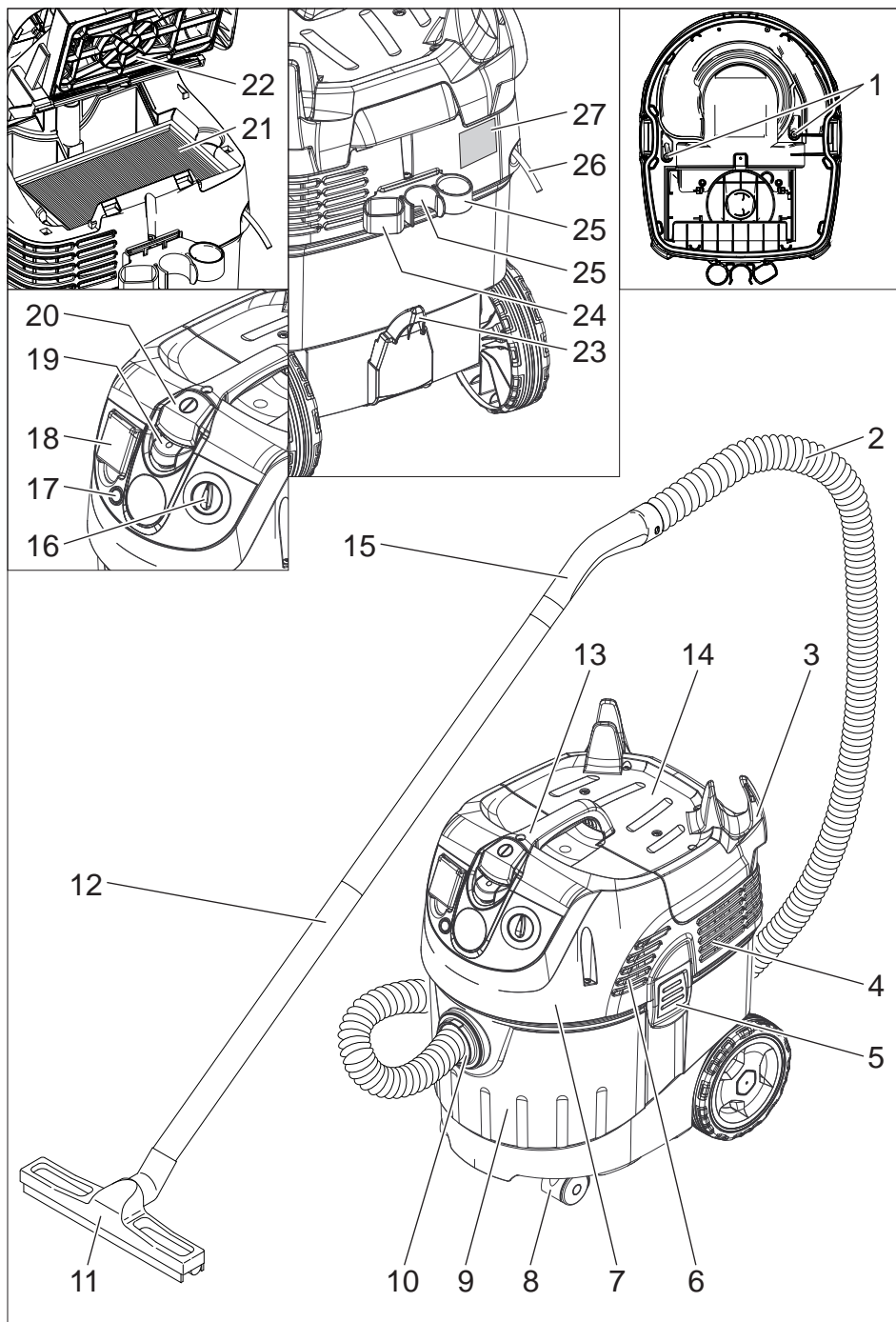
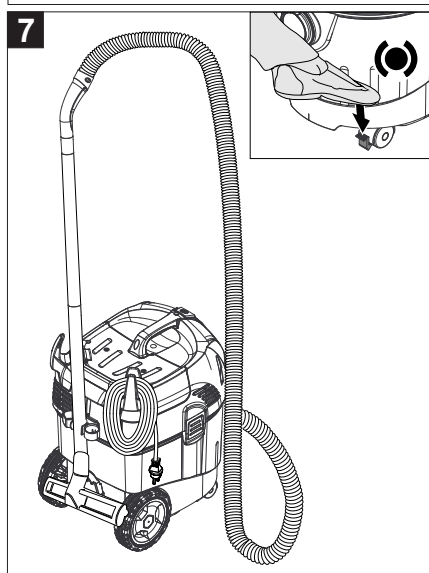
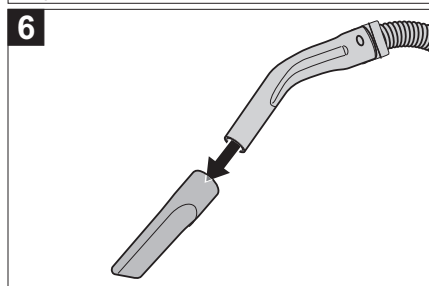
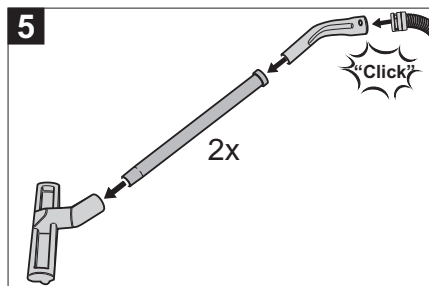
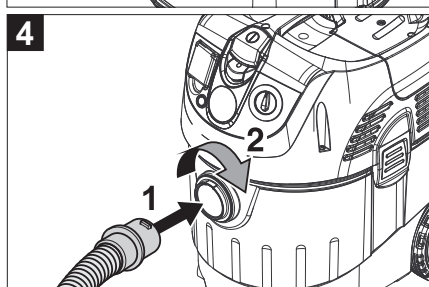
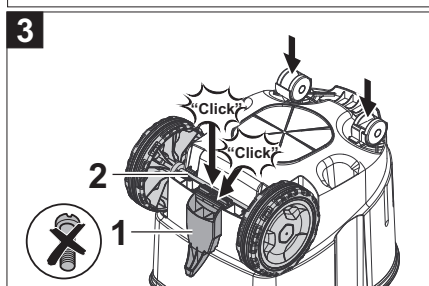
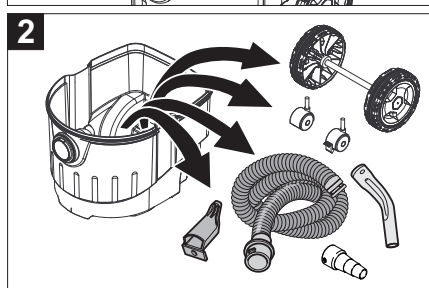
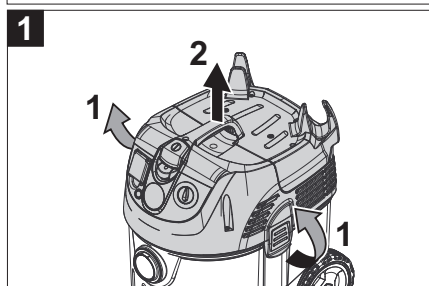
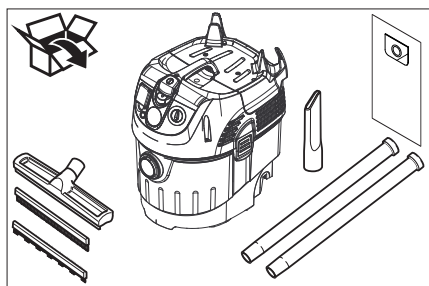
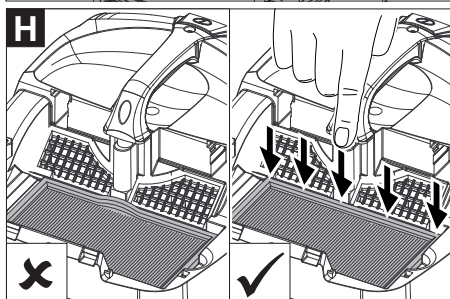
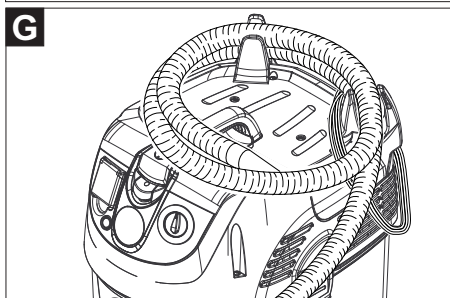
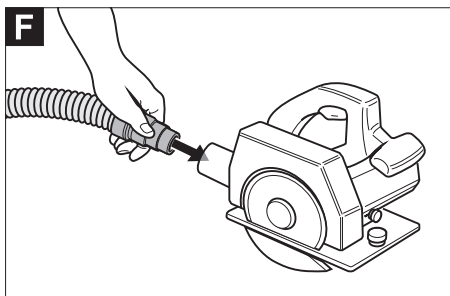
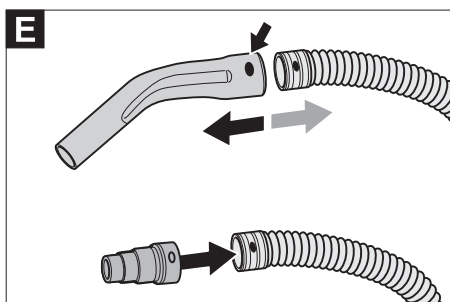
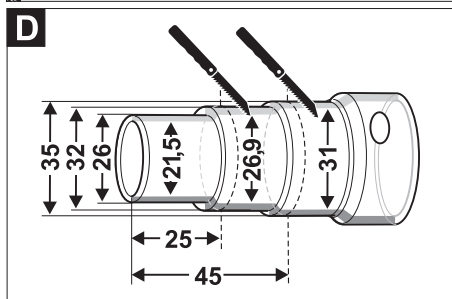
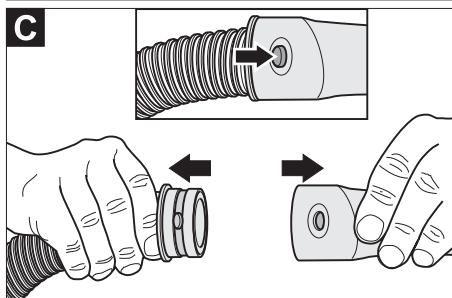
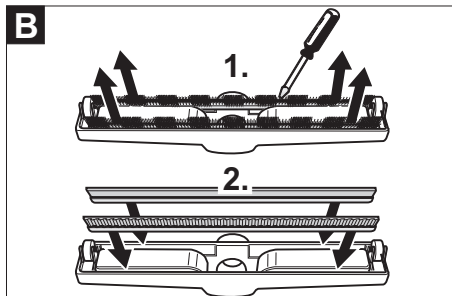
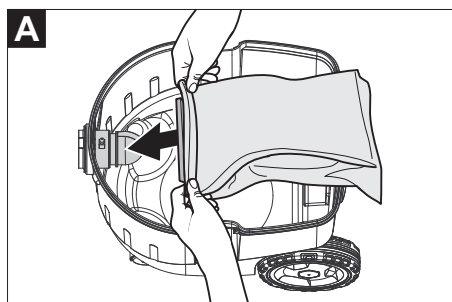


  
**Register and win!**  
[www.karcher.com/register-and-win](http://www.karcher.com/register-and-win)









## IMPORTANT SAFETY INSTRUCTIONS

### READ ALL INSTRUCTIONS BEFORE USING THIS MACHINE

- Inform your dealer immediately if there is any shipping damage.
- Completely remove the accessories from the box.
- The suction unit is not suitable for sucking up hazardous dusts as asbestos. Please consult your Kärcher branch or your Kärcher dealer with regard to such applications.
- Only operate the vacuum from a grounded outlet. Refer to the Technical data for the necessary main fuse.
- Connect to a properly grounded outlet only. See Grounding Instructions.

When using an electrical machine, basic precautions should always be followed, including the following: This vacuum is intended for commercial use.

- 1 DISCONNECT VACUUM CLEANER FROM POWER CIRCUIT before removing the cover, performing maintenance work, and when not in use.
- 2 DO NOT LEAVE the machine unattended when plugged in.
- 3 ALWAYS CHECK THE POWER SUPPLY CORD for damage or signs of any aging before each use.
- 4 DO NOT PULL OR CARRY VACUUM CLEANER BY CORD. Do not close door on cord or pull cord around sharp edges.
- 5 KEEP CORD AWAY FROM HEAT AND OIL. Do not leave cord lying around after job is complete. It can become a tripping hazard.
- 6 DO NOT RUN VACUUM OVER CORD.
- 7 TURN SWITCH TO OFF before unplugging power supply cord.
- 8 DO NOT UNPLUG BY PULLING CORD. To unplug, grasp plug, not cord.
- 9 DO NOT GRASP PLUG WITH WET HANDS.

- 10 A DAMAGED CORD OR PLUG should only be replaced by an authorized service center representative. DO NOT ATTEMPT TO REPAIR POWER CORD.
- 11 TO AVOID SHOCK, do not expose to rain. Store indoors.
- 12 USE ONLY AS RECOMMENDED BY THIS MANUAL. Use only with recommended attachments.
- 13 KEEP HAIR, CLOTHING, LOOSE JEWELRY, FINGERS and all parts of the body away from openings and moving parts.
- 14 DO NOT BLOCK OR OBSTRUCT OPENINGS. Keep openings free of lint, hair, dust, and anything that restricts air flow.
- 15 DO NOT PICK UP ANYTHING THAT IS BURNING, smoldering, or smoking such as matches, cigarettes, or hot ashes.
- 16 DO NOT USE TO VACUUM COMBUSTIBLE EXPLOSIVE MATERIALS, such as coal, grain, and other finely divided combustible material.
- 17 DO NOT USE TO VACUUM COMBUSTIBLE, hazardous, toxic, or carcinogenic materials, including gasoline, diesel fuel, acetone, paint thinner, heating oils, undiluted acids and solvents, pesticide, and asbestos.
- 18 USE RECOMMENDED FILTERS when vacuuming drywall materials.
- 19 DO NOT USE WITHOUT FILTER and/or dust bag in proper place.
- 20 CONNECT VACUUM CLEANER WITH PROPERLY GROUNDED OUTLET ONLY. See grounding instructions.
- 21 DO NOT ALLOW VACUUM CLEANER TO BE USED AS A TOY. Keep children away from Vacuum Cleaner.
- 22 DO NOT LEAVE UNATTENDED while Vacuum Cleaner is running.

- 23 DO NOT USE IF CORD, PLUG, FILTER, OR VACUUM CLEANER IS IN POOR CONDITION. If the Vacuum Cleaner has been dropped, damaged, exposed to weather, or dropped into water; have it checked by an authorized service.
- 24 ALWAYS USE EYE PROTECTION when operating Vacuum Cleaner.
- 25 USE EXTRA CAUTION when operating on stairs.
- 26 STAY ALERT! Do not use Vacuum Cleaner when you are tired or under the influence of drugs, alcohol or medication.
- 27 Kärcher HEPA filters must be used when using this vacuum for EPA Lead Based Paint Renovation, Repair and Painting Program (RRP), where lead may be present. Not using Kärcher HEPA filters for EPA RRP program may cause health and environmental hazards.
- 28 Not suitable to vacuum hazardous or toxic substances or dusts e.g. asbestos. Neither the standard filter or the optional HEPA filter is able to capture all hazardous particles and may cause health hazards.

## **SAVE THESE INSTRUCTIONS**

**This vacuum is intended for commercial use.**

## **SAFETY INSTRUCTIONS**

### **GROUNDING INSTRUCTIONS**

- This appliance must be grounded. If it should malfunction or break down, grounding provides a path of least resistance for electric current to reduce the risk of electric shock.
- This appliance is equipped with a cord having an equipment grounding conductor and ground plug.
- The plug must be inserted into an appropriate outlet that is properly installed and grounded in accordance with all local codes and ordinances.

### **WARNING:**

- Improper connection of the equipment-grounding conductor can result in a risk of electric shock.
- Check with a qualified electrician or service person if you are in doubt as to whether the outlet is properly grounded.
- Do not modify the plug provided with the appliance.
- If it will not fit the outlet, have a proper outlet installed by a qualified electrician.
- This appliance is for use on a nominal 120-volt circuit, and has a grounded plug that looks like the plug illustrated in Fig.A.
- A temporary adapter that looks like the adapter illustrated in Fig.B, may be used to connect this plug to a two-pole receptacle as shown in Fig.B, if a properly grounded outlet is not available.
- The temporary adapter should be used only until a properly grounded outlet (Fig.A) is installed by a qualified electrician.
- The green colored rigid ear, lug, or the like extending from the adapter must be connected to a permanent ground such as a properly grounded outlet box cover.
- Whenever the adapter is used, it must be held in place by a metal screw.

**IN ALL CASES, MAKE SURE THE RECEPTACLE IN QUESTION IS PROPERLY GROUNDED.**

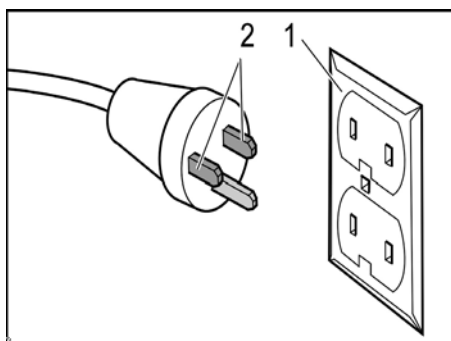
## NEVER REMOVE GROUNDING PRONG FROM POWER PLUG.

### EXTENSION CORDS

Use only three-wire extension cords that have three-prong grounding-type plugs and three-pole receptacle that accepts the appliance's plug. Replace damaged or worn cord immediately.

### DO NOT ATTEMPT TO REPAIR POWER CORD.

Figure A

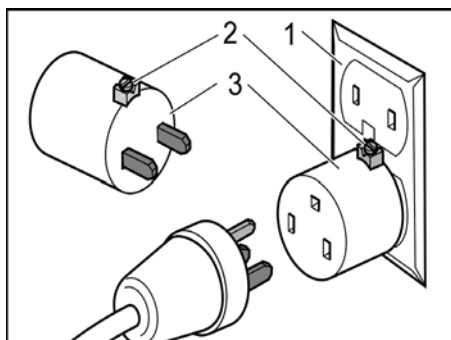


1 Grounded outlet box

2 Current carrying prongs

Grounding prong is longest of the 3 prongs

Figure B



1 Grounded outlet box

2 Grounding means

3 Adapter

Note: In Canada, the use of a temporary adapter is not permitted by the Canadian Electrical Code.

### Servicing of double-insulated machines

In a double-insulated machine, two systems of insulation are provided instead of grounding. No grounding means is provided on a double-insulated machine, nor should a means for grounding be added to the machine. Servicing a double-insulated machine requires extreme care and knowledge of the system, and should be done only by qualified service personnel. Replacement parts for a double-insulated machine must be identical to the parts they replace.



Please read and comply with these original instructions prior to the initial operation of your appliance and store them for later use or subsequent owners.

- The non-compliance of the operating and safety instructions may lead to damages of the appliance and to dangers for the operator and other persons.
- In case of transport damage inform vendor immediately

## Contents

Environmental protection . . . .	EN	1
Danger or hazard levels . . . . .	EN	1
Proper use . . . . .	EN	1
Device elements . . . . .	EN	2
Start up . . . . .	EN	2
Operation . . . . .	EN	3
Transport . . . . .	EN	4
Storage . . . . .	EN	4
Care and maintenance . . . . .	EN	4
Troubleshooting . . . . .	EN	4
Warranty . . . . .	EN	5
Accessories and Spare Parts .	EN	5
Technical specifications . . . . .	EN	6

## Environmental protection



The packaging material can be recycled. Please do not throw the packaging material into household waste; please send it for recycling.



Old appliances contain valuable materials that can be recycled; these should be sent for recycling. Batteries, oil, and similar substances must not enter the environment. Please dispose of your old appliances using appropriate collection systems.

### Notes about the ingredients (REACH)

You will find current information about the ingredients at:

**[www.kaercher.com/REACH](http://www.kaercher.com/REACH)**

## Danger or hazard levels

### **DANGER**

*Immediate danger that can cause severe injury or even death.*

### **WARNING**

*Possible hazardous situation that could lead to severe injury or even death.*

### **CAUTION**

*Pointer to a possibly dangerous situation, which can lead to minor injuries.*

### **ATTENTION**

*Pointer to a possibly dangerous situation, which can lead to property damage.*

## Proper use

### **WARNING**

*The appliance is not suitable for vacuuming dust which endangers health.*

- The machine is meant for dry and wet cleaning of floors and walls.
- This appliance is suited for the commercial use, e.g. in hotels, schools, hospitals, factories, shops, offices, and rental companies.



## Device elements

- 1 Electrodes
- 2 Suction hose
- 3 Cable hook
- 4 Air outlet, working air
- 5 Suction head lock
- 6 Air inlet, motor cooling air
- 7 Suction head
- 8 Steering roller
- 9 Dirt receptacle
- 10 Suction support
- 11 Floor nozzle
- 12 Suction tube
- 13 Carrying handle
- 14 Filter cover
- 15 Bender
- 16 Rotary switch for suction output (min-max)
- 17 Indicator lamp
- 18 Socket
- 19 Automatic filter dedusting
- 20 Main switch
- 21 Flat fold filter
- 22 Filter dedusting
- 23 Floor nozzle holder
- 24 Holder for crevice nozzle
- 25 Holder for suction pipes
- 26 Power cord
- 27 Nameplate

## Start up

### **⚠ WARNING**

*Once this vacuum is used for EPA Lead Based Paint Renovation, Repair and Painting Program (RRP) where lead may be present, it is recommended that it always be used for RRP. Residual hazardous substances in the vacuum may cause health and environmental hazards.*

### **⚠ WARNING**

*When using this vacuum for EPA Lead Based Paint Renovation, Repair and Painting Program (RRP), this vacuum is not recommended for vacuuming carpets and rugs. Vacuum may not be able to completely remove all hazardous substance may cause health and environmental hazards.*

### **⚠ WARNING**

*Not suitable to vacuum hazardous or toxic substances or dusts e.g. asbestos. Neither the standard filter or the optional HEPA filter is able to capture all hazardous particles and may cause health hazards.*

### **ATTENTION**

*The flat pleated filter must always be in place while vacuuming.*

## Anti-static system

Static charge is deflected by providing earthing to the connection nozzles. This prevents the formation of sparks and current shocks due to attachments (option) with electrical conductivity.

## Dry vacuum cleaning

- To vacuum up fine dust, a fleece filter bag or a membrane filter (special accessory) can additionally be used.

## Install fleece filter bag

Illustration **A**

- ➔ Release and remove the suction head.
- ➔ Install a fleece filter bag or a membrane filter (option).
- ➔ Insert and lock the suction head.

## Changeover from wet to dry vacuum cleaning

### **ATTENTION**

**Please note the following when switching from wet to dry vacuum cleaning:**

*If you vacuum dry dust while the filter element is still wet the filter will become obstructed and may be damaged beyond repair.*

- ➔ Dry the wet filter properly before use or replace it with a dry one.
- ➔ Change the filter, if required, according to instructions under the section "Maintenance and Care".

**Note:** For permanent wet vacuum cleaning it is advisable to use a PES flat pleated filter (see filter systems).

## Wet vacuum cleaning

### Inserting the rubber lips

Illustration **B**

- ➔ Remove the brush strips.
- ➔ Install the rubber lips.

**Note:** The structured side of the rubber lips must point outwards.

### Remove the fleece filter bag

- If the appliance is used to vacuum up wet dirt, the fleece filter bag or the membrane filter (special accessory) must always be removed.
- It is recommended to use a special filter bag (wet) (see Filter systems).

### General

- If wet dirt is vacuumed with the upholstery or crevice nozzle, or if water is sucked up from a container, it is recommended to deactivate the "automatic filter cleaning" function.
- If the maximum liquid level is reached the appliance will turn off automatically.
- **In case of non-conductive liquids (such as emulsion drilling fluids, oils, and greases) the appliance is not turned off when the container is full. The filling level must be continuously monitored and the container must be emptied in time.**
- After the wet vacuuming: Clean the flat folded filter with the filter cleaning. Clean the electrodes with a brush. Clean the container with a damp rag and dry it.

## Clip connection

Illustration **C**

The suction hose is equipped with a clip system. All C-35/C-DN-35 accessories can be connected.

## Operation

### Turning on the Appliance

- ➔ Plug in the mains plug.
- ➔ Switch on the appliance at the main switch.

### Adjust the suction output

- ➔ Set the suction output (min - max) at the rotary switch.

### Working with electrical power tools

#### **⚠ DANGER**

*Risk of injury and damage! The socket outlet is only for the connection of power tools to the vacuum cleaner. Any other use of the socket outlet is not permitted.*

- ➔ Connect the mains plug of the electric power tool to the vacuum cleaner.
- ➔ Switch on the appliance at the main switch.

Indicator lamp is on; vacuum cleaner is in the standby mode.

**Note:** The vacuum cleaner is turned on and off automatically with the electric power tool.

**Note:** The vacuum cleaner starts automatically within 0.5 seconds and continues to run for 15 seconds after the power tool has been switched off.

**Note:** Please refer to "Technical specifications" for the power connection specifications of the power tools.

Illustration **D**

- ➔ Adjust the tool adapter to fit the connection of the electric power tool.

Illustration **E**

- ➔ Remove the elbow from the suction hose.
- ➔ Attach the tool adapter to the suction hose.

Illustration **F**

- ➔ Connect the tool adapter to the electric power tool.

## Automatic filter cleaning

### ATTENTION

*Automatic filter cleaning must be turned off when using HEPA filter. The reversal of air during filter cleaning will damage the HEPA filter.*

The appliance has an innovative filter cleaning system that is particularly effective with fine dust. The flat pleated filter is automatically cleaned every 15 seconds through an air jet (pulsating sound).

**Note:** Automatic filter dedusting is switched on at the factory.

**Note:** The automatic filter dedusting function can only be switched on/ off when the appliance is switched on.

- To switch off automatic filter cleaning:
  - ➔ Activate the switch. Indicator lamp in the switch goes off.
- To switch on automatic filter cleaning:
  - ➔ Press the switch again. Indicator lamp in the switch glows green.

## Turn off the appliance

- ➔ Switch off the appliance at the main switch.
- ➔ Pull out the mains plug.

## After each operation

- ➔ Empty the container.
- ➔ Vacuum and wipe the appliance inside and outside with a damp cloth.

## Storing the Appliance

Illustration 

- ➔ Store the suction hose and the mains cable as shown in the illustration.
- ➔ Place the appliance in a dry room and secure it from unauthorized use.

## Transport

### ⚠ CAUTION

*Risk of injury and damage! Observe the weight of the appliance when you transport it.*

- ➔ Remove the suction pipe with the floor nozzle from the holder. Hold the appliance at the handle and at the suction pipe to transport it.
- ➔ When transporting in vehicles, secure the appliance according to the guidelines from slipping and tipping over.

## Storage

### ⚠ CAUTION

*Risk of injury and damage! Note the weight of the appliance in case of storage.*

This appliance must only be stored in interior rooms.

## Care and maintenance

### ⚠ DANGER

*First pull out the plug from the mains before carrying out any tasks on the machine.*

## Exchanging the flat pleated filter

- ➔ Open filter door.
- ➔ Replace the flat pleated filter.
- ➔ Close the filter door, it must lock into place.

## Cleaning the electrodes

- ➔ Release and remove the suction head.
- ➔ Clean the electrodes with a brush.
- ➔ Insert and lock the suction head.

## Troubleshooting

### ⚠ DANGER

*First pull out the plug from the mains before carrying out any tasks on the machine.*

## Suction turbine does not run

- ➔ Check the receptacle and the fuse of the power supply.
- ➔ Check the power cable, the power plug, the electrodes and the receptacle of the device.
- ➔ Turn on the appliance.

### **Suction turbine turns off**

- Empty the container.

### **Suction turbine does not start again after the container has been emptied**

- Turn off the appliance and wait for 5 seconds, turn it on again after 5 seconds.
- Clean the electrodes as well as the space between the electrodes with a brush.

### **Suction capacity decreases**

- Remove blockages in the suction nozzle, suction tube, suction hose, or flat pleated filter.
- Replace fleece filter bag.
- Ensure the filter cover properly locks into place.
- Clean or replace the membrane filter (special accessory) under running water.
- Replace the flat pleated filter.

### **Dust comes out while vacuuming**

Illustration 

- Check/correct the correct positioning of the flat fold filter.
- Replace the flat pleated filter.

### **Automatic shut-off (wet vacuum cleaning) does not react**

- Clean the electrodes as well as the space between the electrodes with a brush.
- Continuously check the filling level in case of non-conductive liquid.

### **Automatic filter cleaning is not working**

- Suction hose is not connected.

### **Automatic filter cleaning cannot be switched off**

- Inform Customer Service

### **Automatic filter cleaning cannot be switched on**

- Inform Customer Service

### **Customer Service**

**If malfunction can not be fixed, the device must be checked by customer service.**

### **Warranty**

The warranty terms published by the relevant sales company are applicable in each country. We will repair potential failures of your appliance within the warranty period free of charge, provided that such failure is caused by faulty material or defects in manufacturing. In the event of a warranty claim please contact your dealer or the nearest authorized Customer Service centre. Please submit the proof of purchase.

### **Accessories and Spare Parts**

- Only use accessories and spare parts which have been approved by the manufacturer. The exclusive use of original accessories and original spare parts ensures that the appliance can be operated safely and trouble free.
- At the end of the operating instructions you will find a selected list of spare parts that are often required.
- For additional information about spare parts, please go to the Service section at [www.kaercher.com](http://www.kaercher.com).

## Technical specifications

		NT 35/1 Tact Te
Mains voltage	V	120
Frequency	Hz	1~ 60
Rated current	A	15
Container capacity	gal (l)	9.0 (34)
Filling quantity (liquid)	gal (l)	5.0 (19)
Air volume (max.)	CFM (l/s)	123 (58)
Negative pressure (max.)	mm (kPa)	2250 (22.0)
Power connection data of the power tools	A	6
Type of protection	--	IPX4
Protective class	--	I
Suction hose connection (C-DN/C-ID)	in (mm)	1.38 (35)
Length x width x height	in (mm)	20.5 x 15.0 x 23.0 (520 x 380 x 580)
Typical operating weight	lbs (kg)	27.6 (12.5)
Max. ambient temperature	°F (°C)	104 (+40)
<b>Values determined to EN 60335-2-69</b>		
Sound pressure level $L_{pA}$	dB(A)	65
Uncertainty $K_{pA}$	dB(A)	1
<b>Power cord</b>	SJTW 3/14	
	Part no.:	Cable length
CUL	6.650-150.0	25 ft (7.5 m)