

KÄRCHER *KF Pump Series*

FEATURES

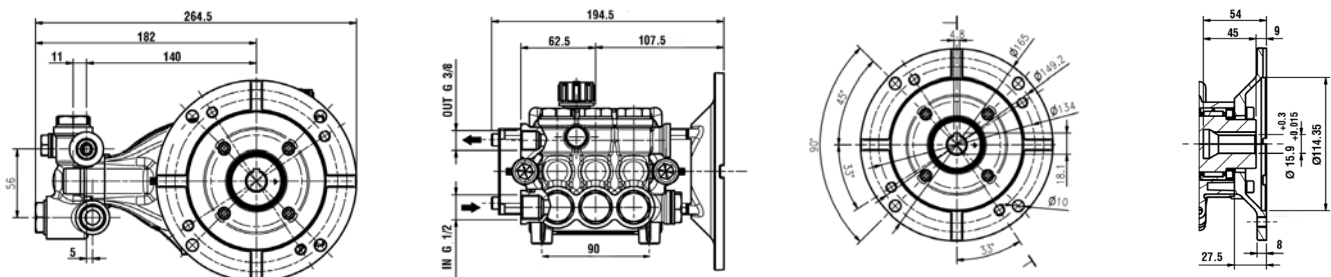
- Designed and engineered exclusively for Kärcher pressure washers.
- Seven year limited warranty.
- NEW** • Forged brass manifold with FEA computer enhanced design to increase strength in critical areas.
- NEW** • Die cast aluminum crackcase with extended piston rod guides for long seal life.
- NEW** • Die cast aluminum connecting rods with extended length and size.
- NEW** • Mirror finish ceramic plungers with increased thickness to resist thermal shock and corrosion.
- Industrial duty ball bearings.
- Stainless steel inlet and discharge valve assemblies.
- Forged valve caps with recessed O-rings to withstand leakage at high pressures.
- Dacromet® coated manifold bolts for extra corrosion resistance.
- U-Seal packing assembly for long life and temperature resistance.
- Flanged for direct coupling to an electric motor with a 56C mounting.



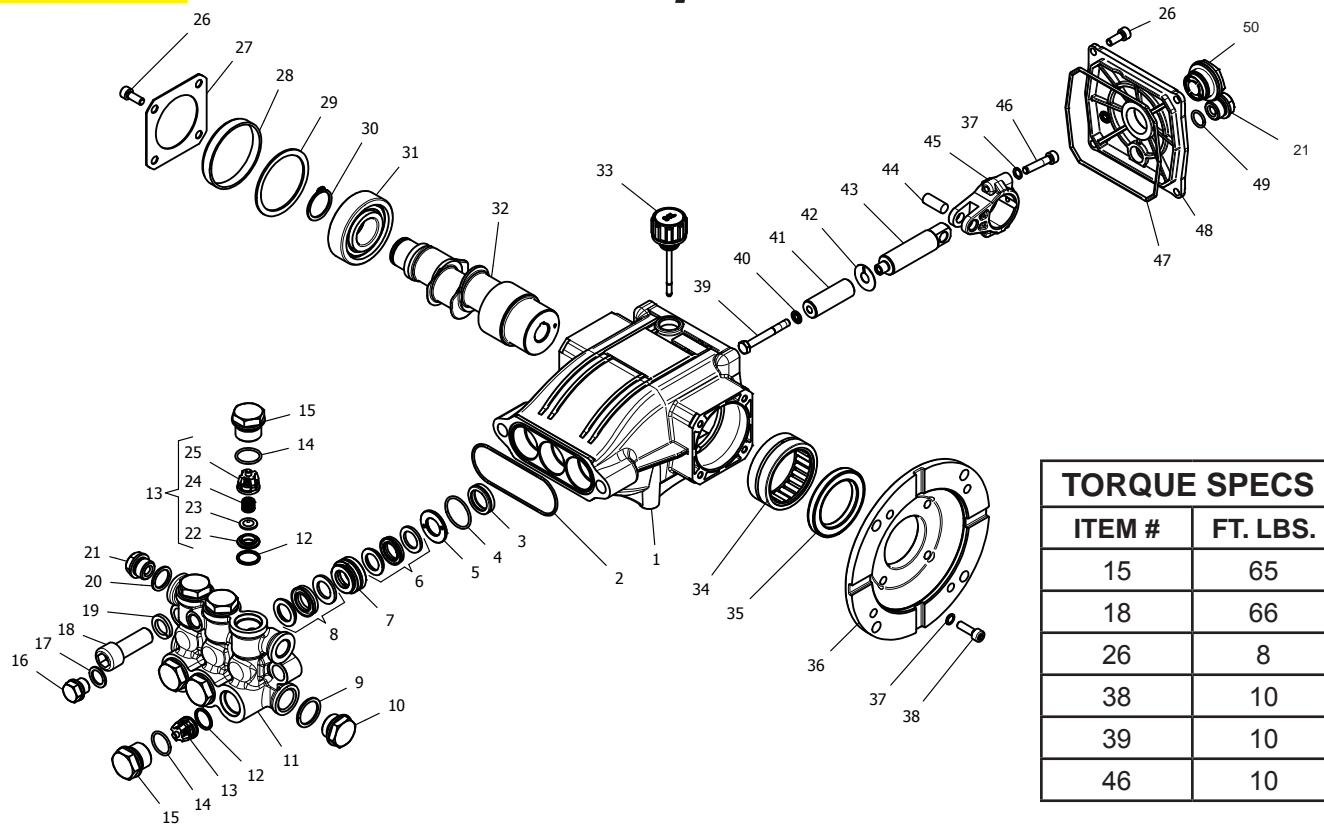
SPECIFICATIONS

PUMP MODEL	KF2030F	KF2030S	KF2830F	KF2830S	KF3530F
Part Number	8.923-790.0	8.923-791.0	8.923-792.0	8.923-793.0	8.923-794.0
Maximum Volume (GPM)	2.1	2.1	2.8	2.8	3.5
Max. Discharge Pressure (PSI)	3000	3000	3000	3000	3000
Maximum Pump Speed	3450	1725	3450	1725	3450
Maximum Inlet Pressure	125 PSI				
Maximum Inlet Vacuum	Flooded				
Bore	14 mm	16 mm	14 mm	16 mm	14 mm
Stroke	6 mm	7.8 mm	8.6 mm	11 mm	10.6 mm
Crankcase Oil Capacity	13.5 oz				
Maximum Fluid Temperature	185° F				
Inlet Port Thread	1/2-14 BSPP-F				
Discharge Port Thread	3/8-19 BSPP-F				
Gauge Port Thread	NA	1/4-19 BSPP-F	NA	1/4-19 BSPP-F	NA
Shaft Diameter x Shaft Length	5/8" Hollow				3/4" Hollow
Weight	17 Lbs				
Dimensions (L x W x H)	9.85 x 8.75 x 5.30 in.				

DIMENSIONS



KÄRCHER® KF Series Pump



TORQUE SPECS	
ITEM #	FT. LBS.
15	65
18	66
26	8
38	10
39	10
46	10

PARTS LIST

ITEM	PART NO.	DESCRIPTION	QTY	ITEM	PART NO.	DESCRIPTION	QTY	ITEM	PART NO.	DESCRIPTION	QTY
1	8.754-841.0	Crankcase	1	19	8.754-850.0	Washer, Lock	2	35	8.754-826.0	Seal, Crankshaft	1
2	8.754-846.0	O-ring Ø1.78 X 72.75	1	20	9.803-198.0	Washer, Copper G3/8	1	36	8.754-844.0	Flange, Motor	1
3*	See Kits Below	Plunger Oil Seal	3	21	8.707-262.0	Plug, Brass G3/8	2	37	9.803-210.0	Washer	10
4*	See Kits Below	O-ring Ø1.78 X 26.7	3	22*	See Kits Below	Valve Seat	6	38	8.752-824.0	Screw, 6 mm	4
5*	See Kits Below	Washer, Pressure Ring	3	23*	See Kits Below	Valve Plate	6	39*	8.754-855.0	Bolt, Plunger	3
6*	See Kits Below	U-Seal	3	24*	See Kits Below	Valve Spring	6	40*	8.754-092.0	Spacer, Copper	3
7*	See Kits Below	Pressure Ring	3	25*	See Kits Below	Valve Cage	6	41	8.754-848.0	Plunger, 16mm (2030S, 2830S)	3
8*	See Kits Below	U-Seal	3	26	9.802-939.0	Screw, M6 X 16	8		8.754-849.0	Plunger, 14mm (2030F, 2830F, 3530F)	3
9	9.803-199.0	Washer, Copper G1/2	1	27	8.717-137.0	Bearing Cover	1	42	9.803-962.0	Spacer, Copper	3
10	9.802-926.0	Plug, Brass G1/2	1	28	9.803-954.0	Bearing Seal	1	43	8.754-827.0	Plunger Rod	3
11	8.754-852.0	Manifold (16mm Models)	1	29	8.754-843.0	Seal Spacer, Crankshaft	1	44	9.803-965.0	Connecting Rod Pin	3
	8.754-853.0	Manifold (14mm Models)	1	30	9.802-914.0	Snap Ring, 25 mm	1	45	9.803-966.0	Connecting Rod	3
12*	8.717-233.0	O-ring Ø1.78 X 15.6	6	31	9.803-955.0	Bearing, Ball	1	46	8.933-020.0	Screw, Connecting Rod	6
13*	See Kits Below	Valve Assembly	6	32	8.754-835.0	Shaft, 5/8" Hollow 2030F	1	47	8.754-847.0	O-ring Ø2.62 X 111.62	1
14*	9.803-948.0	O-ring Ø1.78 X 18.77	6		8.754-836.0	Shaft, 5/8" Hollow 2030S	1	48	8.754-842.0	Cover, Crankcase	1
15	9.803-949.0	Valve Plug	6		8.754-837.0	Shaft, 5/8" Hollow 2830F	1	49	9.803-906.0	O-ring Ø1.78 X 14	1
16	8.754-851.0	Plug, Brass G1/4 (16mm)	1		8.754-838.0	Shaft, 5/8" Hollow 2830S	1	50	9.803-202.0	Sight Glass, G3/4	1
17	8.754-845.0	Washer, Copper G1/4 (16mm Models)	1		8.754-839.0	Shaft, 5/8" Hollow 3530F	1				
18	8.754-854.0	Bolt, Manifold M14 X 40	2	33	8.754-219.0	Oil Dipstick	1				
				34	8.754-840.0	Bearing Needle	1				

* Available in kit (See below)

REPAIR KITS

KIT NUMBERS	8.754-860.0	8.754-856.0	8.754-861.0	8.754-857.0	8.754-862.0	8.754-858.0	8.754-859.0	9.803-937.0
KIT DESCRIPTION	Plunger Seals 14 mm**	Plunger Seals 16 mm**	Seal Packing 14 mm**	Seal Packing 16 mm**	Plunger 14 mm**	Plunger 16 mm**	Complete Valve	Plunger Oil Seals
ITEM NUMBERS INCLUDED	4, 6, 8	4, 6, 8	4, 5, 6, 7, 8	4, 5, 6, 7, 8	39, 40, 41, 42	39, 40, 41, 42	12, 13, 14	3
NO. OF CYLINDERS KIT WILL SERVICE	3	3	1	1	1	1	6	3

**14 mm Models: 2030F, 2830F, 3530F; 16 mm Models: 2030S, 2830S