

Model G 3025 BH



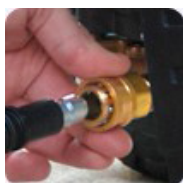
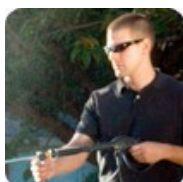
Introducing the newly designed **G 3025 BH** from Kärcher! Building on the industry-leading design of its 2006 predecessor, the G 3025 BH has been upgraded with new features requested by our customers, including convenient **quick connect couplings** for the high-pressure hose and a **wand stabilizer grip** to reduce wrist and forearm fatigue while cleaning. The result is a pressure washer that is powerful, versatile, attractive and affordable.

The G 3025 BH sports many other industry-leading features, including a **de detergent tank with adjustable flow control**, a folding handle for easy storage and an upright frame with 12" pneumatic tires and metal wheels. As with our other G-series pressure washers, the G 3025 BH uses technology borrowed from our successful line of commercial products, including a **commercial-grade pump with brass pump head** developed exclusively by our German engineers. (The same pump technology was used by Kärcher to clean the presidential faces on [Mount Rushmore](#).)

The G 3025 BH is also equipped with a reliable, easy to start **187cc HP Honda GC 190 engine** and a full set of our patented Pro-Style nozzles. A full line of accessories is available to further enhance the capabilities of this exciting new pressure washer. Elevate your level of cleaning today with the **G 3025 BH** from Kärcher!

Clean Green: In 2007, any Kärcher G 3025 BH model pressure washer bought at Sam's Club came bundled with enough carbon offsets from [Terrapass](#) to balance out two years of typical usage. It also included a thermometer and a booklet of handy energy-saving home improvement projects.

NEW! View online "how-to" videos using Kärcher gasoline pressure washers. These videos demonstrate proper steps to achieve optimum cleaning results.



TECHNICAL SPECS

Part Number	1.194-602.0
Operating Pressure	3000 PSI
Power Supply	187cc Honda GC 190
Water Volume	2.5 GPM, Direct-Drive Axial Pump
Maximum Water Inlet Temp	104° F
Weight w/o Accessories	65 lbs.
Dimensions (L x W x H)	22" x 24" x 44"
Warranty	1 year limited Kärcher warranty [View Kärcher Warranty] 2 year limited Honda engine warranty [View Honda Warranty]

POWERED by HONDA

G 3025 BH STANDARD ACCESSORIES

Commercial-grade, Zinc-plated Spray Wand with Quick Connect Adapter
Commercial-grade Trigger Gun with Child Safety Lock
Pro-Style Quick Connect nozzles (0°, 15°, 25°, 40°, detergent)
Detachable Detergent Tank with Adjustable Soap Dispenser
Integrated Hose, Trigger Gun and Spray Wand Holder
25 Ft. High Pressure Hose with Quick Connect Couplings
Wand Stabilizer Grip

» OPTIONAL ACCESSORIES FOR THE G 3025 BH

- Pump Guard
- Push-On Wash Brush Kit
- Set of 5 Quick Connect High Pressure Spray Nozzles
- Rotating Wash Brush Kit
- Water Suction Hose with Filter
- Pipe Cleaning Kit
- Wet Sandblasting Kit without Abrasive Control
- Wet Sandblasting Kit with Abrasive Control
- FR 30 Surface Cleaner Kit
- Universal Wash Brush Kit
- DirtBlaster™ Rotary Nozzle
- SoapPac: All Purpose Cleaner
- SoapPac: Deck and Patio Cleaner
- SoapPac: Degreaser
- SoapPac: Exterior House Cleaner
- SoapPac: Vehicle Wash and Wax