

PARTS LIST FOR
3004 SERIES
PORTABLE
DIESEL DRIVEN/BELT DRIVE
COLD WATER PRESSURE WASHER
(AFTER SERIAL #10823804)

Engine Oil Grade:	SAE 20W-40
Engine Oil Capacity:	50 oz.
Pump Oil Grade:	Pump Oil #AW-4085-0016
Pump Oil Capacity:	40.6 oz.
Nozzle Size:	4.5

This Parts Listing has been compiled for your benefit. You can be assured your new Cold Water Pressure Washer was constructed and designed with quality and performance in mind using over 25 years experience in the pressure washer business. Each component has been rigorously tested to insure the highest level of acceptance.

The contents of this Parts Listing are based on the latest product information available at the time of publication. The manufacturer reserves the right to make changes in price, color, materials, equipment, specifications or models at any time without notice.

WARNING

THIS IS A PROFESSIONAL HIGH PRESSURE, COLD WATER PRESSURE WASHER. CAUTION SHOULD BE OBSERVED WHEN USING OR REPAIRING THIS UNIT! READ AND FOLLOW THE SAFETY WARNINGS LISTED BELOW BEFORE ATTEMPTING ANY REPAIRS ON THIS PRESSURE WASHER!

SAFETY WARNINGS

1. NEVER alter or modify the equipment. Be sure any accessory items and system components being used will withstand the pressure developed. Use only genuine manufactured parts for repair of your pressure washer. Failure to do so can cause hazardous operating conditions and will VOID warranty.
2. NEVER maintenance the unit while running. Using the engine stop lever turn the engine off, remove the key from the key switch. Turning over the machinery by hand during adjustment or cleaning might start the machinery, causing serious injury to the operator.
3. Know how to stop and bleed pressures quickly. Be thoroughly familiar with controls.
4. Before servicing the unit, turn unit off, relieve the water pressure and allow the unit to cool down. Do not make repairs while the unit is running. Service in a clean, dry, flat area.
5. After testing the machine, DO NOT leave the pressurized unit unattended. Shut off the unit and release trapped pressure before leaving.

Table of Contents

SPECIFICATIONS	3
NOTES	4
NOTES	5
FRAME ASSEMBLY FOR 3004 (AFTER SERIAL #10823804)	6
PUMP ASSEMBLY (3-0203)	8
UNLOADER ASSEMBLY (8-0634)	10

SPECIFICATIONS

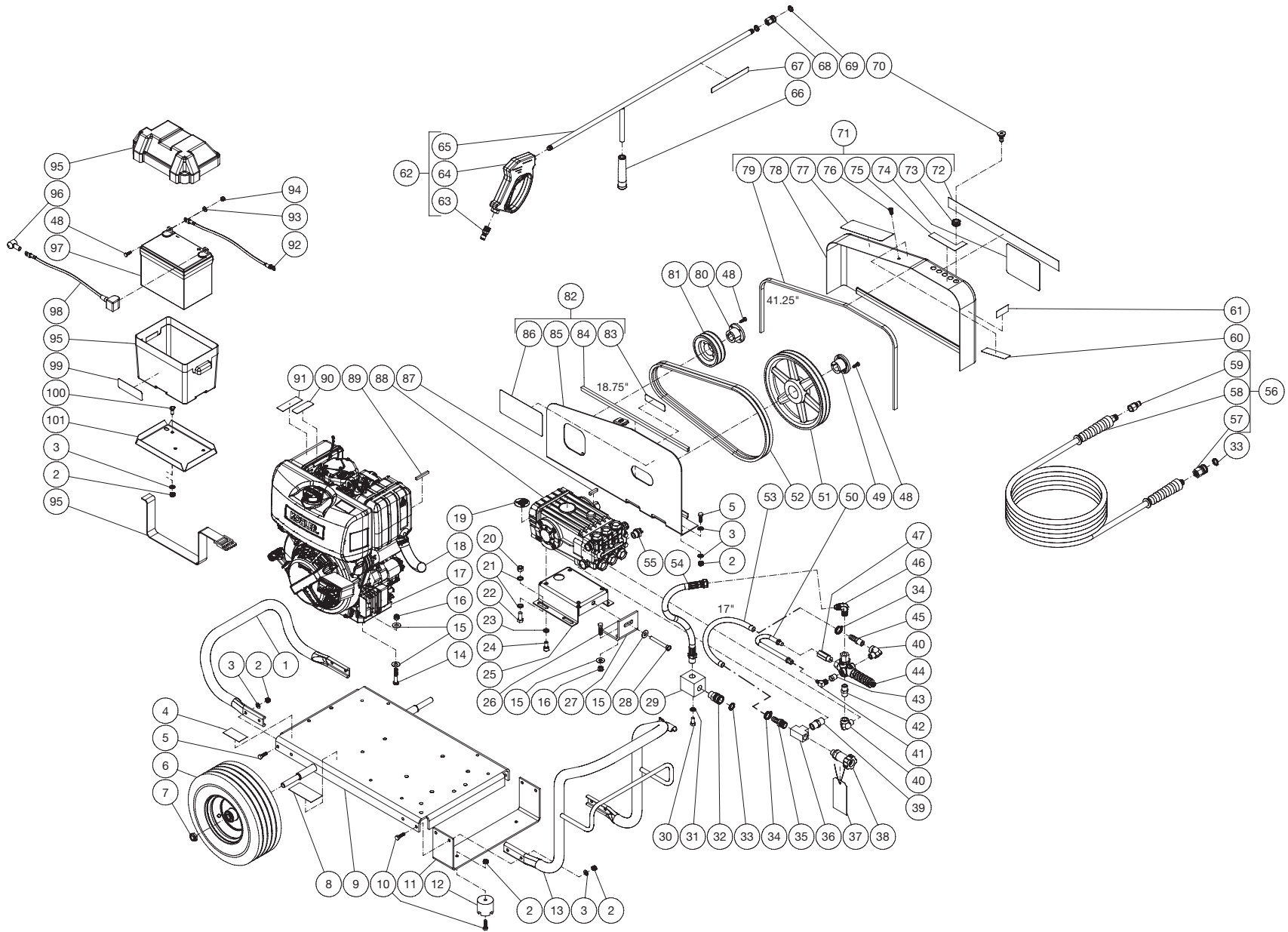
Operating Pressure (PSI/Bar):	3000/206.8
High Pressure Nozzle:	4.5
Water Volume (GPM/lpm):	3.9/14.8
Engine:	Kohler
Model	KD440
Engine Type	Air Cooled, Vertical Single Cylinders, Four Stroke Diesel
Oil Type	SAE20W-40
Oil Capacity (oz./liters)	50/1.5
Fuel Type	Diesel
Fuel Capacity (gallon/ liters)	1.3/5
Starting	Electric
Maximum No Load RPM	3600 (+/- 100) RPM
Pump:	Belt Driven, Oil Bath, Triplex Piston
Oil Type	Pump Oil #AW-4085-0016
Oil Capacity (oz./liters)	41/1.2
Plungers	Ceramic
Manifold	Forged Brass
Valves	Stainless Steel
Unloader	Preset
Heat Dump Valve	Relieves heated water during unloader bypass stage
Unit Net Weight (lbs/Kg)	263/119
Unit Shipping Weight (lbs/Kg)	333/151
Unit Net Dimension (in/cm)	46Lx28Wx30H/117Lx71Wx76H
Unit Shipping Dimension (in/cm)	48.5Lx30.5Wx35.5H/123Lx77.5Wx90H

NOTES

DATE	SERIAL #	REASON FOR CHANGE
11/19/14	10823804	CHANGED BELTS & SHEAVES & BYPASS HOSE SETUP.

NOTES

FRAME ASSEMBLY FOR 3004 (AFTER SERIAL #10823804)

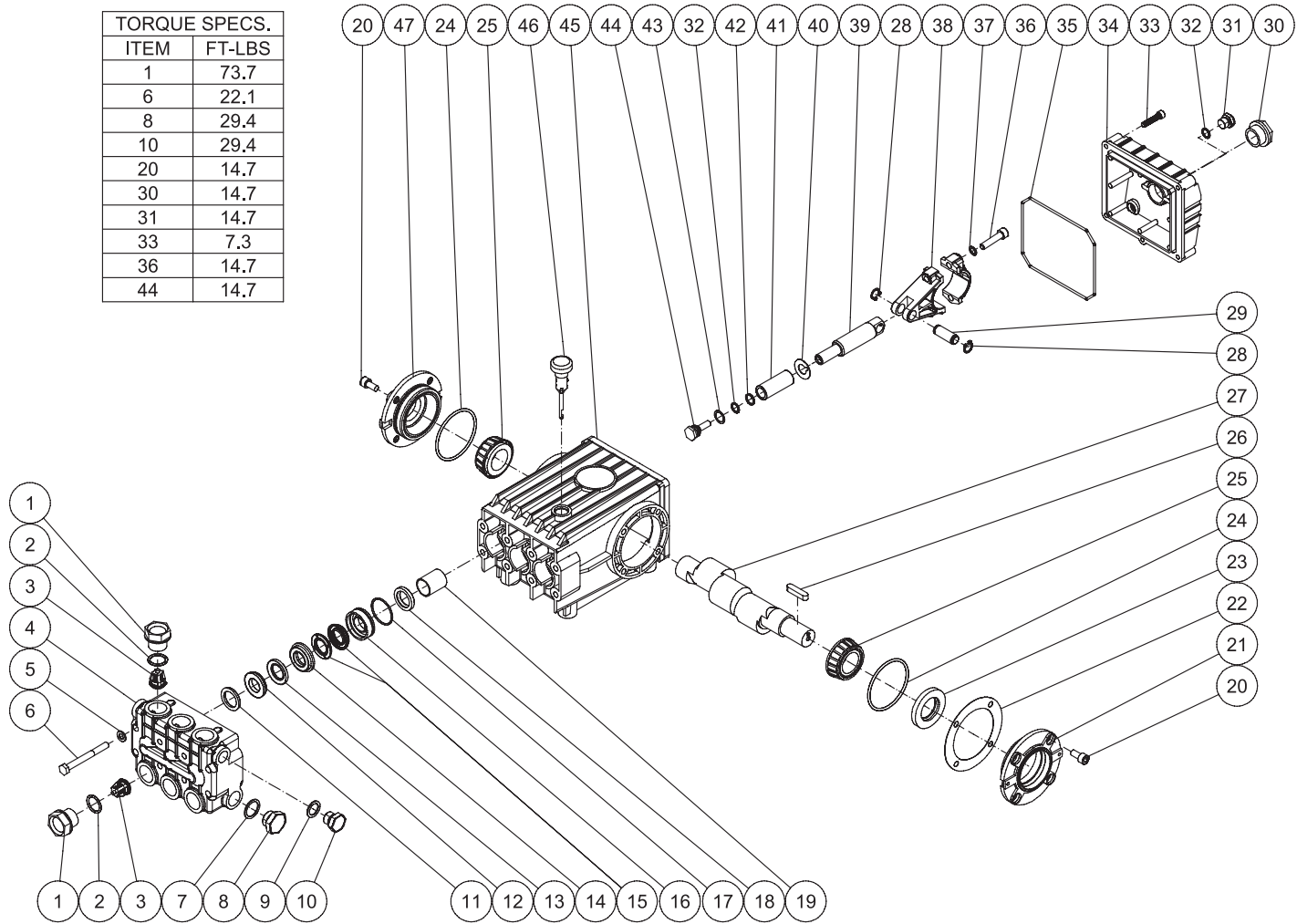


DC-3004-W0K7G 110420 ATL

FRAME ASSEMBLY				FRAME ASSEMBLY			
ITEM	TITLE	PART #	QTY	ITEM	TITLE	PART #	QTY
1	HANDLE	7-0175A18	1	54	HOSE	15-0141	1
2	LOCKNUT	30-0157	16	55	RELIEF VALVE	22-0005	1
3	WASHER	28-0003	20	56	HOSE ASSEMBLY	851-0338	1
4	DECAL	-	1	57	QUICK CONNECT SOCKET	17-0004	1
5	BOLT	27-0067	8	58	HOSE	15-0209	1
6	WHEEL	14-0150	2	59	QUICK CONNECT	17-0006	1
7	LOCKNUT	30-0117	2	60	DECAL - RISK OF BURNS (SEE 71-1035)	N/A	1
8	DECAL- SILVER STICKER	N/A	1	61	DECAL - MADE IN USA	34-3553	1
9	BASEPLATE	5-0117A18	1	62	GUN/WAND ASSEMBLY	851-0095	1
10	BOLT	27-0068	6	63	QUICK CONNECT	17-0005	1
11	UNDERBRACKET	13-0137A18	1	64	GUN	16-0446	1
12	ISOLATOR	14-0008	2	65	WAND (INCLUDES GRIP & QUICK CONNECT)	16-0418	1
13	HANDLE	7-0174A18	1	66	GRIP	7-0002	1
14	BOLT	27-0121	4	67	DECAL - RISK OF INJECTION (SEE 71-1035)	N/A	1
15	WASHER	28-0023	11	68	QUICK CONNECT	17-0001	1
16	LOCKNUT	30-0159	6	69	O-RING	25-0122	1
17	ENGINE	1-0217	1	70	NOZZLE	18-0397	1
18	EXHAUST DIVERTER	W/ENGINE	1	-	NOZZLE	18-0399	1
19	DECAL - PUMP	N/A	1	-	NOZZLE	18-0400	1
20	LOCKNUT	30-0161	4	-	NOZZLE	18-0401	1
21	WASHER	28-0030	8	71	BELTGUARD COVER ASSY - MED	851-0216	1
22	BOLT	27-0166	4	72	DECAL - STRIPE	N/A	1
23	LOCKWASHER	29-0055	4	73	GROMMET	33-0001	5
24	BOLT	27-8471	4	74	DECAL - LOGO	N/A	1
25	PUMP BRACKET	5-0101A18	1	75	DECAL - NOZZLE (SEE 71-1035)	N/A	1
26	BOLT	27-0118	2	76	FASTENER	33-0197	1
27	BRACKET	13-0003A18	1	77	DECAL - OPERATION (SEE 71-1035)	N/A	1
28	BOLT	27-0576	1	78	BELTGUARD COVER	N/A	1
29	MANIFOLD BLOCK	51-0012	1	79	EDGING *(FOUR FEET REQUIRED)	33-0020	1
30	BOLT	27-0116	2	80	BUSHING	9-0005	1
31	LOCKWASHER	29-0008	2	81	SHEAVE	10-0025	1
32	QUICK CONNECT SOCKET	17-0029	1	82	BELTGUARD BACK ASSY - MED	851-0310	1
33	O-RING	25-0123	2	83	DECAL - BELTGUARD IN PLACE (SEE 71-1035)	N/A	1
34	HOSE CLAMP	42-0011	2	84	EDGING *(TWO FEET REQUIRED)	33-0020	1
35	BARB	23-0045	1	85	BELTGUARD BACK	N/A	1
36	TEE	23-0043	1	86	DECAL - WARNING (SEE 71-1035)	N/A	1
37	TAG - WATER SUPPLY INLET (E)	N/A	1	87	KEY	43-0048	1
38	FILTER	19-0206	1	88	PUMP	3-0203	1
39	NIPPLE	23-0012	1	89	KEY	43-0078	1
40	ELBOW	24-0105	2	90	DECAL- DO NOT USE ETHER	N/A	1
41	ELBOW	23-0237	1	91	DECAL - RISK OF FIRE (SEE 71-1035)	N/A	1
42	NIPPLE	24-0010	1	92	CABLE	32-9111	1
43	REDUCER	23-0017	1	97	BATTERY	-	1
44	UNLOADER	8-0634	1	94	LOCKNUT	30-0155	2
45	HOSE BARB	23-0105	1	95	BATTERY BOX	33-0092	1
46	ELBOW	24-0092	1	93	WASHER	28-0002	2
47	EASY START VALVE	22-0242	1	96	TERMINAL PROTECTOR	33-0508	1
48	BOLT	27-0015	6	98	CABLE	32-9112	1
49	BUSHING	9-0017	1	99	DECAL - RISK OF INJURY (SEE 71-1035)	N/A	1
50	EZ START HOSE	15-0140	1	100	BOLT	27-0066	2
51	SHEAVE	10-0040	1	101	BATTERY RETAINER	20-0264A18	1
52	BELT	11-0009	2	-	DECAL SET	71-1035	1
53	HOSE *(TWO FEET REQUIRED)	15-0022	1	*MUST ORDER IN ONE FOOT LENGTHS			

PUMP ASSEMBLY (3-0203)

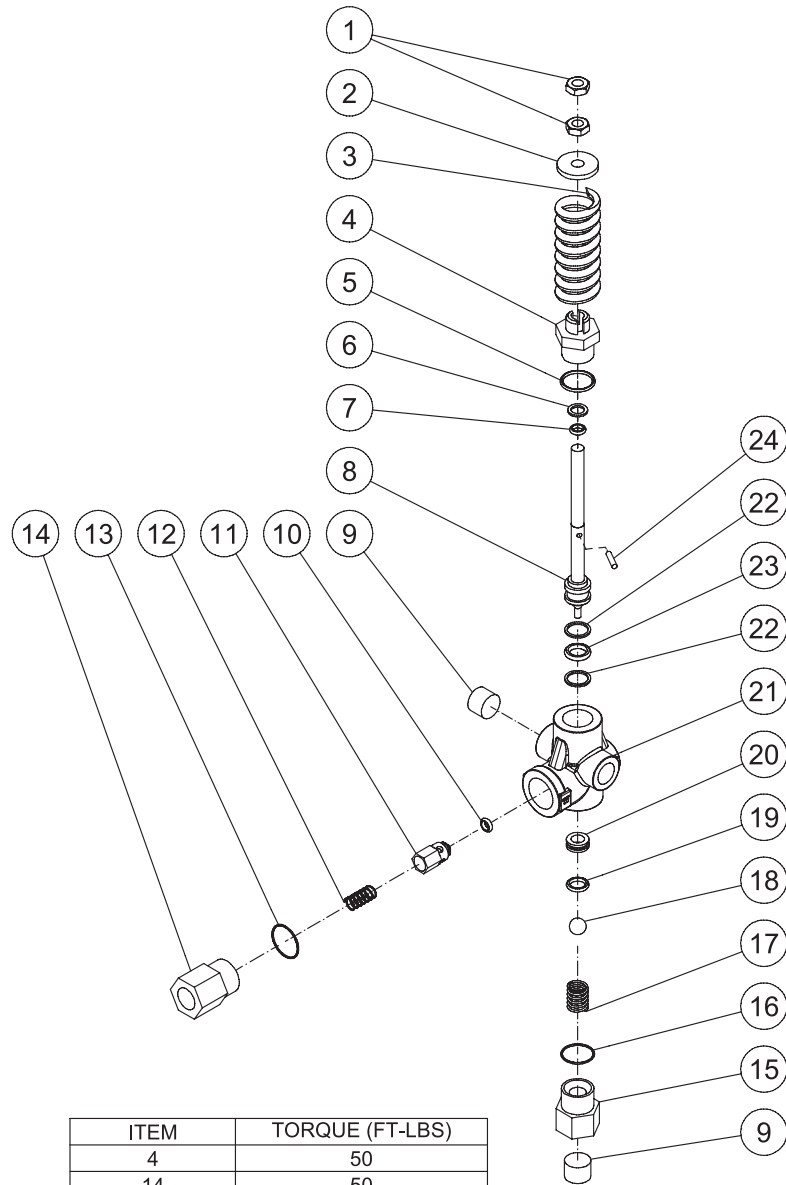
TORQUE SPECS.	
ITEM	FT-LBS
1	73.7
6	22.1
8	29.4
10	29.4
20	14.7
30	14.7
31	14.7
33	7.3
36	14.7
44	14.7



PUMP ASSEMBLY								
ITEM	DESCRIPTION	PART #	QTY	ITEM	DESCRIPTION	PART #	QTY	
1	VALVE CAP	46-0889	6	25	BEARING	48-0012	2	
2	O-RING	25-0012	6	26	KEY	43-0048	1	
3	VALVE (SEE KIT 70-0009)	SEE KIT	6	27	CRANKSHAFT (3-0202)	46-0050	1	
4	MANIFOLD	N/A	1	-	CRANKSHAFT (3-0203)	46-0888	1	
5	WASHER	28-1039	8	28	RETAINING RING	46-0103	6	
6	BOLT	27-8185	8	29	CONNECTING ROD PIN	43-0032	3	
7	WASHER	28-1038	2	30	OIL LEVEL INDICATOR	46-0114	1	
8	PLUG	39-0019	2	31	PLUG	39-0017	1	
9	WASHER	28-1002	2	32	O-RING	25-0014	4	
10	PLUG	39-0018	2	33	BOLT	27-8404	5	
11	HEAD RING (SEE KIT 70-0030 AND 852-0122)	70-0030	3	34	CRANKCASE OPEN COVER	46-0295	1	
12	V-PACKING SUPPORT (SEE KIT 70-0147 AND 852-0122)	26-0098	3	35	O-RING	25-0339	1	
13	O-RING (SEE KIT 70-0147 AND 70-0148 AND 852-0122)	25-0207	3	36	BOLT	27-8435	6	
14	HIGH PRESSURE INTERMEDIATE SEAL RETAINER (SEE KIT 70-0148)	46-0659	3	37	LOCKWASHER	29-0154	6	
15	PRESSURE SEAL (SEE KIT 70-0147 AND 852-0122)	26-0197	3	38	CONNECTING ROD	46-0051	3	
16	LOW PRESSURE SEAL RETAINER	46-0057	3	39	PISTON ROD	46-0056	3	
17	O-RING (SEE KIT 852-0122)	25-0015	3	40	SLINGER WASHER	46-0146	3	
18	OIL SEAL	26-0047	3	41	PLUNGER	46-0052	3	
19	BUSHING	9-0029	3	42	BACK-UP RING	46-0109	3	
20	BOLT	27-8431	8	43	WASHER	28-0400	3	
21	CRANKCASE COVER	46-0296	1	44	NUT / PISTON	46-0069	3	
22	SHIM	46-0113	1	45	CRANKCASE	46-0047	1	
23	OIL SEAL	26-0049	1	46	OIL DIP STICK	46-0144	1	
24	O-RING	25-0013	2	47	CRANKCASE COVER	46-0336	1	

REPLACEMENT KITS				
KIT#	DESCRIPTION	ITEMS	# OF ASSEMBLIES	# OF CYLINDERS
70-0009	VALVES	3	6	3
70-0030	HEAD RING	11	3	3
70-0147	V-PACKING	12, 13, 15	3	3
70-0148	INTERMEDIATE RETAINER	13, 14	3	3
852-0122	V-PACKING ASSY	11-13, 15, 17	3	3

UNLOADER ASSEMBLY (8-0634)



ITEM	TORQUE (FT-LBS)
4	50
14	50
15	50

8-0634 052213 JDK			
UNLOADER ASSEMBLY			
ITEM	DESCRIPTION	PART #	QTY
1	NUT	8-0293	2
2	SPRING SPACER	46-1527	1
3	SPRING	49-0171	1
4	FITTING	46-1529	1
5	O-RING (SEE KIT 70-0625)	SEE KIT	1
6	O-RING (SEE KIT 70-0625)	SEE KIT	1
7	O-RING (SEE KIT 70-0625)	SEE KIT	1
8	STEM	46-1530	1
9	PLUG	23-0244	2
10	O-RING (SEE KIT 70-0624)	SEE KIT	1
11	POPPET (SEE KIT 70-0624)	SEE KIT	1
12	SPRING (SEE KIT 70-0624)	SEE KIT	1
13	O-RING	25-0672	1
14	OUTLET FITTING	46-1531	1
15	INLET FITTING (SEE KIT 70-0625)	SEE KIT	1
16	O-RING (SEE KIT 70-0625)	SEE KIT	1
17	SPRING	49-0172	1
18	BALL (SEE KIT 70-0625)	SEE KIT	1
19	O-RING (SEE KIT 70-0625)	SEE KIT	1
20	SEAT	46-1532	1
21	FORGING	46-1533	1
22	BACKUP RING (SEE KIT 70-0625)	SEE KIT	2
23	O-RING (SEE KIT 70-0625)	SEE KIT	1
24	PIN (SEE KIT 70-0625)	SEE KIT	1

REPLACEMENT KITS			
KIT #	DESCRIPTION	ITEMS	QTY
70-0624	KIT - CHECK VALVE	10-12	1, 1, 1
70-0625	KIT - UNLOADER REBUILD	5-7, 15-16, 18-19, 22-24	1, 1, 1, 1, 1, 1, 1, 2, 1, 1

