

PARTS LIST FOR
2405/3004 SERIES
PORTABLE
ELECTRIC DRIVEN/BELT DRIVE
COLD WATER PRESSURE WASHER
(AFTER SERIAL #11400525)

Motor Horsepower:	7.5HP
Pump Oil Grade:	Pump Oil #AW-4085-0016
Pump Oil Capacity:	40.6 oz.
Nozzle Size:	
2405:	6.0
3004:	4.0

This Parts Listing has been compiled for your benefit. You can be assured your new Cold Water Pressure Washer was constructed and designed with quality and performance in mind using over 25 years experience in the pressure washer business. Each component has been rigorously tested to insure the highest level of acceptance.

The contents of this Parts Listing are based on the latest product information available at the time of publication. The manufacturer reserves the right to make changes in price, color, materials, equipment, specifications or models at any time without notice.

WARNING
 THIS IS A PROFESSIONAL HIGH PRESSURE, COLD WATER PRESSURE WASHER. CAUTION SHOULD BE OBSERVED WHEN USING OR REPAIRING THIS UNIT! READ AND FOLLOW THE SAFETY WARNINGS LISTED BELOW BEFORE ATTEMPTING ANY REPAIRS ON THIS PRESSURE WASHER!

SAFETY WARNINGS

1. NEVER alter or modify the equipment. Be sure any accessory items and system components being used will withstand the pressure developed. Use only genuine manufactured parts for repair of your pressure washer. Failure to do so can cause hazardous operating conditions and will VOID warranty.
2. NEVER make adjustments on machinery while the unit is connected to the power source. Turning over the machinery by hand during adjustment or cleaning might start the machinery, causing serious injury to the operator.
3. Know how to stop and bleed pressures quickly. Be thoroughly familiar with controls.
4. Before servicing the unit, turn unit off, relieve the water pressure and allow the unit to cool down. Do not make repairs while the unit is running. Service in a clean, dry, flat area.
5. After testing the machine, DO NOT leave the pressurized unit unattended. Shut off the unit and release trapped pressure before leaving.

Table of Contents

NOTES	3
SPECIFICATIONS 2405	4
SPECIFICATIONS 3004	5
FRAME ASSEMBLY FOR 2405/3004 (230 VOLT/SINGLE PHASE) (AFTER SERIAL #11326874)	6
FRAME ASSEMBLY FOR 2405/3004 (230 VOLT/THREE PHASE) (AFTER SERIAL #11400525)	8
MOTOR ASSEMBLY (851-0398)	10
MOTOR ASSEMBLY (851-0399) (AFTER SERIAL #11400525)	12
MOTOR ASSEMBLY (851-0422) (CX-0003 OPTION) (460V) (AFTER SERIAL #11326874)	14
PUMP ASSEMBLY (3-0202) (AFTER SERIAL #10375000)	16
UNLOADER ASSEMBLY (8-0032)	18
WIRING SCHEMATIC FOR 2405/3004 (230 VOLT/SINGLE PHASE)	20
WIRING DIAGRAM FOR 2405/3004 (230 VOLT/SINGLE PHASE)	21
WIRING SCHEMATIC FOR 2405/3004 (230 VOLT/THREE PHASE) (AFTER SERIAL #11326874)	22
WIRING DIAGRAM FOR 2405/3004 (230 VOLT/THREE PHASE) (AFTER SERIAL #11326874)	23
WIRING SCHEMATIC FOR 2405/3004 (CX-0003 OPTION) (460 VOLT/THREE PHASE) (AFTER SERIAL #11326874)	24
WIRING DIAGRAM FOR 2405/3004 (CX-0003 OPTION) (460 VOLT/THREE PHASE) (AFTER SERIAL #11326874)	25

NOTES

SERIAL BREAK NUMBER:

#10154637

#10375000

#10874728

#11326874

#11400525

SERIAL BREAK EXPLANATION:

CHANGED CORD STRAIN RELIEF ON CONTROL BOX DWG. FROM 32-0040 TO 9-0048. (3006)
(07-27-15 3006 OBSOLETE)

CHANGED PRESSURE SEAL ON PUMPS 3-0202

CHANGED BELTGUARD AND BASEPLATE

WEG MOTOR CHANGE - REPLACED 2-0093 WITH 2-0211

REPLACED 32-1046 AND 32-1047 WITH 32-1349 AND 32-1350

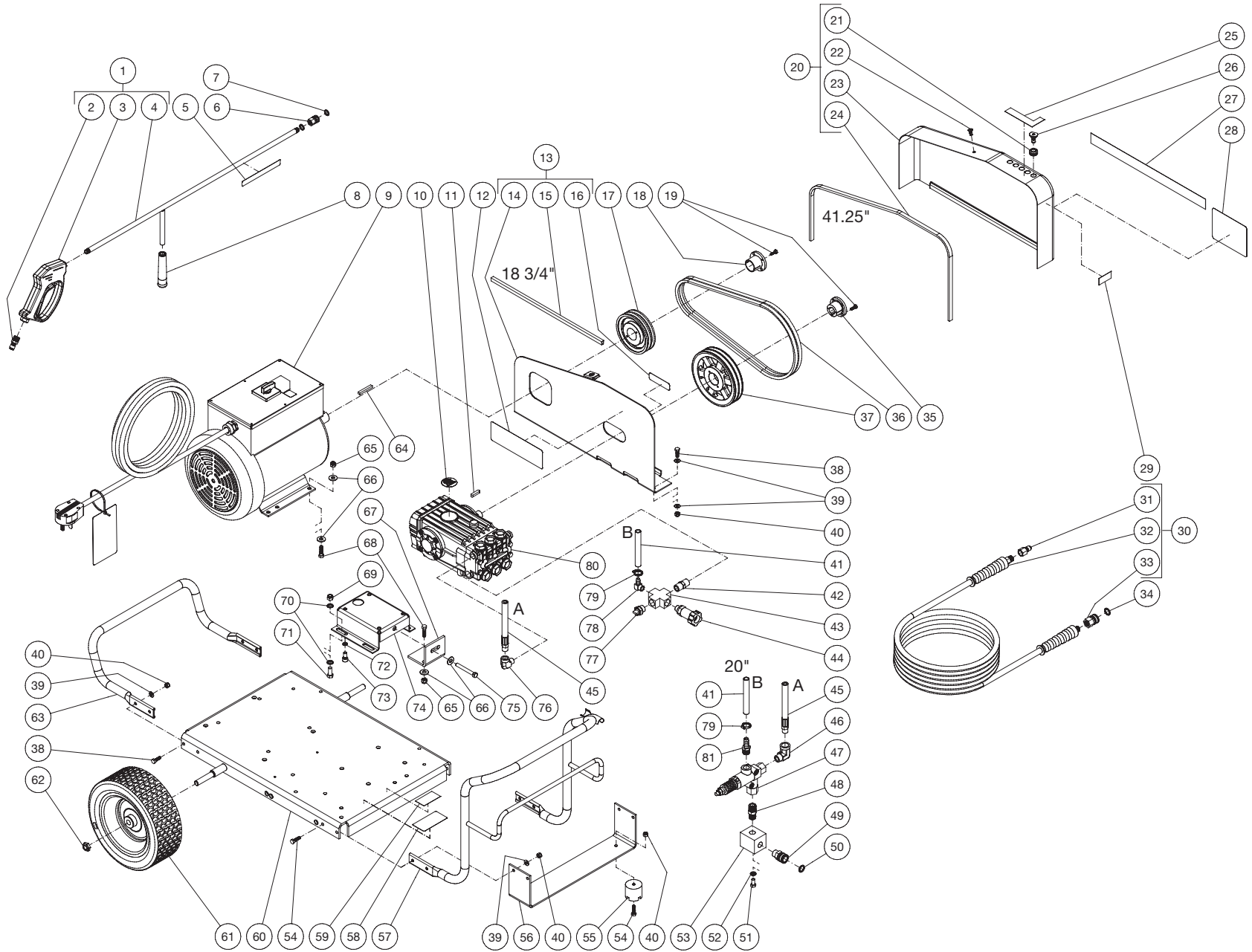
SPECIFICATIONS 2405

Operating Pressure (PSI/Bar):	2400/165.5	
High Pressure Nozzle:	6.0	
Water Volume (GPM/lpm):	4.6/17.4	
Motor:	Totally enclosed fan cooled, circuit breaker thermal overload protection, 10ft. power supply cord.	
Horsepower	7.5	
Voltage	230	230/460
Phase	Single	Three
Amps	32.0	20.0/10.0
Pump:	Belt Driven, Oil Bath, Triplex Piston	
Oil Type	Pump Oil #AW-4085-0016	
Oil Capacity (oz./liters)	40.6/1.20	
Plungers	Ceramic	
Manifold	Forged Brass	
Valves	Stainless Steel	
Thermal Relief Valve	Relieves heated water during unloader bypass stage.	
Unloader:	Preset	
Detergent Injector	Adjustable low pressure down stream from pump	
Unit Net Weight (lbs/Kg)	347/157.5	301/136.5
Unit Shipping Weight (lbs/Kg)	390/176.9	403/182.8
Unit Net Dimension (in/cm)	46Lx28Wx30H/117Lx71Wx76H	46Lx32.5Wx30H/116.8Lx82.5Wx76.19H
Unit Shipping Dimension (in/cm)	49Lx30.5Wx35.5H/124Lx77.5Wx90H	57.25Lx35.75Wx51.25H/145.4Lx90.8Wx130.17H

SPECIFICATIONS 3004

Operating Pressure (PSI/Bar):	3000/206.8	
High Pressure Nozzle:	4.0	
Water Volume (GPM/lpm):	3.5/13.2	
Motor:	Totally enclosed fan cooled, circuit breaker thermal overload protection, 10ft. power supply cord.	
Horsepower	7.5	
Voltage	230	230/460
Phase	Single	Three
Amps	32.0	20.0/10.0
Pump:	Belt Driven, Oil Bath, Triplex Piston	
Oil Type	Pump Oil #AW-4085-0016	
Oil Capacity (oz./liters)	40.6/1.20	
Plungers	Ceramic	
Manifold	Forged Brass	
Valves	Stainless Steel	
Thermal Relief Valve	Relieves heated water during unloader bypass stage.	
Unloader:	Preset	
Detergent Injector	Adjustable low pressure down stream from pump	
Unit Net Weight (lbs/Kg)	347/157.5	301/136.5
Unit Shipping Weight (lbs/Kg)	390/176.9	403/182.8
Unit Net Dimension (in/cm)	46Lx28Wx30H/117Lx71Wx76H	46Lx32.5Wx30H/116.8Lx82.5Wx76.19H
Unit Shipping Dimension (in/cm)	49Lx30.5Wx35.5H/124Lx77.5Wx90H	57.25Lx35.75Wx51.25H/145.4Lx90.8Wx130.17H

FRAME ASSEMBLY FOR 2405/3004 (230 VOLT/SINGLE PHASE) (AFTER SERIAL #11326874)

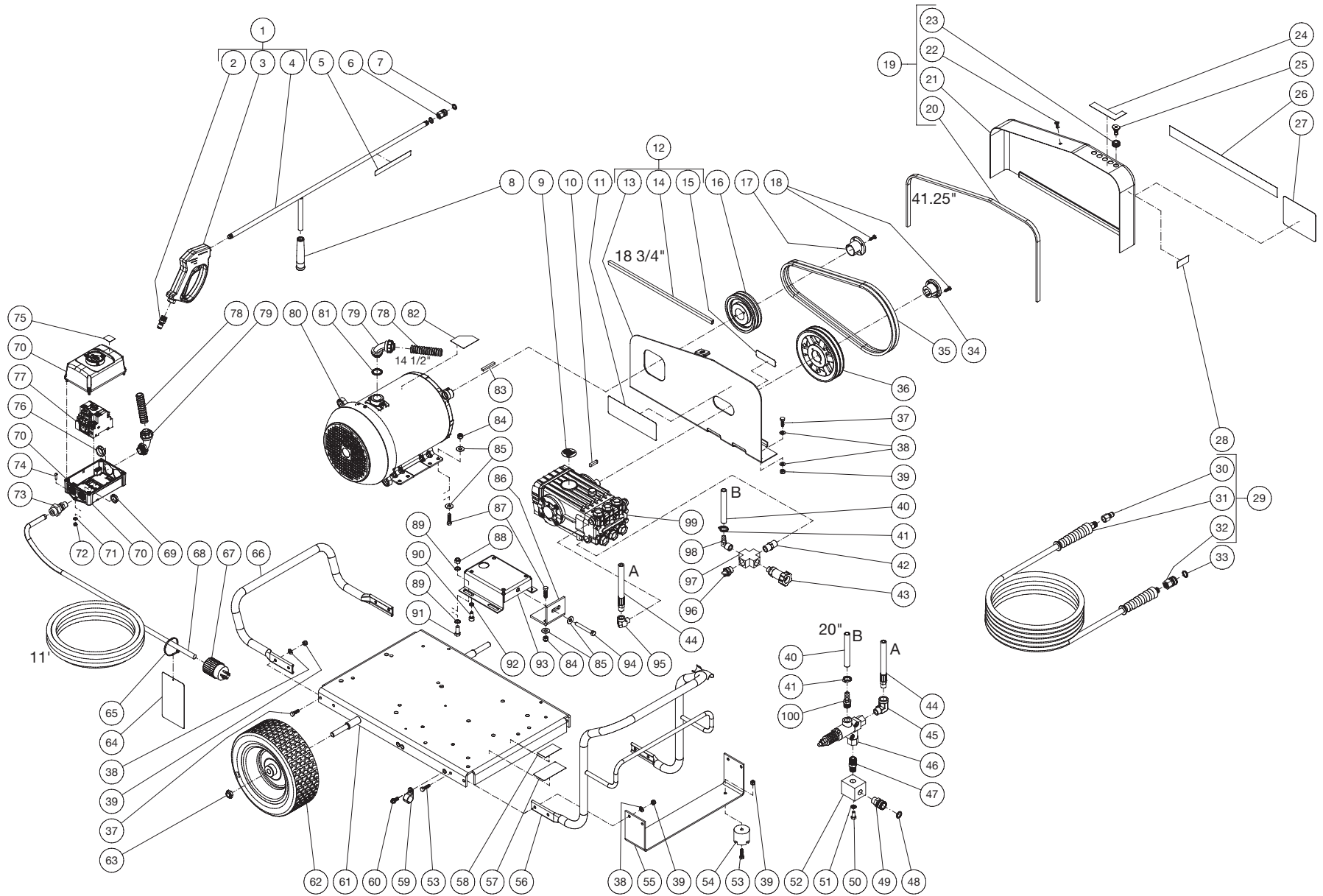


DC-2405_3004-W4E2G 110122

FRAME ASSEMBLY							
ITEM	TITLE	PART #	QTY	ITEM	TITLE	PART #	QTY
1	GUN/WAND ASSEMBLY	851-0095	1	37	SHEAVE	10-0035	1
2	QUICK CONNECT	17-0005	1	38	BOLT	27-0067	8
3	GUN	16-0446	1	39	WASHER	28-0003	16
4	WAND (INCLUDES GRIP & QUICK CONNECT)	16-0418	1	40	LOCKNUT	30-0157	14
5	DECAL - RISK OF INJECTION (SEE 71-1044)	N/A	1	41	HOSE *(TWO FEET REQUIRED)	15-0007	1
6	QUICK CONNECT	17-0001	1	42	NIPPLE	23-0012	1
7	O-RING	25-0122	1	43	CROSS	23-0071	1
8	GRIP-RUBBER FOR WAND	7-0002	1	44	FILTER	19-0206	1
9	MOTOR ASSEMBLY	851-0398	1	45	HIGH PRESSURE HOSE	15-0024	1
10	DECAL - PUMP (SEE 71-1044)	N/A	1	46	ELBOW	24-0006	1
11	KEY - WITH PUMP	43-0028	1	47	UNLOADER	8-0032	1
12	DECAL-WARNING/CAUTION/OPERATION (SEE 71-1044)	N/A	1	48	NIPPLE	24-0031	1
13	BELTGUARD BACK ASSY - ELECTRIC	851-0335	1	49	QUICK CONNECT SOCKET	17-0029	1
14	BELT GUARD BACK	6-0089A18	1	50	O-RING	25-0123	1
15	EDGING *(1044 FEET REQUIRED)	33-0020	1	51	BOLT	27-0116	2
16	DECAL - BELTGUARD IN PLACE (SEE 71-1044)	N/A	1	52	LOCKWASHER	29-0008	2
17	SHEAVE (2405)	10-0041	1	53	MANIFOLD BLOCK	51-0012	1
-	SHEAVE (3004)	10-0025	1	54	BOLT	27-0068	6
18	BUSHING	9-0008	1	55	ISOLATOR	14-0008	2
19	BOLT	27-0015	4	56	BRACKET	13-0015A18	1
20	BELTGUARD COVER ASSEMBLY	850-0242	1	57	FRONT HANDLE	7-0102A18	1
21	GROMMET	33-0001	5	58	DECAL - SILVER STICKER	N/A	1
22	FASTENER	33-0197	1	59	DECAL	-	1
23	BELTGUARD COVER	N/A	1	60	BASEPLATE	5-0333A18	1
24	EDGING *(FOUR FEET REQUIRED)	33-0020	1	61	WHEEL	14-0150	2
25	DECAL - NOZZLE (SEE 71-1044)	N/A	1	62	LOCKNUT	30-0117	2
26	NOZZLE (2405)	18-0414	1	63	REAR HANDLE	7-0105A18	1
-	NOZZLE (2405)	18-0415	1	64	KEY	43-0174	1
-	NOZZLE (2405)	18-0416	1	65	LOCKNUT	30-0159	6
-	NOZZLE (2405)	18-0417	1	66	WASHER	28-0023	11
-	NOZZLE (3004)	18-0397	1	67	BRACKET	13-0003A18	1
-	NOZZLE (3004)	18-0399	1	68	BOLT	27-0118	6
-	NOZZLE (3004)	18-0400	1	69	LOCKNUT	30-0161	4
-	NOZZLE (3004)	18-0401	1	70	WASHER	28-0030	8
27	DECAL - STRIPE W/3004PSI	N/A	1	71	BOLT	27-0166	4
-	DECAL - STRIPE W/2400PSI	N/A	1	72	LOCKWASHER	29-0054	4
28	DECAL - LOGO	N/A	1	73	BOLT	27-8471	4
29	DECAL - MADE IN USA	34-3553	1	74	PUMP BRACKET	5-0101A18	1
30	HOSE ASSEMBLY	851-0338	1	75	BOLT	27-0576	1
31	QUICK CONNECT	17-0006	1	76	ELBOW	24-0105	1
32	HOSE	15-0209	1	77	RELIEF VALVE	22-0005	1
33	QUICK CONNECT SOCKET	17-0004	1	78	ELBOW	23-0050	1
34	O-RING	25-0123	1	79	HOSE CLAMP	42-0011	2
35	BUSHING	9-0017	1	80	PUMP	3-0202	1
36	BELT (2405)	11-0036	2	81	BARB	23-0045	1
-	BELT (3004)	11-0017	2	-	DECAL SET	71-1044	1

*MUST ORDER IN ONE FOOT LENGTHS

FRAME ASSEMBLY FOR 2405/3004 (230 VOLT/THREE PHASE) (AFTER SERIAL #11400525)

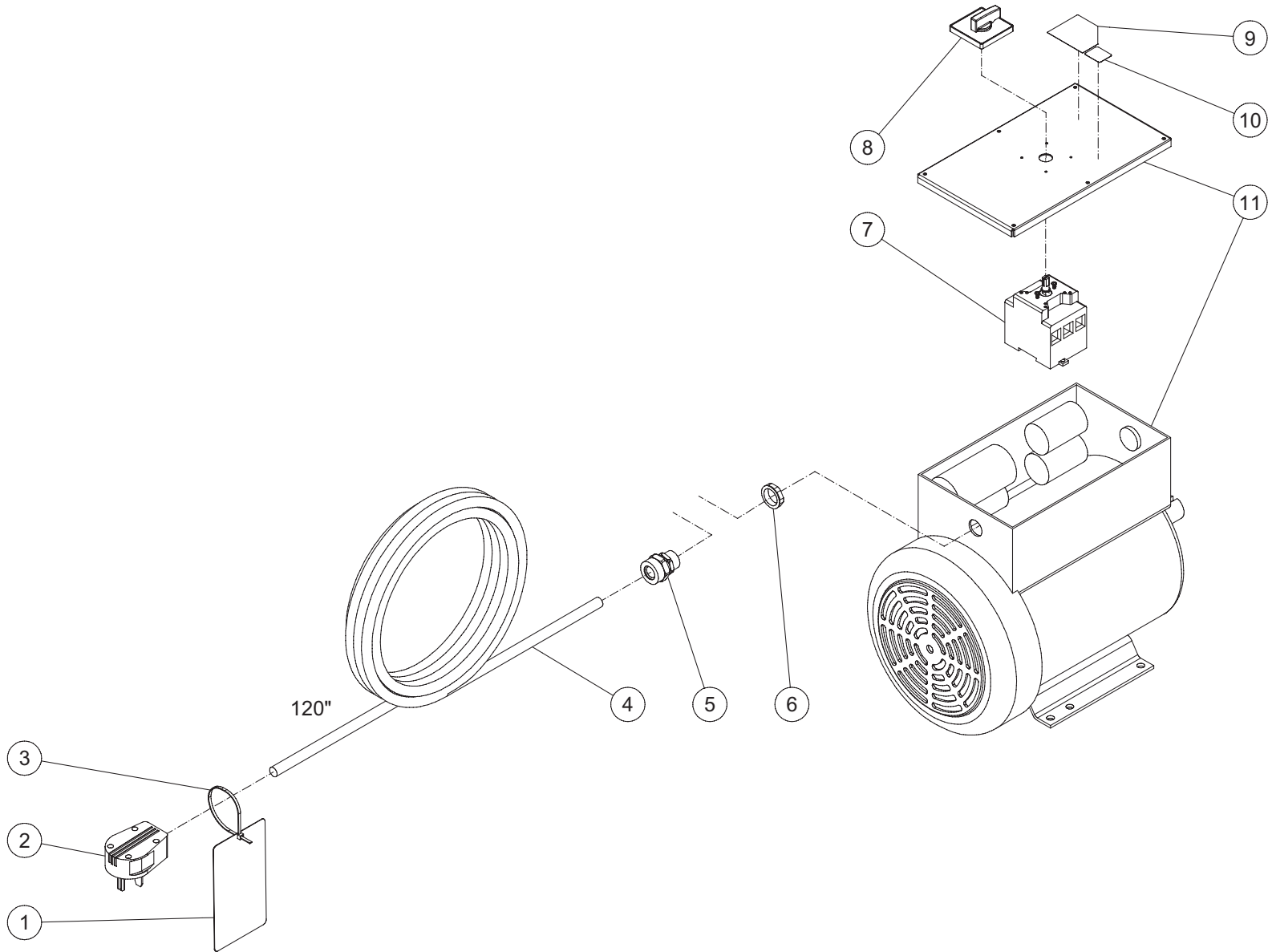


DC-2405_3004-W4E3G 110122

FRAME ASSEMBLY							
ITEM	TITLE	PART #	QTY	ITEM	TITLE	PART #	QTY
1	GUN/WAND ASSEMBLY	851-0095	1	48	O-RING	25-0123	1
2	QUICK CONNECT	17-0005	1	49	QUICK CONNECT SOCKET	17-0029	1
3	GUN	16-0446	1	50	BOLT	27-0116	2
4	WAND (INCLUDES GRIP & QUICK CONNECT)	16-0418	1	51	LOCKWASHER	29-0008	2
5	DECAL - RISK OF INJECTION (SEE 71-1044)	N/A	1	52	MANIFOLD BLOCK	51-0012	1
6	QUICK CONNECT	17-0001	1	53	BOLT	27-0068	6
7	O-RING	25-0122	1	54	ISOLATOR	14-0008	2
8	GRIP-RUBBER FOR WAND	7-0002	1	55	BRACKET	13-0015A18	1
9	DECAL - PUMP (SEE 71-1044)	N/A	1	56	FRONT HANDLE	7-0102A18	1
10	KEY - WITH PUMP	43-0028	1	57	DECAL - SILVER STICKER	N/A	1
11	DECAL-WARNING/CAUTION/OPERATION (SEE 71-1044)	N/A	1	58	DECAL	-	1
12	BELTGUARD BACK ASSY - ELECTRIC	851-0335	1	59	CLIP	33-0291	1
13	BELT GUARD BACK	6-0089A18	1	60	BOLT	27-9524	1
14	EDGING *(TWO FEET REQUIRED)	33-0020	1	61	BASEPLATE	5-0333A18	1
15	DECAL - BELTGUARD IN PLACE (SEE 71-1044)	N/A	1	62	WHEEL	14-0150	2
16	SHEAVE (2405)	10-0041	1	63	LOCKNUT	30-0117	2
-	SHEAVE (3004)	10-0025	1	64	TAG - WARNING RISK OF ELECTROCUTION	N/A	1
17	BUSHING	9-0008	1	65	CABLE TIE	33-0022	1
18	BOLT	27-0015	4	66	REAR HANDLE	7-0105A18	1
19	BELTGUARD COVER ASSEMBLY	850-0242	1	67	PLUG	32-0037	1
20	EDGING *(FOUR FEET REQUIRED)	33-0020	1	-	PLUG (CX-0003)	32-0117	1
21	BELTGUARD COVER	N/A	1	68	CORD *(ELEVEN FEET REQUIRED)	32-0023	1
22	FASTENER	33-0197	1	-	CORD *(ELEVEN FEET REQUIRED)	32-0025	1
23	GROMMET	33-0001	5	69	ELECTRICAL LOCKNUT	32-0108	1
24	DECAL - NOZZLE (SEE 71-1044)	N/A	1	70	STARTER ENCLOSURE	32-1350	1
25	NOZZLE (2405)	18-0414	1	71	WASHER	28-0001	2
-	NOZZLE (2405)	18-0415	1	72	LOCKNUT	30-0154	2
-	NOZZLE (2405)	18-0416	1	73	STRAIN RELIEF	32-0013	1
-	NOZZLE (2405)	18-0417	1	74	SCREW	27-2811	2
-	NOZZLE (3004)	18-0397	1	75	DECAL - WARNING REMOVAL OF COVER (SEE 71-1044)	N/A	1
-	NOZZLE (3004)	18-0399	1	76	ELECTRICAL LOCKNUT	32-0292	1
-	NOZZLE (3004)	18-0400	1	77	STARTER	32-1349	1
-	NOZZLE (3004)	18-0401	1	-	STARTER (CX-0003)	32-1348	1
26	DECAL - STRIPE W/3004PSI	N/A	1	78	CONDUIT *(TWO FEET REQUIRED)	32-0486	1
-	DECAL - STRIPE W/2400PSI	N/A	1	79	CONDUIT ELBOW	32-0487	2
27	DECAL - LOGO	N/A	1	80	MOTOR 8HP	2-0211	1
28	DECAL - MADE IN USA	34-3553	1	81	GASKET	26-0314	1
29	HOSE ASSEMBLY	851-0338	1	82	DECAL - DO NOT SPRAY (SEE 71-1044)	N/A	1
30	QUICK CONNECT	17-0006	1	83	KEY	43-0174	1
31	HOSE	15-0209	1	84	LOCKNUT	30-0159	6
32	QUICK CONNECT SOCKET	17-0004	1	85	WASHER	28-0023	11
33	O-RING	25-0123	1	86	BRACKET	13-0003A18	1
34	BUSHING	9-0017	1	87	BOLT	27-0118	6
35	BELT (2405)	11-0036	2	88	LOCKNUT	30-0161	4
-	BELT (3004)	11-0017	2	89	WASHER	28-0030	8
36	SHEAVE	10-0035	1	90	BOLT	27-8471	4
37	BOLT	27-0067	8	91	BOLT	27-0166	4
38	WASHER	28-0003	16	92	LOCKWASHER	29-0054	4
39	LOCKNUT	30-0157	14	93	PUMP BRACKET	5-0101A18	1
40	HOSE *(TWO FEET REQUIRED)	15-0007	2	94	BOLT	27-0576	1
41	HOSE CLAMP	42-0011	2	95	ELBOW	24-0105	1
42	NIPPLE	23-0012	1	96	RELIEF VALVE	22-0005	1
43	FILTER	19-0206	1	97	CROSS	23-0071	1
44	HIGH PRESSURE HOSE	15-0024	1	98	HOSE BARB	23-0418	1
45	ELBOW	24-0006	1	99	PUMP	3-0202	1
46	UNLOADER	8-0032	1	100	BARB	23-0045	1
47	NIPPLE	24-0031	1	-	DECAL SET	71-1044	1

*MUST ORDER IN ONE FOOT LENGTHS

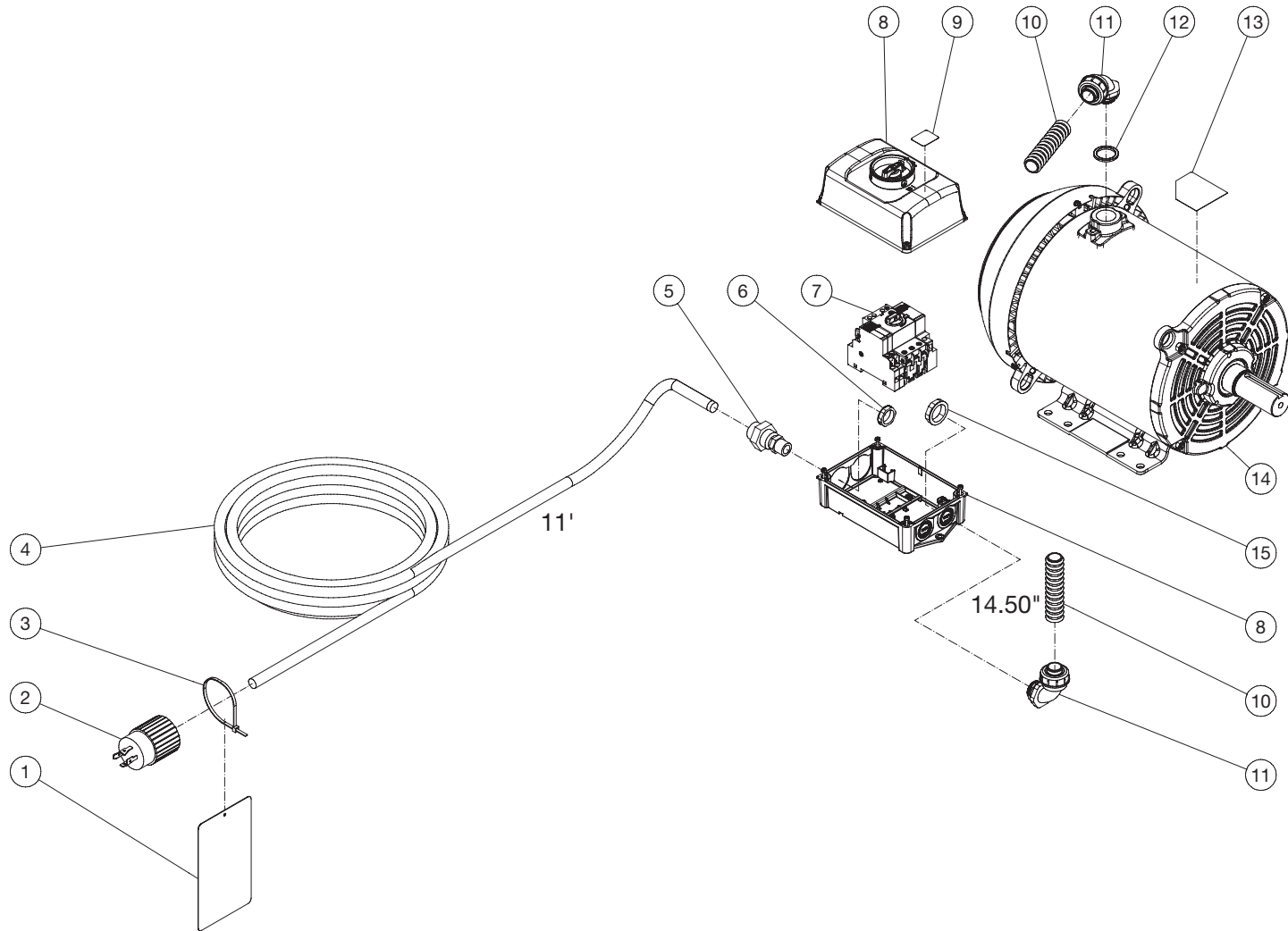
MOTOR ASSEMBLY (851-0398)



851-0398 110322ADR

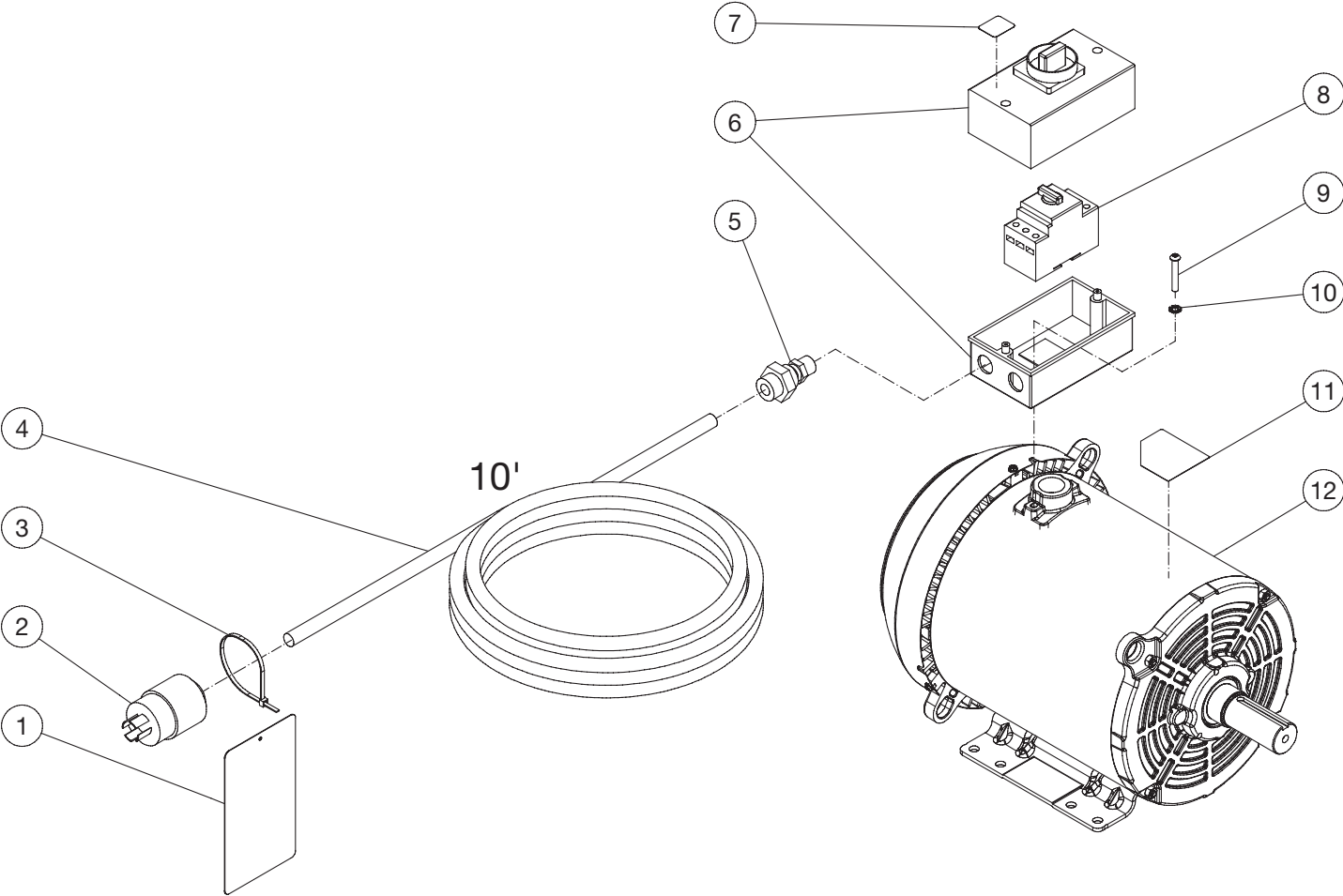
MOTOR ASSEMBLY			
ITEM	DESCRIPTION	PART #	QTY
1	TAG - WARNING RISK OF ELECTROCUTION	N/A	1
2	PLUG	32-0012	1
-	PLUG (CX-0003)	32-0117	1
3	CABLE TIE	33-0022	1
4	CORD *(TEN FEET REQUIRED)	32-0021	1
-	CORD (CX-0003)*(TEN FEET REQUIRED)	32-0025	1
5	BUSHING	32-0040	1
6	ELECTRICAL LOCKNUT	32-0292	1
7	SWITCH	32-1232	1
8	ACTUATOR	32-1228	1
9	DECAL - DO NOT SPRAY (SEE 71-1044)	N/A	1
10	DECAL - WARNING REMOVAL OF COVER (SEE 71-1044)	N/A	1
11	MOTOR	N/A	1
-	STARTER - 10-16 AMPS (CX-0003)	32-1045	1
-	CRIMPED WIRE SPLICE	N/A	1
-	TERMINAL - 10GA #10 FORK	N/A	1
*MUST ORDER IN ONE FOOT LENGTHS			

MOTOR ASSEMBLY (851-0399) (AFTER SERIAL #11400525)



851-0399 110822 JJR			
MOTOR ASSEMBLY			
ITEM	DESCRIPTION	PART #	QTY
1	TAG - WARNING RISK OF ELECTROCUTION	N/A	1
2	PLUG	32-0037	1
3	CABLE TIE	33-0022	1
4	CORD *(ELEVEN FEET REQUIRED)	32-0023	1
5	STRAIN RELIEF	32-0013	1
6	ELECTRICAL LOCKNUT	32-0108	1
7	STARTER	32-1349	1
8	STARTER ENCLOSURE	32-1350	1
9	DECAL - WARNING REMOVAL OF COVER (SEE 71-1044)	N/A	1
10	CONDUIT *(TWO FEET REQUIRED)	32-0486	1
11	CONDUIT ELBOW	32-0487	2
12	GASKET	26-0314	1
13	DECAL - DO NOT SPRAY (SEE 71-1044)	N/A	1
14	MOTOR 8HP	2-0211	1
15	ELECTRICAL LOCKNUT	32-0292	1
-	DECAL SET-CW 2400/3000 ELEC	71-1044	1
*MUST ORDER IN ONE FOOT LENGTHS			

MOTOR ASSEMBLY (851-0422) (CX-0003 OPTION) (460V) (AFTER SERIAL #11326874)



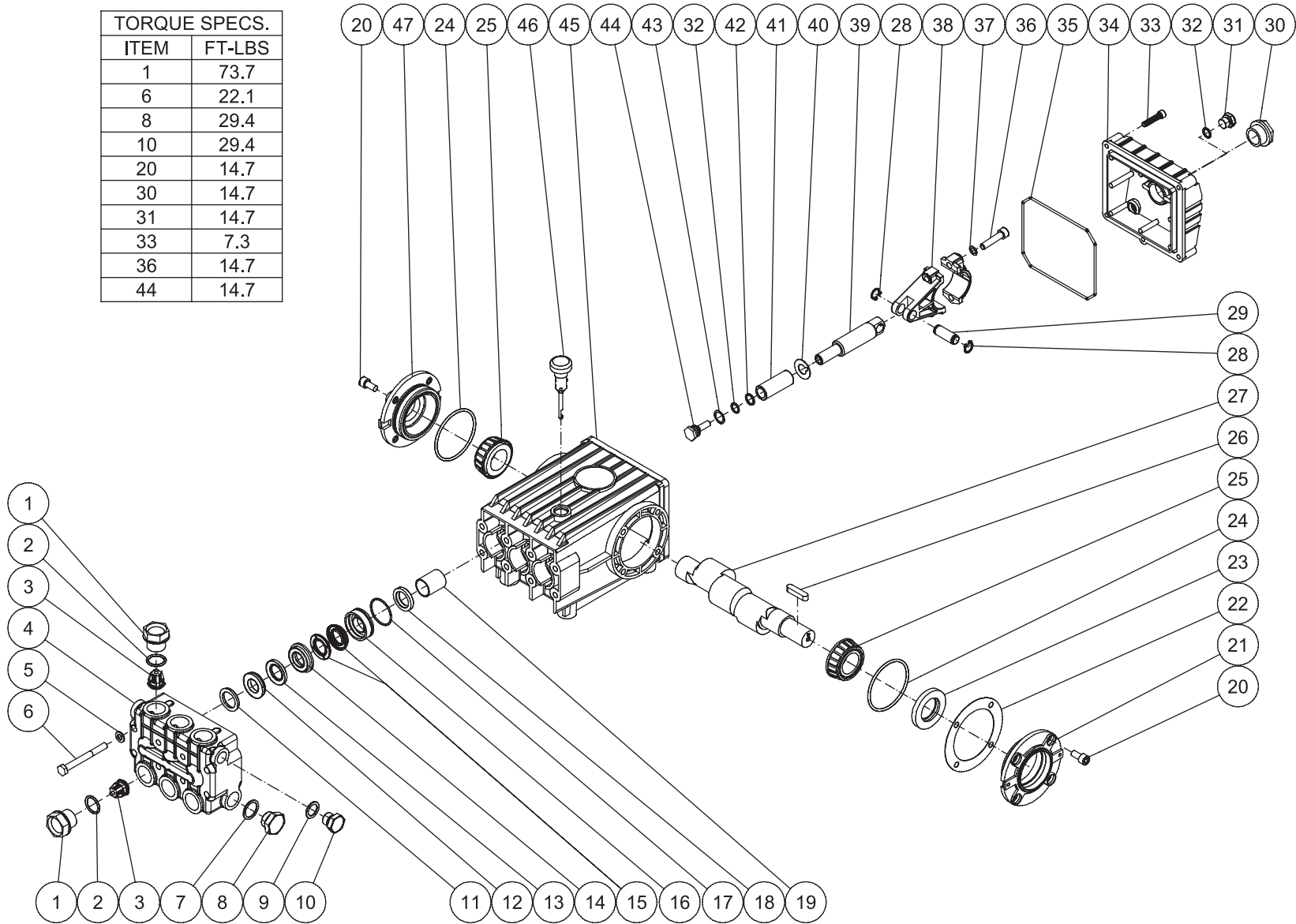
851-0422 110221 SMS

MOTOR ASSEMBLY

ITEM	DESCRIPTION	PART #	QTY
1	TAG - WARNING RISK OF ELECTROCUTION	N/A	1
2	PLUG	32-0117	1
3	CABLE TIE	33-0022	1
4	CORD *(TEN FEET REQUIRED)	32-0025	1
5	STRAIN RELIEF	32-0013	1
6	STARTER BOX	N/A	1
7	DECAL - WARNING REMOVAL OF COVER (SEE 71-1044)	N/A	1
8	STARTER	32-1045	1
9	BOLT	27-1300	2
10	LOCKWASHER	28-1028	2
11	DECAL - DO NOT SPRAY (SEE 71-1044)	N/A	1
12	MOTOR 8HP	2-0211	1
-	CRIMPED WIRE SPLICE	32-0359	1
-	DECAL SET-CW 2400/3000 ELEC	71-1044	1
*MUST ORDER IN ONE FOOT LENGTHS			

PUMP ASSEMBLY (3-0202) (AFTER SERIAL #10375000)

TORQUE SPECS.	
ITEM	FT-LBS
1	73.7
6	22.1
8	29.4
10	29.4
20	14.7
30	14.7
31	14.7
33	7.3
36	14.7
44	14.7

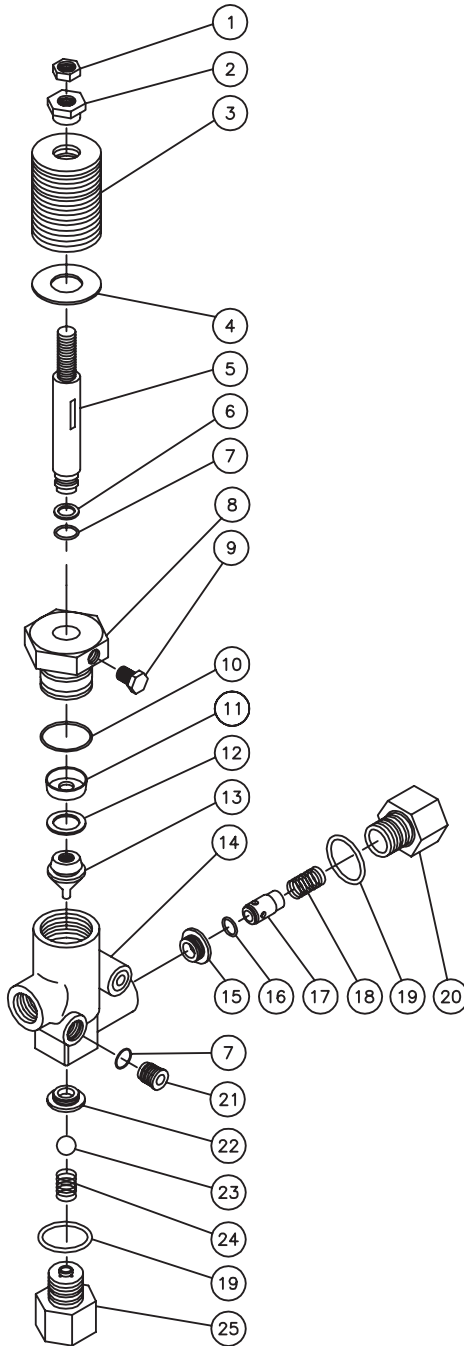


3-0202_3-0203 042914 CH

PUMP ASSEMBLY							
ITEM	DESCRIPTION	PART #	QTY	ITEM	DESCRIPTION	PART #	QTY
1	VALVE CAP	46-0889	6	25	BEARING	48-0012	2
2	O-RING	25-0012	6	26	KEY	43-0048	1
3	VALVE (SEE KIT 70-0009)	22-0056	6	27	CRANKSHAFT	46-0050	1
4	MANIFOLD	46-0890	1	28	RETAINING RING	46-0103	6
5	WASHER	28-1039	8	29	CONNECTING ROD PIN	43-0032	3
6	BOLT	27-8185	8	30	OIL LEVEL INDICATOR	46-0114	1
7	WASHER	28-1038	2	31	PLUG	39-0017	1
8	PLUG	39-0019	2	32	O-RING	25-0014	4
9	WASHER	28-1002	2	33	BOLT	27-8404	5
10	PLUG	39-0018	2	34	CRANKCASE OPEN COVER	46-0295	1
11	HEAD RING (SEE KIT 70-0030 AND 852-0122)	70-0030	3	35	O-RING	25-0339	1
12	V-PACKING SUPPORT (SEE KIT 70-0147 AND 852-0122)	26-0098	3	36	BOLT	27-8435	6
13	O-RING (SEE KIT 70-0147 AND 70-0148 AND 852-0122)	25-0207	3	37	LOCKWASHER	29-0154	6
14	HIGH PRESSURE INTERMEDIATE SEAL RETAINER (SEE KIT 70-0148)	46-0659	3	38	CONNECTING ROD	46-0051	3
15	PRESSURE SEAL (SEE KIT 70-0147 AND 852-0122)	26-0197	3	39	PISTON ROD	46-0056	3
16	LOW PRESSURE SEAL RETAINER	46-0057	3	40	SLINGER WASHER	46-0146	3
17	O-RING (SEE KIT 852-0122)	25-0015	3	41	PLUNGER	46-0052	3
18	OIL SEAL	26-0047	3	42	BACK-UP RING	46-0109	3
19	BUSHING	9-0029	3	43	WASHER	28-0400	3
20	BOLT	27-8431	8	44	NUT / PISTON	46-0069	3
21	CRANKCASE COVER	46-0296	1	45	CRANKCASE	46-0047	1
22	SHIM	46-0113	1	46	OIL DIP STICK	46-0144	1
23	OIL SEAL	26-0049	1	47	CRANKCASE COVER	46-0336	1
24	O-RING	25-0013	2				

REPLACEMENT KITS				
KIT#	DESCRIPTION	ITEMS	# OF ASSEMBLIES	# OF CYLINDERS
70-0009	VALVES	3	6	3
70-0030	HEAD RING	11	3	3
70-0147	V-PACKING	12, 13, 15	3	3
70-0148	INTERMEDIATE RETAINER	13, 14	3	3
852-0122	V-PACKING ASSY	11-13, 15, 17	3	3

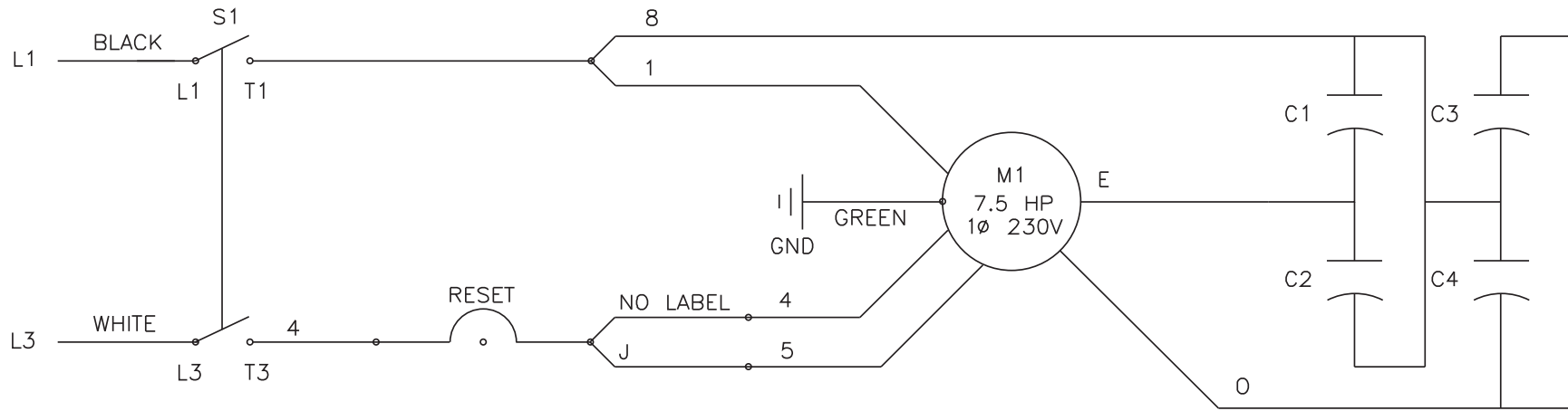
UNLOADER ASSEMBLY (8-0032)



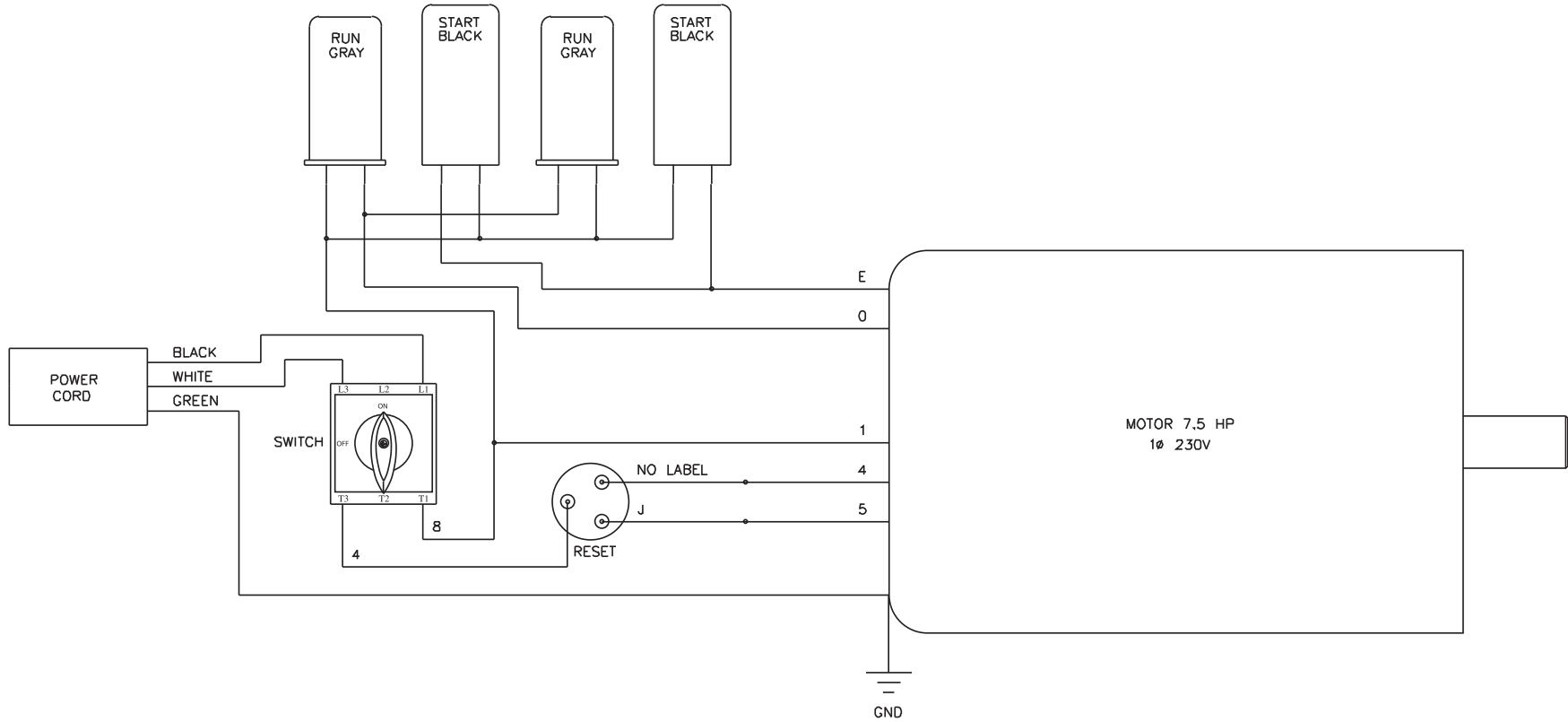
8-0032 061113 MLK			
UNLOADER ASSEMBLY (8-0032)			
REF.#	DESCRIPTION	PART #	QTY.
1	LOCKNUT	30-3058	1
2	ADJUSTING NUT	8-0089	1
3	SPRING WASHERS - ORANGE	8-0009	15
4	WASHER	28-0250	1
5	VALVE STEM	8-0037	1
6	BACKUP RING (SEE KIT 70-0044)	8-0038	1
7	O-RING (SEE KIT 70-0044)	25-0009	5
8	VALVE CAP	8-0036	1
9	SET SCREW	8-0084	1
10	O-RING (SEE KIT 70-0044)	25-0008	1
11	CUP (SEE KIT 70-0044)	8-0034	1
12	BACK-UP RING (SEE KIT 70-0044)	8-0040	1
13	PISTON	8-0039	1
14	VALVE BODY	8-0164	1
15	OUTLET SEAT	8-0006	1
16	O-RING (SEE KIT 70-0044)	25-0011	1
17	OUTLET VALVE	8-0004	1
18	SPRING	49-0016	1
19	O-RING (SEE KIT 70-0044)	25-0010	2
20	OUTLET RETAINER	8-0003	1
21	BRASS PLUG	8-0011	4
22	VALVE SEAT	8-0005	1
23	BALL	8-0041	1
24	SPRING	49-0015	1
25	INLET RETAINER	8-0165	1

REPLACEMENT KITS			
KIT#	DESCRIPTION	ITEMS	QTY
70-0044	UNLOADER KIT	6, 7, 10-12, 16, 19	2, 5, 1, 1, 1, 1, 2

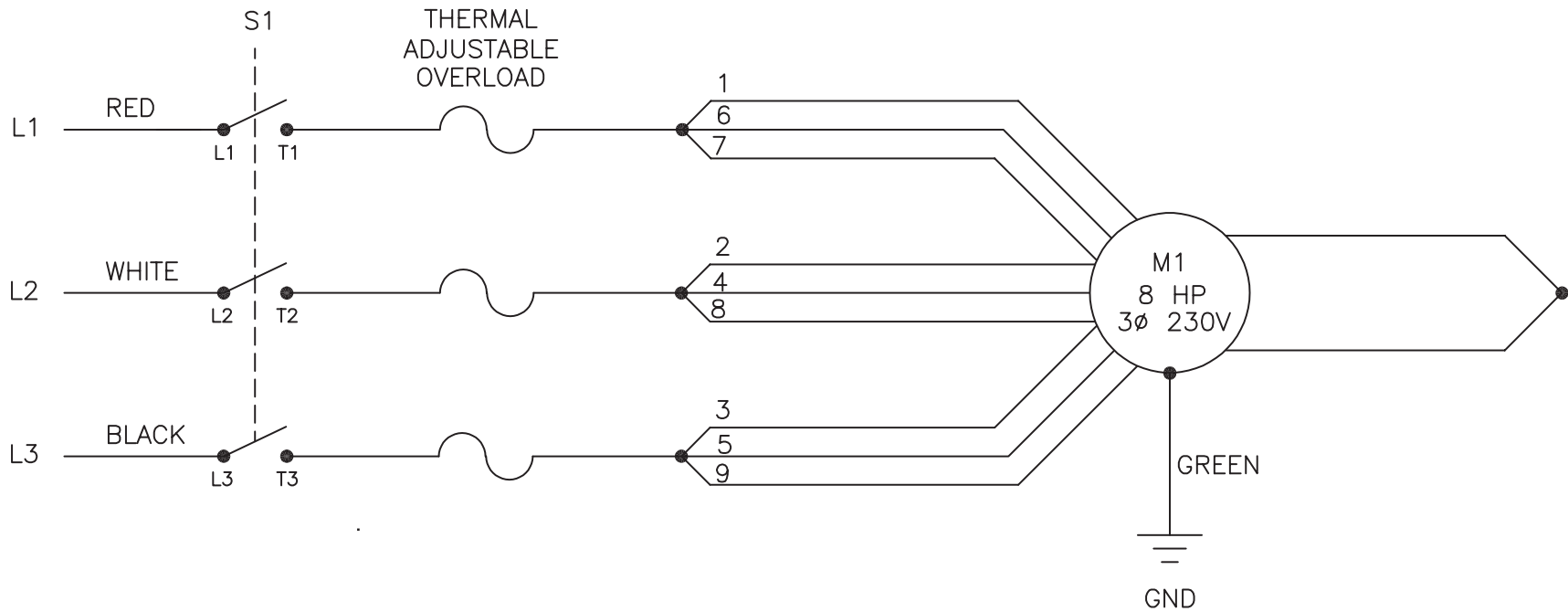
WIRING SCHEMATIC FOR 2405/3004 (230 VOLT/SINGLE PHASE)



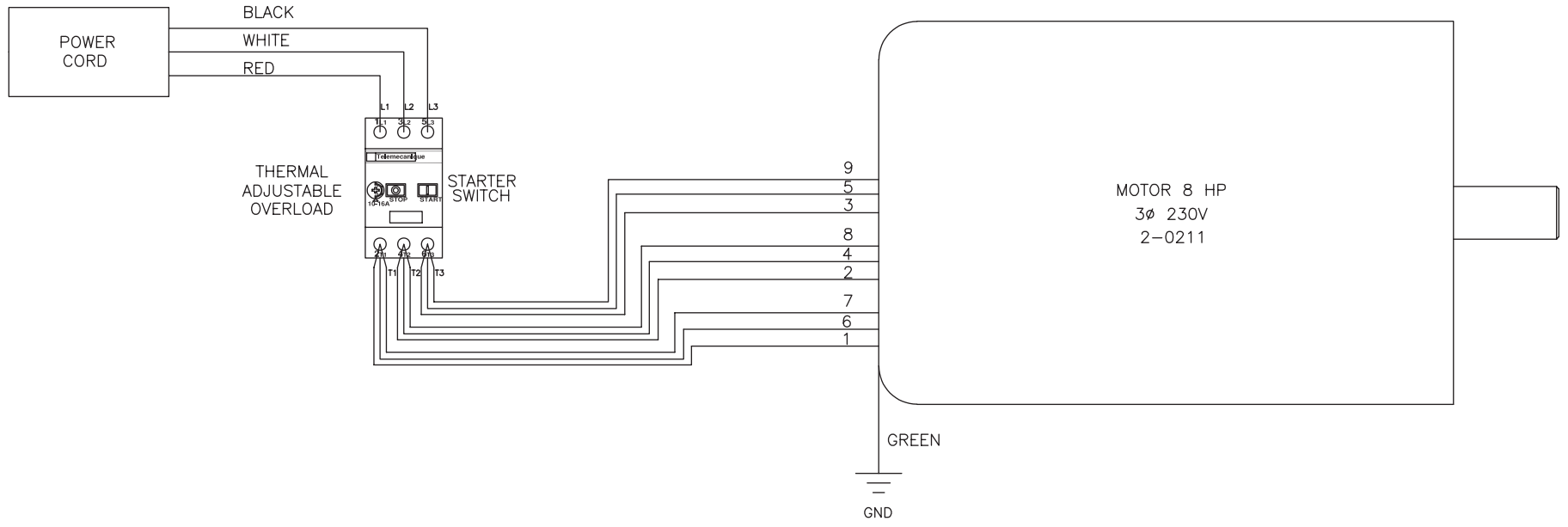
WIRING DIAGRAM FOR 2405/3004 (230 VOLT/SINGLE PHASE)



WIRING SCHEMATIC FOR 2405/3004 (230 VOLT/THREE PHASE) (AFTER SERIAL #11326874)

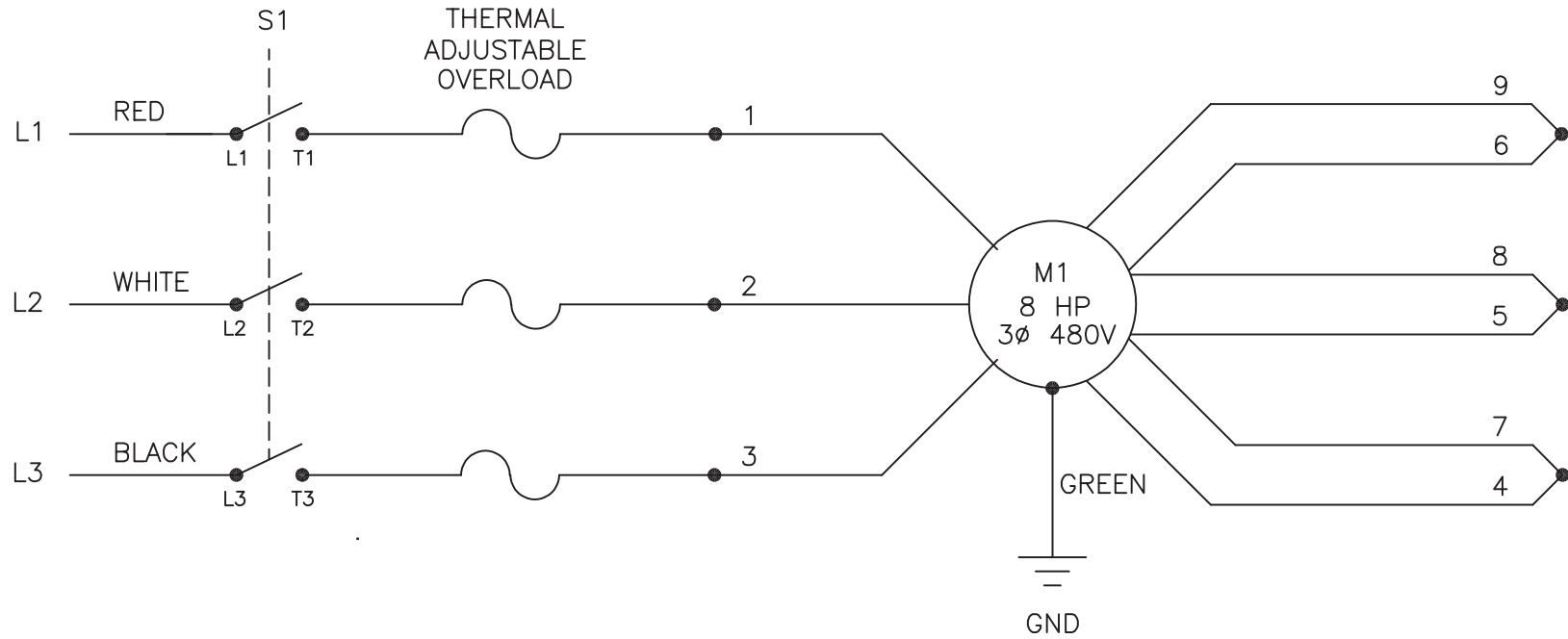


WIRING DIAGRAM FOR 2405/3004 (230 VOLT/THREE PHASE) (AFTER SERIAL #11326874)



WIRING SCHEMATIC FOR 2405/3004 (CX-0003 OPTION) (460 VOLT/THREE PHASE) (AFTER SERIAL #11326874)

SCHEMATIC



WIRING DIAGRAM FOR 2405/3004 (CX-0003 OPTION) (460 VOLT/THREE PHASE) (AFTER SERIAL #11326874)

