



PARTS LIST FOR  
***CBA-4004-1MAH***  
***CBA-4004-1MAK***  
***CBA-4004-1MAS***

|                      |                                                |
|----------------------|------------------------------------------------|
| Engine Oil Grade:    | SAE 10W-30                                     |
| Engine Oil Capacity: | Honda 37 oz.<br>Kohler 37 oz.<br>Subaru 40 oz. |
| Pump Oil Grade:      | Mi-T-M Pump Oil #AW-4085-0016                  |
| Pump Oil Capacity:   | 18.5 oz.                                       |
| Nozzle Size:         | 3.5                                            |

This Parts Listing has been compiled for your benefit. You can be assured your Mi-T-M Cold Water Pressure Washer was constructed and designed with quality and performance in mind using over 25 years experience in the pressure washer business. Each component has been rigorously tested to insure the highest level of acceptance.

The contents of this Parts Listing are based on the latest product information available at the time of publication. Mi-T-M reserves the right to make changes in price, color, materials, equipment, specifications or models at any time without notice.

### **WARNING**

THIS IS A PROFESSIONAL HIGH PRESSURE, COLD WATER PRESSURE WASHER. CAUTION SHOULD BE OBSERVED WHEN USING OR REPAIRING THIS UNIT! READ AND FOLLOW THE SAFETY WARNINGS LISTED BELOW BEFORE ATTEMPTING ANY REPAIRS ON THIS PRESSURE WASHER!

### **SAFETY WARNINGS**

1. NEVER alter or modify the equipment. Be sure any accessory items and system components being used will withstand the pressure developed. Use only genuine Mi-T-M parts for repair of your pressure washer. Failure to do so can cause hazardous operating conditions and will VOID warranty.
2. NEVER make adjustments on machinery while the unit is connected to the engine without first removing the ignition cables from the spark plugs. Turning over the machinery by hand during adjustment or cleaning might start the machinery, causing serious injury to the operator.
3. Know how to stop and bleed pressures quickly. Be thoroughly familiar with controls.
4. Before servicing the unit, turn unit off, relieve the water pressure and allow the unit to cool down. Do not make repairs while the unit is running. Service in a clean, dry, flat area.
5. After testing the machine, DO NOT leave the pressurized unit unattended. Shut off the unit and release trapped pressure before leaving.

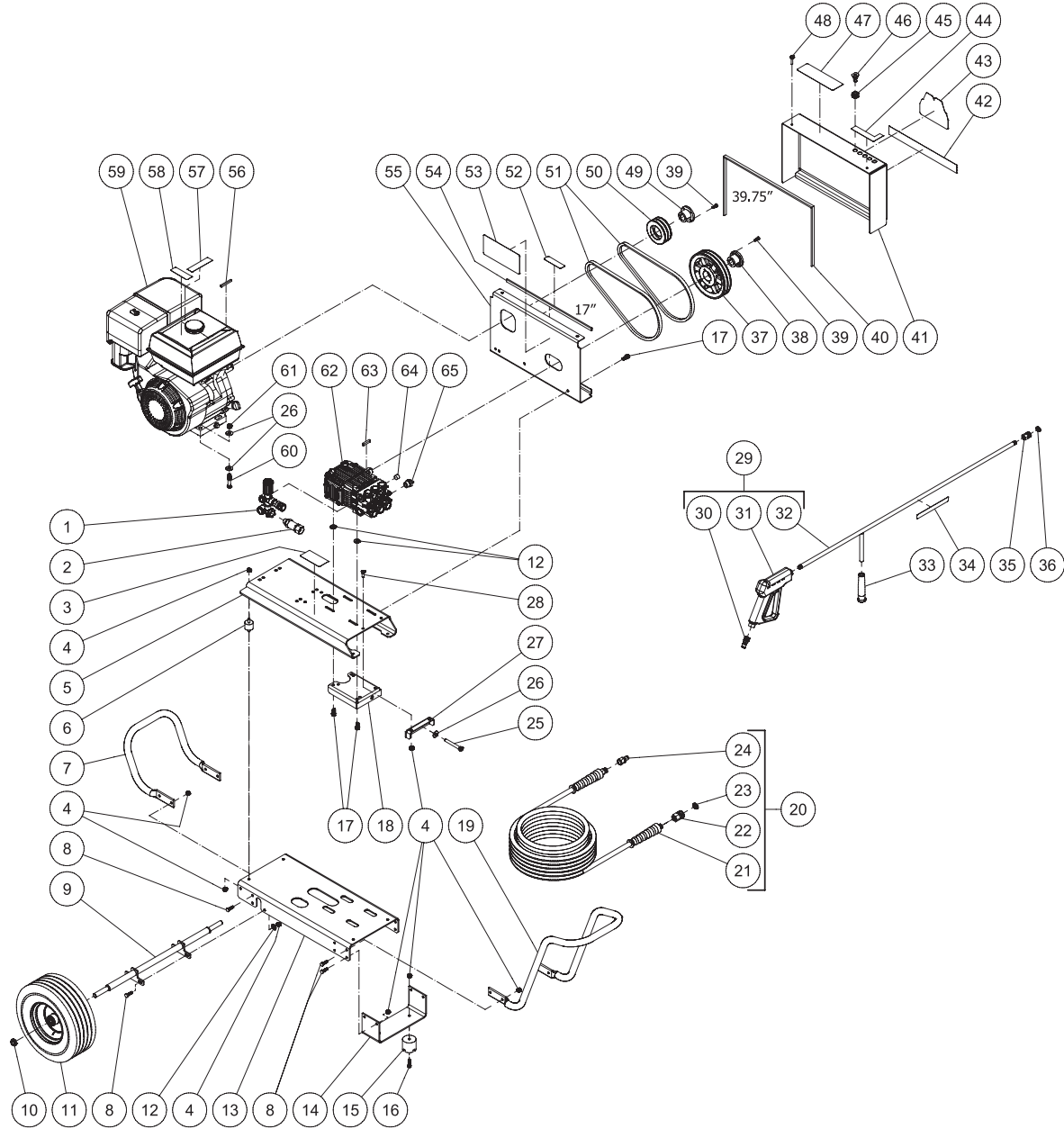
# **Table of Contents**

|                                         |          |
|-----------------------------------------|----------|
| <b>SPECIFICATIONS.....</b>              | <b>3</b> |
| <b>FRAME ASSEMBLY .....</b>             | <b>4</b> |
| <b>PUMP ASSEMBLY (3-0308) .....</b>     | <b>6</b> |
| <b>UNLOADER ASSEMBLY (8-0631) .....</b> | <b>8</b> |

## SPECIFICATIONS

| MODEL NUMBER                    | CBA-4004-1MAH                                      | CBA-4004-1MAK | CBA-4004-1MAS                           |
|---------------------------------|----------------------------------------------------|---------------|-----------------------------------------|
| Operating Pressure (PSI/Bar):   | 4000 / 275.8                                       |               |                                         |
| High Pressure Nozzle:           | 3.5                                                |               |                                         |
| Water Volume (GPM/lpm):         | 3.4 / 12.8                                         |               |                                         |
| Engine:                         | Honda                                              | Kohler        | Subaru                                  |
| Model                           | GX390                                              | CH440         | EX40                                    |
| Engine Type                     | 4 Stroke, Overhead Valve, Single Cylinder          |               | 4 Stroke, Overhead Cam, Single Cylinder |
| Oil Type                        | SAE10W-30                                          |               |                                         |
| Oil Capacity (oz./liters)       | 37 / 1.1                                           | 44 / 1.3      | 40.5 / 1.2                              |
| Low Oil Protection              | Oil Alert™                                         | Oil Sensor    |                                         |
| Fuel Type                       | Unleaded Gasoline 86 Octane Minimum                |               |                                         |
| Fuel Capacity (gallon/ liters)  | 1.61 / 6.1                                         | 1.85 / 7.0    | 1.85 / 7.0                              |
| Starting                        | Recoil                                             |               |                                         |
| Maximum No Load RPM             | 3600                                               |               |                                         |
| Pump:                           | Belt Driven, Oil Bath, Triplex Piston              |               |                                         |
| Oil Type                        | Mi-T-M Pump Oil #AW-4085-0016                      |               |                                         |
| Oil Capacity (oz./liters)       | 18.5 / .55                                         |               |                                         |
| Plungers                        | Ceramic                                            |               |                                         |
| Manifold                        | Forged Brass                                       |               |                                         |
| Valves                          | Stainless Steel                                    |               |                                         |
| Unloader                        | Adjustable                                         |               |                                         |
| Thermal Relief Valve            | Relieves heated water during unloader bypass stage |               |                                         |
| Unit Net Weight (Lbs/kg)        | 150 / 68                                           |               |                                         |
| Unit Shipping Weight (Lbs/kg)   | 204 / 92.5                                         |               |                                         |
| Unit Net Dimension (In/cm)      | 46.5L x 28W x 27.5H /118L x 71W x 70H              |               |                                         |
| Unit Shipping Dimension (In/cm) | 48L x 30W x 34H /122L x 76W x 86H                  |               |                                         |

# FRAME ASSEMBLY



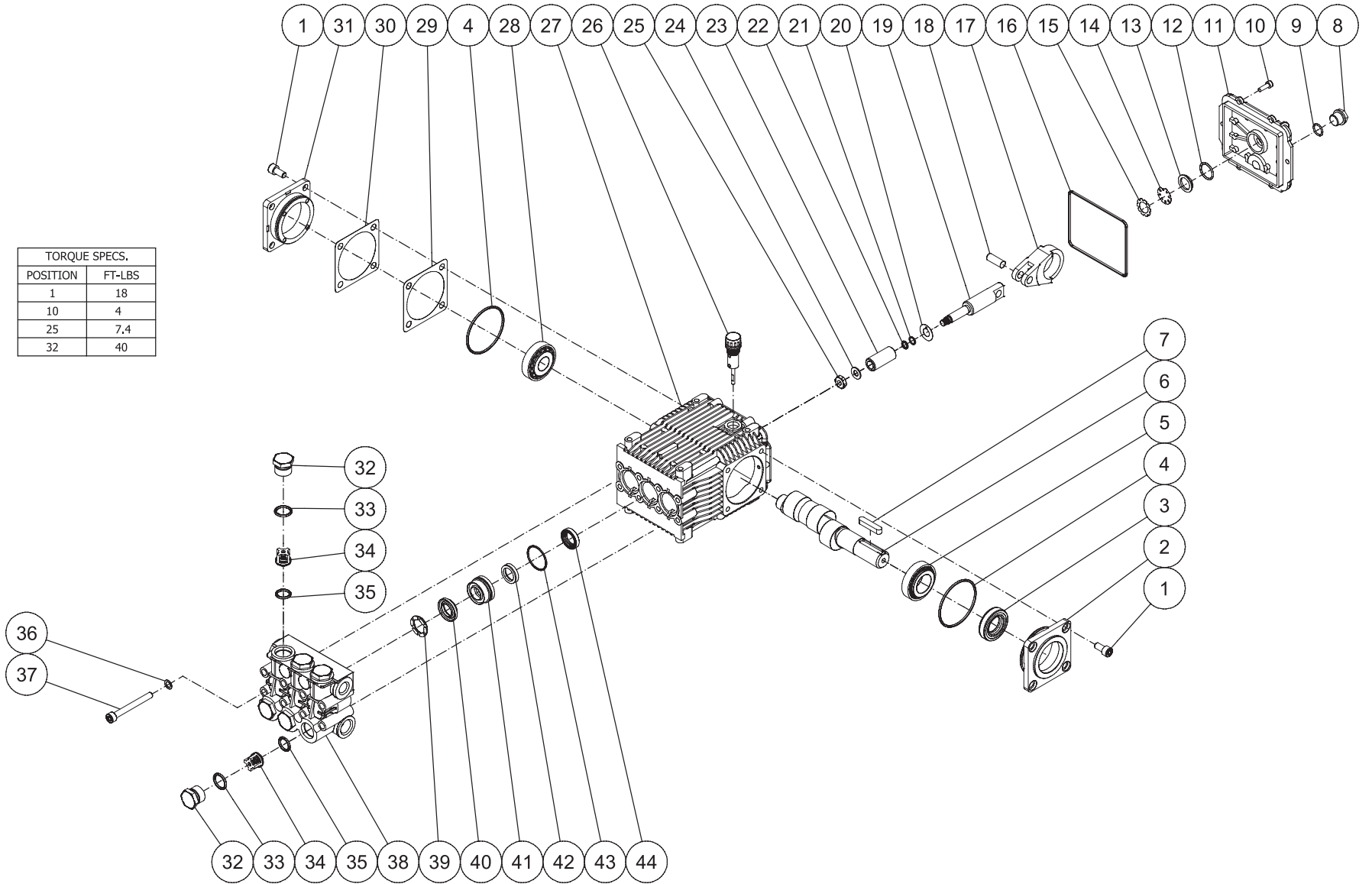
CBA-4004-1MAH\_K\_S-052813 KMD

## FRAME ASSEMBLY

| ITEM | DESCRIPTION                             | PART #   | QTY | ITEM                            | DESCRIPTION                         | PART #  | QTY |
|------|-----------------------------------------|----------|-----|---------------------------------|-------------------------------------|---------|-----|
| 1    | UNLOADER ASSY W/ QC & BANJO BOLTS       | 8-0631   | 1   | 37                              | SHEAVE                              | 10-0035 | 1   |
| 2    | FILTER                                  | 19-0206  | 1   | 38                              | BUSHING                             | 9-0017  | 1   |
| 3    | DECAL- SILVER STICKER                   | 34-0075  | 1   | 39                              | BOLT                                | 27-0015 | 4   |
| 4    | LOCKNUT                                 | 30-0157  | 28  | 40                              | EDGING *(FOUR FEET REQUIRED)        | 33-0433 | 1   |
| 5    | ISOLATION PLATE                         | 5-0223   | 1   | 41                              | BELTGUARD FRONT                     | 6-0107  | 1   |
| 6    | ISOLATOR                                | 14-0097  | 4   | 42                              | DECAL - STRIPE (SEE 71-1040)        | N/A     | 1   |
| 7    | HANDLE                                  | 7-0183   | 1   | 43                              | DECAL - Mi-T-M (SEE 71-1040)        | N/A     | 1   |
| 8    | BOLT                                    | 27-0067  | 16  | 44                              | DECAL - NOZZLE (SEE 71-1040)        | N/A     | 1   |
| 9    | AXLE                                    | 20-0864  | 1   | 45                              | GROMMET                             | 33-0001 | 5   |
| 10   | LOCKNUT                                 | 30-0117  | 2   | 46                              | NOZZLE 00035 QC                     | 18-0392 | 1   |
| 11   | WHEEL                                   | 14-0127  | 2   | -                               | NOZZLE 15035 QC                     | 18-0393 | 1   |
| 12   | WASHER                                  | 28-0022  | 8   | -                               | NOZZLE 25035 QC                     | 18-0395 | 1   |
| 13   | BASEPLATE                               | 5-0222   | 1   | -                               | NOZZLE 40035 QC                     | 18-0396 | 1   |
| 14   | BRACKET                                 | 56-0054  | 1   | 47                              | DECAL - OPERATION (SEE 71-1040)     | N/A     | 1   |
| 15   | ISOLATOR                                | 14-0008  | 2   | 48                              | BOLT                                | 27-8898 | 2   |
| 16   | BOLT                                    | 27-0068  | 2   | 49                              | BUSHING                             | 9-0005  | 1   |
| 17   | BOLT                                    | 27-9524  | 7   | 50                              | SHEAVE                              | 10-0074 | 1   |
| 18   | TIGHTENER BRACKET                       | 21-0220  | 1   | 51                              | BELT                                | 11-0031 | 2   |
| 19   | HANDLE                                  | 7-018201 | 1   | 52                              | DECAL - WARNING (SEE 71-1040)       | N/A     | 1   |
| 20   | HOSE ASSEMBLY (INC. 21-24)              | 851-0338 | 1   | 53                              | DECAL - WARNING (SEE 71-1040)       | N/A     | 1   |
| 21   | HOSE                                    | 15-0209  | 1   | 54                              | EDGING *(TWO FEET REQUIRED)         | 33-0433 | 1   |
| 22   | QC SOCKET                               | 17-0004  | 1   | 55                              | BELTGUARD BACK                      | 6-0106  | 1   |
| 23   | O-RING                                  | 25-0123  | 1   | 56                              | KEY                                 | 43-0078 | 1   |
| 24   | QUICK CONNECT                           | 17-0006  | 1   | 57                              | DECAL - RISK OF BURNS (SEE 71-1040) | N/A     | 1   |
| 25   | BOLT                                    | 27-0576  | 1   | 58                              | DECAL - RISK OF FIRE (SEE 71-1040)  | N/A     | 1   |
| 26   | WASHER                                  | 28-0023  | 9   | 59                              | ENGINE - HONDA                      | 1-0086  | 1   |
| 27   | TIGHTENER BRACKET                       | 21-0218  | 1   | -                               | ENGINE - KOHLER                     | 1-0208  | 1   |
| 28   | BOLT                                    | 27-0066  | 2   | -                               | ENGINE - SUBARU                     | 1-0176  | 1   |
| 29   | GUN ASSEMBLY (INC. 30-32)               | 851-0371 | 1   | 60                              | BOLT                                | 27-0121 | 4   |
| 30   | QUICK CONNECT                           | 17-0005  | 1   | 61                              | LOCKNUT                             | 30-0159 | 4   |
| 31   | GUN                                     | 16-0001  | 1   | 62                              | PUMP                                | 3-0308  | 1   |
| 32   | WAND (INC GRIP & QC)                    | 16-0439  | 1   | 63                              | PUMP KEY                            | 43-0091 | 1   |
| 33   | GRIP                                    | 7-0002   | 1   | 64                              | PLUG                                | 23-0244 | 1   |
| 34   | DECAL - RISK OF INJECTION (SEE 71-1040) | N/A      | 1   | 65                              | RELIEF VALVE                        | 22-0005 | 1   |
| 35   | QUICK CONNECT                           | 17-0001  | 1   | -                               | DECAL SET                           | 71-1040 | 1   |
| 36   | O-RING                                  | 25-0122  | 1   | *MUST ORDER IN ONE FOOT LENGTHS |                                     |         |     |

# PUMP ASSEMBLY (3-0308)

| TORQUE SPECS. |        |
|---------------|--------|
| POSITION      | FT-LBS |
| 1             | 18     |
| 10            | 4      |
| 25            | 7.4    |
| 32            | 40     |



3-0308-052113-JPS

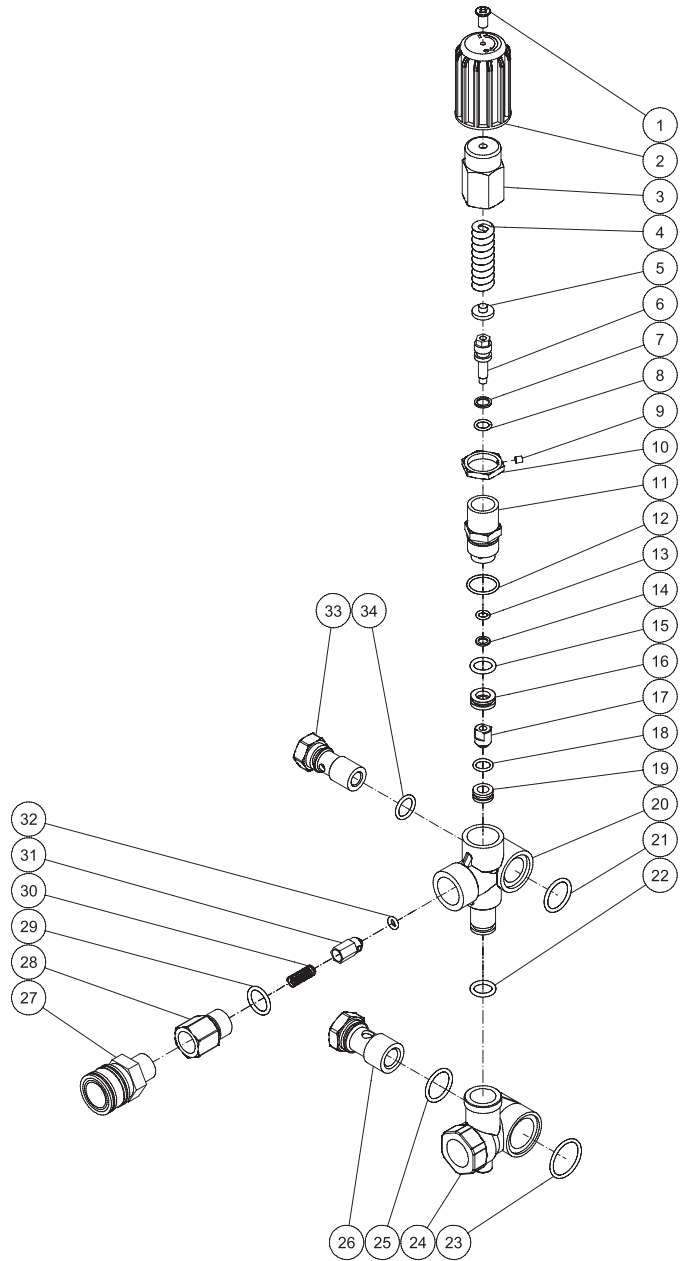
## PUMP ASSEMBLY

| ITEM | DESCRIPTION                      | Mi-T-M # | QTY | ITEM | DESCRIPTION                         | Mi-T-M # | QTY |
|------|----------------------------------|----------|-----|------|-------------------------------------|----------|-----|
| 1    | BOLT                             | 27-8884  | 8   | 24   | WASHER/GASKET (SEE KIT 70-0352)     | 26-0191  | 3   |
| 2    | SHAFT COVER                      | 46-0691  | 1   | 25   | NUT (SEE KIT 70-0352)               | 30-6020  | 3   |
| 3    | OIL SEAL (SEE KIT 70-0321)       | 26-0188  | 1   | 26   | OIL DIPSTICK                        | 39-0090  | 1   |
| 4    | O-RING (SEE KIT 70-0321)         | 25-0380  | 2   | 27   | CRANKCASE                           | 46-1198  | 1   |
| 5    | ROLLER BEARING                   | 48-0061  | 1   | 28   | BEARING                             | 48-0072  | 1   |
| 6    | CRANKSHAFT                       | 46-1103  | 1   | 29   | SHIM                                | 46-0705  | 1   |
| 7    | PUMP KEY                         | 43-0091  | 1   | 30   | SHIM                                | 46-0704  | 1   |
| 8    | PLUG                             | 39-0086  | 1   | 31   | BEARING CAP/SUPPORT                 | 46-0703  | 1   |
| 9    | O-RING                           | 25-0325  | 1   | 32   | VALVE CAP                           | 39-0095  | 6   |
| 10   | BOLT                             | 27-8885  | 6   | 33   | O-RING                              | 25-0160  | 6   |
| 11   | CRANKCASE COVER                  | 46-0719  | 1   | 34   | VALVE ASSEMBLY (SEE KIT 70-0319)    | 46-0937  | 6   |
| 12   | O-RING                           | 25-0370  | 1   | 35   | O-RING (SEE KIT 70-0319)            | 25-0386  | 6   |
| 13   | OIL SIGHT GLASS                  | 46-0670  | 1   | 35   | O-RING                              | 25-0386  | 6   |
| 14   | OIL REFLECTOR                    | 46-0824  | 1   | 36   | LOCKWASHER                          | 29-0154  | 8   |
| 15   | SPRING RETAINER                  | 46-0671  | 1   | 37   | BOLT                                | 27-8440  | 8   |
| 16   | O-RING (SEE KIT 70-0321)         | 25-0398  | 1   | 38   | MANIFOLD                            | 46-1186  | 1   |
| 17   | CONNECTING ROD                   | 46-0896  | 3   | 39   | SUPPROT RING (SEE KIT 70-0178)      | 46-0710  | 3   |
| 18   | PISTON PIN                       | 46-0698  | 3   | 40   | V PACKING (SEE KIT 70-0177)         | 46-0709  | 3   |
| 19   | PLUNGER ROD                      | 46-0699  | 3   | 41   | PACKING RETAINER                    | 46-0708  | 3   |
| 20   | SLINGER WASHER (SEE KIT 70-0352) | 46-0700  | 3   | 42   | LOW PRESSURE SEAL (SEE KIT 70-0177) | 46-0707  | 3   |
| 21   | O-RING (SEE KIT 70-0352)         | 25-0404  | 3   | 43   | O-RING (SEE KIT 70-0177)            | 25-0384  | 3   |
| 22   | O-RING (SEE KIT 70-0352)         | 25-0415  | 3   | 44   | OIL SEAL (SEE KIT 70-0321)          | 46-9031  | 1   |
| 23   | PISTON (SEE KIT 70-0352)         | 46-0701  | 3   |      |                                     |          |     |

## REPLACEMENT KITS

| Mi-T-M KIT # | DESCRIPTION               | ITEMS        | # OF ASSEMBLIES | # OF CYLINDERS |
|--------------|---------------------------|--------------|-----------------|----------------|
| 70-0321      | KIT - OIL SEALS           | 3, 4, 16, 44 | 1, 1, 1, 3      | 3              |
| 70-0352      | KIT - PISTONS             | 20-25        | 3               | 3              |
| 70-0177      | KIT - HIGH PRESSURE SEALS | 40, 42, 43   | 3               | 3              |
| 70-0178      | KIT - SUPPORT RINGS       | 39           | 3               | 3              |
| 70-0319      | KIT - VALVES              | 34, 35       | 6               | 3              |

# UNLOADER ASSEMBLY (8-0631)





| UNLOADER ASSEMBLY |                                        |         |     |
|-------------------|----------------------------------------|---------|-----|
| ITEM              | DESCRIPTION                            | PART #  | QTY |
| 1                 | SCREW (SEE KIT 70-0647)                | 27-2772 | 1   |
| 2                 | KNOB (SEE KIT 70-0647)                 | 7-0250  | 1   |
| 3                 | KNOB (SEE KIT 70-0647)                 | SEE KIT | 1   |
| 4                 | SPRING (SEE KIT 70-0647)               | SEE KIT | 1   |
| 5                 | SPRING SEAT (SEE KIT 70-0647)          | SEE KIT | 1   |
| 6                 | VALVE ROD (SEE KIT 70-0647)            | SEE KIT | 1   |
| 7                 | SUPPORT RING (SEE KIT 70-0647)         | SEE KIT | 1   |
| 8                 | O-RING (SEE KIT 70-0647)               | 25-0651 | 1   |
| 9                 | SET SCREW (SEE KIT 70-0647)            | 8-0479  | 1   |
| 10                | JAM NUT (SEE KIT 70-0647)              | SEE KIT | 1   |
| 11                | UNLOADER VALVE BODY (SEE KIT 70-0647)  | SEE KIT | 1   |
| 12                | O-RING (SEE KIT 70-0647)               | 25-0652 | 1   |
| 13                | O-RINGV                                | 25-0163 | 1   |
| 14                | SUPPORT RING (SEE KIT 70-0647)         | SEE KIT | 1   |
| 15                | O-RING (SEE KIT 70-0647)               | 25-0655 | 1   |
| 16                | BY PASS JET UNLOADER (SEE KIT 70-0647) | SEE KIT | 1   |
| 17                | BULLET (SEE KIT 70-0647)               | SEE KIT | 1   |
| 18                | O-RING (SEE KIT 70-0647)               | 25-0656 | 1   |
| 19                | VALVE SEAT (SEE KIT 70-0647)           | SEE KIT | 1   |
| 20                | VALVE HOUSING                          | N/A     | 1   |
| 21                | O-RING                                 | 25-0664 | 1   |
| 22                | O-RING                                 | 25-0684 | 1   |
| 23                | O-RING                                 | 25-0654 | 1   |
| 24                | BY PASS HOUSING                        | N/A     | 1   |
| 25                | O-RING                                 | 25-0602 | 1   |
| 26                | INLET BANJO BOLT                       | 8-0595  | 1   |
| 27                | QUICK CONNECT SOCKET                   | 17-0007 | 1   |
| 28                | OUTLET CONNECTOR                       | 46-1389 | 1   |
| 29                | O-RING                                 | 25-0386 | 1   |
| 30                | SPRING (SEE KIT 70-0500)               | SEE KIT | 1   |
| 31                | CHECKING VALVE                         | SEE KIT | 1   |
| 32                | O-RING (SEE KIT 70-0500)               | 25-0653 | 1   |
| 33                | OUTLET BANJO BOLT                      | 8-0594  | 1   |
| 34                | O-RING                                 | 25-0169 | 1   |

| REPLACEMENT KITS |                        |        |     |
|------------------|------------------------|--------|-----|
| KIT #            | DESCRIPTION            | ITEMS  | QTY |
| 70-0500          | KIT - NON-RETURN VALVE | 16, 18 | 1   |
| 70-0647          | KIT - UNLOADER REBUILD | 1-19   | 1   |

Manufactured by Mi-T-M  
8650 Enterprise Drive, Peosta IA 52068  
563-556-7484/ Fax 563-556-1235