



JP-SERIES
OPERATION MANUAL
COLD WATER ELECTRIC
PRESSURE WASHER



CAUTION
RISK OF INJURY!

READ MANUAL *BEFORE* OPERATING!
This manual is an important part of the pressure washer
and must remain with this unit!

TABLE OF CONTENTS

INTRODUCTION	3
IMPORTANT SAFETY WARNINGS	4-7
ELECTRICAL PRECAUTIONS	4
SPRAY PRECAUTIONS	5
MISCELLANEOUS SAFETY PRECAUTIONS.....	6
DETERGENT CLEANING PRECAUTIONS.....	7
FEATURES	8, 10
SAFETY DECALS	9, 11
INSTALLATION & PREPARATION	12-15
ATTIRE.....	12
SETUP	12
POWER CORD CONNECTION.....	12-13
NOZZLE REVIEW.....	13
NOZZLE CONNECTION.....	14
WATER SUPPLY.....	14
UNLOADER	14
THERMAL RELIEF VALVE	15
PRE-START INSPECTION PROCEDURES.....	15
OPERATING INSTRUCTIONS	16-17
PRIMING THE PUMP	16
START-UP.....	16
CLEANING WITH DETERGENTS.....	17
SHUTDOWN.....	17
STORAGE & MAINTENANCE	18-19
SPECIFIC MAINTENANCE	18
WINTERIZING	18-19
START UP AFTER EXTENDED STORAGE	19
TROUBLESHOOTING	20-21
ACCESSORIES	22
STATEMENT OF WARRANTY	23

WARNING

This product contains one or more chemicals known to the State of California to cause cancer and birth defects or other reproductive harm.

INTRODUCTION

Congratulations on the purchase of your Job Pro® pressure washer! You can be assured your Job Pro® pressure washer was constructed and designed with quality and performance in mind. Each component has been rigorously tested to ensure the highest level of acceptance.

This operator's manual was compiled for your benefit. By reading and following the simple safety, installation, operation, maintenance and troubleshooting steps described in this manual, you will receive years of trouble free operation from your Job Pro® pressure washer. The contents of this manual are based on the latest product information available at the time of publication. Mi-T-M® reserves the right to make changes in price, color, materials, equipment, specifications or models at any time without notice.

! IMPORTANT !

These paragraphs are surrounded by a "SAFETY ALERT BOX". This box is used to designate and emphasize Safety Warnings that must be followed when operating this pressure washer. Accompanying the Safety Warnings are "signal words" which designate the degree or level of hazard seriousness. The "signal words" used in this manual are as follows:

- DANGER:** Indicates an imminently hazardous situation which, if not avoided, WILL result in death or serious injury.
- WARNING:** Indicates a potentially hazardous situation which, if not avoided, COULD result in death or serious injury.
- CAUTION:** Indicates a potentially hazardous situation which, if not avoided MAY result in minor or moderate injury.



The symbols set to the left of this paragraph are "Safety Alert Symbols". These symbols are used to call attention to items or procedures that could be dangerous to you or other persons using this equipment.



ALWAYS PROVIDE A COPY OF THIS MANUAL TO ANYONE USING THIS EQUIPMENT. READ ALL INSTRUCTIONS BEFORE OPERATING THIS PRESSURE WASHER AND ESPECIALLY POINT OUT THE "SAFETY WARNINGS" TO PREVENT THE POSSIBILITY OF PERSONAL INJURY TO THE OPERATOR.



Once the unit has been removed from the box, immediately write in the serial number of your unit in the space provided below.

SERIAL NUMBER _____

Inspect for signs of obvious or concealed freight damage. If damage does exist, file a claim with the transportation company immediately. Be sure that all damaged parts are replaced and that the mechanical problems are corrected prior to operation of the unit. If you require service, contact Customer Service at 800-553-9053.

Please have the following information available for all service calls:

1. Model Number
2. Serial Number
3. Date and Place of Purchase

Mi-T-M Corporation
8650 Enterprise Drive
Peosta, IA 52068



IMPORTANT SAFETY WARNINGS



ELECTRICAL PRECAUTIONS:

RISK OF ELECTRIC SHOCK OR ELECTROCUTION:

WARNING

Serious injury or death could occur if the pressure washer is not properly grounded. Your pressure washer is powered by electricity and may cause electric shock or electrocution if not used properly.

1. This product must be grounded. Make sure the pressure washer is equipped with a GFCI built into the power supply cord. If this is not available, the pressure washer must be plugged into a receptacle that is protected by a GFCI. Disconnect when not in use.
2. If your unit is equipped with a GFCI, DO NOT drop the GFCI as damage could result. If the GFCI is accidentally dropped, be certain to test the GFCI before using to ensure it is working properly. (Follow instructions on GFCI for test procedures.)
3. Always be certain the unit is receiving proper voltage. Disconnect when not in use.
4. DO NOT modify the plug provided with the product. If it will not fit the outlet, have a proper outlet installed by a qualified electrician. DO NOT use any type of adapter.

WARNING

Electrical shock may occur from electrical cord.

5. Check power cord for signs of crushing, cutting or heat damage. If replacement of plug or cord is needed use only identical replacement parts
6. DO NOT use extension cords with this pressure washer.
7. Keep all connections dry and off the ground. Do not allow electrical cords to lay in water or in such a position where water could come in contact with them. Do not touch plug with wet hands.
8. DO NOT pull on the electrical cord to disconnect from the outlet.

WARNING

Electrical shock may occur if pressure washer is not operated properly.

9. DO NOT direct spray on or into electrical installations of any kind! This includes electrical outlets, light bulbs, fuse boxes, transformers, the unit itself, etc.
10. DO NOT allow metal components of the pressure washer to come in contact with live electrical components.
11. Never operate the pressure washer with safety guards/covers removed or damaged.

WARNING

Serious injury or death may occur if unqualified persons attempt electrical repairs.

12. Any electrical wiring or repairs performed on this pressure washer should be done by Authorized Service Personnel in accordance with National and Local electrical codes.
13. Before opening any electrical enclosure, always shut off the pressure washer, relieve pressure and unplug the pressure washer from the power source. Allow the pressure washer to cool down. Never assume the pressure washer is safe to work on just because it is not operating. It could restart at any time! Service in a clean, dry, flat area.



IMPORTANT SAFETY WARNINGS



SPRAY PRECAUTIONS



DANGER

RISK OF INJECTION OR SEVERE CUTTING INJURY:

Keep clear of nozzle. Do not direct discharge stream at persons or pets. When using this product, basic precautions should always be observed, including the following:

1. Keep clear of the nozzle and spray! Never put your hand, fingers or body directly over the spray nozzle.
2. Never point the high pressure spray at yourself or anyone else.
3. This product is to be used only by trained operators.
4. Always keep operating area clear of all persons.
5. Never allow children or adolescents to operate this unit.
6. SEEK EMERGENCY MEDICAL CARE if the spray appears to have penetrated the skin! DO NOT TREAT AS A SIMPLE CUT!
7. High pressure hoses should be inspected daily for signs of wear. If evidence of failure exist, promptly replace all suspect hoses to prevent the possibility of injury from the high pressure spray. If a hose or fitting is leaking, NEVER PLACE YOUR HAND DIRECTLY ON THE LEAK.
8. NEVER operate the gun with the trigger wired in the open position. To prevent accidental discharge, the trigger gun should be securely locked when not in use.
9. Do not move the unit by pulling on the hose
10. Before removing the spray nozzle or servicing the unit, ALWAYS shut off the unit and trigger the gun to release trapped pressure. (Even after you shut off the unit, there is high pressure water left in the pump, hose and gun until you release it by triggering the gun.)
11. Do not leave pressurized unit unattended. Shut off the pressure washer and relieve trapped pressure before leaving.



MISCELLANEOUS SAFETY PRECAUTIONS

RISK OF EXPLOSION OR FIRE:

WARNING

Serious injury or death may occur from normal sparks in the motor and electrical system.

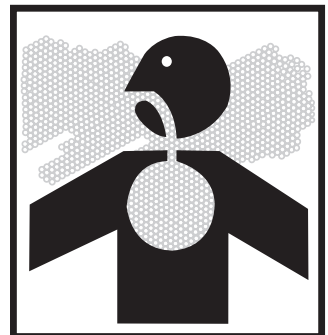
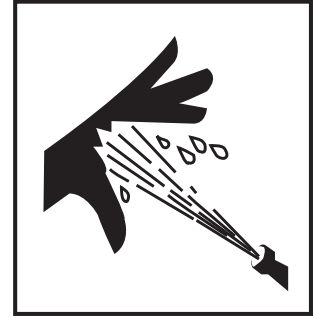
1. DO NOT operate unit in an area where flammable gas vapors may be present. An electric spark may cause an explosion or fire.
2. DO NOT spray flammable liquids. Do not spray in an area containing combustible dust, liquids or vapors.

RISK OF ASPHYXIATION:

WARNING

Serious injury or death may occur from inhaling dangerous vapors.

1. Follow all safety instructions provided with the materials you are spraying. Use of a respirator may be required when working with some materials. Do not use this pressure washer to dispense hazardous detergents.





IMPORTANT SAFETY WARNINGS



MISCELLANEOUS SAFETY PRECAUTIONS, CONT'D.

RISK OF BURSTING:

WARNING

Serious injury may occur from a pressure washer malfunction or exploding accessories if incorrect system components, attachments or accessories are used.

1. Never make adjustments to the factory set pressures.
2. Never exceed manufacturers maximum allowable pressure rating of attachments.
3. Use only manufacturer recommended repair parts for your pressure washer.

WARNING

Serious injury or death may occur if attempting to start the pressure washer when the pump is frozen.

4. In freezing temperatures, the unit must always be warm enough to ensure there is no ice formation in the pump. Do not start the pressure washer if it has been transported in an open or underheated vehicle without first allowing the pump to thaw.

RISK FROM MOVING PARTS:

WARNING

Serious injury may occur to the operator from moving parts on the pressure washer.

1. Never make adjustments to the unit while it is connected to the power source.
2. Do not operate the unit without all protective covers in place.
3. Before servicing the pressure washer, turn the unit off, disconnect from the power source, relieve the water pressure and allow the unit to cool down. Service in a clean, dry, flat area.
4. Follow the maintenance instructions specified in the manual.

RISK OF BODILY INJURY:

WARNING

Serious injury can occur from loose debris being propelled at high speed from the spray gun.

1. Always wear protective goggles when operating the unit to shield the eyes from flying debris and detergents.
2. Do not direct spray toward fragile materials such as glass. Shattering could result in serious injury.

WARNING

Injury may occur if the operator loses balance caused by the thrust of water traveling through the spray nozzle.

1. Stay alert-watch what you are doing. Do not operate the unit when fatigued or under the influence of alcohol or drugs.
2. Never squeeze the trigger unless securely braced. DO NOT overreach or stand on unstable support. Wet surfaces can be slippery, wear protective foot gear and keep good footing and balance at all times. Never trigger the gun while on a ladder or roof.

WARNING

Injury may occur from the pressure washer.

1. Always hold on firmly to the gun/lance assembly when starting and operating the unit. Failure to do so can cause the lance to fall and whip dangerously.
2. Know how to stop the pressure washer and bleed pressures quickly. Be thoroughly familiar with controls.





IMPORTANT SAFETY WARNINGS



DETERGENT CLEANING PRECAUTIONS

RISK OF BODILY INJURY:

WARNING

Serious injury or death may occur from detergents contacting the skin.

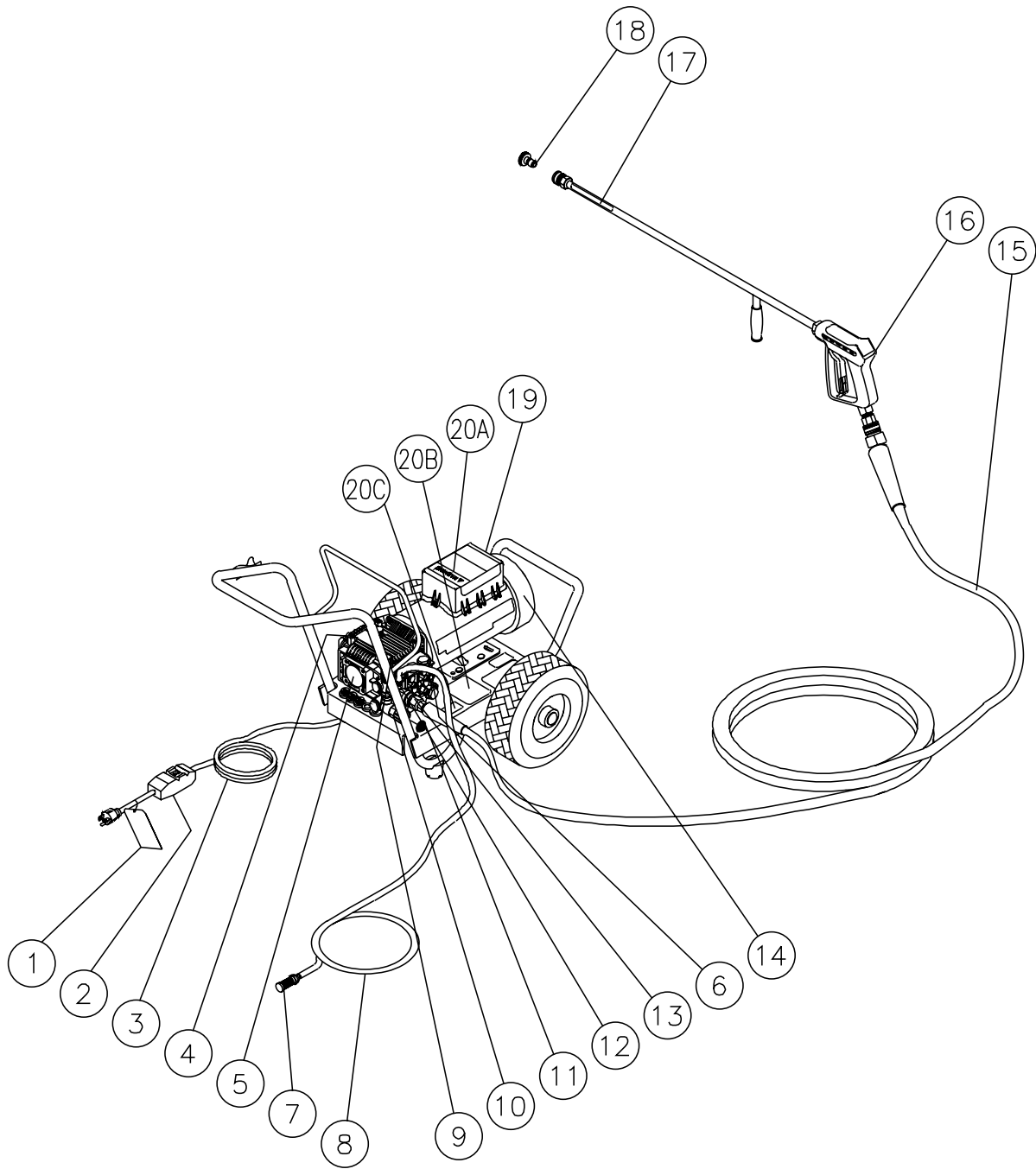
1. DO NOT use solvents, highly corrosive detergents or acid type cleaners with this pressure washer. Use only mild detergents.
2. KNOW YOUR DETERGENTS! Be prepared to tell a physician exactly what you are using in the event of an emergency. Read the Material Safety Data Sheet (MSDS) provided with your detergent and all detergent labels. Follow all appropriate instructions regarding preparation, use, safety and transportation.
3. Protective equipment such as rubber suits, gloves and respirators are advisable, especially when using cleaning detergents.
4. Keep all detergents out of the reach of children.



! SAVE THESE INSTRUCTIONS !



FEATURES



FEATURES LISTING

- | | | | |
|-----|------------------------------------|------|--|
| 1. | Tag-Warning: Risk of Electrocution | 13. | Water Outlet |
| 2. | GFCI | 14. | Motor |
| 3. | Power Cord | 15. | High Pressure Discharge Hose |
| 4. | Oil Sight Glass | 16. | Gun Assembly |
| 5. | Pump | 17. | Decal-Warning: Risk of Injection |
| 6. | Thermal Relief Valve | 18. | Quick Connect Nozzle |
| 7. | Detergent Strainer | 19. | On/Off Switch |
| 8. | Detergent Hose | 20A. | Decal-Warning: Risk of Electrocution |
| 9. | Adjustment Knob | 20B. | Decal-Warning: Caution |
| 10. | Water Inlet | 20C. | Decal-Warning: Risk of Injection/Explosion |
| 11. | Water Inlet Strainer | | |
| 12. | Adjustable Detergent Injector | | |

SAFETY DECALS & PLACEMENT
DO NOT REMOVE SAFETY DECALS FROM UNIT UNLESS
REPLACING WITH MOST CURRENT SAFETY DECAL!!

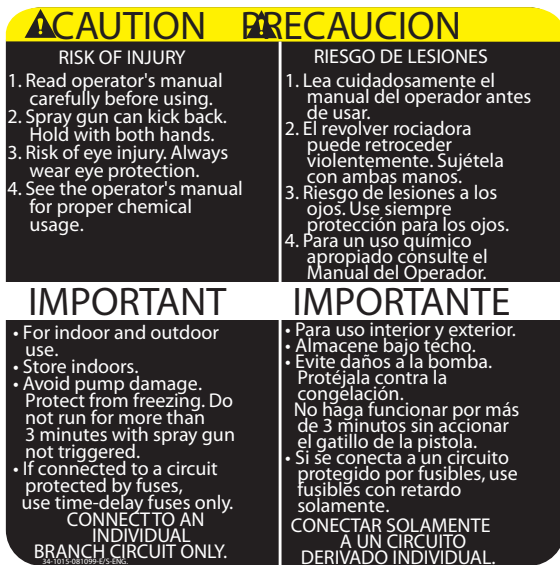
Reference #20A Decal: Warning-Risk of Electrocutation (Part # 34-1013)



Reference #1 Tag: Risk of Electrocutation (Part # 34-1014)



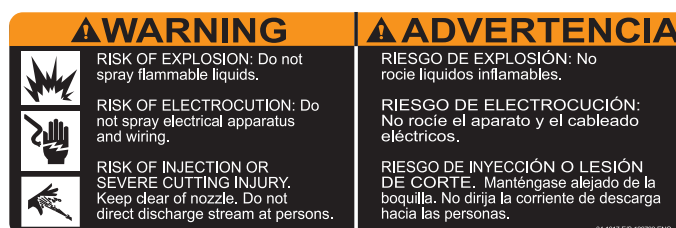
Reference #20B Decal: Caution Statements (Part # 34-1015)



Reference #17 Decal: Warning-Risk of Injection (Part # 34-1253)

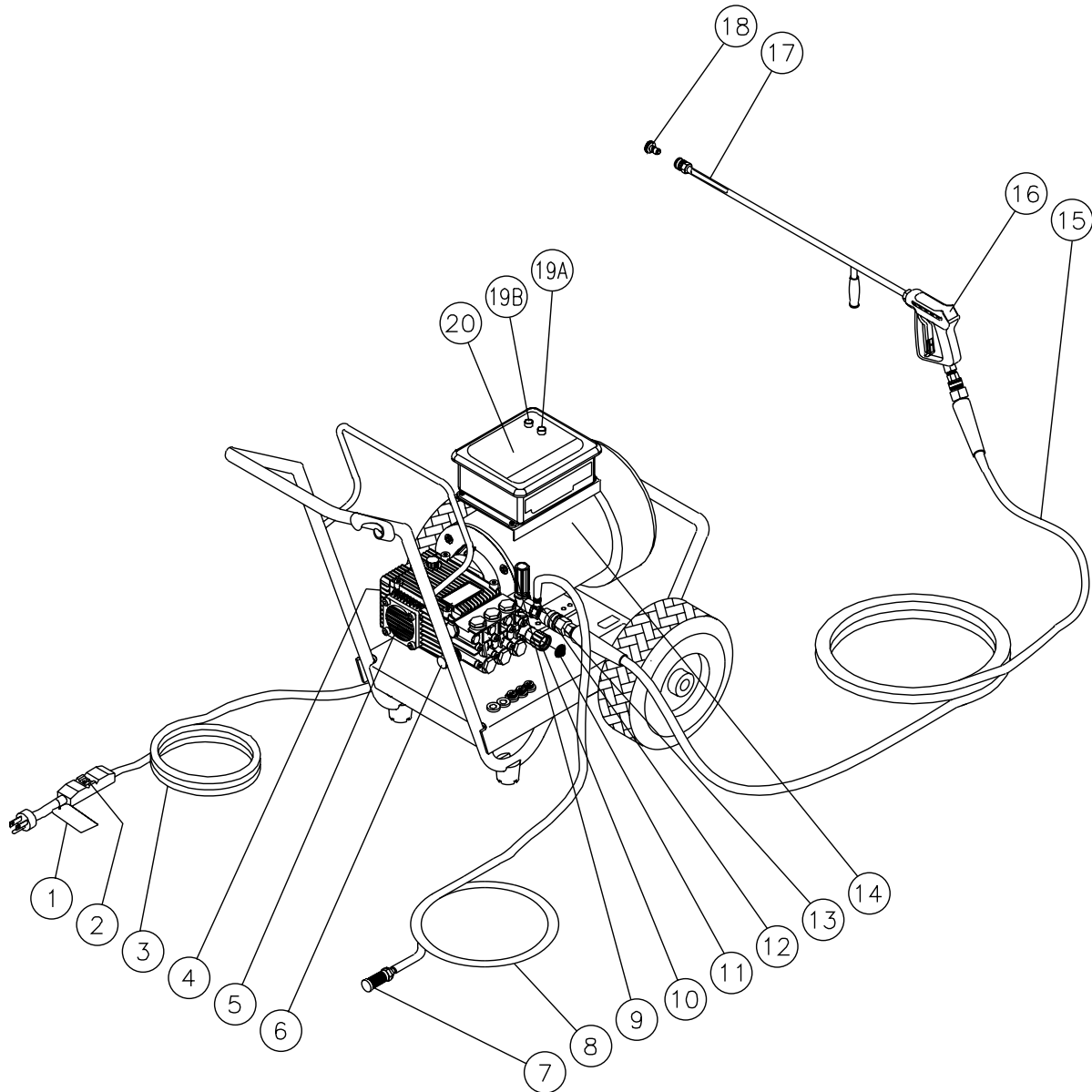


Reference #20C Decal: Warning-Risk of Injection/Explosion (Part # 34-1017)



FEATURES

JP LG ELECTRIC FEATURES-060100-EDW



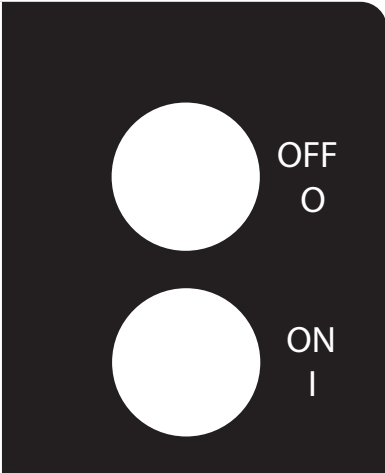
FEATURES LISTING

- | | |
|---------------------------------------|--------------------------------------|
| 1. Tag-Warning: Risk of Electrocution | 13. Water Outlet |
| 2. GFCI | 14. Motor |
| 3. Power Cord | 15. High Pressure Discharge Hose |
| 4. Oil Sight Glass | 16. Gun Assembly |
| 5. Pump | 17. Decal-Warning: Risk of Injection |
| 6. Thermal Relief Valve | 18. Quick Connect Nozzle |
| 7. Detergent Strainer | 19A. On Switch |
| 8. Detergent Hose | 19B. Off Switch |
| 9. Adjustment Knob | 20. Decal-Warning/Caution/Operating |
| 10. Water Inlet | |
| 11. Water Inlet Strainer | |
| 12. Adjustable Detergent Injector | |

SAFETY DECALS & PLACEMENT

DO NOT REMOVE SAFETY DECALS FROM UNIT UNLESS REPLACING WITH MOST CURRENT SAFETY DECAL!!

Reference #20 Decal: Warning-Risk of Electrocutation (Part # 34-1137)

<p style="text-align: center;">⚠ WARNING</p> <p>RISK OF ELECTROCUTION. DO NOT REMOVE THIS LABEL.</p> <ol style="list-style-type: none"> 1. Connect only to a properly grounded outlet. Do not remove ground pin. 2. Inspect cord before using. Do not use if cord is damaged. 3. Keep all connections dry and off the ground. 4. Do not touch plug with wet hands. 5. This unit may be provided with a Ground Fault Circuit Interrupter (GFCI) built into the power cord plug. If replacement of plug or cord is needed, use only identical replacement parts. If this unit is not provided with a GFCI, this unit should only be connected to a power supply receptacle protected by a ground fault circuit interrupter. 6. Do not use an extension cord with this machine. 7. Read the operator's manual carefully before using. 8. Risk of Injection or Severe Injury to persons. Keep clear of nozzle. Do not touch or direct discharge stream at persons. This machine is to only be used by qualified operators. 9. Risk of Electrocutation: Do not direct spray toward any electrical connections or outlets. 10. Risk of Explosion: Do not spray flammable liquids. Do not spray in an area containing combustible dust, liquids or vapors. 11. Risk of Injury: Always wear proper safety attire including eye protection. Do not use this product when children are present. 12. Risk of Chemical Exposure: Use only water and recommended detergents with this unit. <p style="text-align: center;">FAILURE TO FOLLOW THE ABOVE INSTRUCTIONS COULD RESULT IN A SEVERE ELECTRICAL SHOCK.</p>	<p style="text-align: center;">⚠ ADVERTENCIA</p> <p>RIESGO DE ELECTROCUCION. NO quite esta ETIQUETA.</p> <ol style="list-style-type: none"> 1. Conecte solamente a una toma corriente que está bien fundado. No quite la pata de conexión de la tierra. 2. Antes de usar inspeccione la cuerda. No use si la cuerda está dañando. 3. Mantenga los conexiones secos y apartados de la tierra. 4. No toque el enchufe con manos mojados. 5. Este producto debe conectarse a tierra. Asegúrese de que la lavadora a presión esté equipada con un Interruptor de circuito de falla a tierra (Ground Fault Circuit Interrupter, GFCI) incorporado en el cordón de alimentación. Si no lo tiene, debe conectarse la lavadora a presión únicamente en un receptáculo que esté protegido por un Interruptor de circuito de falla a tierra. Desconéctela cuando no esté en uso. 6. No use una cuerda extensión con la unidad. 7. Antes de usar lea y entienda todas las instrucciones y el manual de operación. 8. Riesgo de inyección o lesión severa. Mantenga la boquilla despejada. No dirija el chorro hacia alguna persona o hacia usted. 9. Riesgo de electrocución. No dirija el rociado hacia conexiones o toma corrientes eléctricos. 10. Riesgo de explosión. No dirija el chorro hacia conexiones eléctricas. Tomas de corrientes o líneas de alimentación de corriente. 11. Riesgo de lesión. Mientras se opera esta unidad se recomiendan antiparras y protección apropiada. No use esta unidad cerca de niños. 12. <p style="text-align: center;">SI NO SIGA LAS INSTRUCCIONES HAY EL RIESGO DE ELECTROCUCION SEVERA.</p>	
<p style="text-align: center;">⚠ CAUTION</p> <ol style="list-style-type: none"> 1. To Reduce Risk of Injury: Read and understand the operation manual and all instructions before using. 2. Stay Alert: Hold onto gun/wand firmly with both hands to avoid dangerous kickbacks. 3. Do not overreach or stand on unstable support. Keep good footing and balance at all times. 4. Inspect all hoses for kinking, cuts and leaks. 5. Risk of Eye Injury: Always wear eye protection. 6. Protect pump from freezing. 7. Always turn on water supply to pump before starting. 8. Engage trigger safety lock-off when not in use. <p style="text-align: center;">CONNECT TO AN INDIVIDUAL BRANCH CIRCUIT ONLY.</p>	<p style="text-align: center;">⚠ PRECAUCION</p> <ol style="list-style-type: none"> 1. Para Reducir el Riesgo de que Ocurran Lesiones: Lea y entienda el manual de operación y todas las instrucciones ante de usar el producto. 2. Permanezca Alerta: Sostenga la pistola varilla firmemente con ambas mano para evitar golpes de retroceso peligrosos. 3. No se extienda demasiado o se pare en un apoyo inestable. Mantenga una buena posición y balance todo el tiempo. 4. Inspeccione las mangueras por dobleces, cortes y pérdidas. 5. Riesgo de que Ocular Lesions: Use siempre protección ocular. 6. Proteja la bomba de la congelación. 7. Antes de comenzar. Abra siempre el suministro de agua a la bomba. 8. Coloque el seguro del gatillo en la posición apagado cuando no este usando el producto. <p style="text-align: center;">CONECTE A UNA RAMA INTERRUPTOR INDIVIDUAL SOLAMENTE.</p>	<p style="text-align: center;">OPERATION</p> <ol style="list-style-type: none"> 1. Be sure that the correct electrical system (voltage, amperage) is supplied for this unit. 2. Connect the inlet water supply to the unit. Turn on the water supply. Trigger gun to prime pump and release air. 3. Point gun in a safe direction. Brace wand securely to avoid recoil. 4. To start the unit, press the green "ON" button. 5. To stop the unit, press the red "OFF" button. Always turn off water supply and trigger spray gun to release pressure. 6. Observe lubrication and maintenance recommendations as listed in the operator's manual.
<p style="text-align: center;">IMPORTANT</p> <ol style="list-style-type: none"> 1. For indoor and outdoor use. 2. Store indoors. 3. Avoid pump damage. Protect from freezing. Do not run for more than 3 minutes with spray gun not triggered. 4. If connected to a circuit protected by fuses, use time-delay fuses only. 5. Servicing is to be done with the unit disconnected from the supply circuit. 	<p style="text-align: center;">IMPORTANTE</p> <ol style="list-style-type: none"> 1. Para uso interior y exterior. 2. Almacene bajo techo. 3. Evite daños a la bomba. Protéjala contra la congelación. No haga funcionar por más de 3 minutos sin accionar el gatillo de la pistola. 4. Si se conecta a un circuito protegido por fusibles, use fusibles con retardo solamente. 5. Para hacer los servicios, necesita desconectar la unidad del circuito de suministro. 	<p style="text-align: center;">OPERACIÓN</p> <ol style="list-style-type: none"> 1. Sea usted seguro que la sistema eléctrica es correcta (voltaje, amperaje) para esta unidad. 2. Conecte usted el suministro del agua a la unidad. Encienda el suministro del agua. Haz la pistola para preparar la bomba y despedir el aire. 3. Haz la pistola en una manera segura. Afirme la varita seguramente para evitar el retroceso. 4. Para encender la unidad, pon el botón verde de "encendido". 5. Para apagar la unidad, pon el botón rojo de "apagado". 6. Lea usted las recomendaciones del lubricación y el mantenimiento como se dice en el manual del propietario. <p style="text-align: right; font-size: small;">34-1137-E5-041100-ENG.</p>

Reference #17 Decal: Warning-Risk of Injection (Part # 37-1253)

	<p style="text-align: center;">⚠ WARNING</p> <p>RISK OF INJECTION OR SEVERE INJURY. Never put your hand, fingers or body directly over the spray nozzle.</p> <p style="text-align: center; font-size: x-small;">34-1253-030801-ENG.</p>	<p style="text-align: center;">⚠ ADVERTENCIA</p> <p>RIESGO DE INYECCION O LISION SEVERA Nunca coloque la mano, los dedos o el cuerpo directamente sobre la boquilla de rocío.</p>
---	---	---

Reference #1 Tag: Warning: Risk of Electrocutation (Part # 34-1014)

WARNING



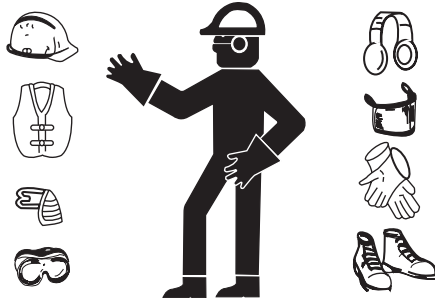
RISK OF ELECTROCUTION. DO NOT REMOVE THIS TAG.

1. CONNECT ONLY TO A PROPERLY GROUNDED OUTLET. DO NOT REMOVE GROUND PIN.
2. INSPECT CORD BEFORE USING. DO NOT USE IF CORD IS DAMAGED.
3. KEEP ALL CONNECTIONS DRY AND OFF THE GROUND.
4. DO NOT TOUCH PLUG WITH WET HANDS.
5. THIS PRODUCT IS PROVIDED WITH A GROUND FAULT CIRCUIT INTERRUPTER (GFCI) BUILT INTO THE POWER CORD PLUG. IF REPLACEMENT OF PLUG OR CORD IS NEEDED, USE ONLY IDENTICAL REPLACEMENT PARTS.
6. DO NOT USE AN EXTENSION CORD WITH THIS MACHINE.
7. READ THE OPERATOR'S MANUAL BEFORE USING.

FAILURE TO FOLLOW THE ABOVE INSTRUCTIONS COULD RESULT IN A SEVERE ELECTRICAL SHOCK.

34-1014-081029-E5-ENG

INSTALLATION & PREPARATION



ATTIRE:

Proper attire is essential to your safety. It is advised to utilize whatever means necessary to protect eyes, ears, and skin. Additional safety attire (such as respiratory mask) may be required when using detergent cleaning agents with this washer.

SETUP:

1. This unit should only be placed on a level surface to ensure proper lubrication for the water pump while operating. NEVER spray water directly on the unit!
2. Do not place unit in an area:
 - a. where there is evidence of oil or gas leaks.
 - b. where flammable gas vapors may be present.
3. Do not allow the unit to be exposed to rain, snow or freezing temperatures. If any part of the unit becomes frozen; excessive pressure may build up in the unit which could cause it to burst, resulting in possible serious injury to the operator or bystanders.
4. Before each use, be certain the oil level is in the center of the sight glass. If low, fill with Mi-T-M pump oil (#AW-4085-0016). DO NOT OVERFILL!



WARNING

RISK OF EXPLOSION!

DO NOT OPERATE UNIT IN AN AREA WHERE FLAMMABLE GAS VAPORS MAY BE PRESENT. AN ELECTRIC SPARK MAY CAUSE AN EXPLOSION.

RISK OF BURSTING!

DO NOT STORE/OPERATE UNIT IN A FREEZING ENVIRONMENT.



DANGER

RISK OF ELECTROCUTION!

THIS UNIT MUST BE CONNECTED TO A PROPERLY GROUNDED OUTLET. DO NOT USE AN ADAPTER OR REMOVE THE THIRD GROUNDING PRONG.

POWER CORD CONNECTION:

1. Make certain the motor switch is in the "OFF" position.
2. Ensure electrical supply is identical to the specifications listed on the pressure washer data plate.
3. **GROUNDING INSTRUCTIONS:** This product must be grounded. If it should malfunction or breakdown, grounding provides a path of least resistance for electric current to reduce the risk of electric shock. This product is equipped with a cord having an equipment-grounding conductor. The plug must be plugged into an appropriate outlet that is properly installed and grounded in accordance with all local codes and ordinances.
4. **DANGER:** Improper connection of the equipment-grounding conductor can result in a risk of electrocution. Check with a qualified electrician or service personnel if you are in doubt as to whether the outlet is properly grounded. Do not modify the plug - if it will not fit the outlet, have a proper outlet installed by a qualified electrician. Do not use any type of adaptor with this product.
5. **GROUND FAULT CIRCUIT INTERRUPTER PROTECTION:**
 - a. **SINGLE PHASE:** If this pressure washer is provided with a Ground Fault Circuit Interrupter (GFCI) built into the plug or the power supply cord, test the GFCI each time it is plugged into an outlet according to instructions on the GFCI. DO NOT use the pressure washer if the test fails! The GFCI provides additional protection from the risk of electric shock. Should replacement of the plug or cord become necessary, use only identical replacement parts that include GFCI protection.
 - b. **SINGLE PHASE:** If this pressure washer is not provided with a GFCI, this pressure washer should only be connected to a receptacle that is protected by a Ground Fault Circuit Interrupter (GFCI) to comply with the National Electric Code (NFPA 70) and to provide additional protection from the risk of electric shock.
 - c. **THREE PHASE:** These pressure washers are not provided with GFCI protection.



WARNING

RISK OF ELECTROCUTION!

TO REDUCE THE RISK OF ELECTROCUTION, KEEP ALL CONNECTIONS DRY AND OFF THE GROUND. DO NOT TOUCH PLUG WITH WET HANDS.

INSTALLATION & PREPARATION

POWER CORD CONNECTION, CONT'D.:

6. **EXTENSION CORDS:** *Mi-T-M DOES NOT RECOMMEND THE USE OF EXTENSION CORDS!* If use of an extension cord is unavoidable, it must be plugged into a GFCI found in circuit boxes or protected receptacles. When using an extension cord, consult a qualified electrician to determine the proper wire gauge needed for the length of the extension cord.

SINGLE PHASE: Use only 3-wire extension cords that have 3-prong grounding-type plugs and 3-pole cord connectors that accept the plug from the product.

THREE PHASE: Use only 4 wire extension cords that have 4-prong grounding type plugs and 4-pole cord connectors that accept the plug from the product.

Use only extension cords that are intended for outdoor use. These extension cords are identified by a marking "Acceptable for use with outdoor appliances; store indoors while not in use." Use only extension cords having an electrical rating not less than the rating of the product. Do not use damaged extension cords. Examine extension cord before using and replace if damaged. Do not abuse extension cord and do not pull on any cord to disconnect. Keep cord away from heat and sharp edges. Always connect or disconnect the extension cord from the receptacle before connecting or disconnecting the product from the extension cord.

7. Ensure the area between the pressure washer cord and outlet is kept dry.
8. Insert the male plug into a grounded AC outlet. **DO NOT use an adapter OR remove the grounding plug!!**

NOZZLE REVIEW:

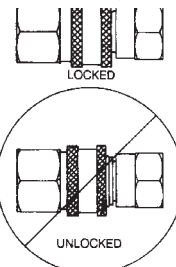
Various nozzles may be quick-connected into the end of the wand to change the spray pattern or use the detergent feature. When using Quick Connects (Q.C.), be certain the connection is securely locked. If not, the high pressure water may shoot the nozzle from the wand, causing severe injury or serious damage. To determine spray fan, refer to the actual number stamped on the nozzle. The first two digits indicate the spray fan in degrees, i.e.; 00=0°, 15=15°, 25=25°, 65=detergent/low pressure.

1. **The 0° nozzle (RED):** This is a blasting nozzle. It delivers a very concentrated stream of water. Be cautious when using the straight narrow stream. It is not recommended for use on painted or wood surfaces, or items attached with adhesive backings. Uses: Removing weeds from sidewalk cracks, stubborn stains from concrete, masonry, aluminum and steel, caked mud from equipment, and cleaning lawn mower undersides.
2. **The 15° nozzle (YELLOW):** This is a chiseling nozzle. The spray should be directed at a 45° angle to the surface and used like a scraper to remove paint, grease and dirt. Uses: Surface preparation (removing mildew stains and paint chips).
3. **The 25° nozzle (GREEN):** This is a flushing nozzle. This pattern is best suited for flushing dirt, mud, and grime. Uses: Wet sweeping leaves from walks, curbs and driveways, cleaning stable floors, washing swimming pool bottoms, degreasing engines.
4. **The 65° nozzle (BLACK):** This is a low pressure detergent application nozzle. This broad spray pattern distributes solution over vast areas under low pressure. Uses: Detergent application, misting or rinsing.

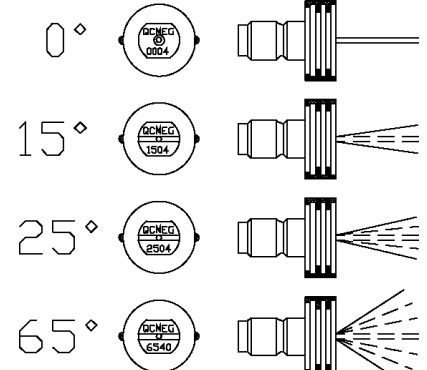
WARNING

RISK OF INJECTION CAUSING SEVERE INJURY!
NEVER LOOK DIRECTLY AT THE NOZZLE ORIFICE UNLESS IT IS DISCONNECTED FROM THE GUN/WAND ASSEMBLY!

CONNECTION OF Q.C. NOZZLES



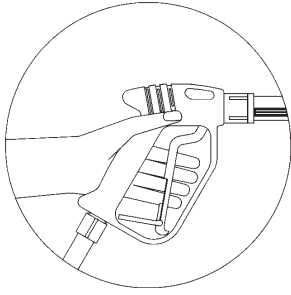
QUICK-CONNECT (Q.C.)



INSTALLATION & PREPARATION

WARNING

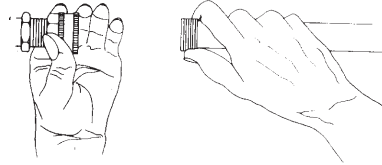
RISK OF SEVERE INJURY!
THE TRIGGER GUN SHOULD ALWAYS BE LOCKED IN THE OFF POSITION WHEN NOT IN USE!



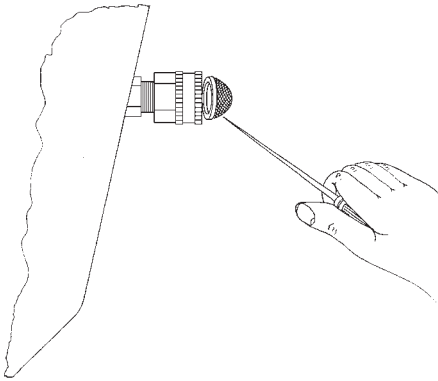
NOZZLE CONNECTION:

1. Be certain the trigger gun is locked in the "OFF" position. See *WARNING*, left.
2. The nozzle assembly should be disconnected from the gun/wand assembly at this by retracting the locking ring on the quick-connect fitting to remove the nozzle.

QUICK-CONNECT FITTING



CHECK WATER INLET STRAINER



WATER SUPPLY:

1. Select a water supply hose which is a quality grade of garden hose measuring at least 3/4" ID and no longer than 50 feet.
2. Check the water inlet strainer to ensure it is clean and free of any obstructions. Periodic cleaning of the water strainer will help prevent pump problems. As a strainer becomes obstructed, it restricts proper flow of water to the pump. This can cause cavitation which will result in premature failure of pump packings and valves. Using a screw driver, remove the screen; clean or replace with Mi-T-M #19-0001 if necessary.

3. Connect the hoses.

- a. Connect one end of the water supply hose to the water inlet of the unit.
- b. Connect the other end of the hose to your pressurized water supply.

NOTE: Do not use a non-pressurized water supply (i.e. from a well or pond) with this unit.

- c. Connect the high pressure discharge hose to the water outlet of the unit.
4. Follow the incoming water requirements listed below:
 - a. Water pressure must be a minimum of 20 pounds per square inch (PSI) and a maximum of 125 PSI. (A typical outdoor faucet will generally supply this PSI if turned completely "ON".)
 - b. Incoming GPM must be approximately one gallon more than the outgoing GPM stated on the pressure washer nameplate. (You can check GPM by timing how long it takes to fill a 5 gallon container.)
 - c. Incoming water temperature must not exceed 140°F (78°C). Excessive pump damage may result if the water temperature exceeds this acceptable level.
 5. Never allow the unit to operate without the incoming water line attached and the water supply turned all the way on.

CAUTION

RISK OF UNIT DAMAGE!
DO NOT OVERTIGHTEN THE UNLOADER. BREAKAGE WILL RESULT IN IMMEDIATE LOSS OF WATER PRESSURE AND COSTLY REPAIRS.

UNLOADER:

The unloader valve on your machine is equipped with an adjustment knob to adjust the pressure. Should less pressure be required, simply turn the adjustment knob counterclockwise. To set back to maximum, turn adjustment knob completely clockwise. **DO NOT OVERTIGHTEN!**

INSTALLATION & PREPARATION

THERMAL RELIEF VALVE:

To ensure the water temperature does not exceed acceptable levels, never allow the pressure washer to operate in the bypass mode (with the unit running and the trigger closed) for more than three minutes.

A thermal relief valve has been added to this unit to protect the pump. This valve will open and release water if the water temperature in the pump has exceeded 140° F. This will allow fresh, cool water to enter the system, preventing premature failure of pump packings.

PRE-START INSPECTION PROCEDURES:

Before starting the unit, perform the following procedures:

1. Inspect electrical cord for cuts. If a cut is found, DO NOT TOUCH OR USE ELECTRICAL CORD! Replace cord before starting the unit.
 2. Check the oil level in the pump.
 3. Inspect the inlet water strainer. Clean or replace if necessary. See "Water Supply", #2, pg. 15.
 4. Check all hose connections to ensure they are securely tightened. See "Water Supply", #3, pg. 15.
 5. Inspect for system water leaks and oil leaks. Be sure that all damaged parts are replaced and that the mechanical problems are corrected prior to operation of the unit. If service is needed, contact Customer Service.
 6. Inspect high pressure hose for kinking, cuts or leaks. If a cut or leak is found, DO NOT USE HOSE! Replace hose before starting unit. Be sure that all damaged parts are replaced and that the mechanical problems are corrected prior to operation of the unit. If you need service, contact Customer Service.
-

END OF PREPARATION INSTRUCTIONS

WARNING

THE FOLLOWING PAGES CONTAIN OPERATING AND MAINTENANCE INSTRUCTIONS

DO NOT ATTEMPT TO OPERATE THIS PRESSURE WASHER UNTIL YOU HAVE READ AND UNDERSTOOD ALL SAFETY PRECAUTIONS AND INSTRUCTIONS LISTED IN THIS MANUAL.

INCORRECT OPERATION OF THIS UNIT CAN CAUSE SERIOUS INJURY!!

DO NOT ALTER OR MODIFY THIS EQUIPMENT IN ANY MANNER!

OPERATING INSTRUCTIONS

PRIMING THE PUMP:

1. It is essential to prime the pump on initial start-up and each time the water supply is disconnected from the unit after initial use.
2. Lay the high pressure hose out to remove any loops. Water flow will constrict the hose, creating tight loops if the hose is not straight.
3. Securely connect the gun assembly to the high pressure hose.

NOTE: *The nozzle should NOT be connected to the gun assembly at this time. See "Nozzle Connection" pg. 14.*

4. With the trigger gun locked in the "OFF" position, turn the water supply completely on. Pointing the gun in a safe direction, unlock the trigger gun and squeeze the trigger.
5. Low pressure water will begin flowing from the hose/gun assembly. This allows the unit to prime and purge any air from the system. The unit is primed when water flow is uninterrupted by air.
6. Once the unit is primed, release the trigger and lock the gun in the "OFF" position. Securely connect the nozzle assy. (See "Nozzle Connection" pg. 14.)

START-UP:

1. Refer to the "Safety Precautions" pgs. 4-7 before starting the unit.
2. Locate the Safety Decals on your unit and heed their warnings.
3. With the gun locked in the "OFF" position, point the trigger gun away from yourself or anyone else. Ensure water supply is turned completely on.
4. Disengage the safety lock-off on the gun and squeeze the trigger. Low pressure water will begin flowing from the nozzle.
5. Before starting the unit, brace yourself as the gun will kickback from the high pressure created by the pump once the unit has started.
6. Move the switch to the "ON" position. This switch includes a circuit breaker for protection of the motor. In case of excess load, the circuit breaker will automatically move the switch to the "OFF" position. To restart, move the On/Off Switch to the "ON" position again.
7. Once the unit is turned on, perform the following procedures with the gun open:
 - a. Inspect for system water leaks and oil leaks. If a leak is found, TURN UNIT OFF IMMEDIATELY! Be sure that all damaged parts are replaced and that the mechanical problems are corrected prior to operation of the unit. If you require service, contact Mi-T-M Customer Service.
 - b. Inspect high pressure hose for kinking cuts and leaks. If a cut or leak is found, DO NOT TOUCH HOSE AT CUT OR LEAK!!! TURN UNIT OFF IMMEDIATELY! Replace hose before restarting the unit. Be sure that all damaged parts are replaced and that the mechanical problems are corrected prior to operation of the unit. If you require service, contact Mi-T-M Service.
 - c. Inspect electrical cord for cuts. If a cut is found, DO NOT TOUCH OR USE ELECTRICAL CORD! Replace cord before starting the unit.
8. Trigger the gun several times. **Be certain** to LOCK the trigger gun in the "OFF" position whenever changing the nozzle. NEVER look directly into the nozzle! High pressure water creates a risk of severe injury!
9. Do not allow unit to operate in bypass mode (with trigger closed) for more than three minutes without triggering the gun. Failure to follow this simple rule can cause premature failure of pump packing seals, resulting in costly pump repair.
10. Because your pressure washer delivers a high pressure spray and a variety of spray patterns, there are many cleaning jobs that can be done without the use of detergents. If a cleaning agent is required, see "Cleaning With Detergents" pg. 17 for the correct procedures.



WARNING

RISK OF INJECTION CAUSING SEVERE INJURY!

- KEEP CLEAR OF NOZZLE! NEVER PLACE HAND OR FINGERS IN FRONT OF NOZZLE!
- DO NOT DIRECT DISCHARGE STREAM AT PEOPLE OR PETS!
- BE CERTAIN THE NOZZLE IS SECURELY CONNECTED TO THE WAND TO PREVENT AN ACCIDENTAL DISCHARGE!



CAUTION

RISK OF DAMAGE.

- DONOT ALLOW SPRAY PATTERN TO REMAIN ON A FIXED AREA FOR AN EXTENDED PERIOD OF TIME. POSSIBLE DAMAGE MAY OCCUR TO THE AREA.

OPERATING INSTRUCTIONS

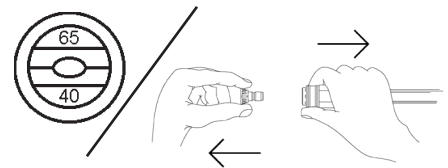
CLEANING WITH DETERGENTS:

1. Refer to "Detergent Cleaning Precautions" pg. 7 before working with detergents. Be certain to wear protective safety attire as stated on pg. 12.
2. Prepare detergent solution according to label directions. Never pump acids, alkaline, abrasive fluids or solvents through the unit.
3. Your injector is equipped with an adjustment knob on the pump head, you may adjust the amount of detergent desired by turning the knob completely counterclockwise to set at the maximum siphon rate.
4. Immerse the detergent strainer into the detergent solution to allow detergent to siphon.
5. With the trigger gun locked in the "OFF" position, securely quick-connect the detergent spray nozzle (#6540° BLACK) into the end of the wand.

NOTE: *This injection system is designed to apply detergents under low pressure only. It will not allow detergent solutions to be introduced into the system unless the detergent nozzle (6540 Black) is installed.*

6. To apply solution; unlock the trigger gun and squeeze the trigger. In a few moments a detergent/water mixture will exit the low pressure nozzle. Start spraying the lower portion of the surface being cleaned and move up, using long overlapping strokes. Applying from the bottom up helps avoid streaking. Allow to soak briefly. DO NOT allow detergent solution to dry on the surface. (Avoid working on hot surfaces or in direct sunlight to minimize the chances of the detergent drying, which may result in damaging painted surfaces.) Be certain to rinse a small section at a time.
7. To rinse; lock the trigger gun in the "OFF" position, securely quick-connect the desired high pressure nozzle into the end of the wand. Unlock the trigger gun and spray. It will take about 30 seconds to purge all detergent from the line. For best rinsing results, start at the top and work down.
8. Siphon a gallon of water through the low pressure detergent injection system after each use. This prevents the possibility of corrosion or detergent residue causing mechanical problems during the next use.

QUICK CONNECT DETERGENT



SHUTDOWN:

1. Move the switch to the "OFF" position to turn unit off.
2. Turn the water supply off.
3. Pointing the gun in a safe direction, trigger the gun momentarily to relieve any trapped pressure.
4. Once pressure is relieved, disconnect the nozzle.
5. Disconnect the unit from the power source.
6. Disconnect and drain gun, wand and hoses.
7. Wipe unit clean and store with gun, wand and hoses in a safe area.

STORAGE & MAINTENANCE

SPECIFIC MAINTENANCE:

PUMP: The pump oil must be changed after the first 25 hours of operation. Once the initial oil change has been completed, it is recommended the oil be changed every 3 months or 250 hour intervals. If oil appears dirty or milky, changes may be required at a greater frequency. Use Mi-T-M pump oil #AW-4085-0016 and fill only to the center of the oil sight glass. **DO NOT OVERFILL!**

NOZZLES: Water flow through the spray nozzle will erode the orifice, making it larger, resulting in a pressure loss. Nozzles should be replaced whenever pressure is less than 85% of the maximum. The frequency of replacement will depend upon such variables as mineral content in the water and number of hours the nozzle is used.

QUICK COUPLERS: There is an o-ring seal inside the female quick coupler. This o-ring will deteriorate or, if the unit is allowed to pump without the high pressure hose or nozzle attached, the o-ring may be blown out occasionally. Simply insert a replacement o-ring to correct the leak. (Additional o-rings can be purchased from your dealer.)

WINTERIZING:

For storage and transportation purposes in subfreezing ambient temperatures, it will be necessary to winterize this unit. This unit must be protected to the lowest incurred temperature for the following reasons:

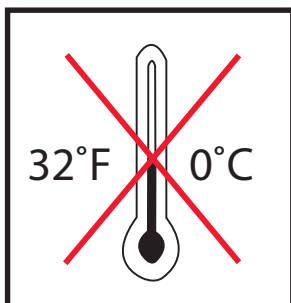
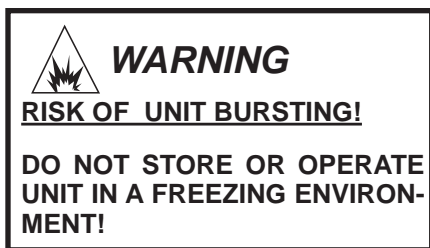
1. If any part of the pumping system becomes frozen; excessive pressure may build up in the unit which could cause the unit to burst resulting in possible serious injury to the operator or bystanders.
2. The pumping system in this unit may be permanently damaged if frozen. **FREEZE DAMAGE IS NOT COVERED BY WARRANTY.**

If you must store your unit in an area where the temperature may fall below 32°F, you can protect your unit by following the procedure outlined below.

1. Gather the following items:
 - a. Two 5 gallon containers.
 - b. One gallon of antifreeze. (Mi-T-M recommends an environmentally safe antifreeze.)
 - c. Water supply.
 - d. Three foot hose, 1/2-3/4 I.D. with a 3/4 inch male garden hose fitting.
2. Procedure:
 - a. To start winterizing, unit must be run and primed according to the "Start-up Procedures" listed on page 16.
 - b. After running and priming, shut off the unit and water supply.
 - c. Relieve system pressure by pointing the trigger gun in a safe direction and squeezing the trigger until water flow ceases to exit the nozzle.
 - d. Lock the trigger gun in an OFF position and remove the nozzle.
 - e. Remove the water supply hose from the unit and attach the 3 foot hose securely to the inlet connection.
 - f. Shut off the detergent injector if applicable.
 - g. Fill one 5 gallon bucket with water.
 - h. Holding the 3 foot hose in an upright position, completely fill the hose with water. Then plug the hose outlet with your thumb or finger. Place the plugged end into the 5 gallon bucket of water.
 - i. Turn the unit on. Trigger the gun several times until all the air is worked out of the system (unit is primed).

NOTE: Proper winterizing is based on the recommended manufacturer's instructions listed on the "Protection Chart" shown on the back label of most antifreeze containers.

CONTINUED



STORAGE & MAINTENANCE

WINTERIZING, CONT'D:

- j. With the trigger gun held open, siphon enough water out of the 5 gallon bucket until there is just enough water left to mix with the antifreeze.
 - k. Point the wand into the empty container and start the unit.
 - l. Trigger the gun until the antifreeze begins to exit the wand. Release the trigger for 3 seconds, then trigger the gun for 3 seconds. Continue cycling the gun several times until all the antifreeze mixture is siphoned from the container.
 - m. Detach the 3 foot hose from the unit and drain any excess antifreeze back into the 5 gallon container.
 - n. Disconnect the hose/gun/wand assembly from the unit and drain any excess antifreeze back into the 5 gallon container.
 - o. Store the hose, gun and wand with the unit in a safe area.
 - p. Store antifreeze solution for next use or dispose of according to state EPA laws.
3. Optional Procedure:
- a. Shut the unit off.
 - b. Relieve system pressure by pointing the trigger gun in a safe direction and squeezing the trigger until water flow ceases to exit the nozzle.
 - c. Disconnect and drain the hose, gun and wand.
 - d. Start the unit and allow it to run until all the water exits the unit. Once the water has stopped flowing from the unit, turn off.

NOTE: *When using this procedure, caution should be used as ice chips can form from drops of water which could cause the unit to burst if starting before completely thawed.*

STARTING UNIT AFTER EXTENDED STORAGE:

1. BE CERTAIN the unit is NOT plugged into the power source.
2. Prior to restarting the unit, thaw out any possible ice from the wand, gun, hose and unit.
3. After following all "PREPARATION" instructions, start the unit momentarily and immediately turn "OFF" to ensure all parts are lubricated before operation.

TROUBLESHOOTING

SYMPTOM	PROBABLE CAUSE	REMEDY
Pump motor will not start, or stops while operating.	GFCI tripped.	Turn unit "OFF". Test GFCI by pressing reset button.
	Loose or disconnected plug.	Reconnect plug.
	Circuit overload. Tripped circuit breaker or fuse blown in circuit fuse box.	Disconnect all other plugs on the circuit being used and reset circuit breaker OR check and replace fuse.
	Tripped circuit breaker in unit.	Allow to cool and restart unit.
	Motor overload.	Reset thermal overload button on pump motor or inside electrical control panel.
	Unit is frozen.	Allow to thaw. If any part of the unit becomes frozen; excessive pressure may build up in the unit which could cause the unit to burst resulting in possible serious injury to the operator or bystanders.
Circuit breaker trips or fuse blows in the	Circuit overload.	Ensure electrical supply is identical to the specifications listed on the pressure washer data plate. Disconnect all plugs on the circuit. When connecting to a circuit protected by fuses, use time delay fuses only.
	Extension cord is too long or wire is too small.	Electrical requirements on extension cord should comply with the specifications listed on the pressure washer data plate.
	Too much pressure.	Use Adjusting Knob on Unloader to reduce pressure.
GFCI trips.	Incorrect voltage.	Ensure electrical supply is identical to the specifications listed on the pressure washer data plate.
	Electrical short to ground.	Contact Customer Service
Motor runs but there is no discharge at nozzle when trigger mechanism is squeezed.	Water supply is not turned on.	Turn water supply completely on.
	Kink in water inlet hose.	Remove kink.
	Kink in high pressure discharge hose.	Replace hose.
Low or fluctuating pressure.	Water inlet screen obstructed.	Remove screen, clean or replace.
	Pump sucking air. (Prime lost)	Tighten all water intake connections. Eliminate leaks in intake line.
	Not in high pressure mode.	Insert high pressure nozzle.
	Obstructed or worn orifice.	Remove and clean, or replace.
	Damaged or obstructed valve assembly on pump.	Remove, clean or replace.
	Pump packings worn.	Replace packings.
	Unloader valve not operating correctly.	Repair or replace.

TROUBLESHOOTING

SYMPTOM	PROBABLE CAUSE	REMEDY
Water is leaking from Thermal Relief Valve.	Water inlet temperature is too high.	Incoming water temperature must be less than 140°.
	Water temperature in unit is too high.	Do not allow unit to operate in bypass mode (with the trigger gun closed) for more than three minutes.
	Defective valve.	Replace.
Oil appears milky or foamy.	Water in oil.	Change pump oil. Fill to proper level.
Oil leaking from unit.	Worn seals or o-rings.	Contact Customer Service.
Detergent will not siphon into Low Pressure Detergent mode.	Detergent strainer is not completely submerged in detergent solution	Check; submerge if necessary.
	Detergent strainer is obstructed.	Inspect, clean or replace.
	Detergent hose is obstructed, cut or kinked.	Inspect, clean or replace.
	Detergent adjusting knob turned to the closed position.	Open adjusting knob.
	Not in Low Pressure mode.	Insert 6540° (BLACK) nozzle.
	Nozzle assembly is plugged.	Clean or replace.
	Too many high pressure hose extensions attached to the water outlet.	Use one extension maximum.
Water flows back into detergent container.	Ball & Spring in detergent strainer stuck.	Remove, clean or replace.
	Ball & Spring in Venturi reversed, missing or corroded.	Remove, clean or replace.
Water flows from the nozzle when the trigger gun is in the "OFF" position.	Gun is malfunctioning.	Repair or replace.

ACCESSORIES

15-0006	Supply Hose ¾ in.
50-0136	Hose Reel 13 in. (Holds 100 ft. of Hose)
50-0143	Hose Reel Bracket (Mounts to Baseplate)
851-0007	3000 PSI Extension Hose 50 ft.
851-0006	4000 PSI Extension Hose 50 ft.
AW-3000-0000	Sandblaster Carbide Nozzle (Consult Factory)*
AW-3020-0000	Sandblaster Ceramic Nozzle (Consult Factory)*
AW-4085-0016	Pump Oil 16 oz.
AW-7003-1500	Rotary Brush
AW-7015-1200	Extension Wand 12 ft.
AW-7015-1800	Extension Wand 18 ft.
AW-7015-2400	Extension Wand 24 ft.
AW-7103-1800	Extension Wand 18 in.
AW-7103-3600	Extension Wand 36 in.
AW-7103-7200	Extension Wand 72 in.
AW-7300-0003	Rotating Nozzle #3.0 (Consult Factory)*
AW-7300-0035	Rotating Nozzle #3.5 (Consult Factory)*
AW-7300-0004	Rotating Nozzle #4.0 (Consult Factory)*
AW-7300-0045	Rotating Nozzle #4.5 (Consult Factory)*
AW-7300-0005	Rotating Nozzle #5.0 (Consult Factory)*

*PSI and GPM must be specified when ordering.

Mi-T-M All Purpose Cleaner, Paint Surface Prep, House and Deck Wash, and Heavy Duty Degreaser are specially formulated detergents for use with all Mi-T-M pressure washers and are packaged in one (1), five (5), and fifty-five (55) gallon containers. Contact Mi-T-M Customer Service Department at (800) 553-9053 for more information.

