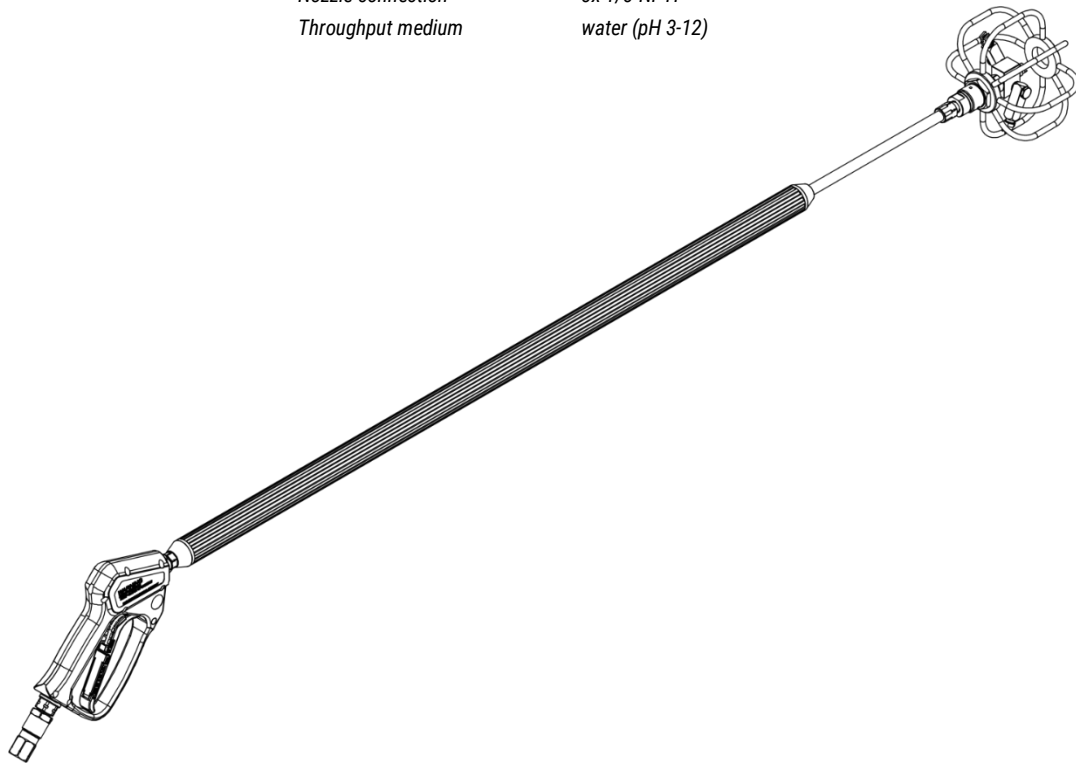


Cleaning-Lance

**Technical Data**

Pressure	4000psi (27.5Mpa)
Temperature	250°F
RPM	max. 2000 rpm
Rotor guard	ø6"
Water connection	3/8"NPTF
Nozzle connection	3x 1/8"NPTF
Throughput medium	water (pH 3-12)



**Indication:** (original language German)

- Read all instructions, check overall conditions and safety requirements before initial operation of the product.
- Our product should only be installed by experienced users of high pressure equipment.
- Safety regulations and guidelines (Accident Prevention Rules) from the manufacturer of your high pressure cleaner are applicable.
- Nozzle installation according to Nozzle manufacturer.
- No modifications to the product are permitted.

**⚠ Caution:**

- Always use protection gear when using products connected to high pressure.
- Before any maintenance or nozzle-change, turn off the high pressure water supply, e.g.: turn off and secure the power switch.
- After turning off the system, allow all selfpropelled equipment to come to a complete stop before handling. Risk of injury due the rotor-arm.

**⚠ Warning:**

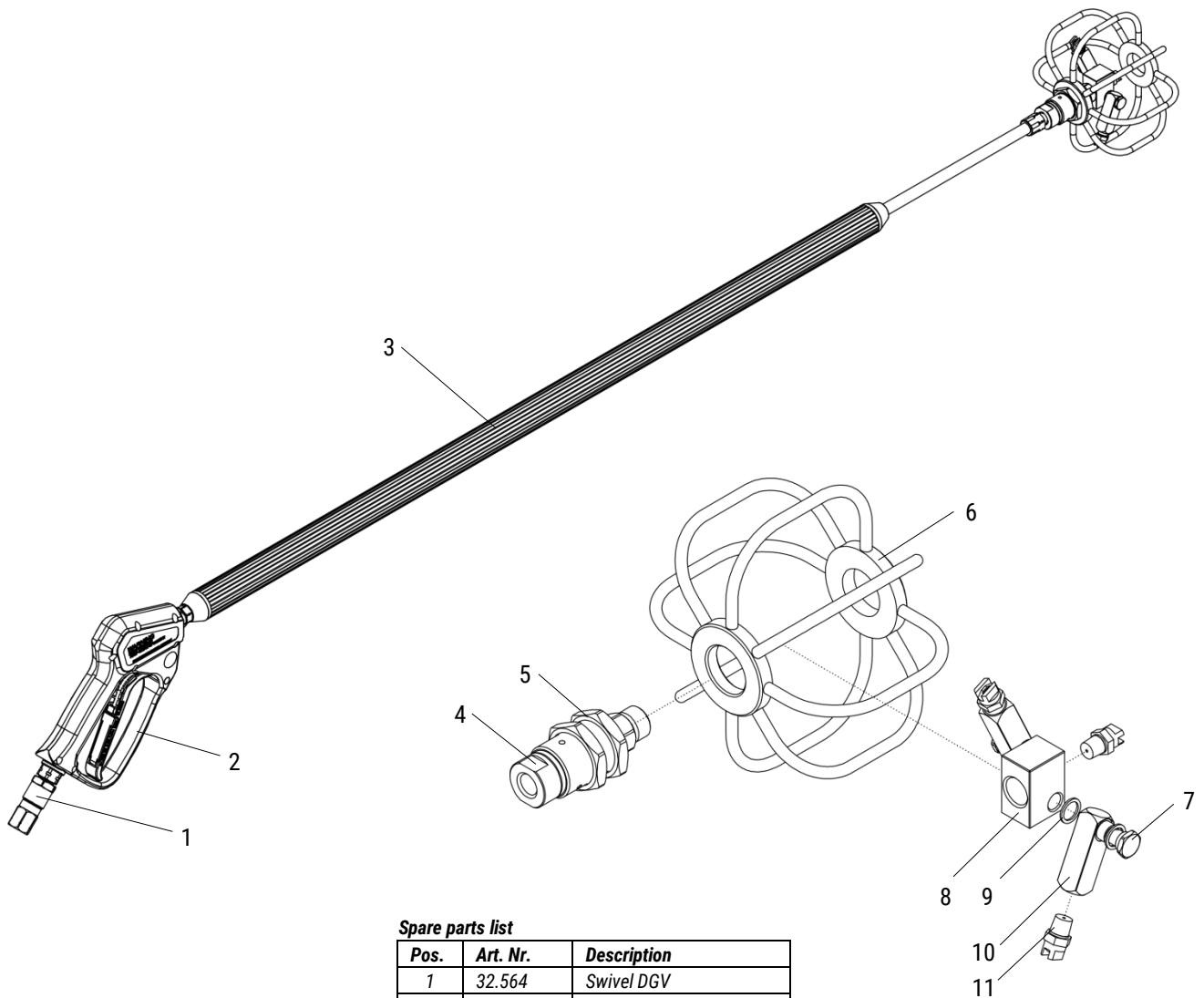
- Never direct any high pressure water-jet at humans, animals or electric installations.
- Put the product into operation only if it is in the container.
- Do not touch the rotor-arm during operation. Risk of injury.

<b>CE</b>	<b>Declaration of Conformity</b> Pressure Equipment Directive 97/23/EC Annex III.
	<p>Manufacturer: <b>Mosmatic AG</b> Oberhellenschwilerstrasse 6 CH - 9126 Necker Switzerland Phone: +41 (0) 71 375 64 64 Internet: www.mosmatic.com</p> <p>We hereby declare that the product listed below based on the conception, design and construction in the design as we launch the product, conclusively at the time of the declaration applicable alterations, conforms to the safety requirements of the Pressure Equipment Directive.</p> <p>Product Description: High Pressure Accessories</p> <p>Type: FL / DR / SPI / TYR / WB / HUR</p> <p>Product Characteristics: Pressure Equipment Directive 97/23/EC Article 3 / Number 1.3 / Letter a) / Second dash Article 3 / Number 1.3 / Letter b) / Second dash Fluid Group 2</p> <p>Applied Conformity Assessment Procedure: Directive 97/23/EC Module H (Full Quality Assurance)</p> <p>EC Standard Guidelines: Machinery Directive 2006/42/EG Pressure Equipment Directive 97/23/EC</p> <p>Applied Harmonized Standards: ISO 12100:2011 - Safety of Machinery ISO 9001:2008 - Quality Management System</p> <p>Authorised Person: Patrick Rieben</p> <p>By any modification from the product, alterations on the product or the fitting of non-approved spares is the validity of the declaration of conformity with immediately effective terminated.</p> <p style="text-align: right;">Signature: </p> <p>Necker, 2016</p>

**Cleaning-Lance**

**Assembly instructions** (original language German)

1. Screw the nozzles (11) into the housing (10).
2. Secure the housing (10) with the hollow screw (7) to the desired operating position. (tightening torque 25-30Nm)
3. Turn the adjustable rotor guard (6) to the desired operating position and secure with nut (5) tightly.
4. Fasten tightly the high pressure hose or pipe connection to the swivel (1) coming from the high pressure pump.



**Spare parts list**

Pos.	Art. Nr.	Description
1	32.564	Swivel DGV
2	29.081	HP-gun (5000psi)
3	26.412	Lance
4	57.063	Swivel DYG
5	900.975	Nut (M28x1.5-F)
6	905.187	Rotor guard
7	900.171	Hollow screw
8	900.566	Distributor
9	900.170	Seal ring
10	900.175	Housing
11	0502	HP-nozzle (0502)