



## USER MANUAL

### FOAM JET KIT – Part Number 14.0289






#### Technical data:

max Pressure	5000 psi
max Flow	5.6 USgpm
max Temperature	140 °F

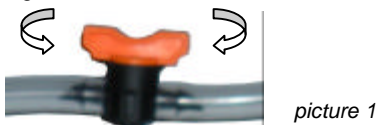
**OVER 20 FEET  
 OF DENSE FOAM JET  
 DETERGENT SUCTION POWER  
 EVEN OVER 33 FEET HEIGHT**

#### Product preparation

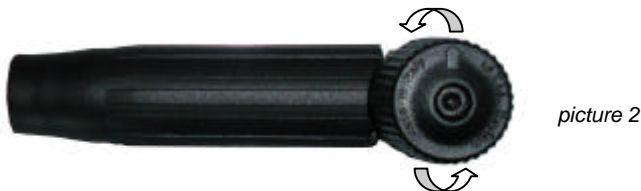
<p>1) Properly assembly one of the following nozzles (supplied with the kit) on the base of your pressure washer rating :</p> <ul style="list-style-type: none"> <li>o Part # 36.0227 S.Steel nozzle Ø1,25mm – 3.5 for 3000 psi Pressure Washers</li> <li>o Part # 36.0235 S.Steel nozzle Ø1,50mm – 5.0 for 4000 psi Pressure Washers</li> <li>o Part # 36.0236 S.Steel nozzle Ø1,70mm – 6.5 for 5000 psi Pressure Washers</li> </ul>	
<p>2) Screw the Foam Jet inlet into the outlet of your pressure washer (gun, lance, hose etc.)</p>	<p>3) Put the end of the suction hose with filter into your chemical container.</p> 
<p>4) Take the suction hose and push the open end of the hose onto the brass hose barb.</p>	<p>5) Make sure that the shut off valve is in the OFF position before you begin using the tool.</p> 

#### Product use:

With the pressure washer on, you can now apply chemicals by turning the shut off valve to the ON position (picture 1); please consider that with the total opening of the shut off valve, the suction is around 0.26 USgpm.



Turning the upper handle (picture 2) you can regulate the air, water and chemical mix, in order to adjust the foam density.



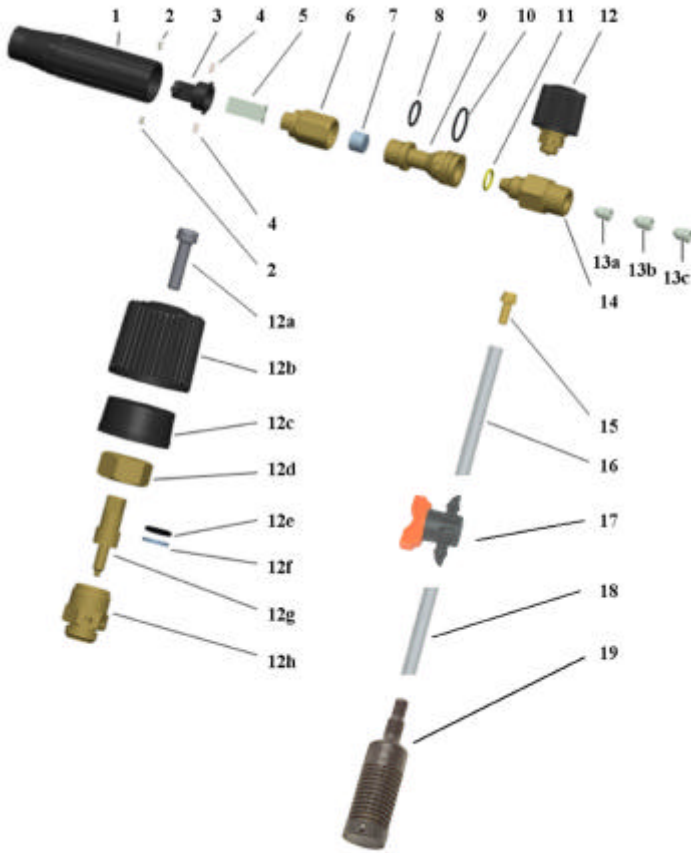
Turning the outlet handle you can go from a fan-jet (picture 3) to a pin-jet (picture 4).



**WARNING:** rinse with clear water after use every day to keep the Foam Jet Kit clean and grant smooth functioning



## Exploded view and components list



Pos.	Q.ty	Part Number	Description
1	1	37.0219	Outlet handle
2	2	38.0121	Screw M3x5
3	1	37.0217	Deflector
4	2	36.0140	Pin 3x8
5	1	36.0138	S.Steel direct/fan plate
6	1	35.0289	Deflector coupling
7	1	36.0226	Stainless steel filter
8	1	39.0016	O-ring 2062
9	1	35.0290	Middle body
10	1	39.0321	O-ring 2087
11	1	39.0014	O-ring 2050
12	1	-	Air intake mechanical part
12a	1	38.0115	Screw M5x20
12b	1	37.0154	Upper handle
12c	1	37.0156	Upper handle holder
12d	1	35.0296	Plunger nut
12e	1	39.0144	O-ring 2031
12f	1	35.0295	Plunger washer
12g	1	35.0294	Plunger
12h	1	35.0293	Plunger coupling
13a	1	36.0227	S.Steel nozzle 1.25 mm – 3.5
13b	1	36.0235	S.Steel nozzle 1.5 mm – 5.0
13c	1	36.0236	S.Steel nozzle 1.7 mm – 6.5
14	1	35.0291	Brass central body
15	1	24.0372	Hose barb 6 mm ¼ BSP
16	1	41.0340	31' Suction hose
17	1	20.0089	Shut off valve
18	1	41.0341	3' Suction hose
19	1	23.0002	Plastic chemical filter

## WARNING

When using this product always exercise basic safety precautions, including the following:

- The FOAM JET KIT must be properly installed in accordance with the installation instructions provided.
- This is a high pressure spraying system tool; water and chemicals under high pressure, can cause severe injury if not properly used. To prevent injury, do not point the product at any part of your body or at any other person when in operation; the pressure from your machine can cut skin and cause burns. Keep all persons away from the pressure washing machine and the spray area of the product.
- Make sure that the product is securely connected to your pressure washer machine.
- Do not climb on ladders when using this tool.
- If water should stop flowing from the product, turn unit off immediately; make sure all pressure is off of the pressure washing hose and gun before you disconnect the tool.
- Always follow OSHA regulation when using a pressure washer.
- Always use genuine MTM Hydro INC parts for replacement

MTM Hydro INC ASSUMES NO LIABILITY IN CLEANING OR CHEMICAL APPLICATIONS WITH OR WITHOUT USING THE FOAM JET KIT

