

Component Identification

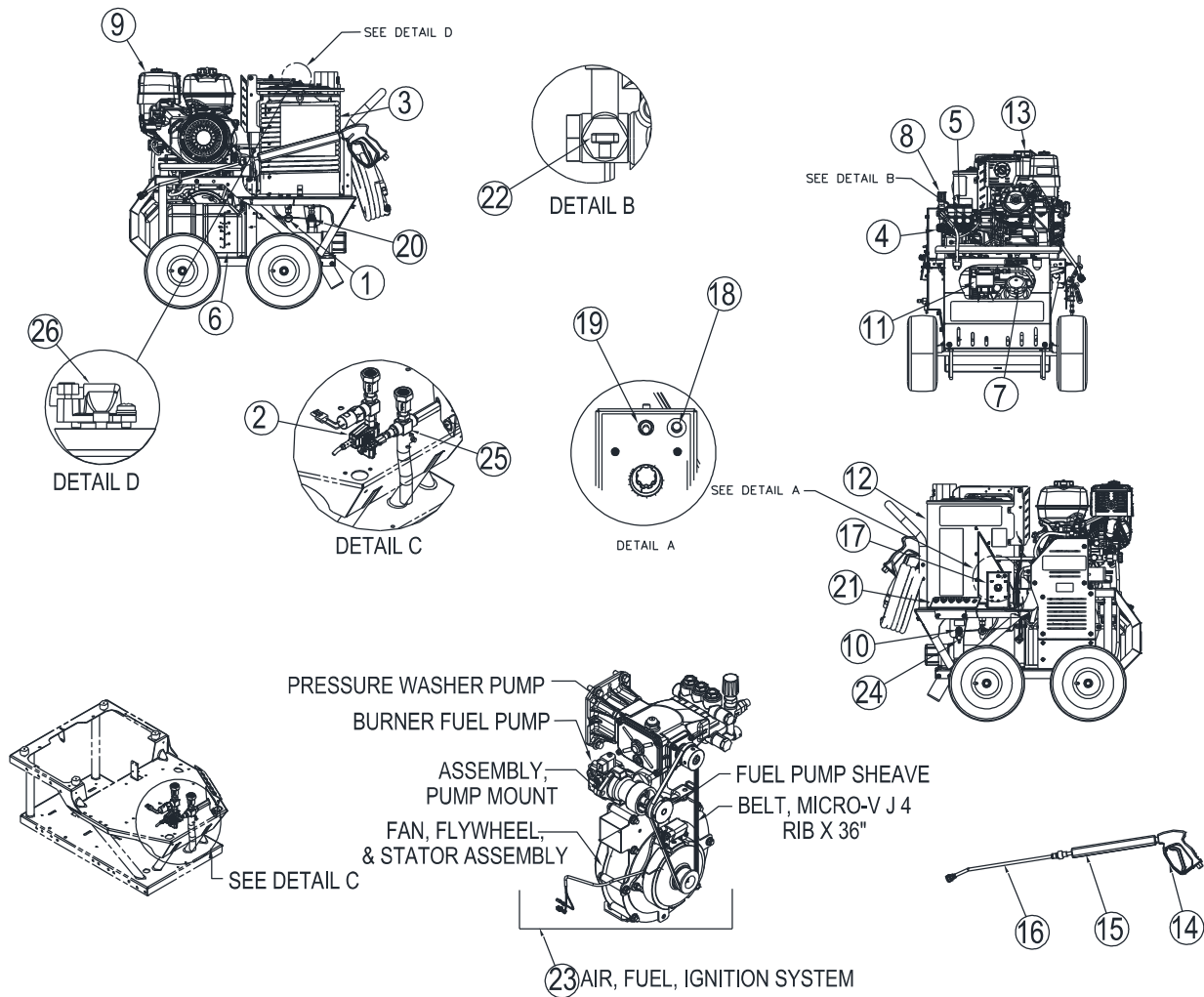


Fig157115_1

| Ref # | Description | Ref # | Description | Ref # | Description |
|-------|-------------------------|-------|-----------------------------|-------|----------------------------|
| 1 | High PSI limit switch | 10 | High Pressure Outlet | 19 | Heat Switch |
| 2 | Flow Switch | 11 | Fuel Filter/Water Separator | 20 | High-Temp. Limit Switch |
| 3 | Heating Coil | 12 | Heat Exchanger | 21 | Nozzle Storage |
| 4 | Garden Hose Water Inlet | 13 | Gas Tank & Cap | 22 | Thermal Relief Valve |
| 5 | Pump | 14 | Spray Gun | 23 | Air, Fuel, Ignition System |
| 6 | Diesel Fuel Tank | 15 | Grip | 24 | Chemical injector |
| 7 | Diesel Fuel Cap | 16 | Wand | 25 | Rupture Disc Fitting |
| 8 | Unloader | 17 | Control Box (See Detail A) | 26 | Flame Sensor |
| 9 | Engine | 18 | Circuit Protector | | |

Component Identification cont'd

| REFERENCE GUIDE | |
|--|--|
| 1. High, PSI limit switch | This is a backup safety feature, if the system pressure exceeds the set pressure this device will stop the burner from firing. |
| 2. Flow Switch | Mechanical device that senses water flow |
| 3. Heating Coil | Steel piping wound together with an inlet for incoming cold water and outlet for hot water to exit. |
| 4. Garden Hose Water Inlet | Means of connecting garden hose to pump inlet. Connect garden hose here. |
| 5. Pump | A device that moves fluid through a combination of suction and displacement. |
| 6. Diesel Fuel Tank | Fuel storage container for diesel fuels. |
| 7. Diesel Fuel Cap | Vented cover for fuel tank. |
| 8. Unloader | Valve that regulates pressure and directs flow into bypass when trigger is closed. |
| 9. Engine | The air-cooled engine powers the pump. |
| 10. High Pressure Outlet | Connection point for the high-pressure hose. |
| 11. Fuel Filter / Water Separator | Filter in fuel line that removes water and screens out dirt and debris from fuel. |
| 12. Heat Exchanger | Device that heats the water by forcing a flame across steel pipe. |
| 13. Gas Tank & Cap | Gas tank is a container for holding gas and gas cap is cover for gas tank. |
| 14. Spray Gun | Used to divert water out to nozzle. |
| 15. Grip | Section of wand to extend length and provide stability. |
| 16. Wand | Rod to extend length. |
| 17. Control Box | Housing device for mounting switches and machine controls. |
| 18. Circuit Breaker | Device for protecting circuit from damage if overloaded or shorted. |
| 19. Heat Switch | Acts as an on/off device for power to burner components. |
| 20. High-Temp Limit Switch | Control Device that limits the water temperature. |
| 21. Nozzle Storage | A space for storing nozzles. |
| 22. Thermal Relief Valve | Safety device that discharges hot water from the pump manifold during long bypass operation. |
| 23. Air, Fuel, Ignition System | System provides air, fuel, and ignition for combustion |
| 24. Chemical Injector | Siphons cleaning chemicals into a low pressure washer spray downstream of the pump. |
| 25. Rupture Disc | Safety device that will open and relieve excess system pressure |
| 26. Flame Sensor | Device for sensing if the burner has a flame |

Safety Labeling

WARNING

Burn Hazard
Do not touch hot muffler. Muffler may be hot even if the unit is stopped. Allow unit to cool before servicing.

788936

WARNING

BURN HAZARD
Do not touch hot surface.

797513

WARNING

SCALE BUILD-UP/EXPLOSION HAZARD

- Failure to properly maintain the coil can result in a steam explosion.
- Scale or lime build-up will act as an insulator and decrease coil efficiency.
- Weakening of the coil tube due to hot spots can result in a coil rupture.

CHEMICAL EXPOSURE HAZARD

- Always wear properly rated safety goggles when descaling the coil.
- Always wear rubber gloves when handling coil cleaning chemical.
- Understand all safety hazards and first aid measures for coil cleaning chemical being used.
- Follow coil cleaning chemical manufacturer's directions when handling, mixing and using coil cleaning chemical.

Read owner's manual. See maintenance section of manual for descaling procedure. Read the coil cleaning chemical safety information. Serious injury or death can result if safety instructions are not followed.

8220

DANGER

FOR OUTDOOR USE ONLY! Using this pressure washer indoors CAN KILL. YOU IN MINUTES. Engine exhaust and burner exhaust contain carbon monoxide. This is a poison you cannot see or smell.

NEVER use inside any building, structure or garage. EVEN IF doors and windows are open. Only use OUTSIDE and far away from windows, doors, and vents.

WARNING

High Pressure Fluid Forces / Burn Hazard
High pressure spray can cause injection injury, eye injury, and loss of balance. Hot discharge fluid and hot surfaces can burn.

- NEVER direct discharge stream at or near any person. Do not allow any part of the body to come in contact with the fluid stream.
- Gun locks back - hold with two hands. Keep good footing and balance at all times.
- Surfaces of engine, burner, and wand can become very hot. Use only designated gripping area of wand. Avoid contact with hot engine and burner.

Fire / Explosion Hazard
Spraying flammables can cause explosion. Fuel is flammable and explosive. Exhaust can ignite combustible materials.

- NEVER spray flammable liquids. Operate only where open flame or heat is permitted.
- NEVER fuel a running or hot engine or oil burner.
- Ensure there are no fuel leaks before starting. Keep sources of sparks and flames away.
- Use approved container only for transferring fuel. Clean up fuel spills immediately.
- Keep engine and burner exhaust at least 7 feet from all combustible objects. Situate on heat-resistant flooring when using burner.

Chemical Exposure Hazard

- Understand all safety hazards and first aid measures for chemicals being used.
- Follow chemical manufacturer's directions when handling and cleaning with chemicals. Wear safety gear as directed.

Electric Shock Hazard
Keep spray away from electrical wiring, or electric shock / electrocution could occur.

CAUTION: To Reduce Risk of Injury, Read Operating Instructions Carefully Before Using.

WARNING

ROTATING MACHINERY
Clothing or hair can become rapidly entangled in unguarded rotating parts, resulting in serious injury or death.

DO NOT operate without power transmission belt guard in place.

WARNING

IF RUPTURE DISK ACTIVATES AND RELEASES WATER:

- Turn heat switch OFF
- Turn power switch OFF
- Turn water supply OFF
- Pull spray gun trigger to release pressure
- Unplug pressure washer, or remove the spark plug wire

Do not use pressure washer until Product Support arranges for repair or replacement. Failure to turn off immediately could result in serious injury.

Call 1-800-270-0810

WARNING

Recoil starter rope can retract rapidly resulting in bodily injury. ALWAYS relieve spray gun pressure before pulling recoil starter rope. Pull starter rope slowly until resistance is felt, then pull rapidly.

801160

For questions, replacement parts or labels contact product support at www.northstar.com or call 1-800-270-0810.

Fig157115_3

Always make sure safety labels are in place and in good condition. If a safety label is missing or not legible, order new labels or unsafe operation could result. To order replacement safety labels, call NorthStar Product Support at 1-800-270-0810.

| Ref.# | Part # | Description | Qty. |
|-------|--------|-----------------------------------|------|
| 1 | 782325 | Decal, Danger and Warning | 1 |
| 2 | 786632 | Decal, Rotating Equipment Warning | 1 |
| 3 | 798057 | Hangtag, Rupture Disk Warning | 1 |
| 3.1 | 32821 | Lanyard, Hangtag Warning | 1 |
| 4 | 797513 | Decal, Burn Hazard Decal | 1 |
| 5 | 788936 | Decal, Burn Hazard Warning | 1 |
| 6 | 801160 | Decal, Recoil Warning | 1 |
| 7 | 802203 | Decal, Descaling Warning | 1 |