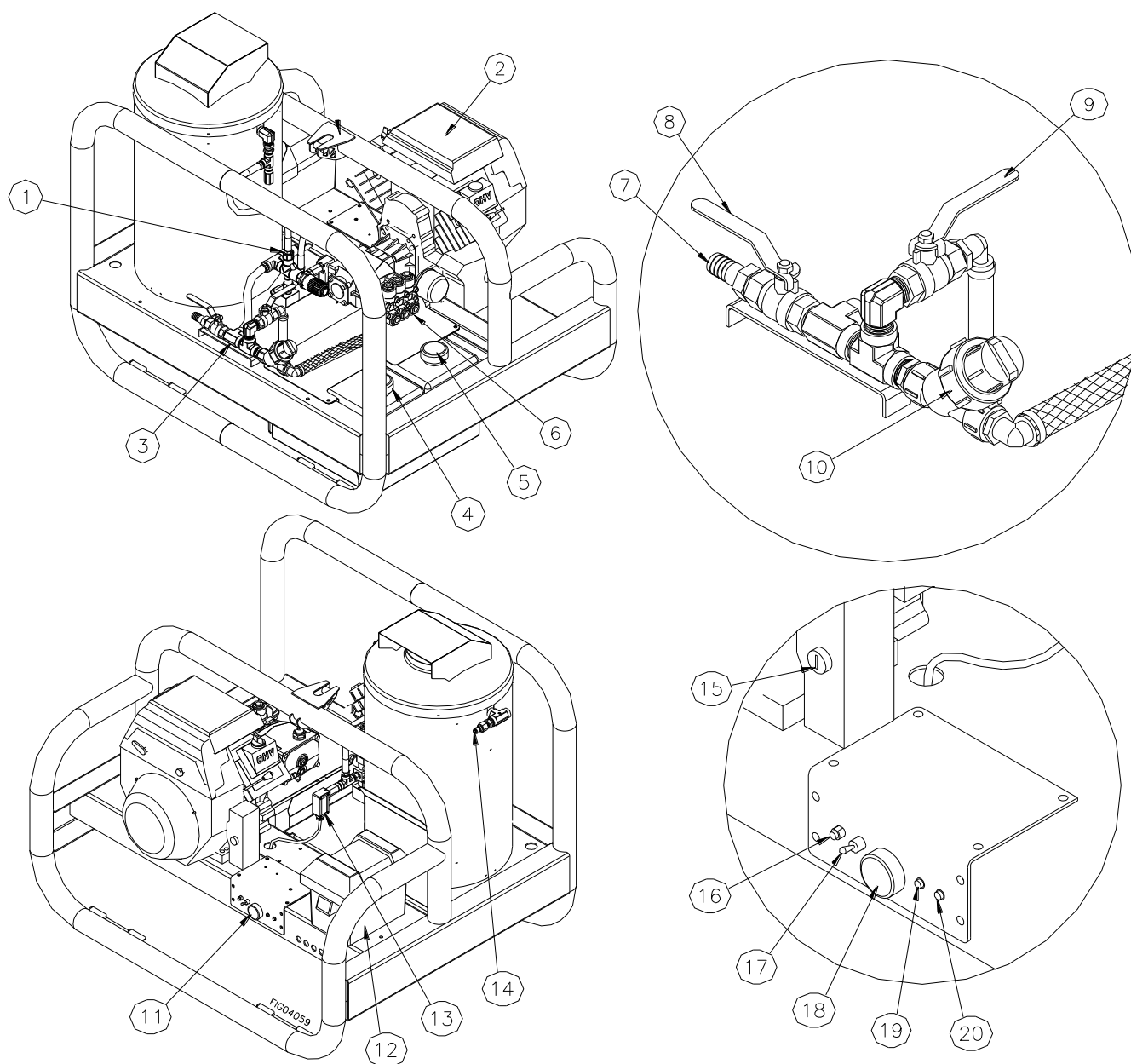


Component Identification

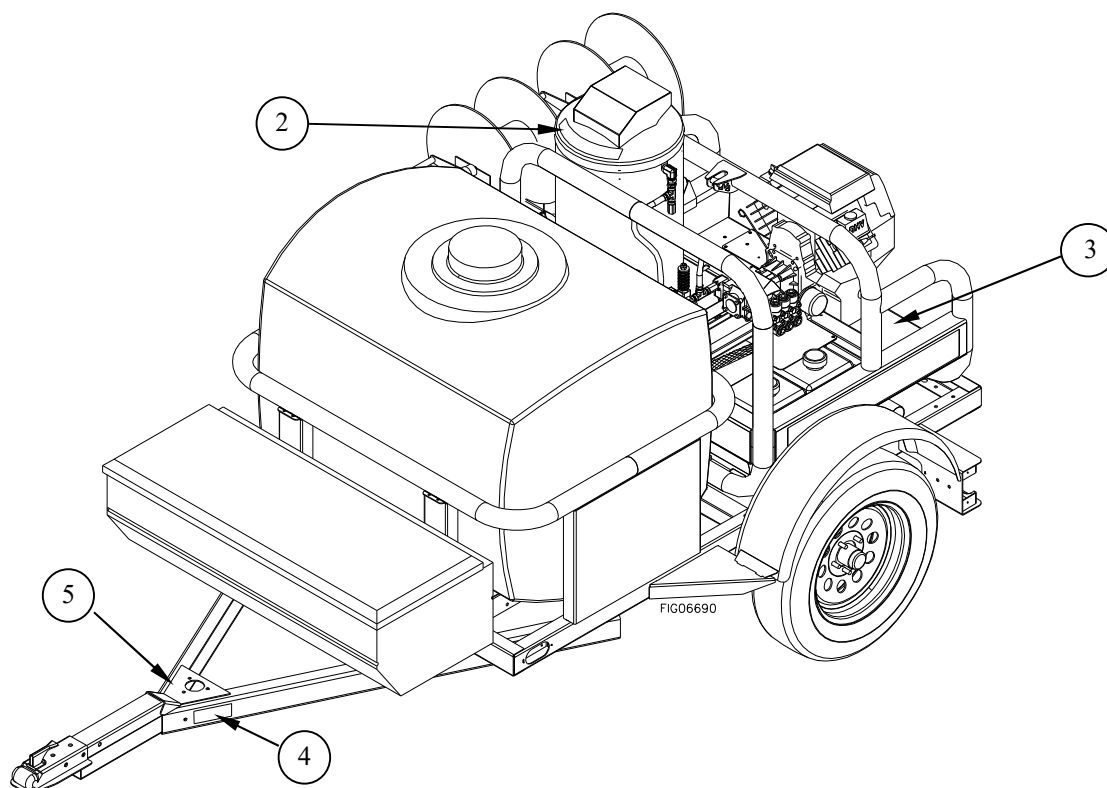
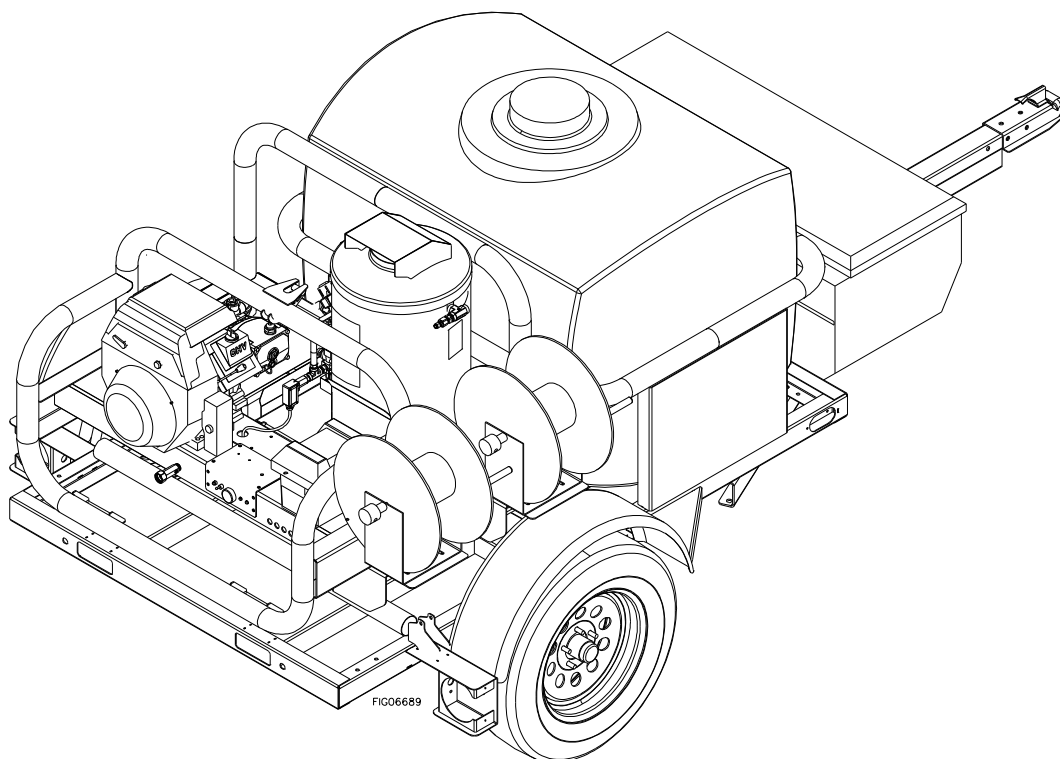


Ref #	Description	Ref #	Description	Ref #	Description
1	Unloader	8	Ball Valve (feed tank)	15	Engine Key Switch
2	Engine (see engine manual)	9	Ball Valve (city tap water)	16	Circuit Breaker
3	Inlet Plumbing	10	Water Filter	17	Heat Switch
4	Diesel Tank	11	Control Panel	18	Thermostat
5	Gasoline Tank	12	Battery Box (battery not included)	19	Indicator Light (pressure sw.)
6	Pump	13	Pressure Switch	20	Indicator Light (thermostat)
7	Water Inlet (feed tank)	14	Water Outlet (high pressure)		

Component Identification

REFERENCE GUIDE	
1. Unloader	Valve that regulates pressure and directs flow into bypass when trigger is closed.
2. Engine	The air-cooled engine powers the pump.
3. Inlet Plumbing	Means of connecting garden hose to pump inlet.
4. Diesel Tank	Diesel fuel storage container.
5. Gasoline Tank	Gasoline fuel storage container.
6. Pump	A device that moves fluid through a combination of suction and displacement.
7. Water Inlet (feed tank)	Used to connect water from the feed tank to the inlet plumbing.
8. Ball Valve (feed tank)	Used to open or close the water line from feed tank.
9. Ball Valve (city tap water)	Used to open or close the water line from city tap.
10. Water Filter	Filters water prior to entering the pump.
11. Control Panel	Flat surface for mounting switches.
12. Battery Box	Storage place to house the battery.
13. Pressure Switch	Controls burner.
14. Water Outlet	Connect high pressure hose here.
15. Engine Key Switch	Start engine by turning clockwise.
16. Circuit Breaker	Push to reset circuit breaker to protect against electrical overloads.
17. Heat Switch	On/off device for power to burner components.
18. Thermostat	Adjust the water temperature.
19. Indicator Light (pressure switch)	Instrument used to monitor unit operation. Should be illuminated when the gun is in use.
20. Indicator Light (thermostat)	Instrument used to monitor unit operation. Should be illuminated when the gun is in use and the burner is firing.

Safety Labeling



Always make sure safety labels are in place and in good condition. If a safety label is missing or not legible, order new labels or unsafe operation could result. **To order replacement safety labels, call NorthStar Product Support at 1-800-270-0810.**

Safety Labeling

4

MOVING/TOWING INSTRUCTIONS

Moving trailer by hand:

- Attach caster wheel to jack.
- Crank jack down.
- Do not attempt to move trailer up or down slope by hand.

Towing trailer:

- Latch coupler securely to class 3 or higher hitch with 2" ball.
- Make sure hitched trailer sits level.
- Crank jack to UP position and remove caster wheel.
- Attach safety chains to the tow vehicle.
- Check local, state and federal requirements before towing on public roads.

5

WARNING

Be aware that vehicle handling will be affected when towing the filled pressure washer. Pulling a trailer requires special driving skills. Exercise caution to avoid loss of control or pressure washer overturning.



- Keep speed to a minimum so you can maintain control at all times. Reduce speed prior to turns.
- Allow for wider turns and for more distance to stop.
- Avoid any sudden steering maneuvers, starts, or stops that could create sway.
- Slow down and exercise extra caution on rough or sloped terrain in order to reduce risk of rollover.
- Be aware of the added length of the pressure washer.
- Be aware that visibility may be reduced with pressure washer attached. Be extra cautious when backing up or turning.
- If towing on a public road, make sure to comply with all local, state, and federal towing requirements.

See additional safety rules in the Operator's Manual.

1

⚠ DANGER

FOR OUTDOOR USE ONLY! Using this pressure washer indoors CAN KILL YOU IN MINUTES. Engine exhaust and burner exhaust contain carbon monoxide. This is a poison you cannot see or smell.

NEVER use inside any building, structure or garage, EVEN IF doors and windows are open. Only use OUTSIDE and far away from windows, doors, and vents.

⚠ WARNING

High Pressure Fluid Forces / Burn Hazards

High pressure spray can cause injection injury, eye injury, and loss of balance. Hot discharge fluid and hot surfaces can burn.

- NEVER direct discharge stream at or near any person. Do not allow any part of the body to come in contact with the fluid stream.
- Gun kicks back - hold with two hands. Keep good footing and balance at all times.
- Surfaces of engine, burner, and wand can become very hot. Use only designated gripping area of wand. Avoid contact with hot engine and burner.

Fire / Explosion Hazard

Spraying flammables can cause explosion. Fuel is flammable and explosive. Exhaust can ignite combustible materials.

- NEVER spray flammable liquids. Operate only where open flame or torch is permitted.
- NEVER fuel a running or hot engine or oil burner.
- Ensure there are no fuel leaks before starting. Keep sources of sparks and flames away.
- Use approved container only for transferring fuel. Clean up fuel spills immediately.
- Keep engine and burner exhaust at least 7 feet from all combustible objects. Situate on heat-resistant flooring when using burner.

Chemical Exposure Hazard

- Understand all safety hazards and first aid measures for chemicals being used.
- Follow chemical manufacturer's directions when handling and cleaning with chemicals. Wear safety gear as directed.

Electric Shock Hazard

Keep spray away from electrical wiring, or electric shock / electrocution could occur.

CAUTION: To Reduce Risk of Injury, Read Operating Instructions Carefully Before Using.

6

⚠ WARNING - BATTERY HAZARDS

BATTERIES:

- 1) contain caustic acid,
- 2) emit explosive gases,
- 3) can cause electric shock

- ALWAYS use eye protection. Caustic acid and explosive gases can cause blindness or severe burns.
- NO smoking, sparks, or flames.
- NEVER touch both battery terminals at the same time with your hand or any non-insulated tools.
- FLUSH immediately with water if battery acid contacts eyes, skin, or clothing.
- CONNECT cables in correct sequence: FIRST RED to POSITIVE terminal, then BLACK to NEGATIVE terminal. When disconnecting, DISCONNECT BLACK cable first, then RED.
- NEVER charge a visibly damaged or frozen battery. ALWAYS read and follow charger instructions.

FIG03335

7

⚠ WARNING

IF RUPTURE DISK ACTIVATES AND RELEASES WATER:

- Turn heat switch OFF
- Turn power switch OFF
- Turn water supply OFF
- Pull spray gun trigger to release pressure
- Unplug pressure washer, or remove the spark plug wire

Do not use pressure washer until Product Support arranges for repair or replacement.

Failure to turn off immediately could result in serious injury.

Call 1-800-270-0810

3

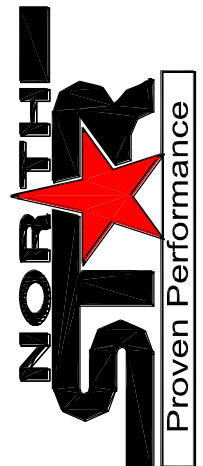
WARNING

- RISK OF ELECTRIC SHOCK. Do not discharge stream at pressure washer.
- Risk of injection or severe injury to persons. Keep clear of nozzle. Do not touch discharge stream or burner. This machine is to be used only by qualified operators.
- Risk of explosion. Operate only where open flame or torch is permitted.
- Risk of explosion. Do not hold both the product is operating or still hot.
- Can kick back. Hold with two hands.
- Hot discharge fluid. Do not touch or direct discharge stream at persons.
- Hot surfaces. Do not touch engine, burner, or wand.
- Risk of fire. Do not spray flammable liquids.
- Risk of electrocution. Do not spray electrical equipment.
- To reduce the risk of injury, read operating instructions carefully before using.

OPERATING INSTRUCTIONS:

- SHUT-DOWN**
1. Turn HEAT switch OFF.
 2. Spray cold water for two minutes.
 3. Turn engine on-off switch to OFF position.
 4. Turn gas line valve to OFF position.
 5. Turn water supply OFF.
 6. Turn trigger gun to relieve system pressure.
- START-UP**
1. Attach garden hose or water tank supply hose.
 2. Attach pressure hose.
 3. Attach gun and lance.
 4. Attach water supply valve.
 5. For cold engine, move trigger until air is purged.
 6. Turn engine on.
 7. Insert nozzle for high pressure spray.
 8. Turn HEAT switch ON for hot mode.

POWERED by
Honda
Engines



2

⚠ CAUTION HOT!