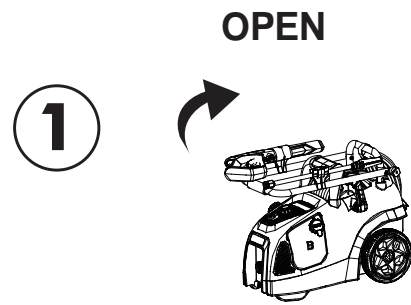
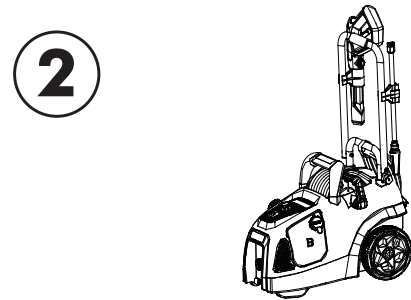


FOLD HANDLE

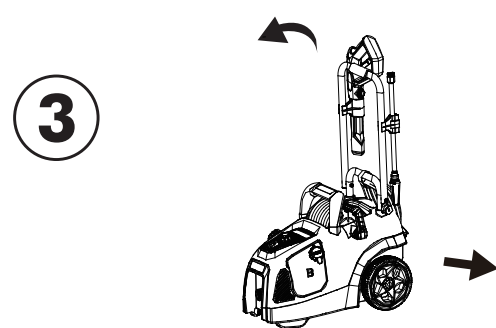


- Open for use: Lift up on the handle bar pivoting it towards the back into an upright position until it clicks and locks into place.

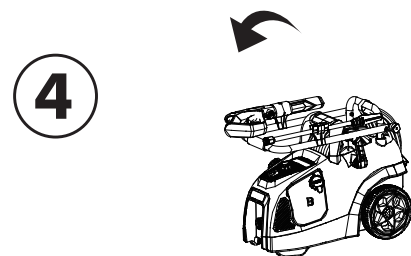


- Orientate the handle assembly into the holder as shown.

CLOSE



- Close for storage: Pull out on the locking pin at base of handle. Fold handle bar forward to front of unit.



- Orientate the handle assembly as shown.



WARNING: This Quick Start Guide is not a substitute for reading the operator's manual. To reduce the risk of injury or death, user must read and understand operator's manual before using this product.

powerworks™

QUICK START GUIDE

1700 PSI ELECTRIC PRESSURE WASHER






Model #: 51102

NOTE:

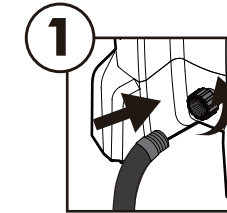
AUTO ON/OFF SWITCH: This Pressure washer is equipped with an Auto Start/Stop feature.

To operate: Press power switch On (I). Pump will pressurize and shut down immediately.

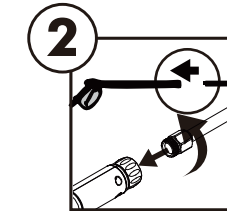
Once the trigger of the gun is depressed the unit will turn on. Unit will shut off and be in standby mode when trigger is released.

PRESSURE TIP	PRESSURE TIP APPLICATION
 0°	Red -Stream nozzle (0°) The Red 0 degree tip provides a straight line of spray. It provides the highest amount of pressure. It is best used for removing hard, stuck-on grime or dirt.
 25°	Green - Narrow fan tip (25°) The Green pressure washer tip provides high versatility with its 25 degree angle tip. Referred to as the washing tip, because it provides adequate pressure to remove dirt from surfaces, but is designed to not damage many surfaces. This pressure washer tip is designed for "sweeping" foliage or debris given its wide angle. This tip is versatile due to its wide area of cleaning and strong pressure application.
 40°	White - Wide fan tip (40°) The white 40 degree tip, referred to as the "fan" tip creates the widest area of cleaning with relatively low pressure. This pressure washer tip is best used for light or delicate cleaning applications. It is recommended for light cleaning on wood decks and other soft or delicate surfaces.
 SOAP	Black - Soap nozzle tip The black soap degree tip, referred to as the low pressure nozzle. This is for use with soap application. Soap is applied under low pressure high volume for optimum performance. Soap cannot be applied under high pressure with this machine. For Soap application: Fill the soap tank with detergent and connect the black soap tip to the wand. Soap will only be dispersed if the Black soap tip is connected to the wand.
	Turbo Nozzle Tip The nozzle rotates in a zero to 15 degree spray pattern in a circular motion to break down tough dirt and grime. The spray pattern can cover area of 4 to 8 inches wide, depending on a distance between the tip and the surface being cleaned.

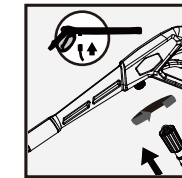
Set-up



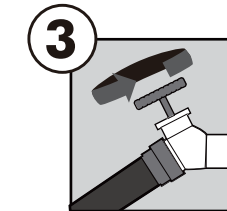
Connect garden hose to pressure washer water intake.



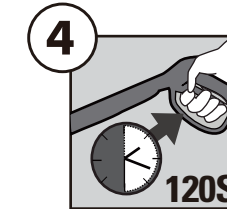
Assemble pressure washer gun top half to bottom half



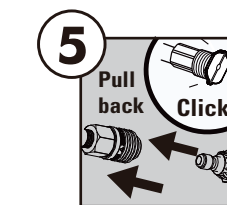
2a) Connect the high pressure hose to the trigger handle. Refer to manual for further details.



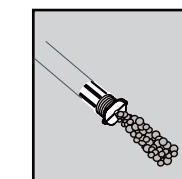
Turn on water at outlet



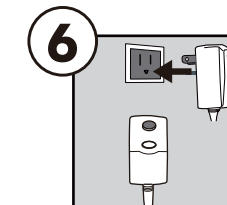
Run water hose for 120 seconds with the motor in OFF position. This helps drain air from the tank and lines.



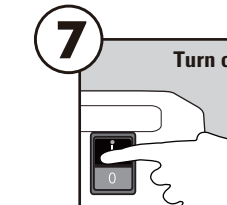
5a) Connect desired pressure tip



5b) Connect black soap tip and fill detergent bottle. Soap will come out only when using the black soap tip.



Connect power cord directly to wall outlet. Do not use an extension cord.



Turn on Pressure Washer
IMPORTANT: Ensure both of water outlet and trigger gun at "On" to avoid damage to the pump.

Missing parts, accessories or need a service center?

Do Not Return to Store
Call : 1-888-909-6757
www.GreenWorksTools.com

Rev:03 Printed in China

