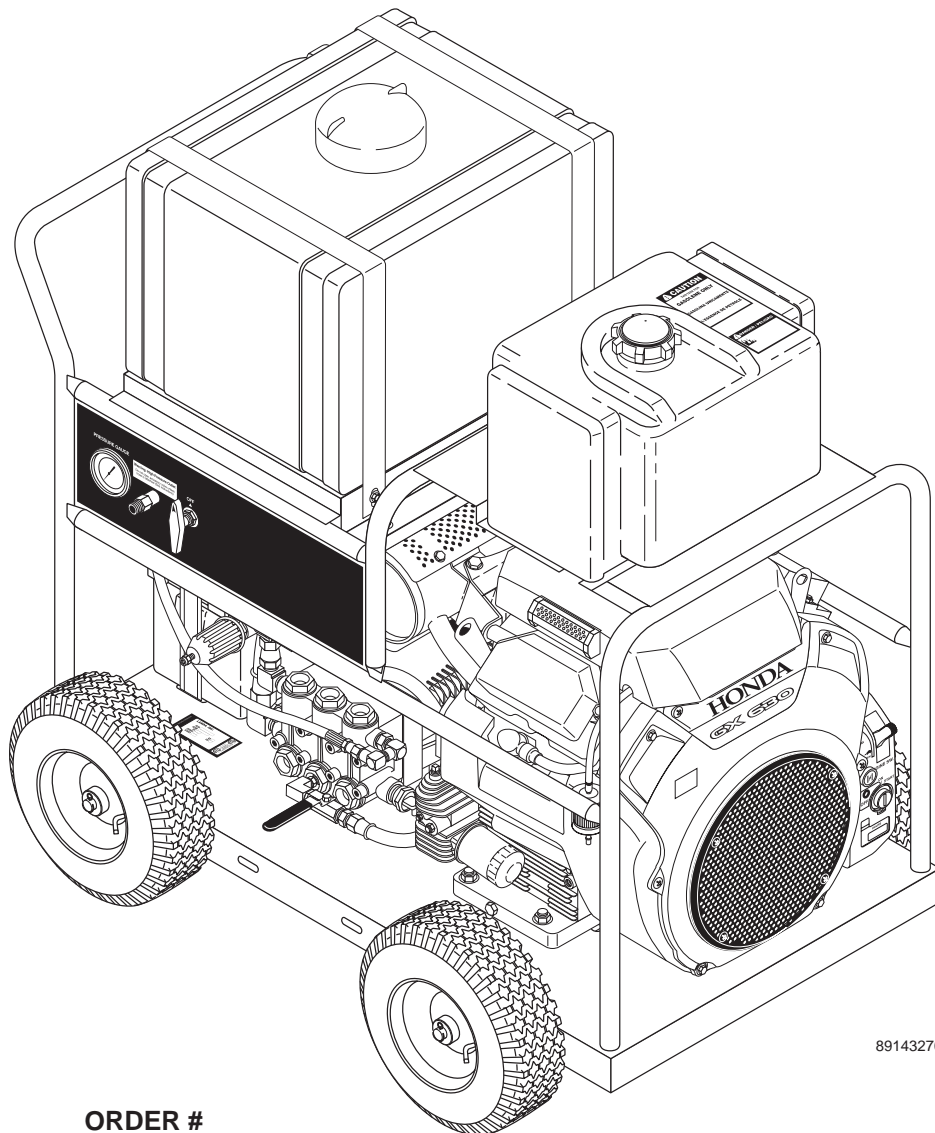




SJGPG-3016 ***SJGDG-3020***

OPERATOR'S MANUAL



89143270-3

| MODEL # | ORDER # |
|------------|-------------|
| SJGPG-3016 | 1.107-060.0 |
| SJGDG-3020 | 1.107-061.0 |

To locate your local Shark Commercial Pressure Washer Dealer nearest you,
visit www.sharkpw.com

8.914-327.0

CONTENTS

| | |
|---|--------|
| Introduction | 3 |
| Machine Safety | 3-4 |
| Assembly | 4 |
| Pre-Operation Check | 5 |
| Setup Procedures | 4, 8-9 |
| Component Identification & Use, Drain Cleaning | 5-7 |
| Pre-Operation CheckList | 9 |
| Operating Instructions..... | 9-11 |
| Maintenance | 11-12 |
| Exploded View, SJGPG-3016 | 13 |
| Exploded View, Parts List SJGPG-3016 | 14-15 |
| Exploded View, SJGDG-3020 | 16-17 |
| Exploded View Parts List SJGDG-3020..... | 18-19 |
| Foot Brake Assembly & Parts List | 20 |
| SHR-200CP Hose Reel, Exploded View & Parts List | 21 |
| SHR-300 Hose Reel, Exploded View & Parts List | 22 |
| Hose and Spray Gun Assembly & Parts List | 23 |
| Pump, TS-2021 Exploded View | 24 |
| Pump, TS-2021 Parts List & Specifications | 25 |
| Pump GX8030R Exploded View | 26 |
| Pump GX8030R Exploded View Parts List | 27 |
| Injector Screw Coupler & Parts List | 28 |
| Troubleshooting | 29-30 |
| Warranty | 31 |

Model Number _____

Serial Number _____

Date of Purchase _____

The model and serial numbers will be found on a decal attached to the machine. You should record both serial number and date of purchase and keep in a safe place for future reference.

INTRODUCTION

Thank you for purchasing a Shark® Jetter.

This manual covers the operation and maintenance of models SJGPG-3016 and SJGDG-3020. All information in this manual is based on the latest product information available at time of printing.

Shark reserves the right to make changes at any time without incurring any obligation.

Owner/User Responsibility:

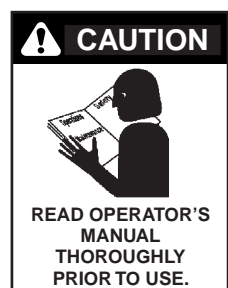
The owner and/or user must have an understanding of the manufacturer's operating instructions and warnings before using this Shark® Jetter. Warning information should be emphasized and understood. If the operator is not fluent in English, the manufacturer's instructions and warnings shall be read to and discussed with the operator in the operator's native language by the purchaser/owner, making sure that the operator comprehends its contents.

Owner and/or user must study and maintain for future reference the manufacturers' instructions.

This manual should be considered a permanent part of the machine and should remain with it if machine is resold.

When ordering parts, please specify model and serial number.

MACHINE SAFETY



CAUTION: To reduce the risk of injury, read operating instructions carefully before using.

1. Read the owner's manual thoroughly. Failure to follow instructions could cause malfunction of the machine and result in death, serious bodily injury and/or property damage.

2. All installations must comply with local codes. Contact your electrician, plumber, utility company or the selling distributor for specific details.



CAUTION: Risk of asphyxiation. Use this product only in a well ventilated area.

3. Avoid installing machines in small areas or near exhaust fans. Exhaust contains poisonous carbon monoxide gas; exposure may cause loss of consciousness and may lead to

death. It also contains chemicals known, in certain quantities to cause cancer, birth defects or other reproductive harm.



WARNING: Flammable liquids can create fumes which can ignite causing property damage or severe injury.

WARNING: Risk of fire. Do not add fuel when the product is operating.

WARNING: Risk of explosion — do not spray flammable liquids.

4. Do not place machine near flammable objects as the engine is hot.
5. Allow engine to cool for 2 minutes before refueling. If any fuel is spilled, make sure the area is dry before testing the spark plug or starting the engine. (Fire and/or explosion may occur if this is not done.) Gasoline engines on mobile or portable equipment shall be refueled:
 - (a) outdoors;
 - (b) with the engine on the equipment stopped;
 - (c) with no source of ignition within 10 feet of the dispensing point; and
 - (d) with an allowance made for expansion of the fuel should the equipment be exposed to a higher ambient temperature.

In an overfilling situation, additional precautions are necessary to ensure that the situation is handled in a safe manner.



CAUTION: High pressure stream of water that this equipment can produce can pierce skin and its underlying tissues, leading to serious injury and possible amputation.



CAUTION: Do not touch engine during operation. The muffler and other parts of the engine get hot and can cause severe burns.



WARNING: High pressure spray can cause particles to become airborne and fly at high speeds.

6. Eye safety devices, rubber gloves, ear plugs and foot protection must be worn when using this equipment.
7. High pressure developed by these machines will cause personal injury or equipment damage. Use caution when operating. Do not direct discharge stream at people or severe injury or death will result.
8. Never make adjustments on machine while it is in operation.
9. Do not operate valve in the off position for extensive periods of time as this may cause damage to the pump.
10. The best insurance against an accident is precaution and knowledge of the machine.
11. Shark will not be liable for any changes made to our standard machines, or any components not purchased from Shark.
12. Read engine safety instructions provided.



WARNING: Keep water spray away from electric wiring or fatal electric shock may result.

13. Never run pump dry.
14. Do not allow children to operate the Shark Jetters® at any time.
15. Inlet water supply must be cold and clean fresh water.

ASSEMBLY

Upon arrival, inspect the shipping crate for damages. Uncrate and examine all parts. Note any damage to machine or components for claims against freight carrier.

The tires on the jets may be partially deflated for packing and shipment. Reinflate tires to the pressure specified on the side of the tire before using the machine.

Jets have antifreeze in the pump to protect it from freezing conditions during shipment and storage. If machine will be stored and operated in a cold climate, follow Freeze Protection instructions on page 11.

PRE-OPERATION CHECK

- ☐ Pump oil (SAE 30W non-detergent oil)
- ☐ Gear reduction (90W gear lube)
- ☐ Cold clean fresh water supply (6 GPM • 3/4" (15.875 mm) • 20 PSI)
- ☐ Hose, nozzle
- ☐ Fuel (unleaded 86 or higher octane)
- ☐ Engine oil (SAE 10W40)

SETUP PROCEDURES

These machines are meant to be used at or near the working area and under operator supervision. If machine must be located out of sight of the operator, special controls may be required for proper machine operation and operator safety.

Locate the equipment on a solid level area with slopes for drainage. Avoid areas where water can be sprayed at machine.

Before using the jetter, make sure there are no impurities in the incoming water supply. Turn the water source on for at least 15 seconds, to remove any possible debris in the water before connecting hose to water inlet swivel.

The inlet screen located inside the filter should be cleaned before each use. To clean the inlet screen, unscrew cap beneath the filter, remove the screen and rinse thoroughly with water. Then replace screen.

Connect one end of a garden hose (not included) to the water faucet — water supply not to exceed 100 PSI (6.9 bar) and the other end to the water inlet of the jet machine. (See component identification drawings on next pages.) Use heavy duty 3/4" hose of no more than 50 ft. (15 m) in length. If run without an adequate water supply, the pump will cavitate. Cavitation causes the pump to vibrate, causing damage to the pump. **NOTE:** Lack of water supply can lead to seal damage, causing a loss of pressure and will void the warranty to the pump.

Maximum temperature from the water source should not exceed 140°F (60°C). Using water hotter than 140°F (60°C) can cause damage to the pump and void the warranty. If jet is being used to clear ice blockages, see instructions on page 10.

Remove oil plug on top of pump and replace with dipstick supplied. Fill engine with oil. Refer to engine manual for quantity.

Hose Selection Guide

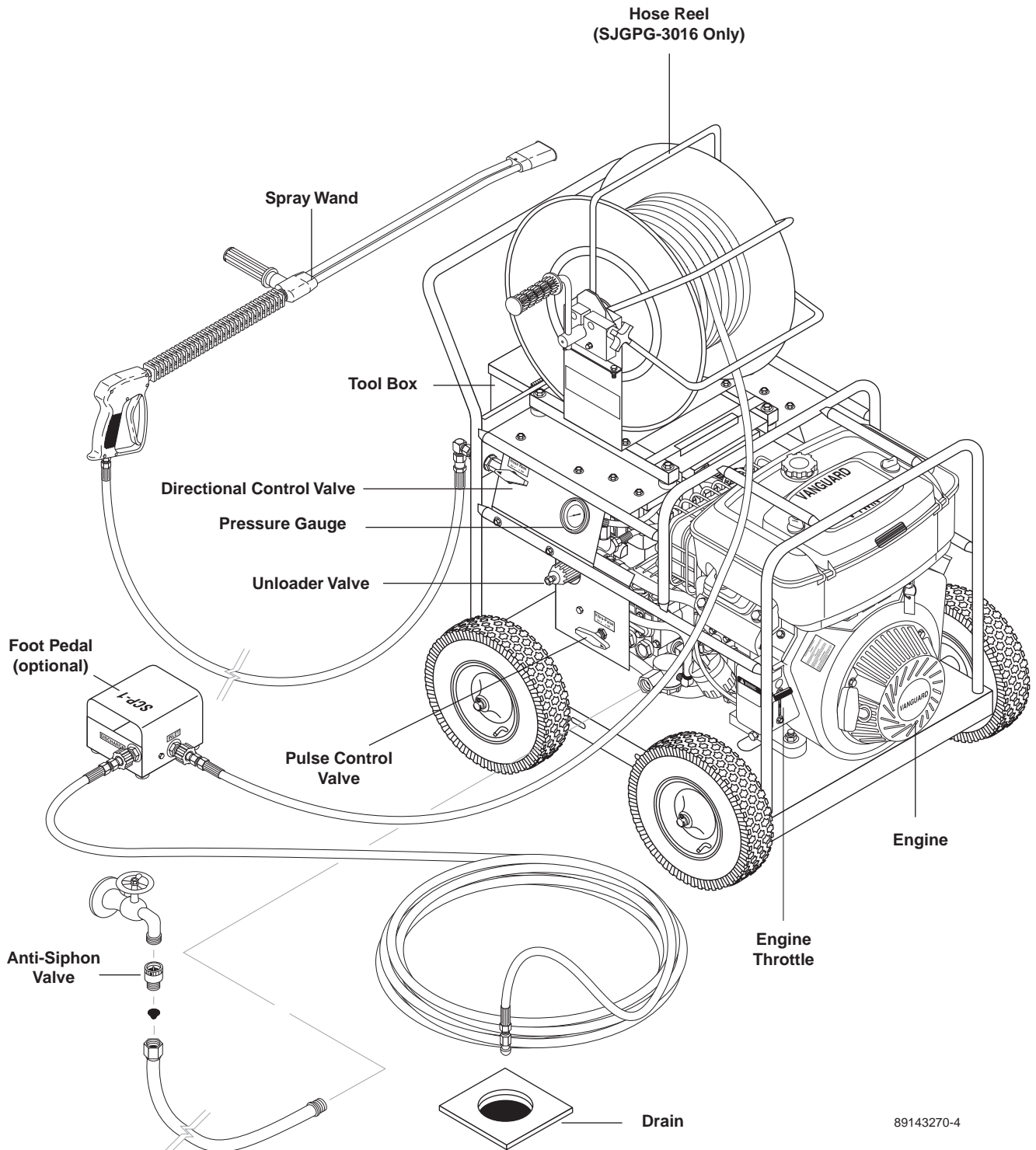
Select the proper hose diameter for the line to be cleaned. When using new hose, run water through it to clean it out before attaching the nozzle.

| Hose Size (ID)* | Pipe Size | Typical Applications |
|--|----------------------------------|---|
| 3/8" or 5/16" (9.925 mm or 7.938 mm) | 4" to 8" (102 mm to 203 mm) | Floor drains, septic lines, long runs |
| 1/4" (6.35 mm) | 2" to 4" (51 mm to 102 mm) | Kitchen sinks, laundry drains, clean outs |
| 1/8" (3.175 mm) | 1-1/2" to 2" (38 mm to 51 mm) | Small lines, bathroom sinks, tight bends |

* Inside Diameter

COMPONENT IDENTIFICATION AND USE

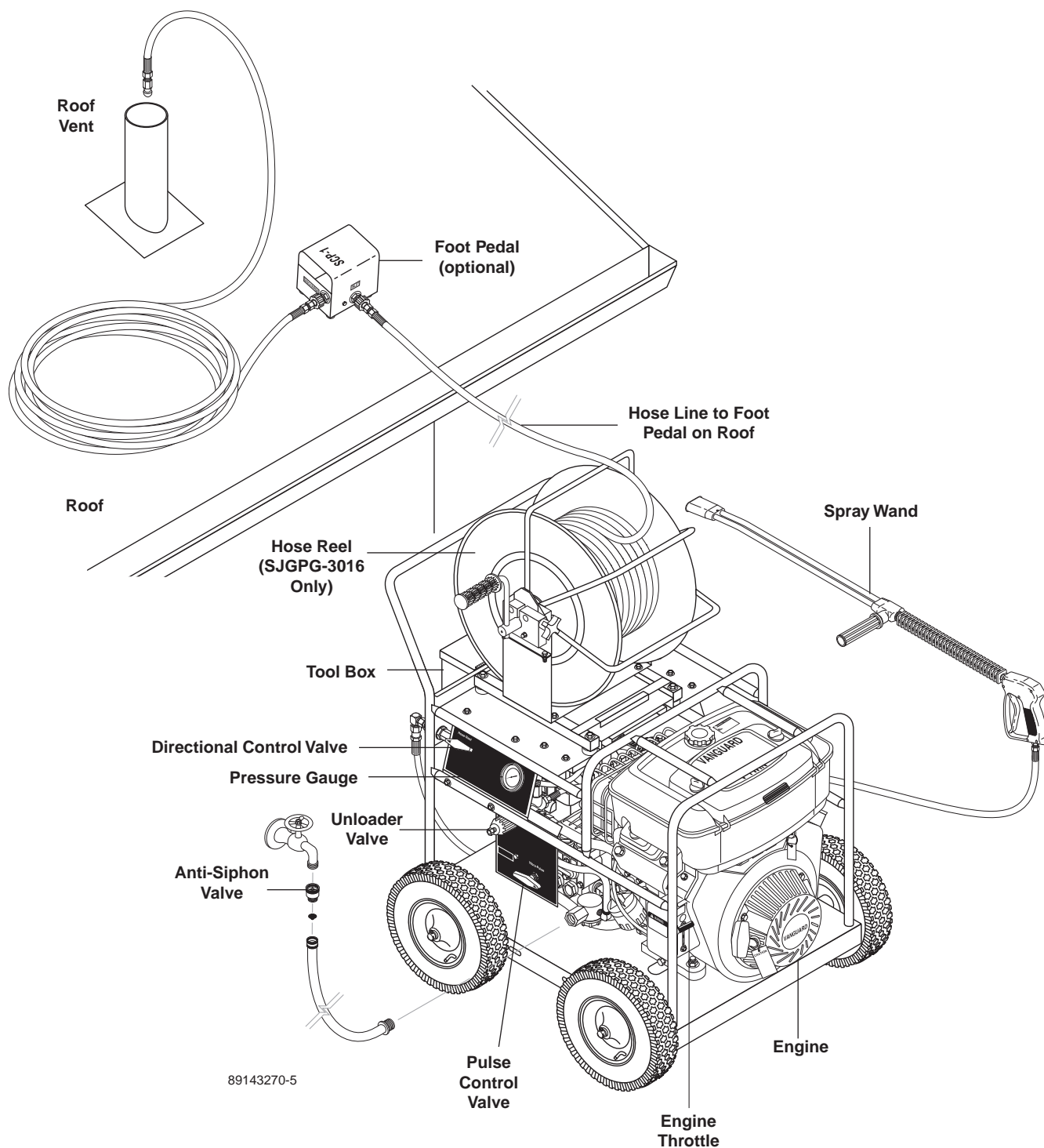
DRAIN CLEANING



89143270-4

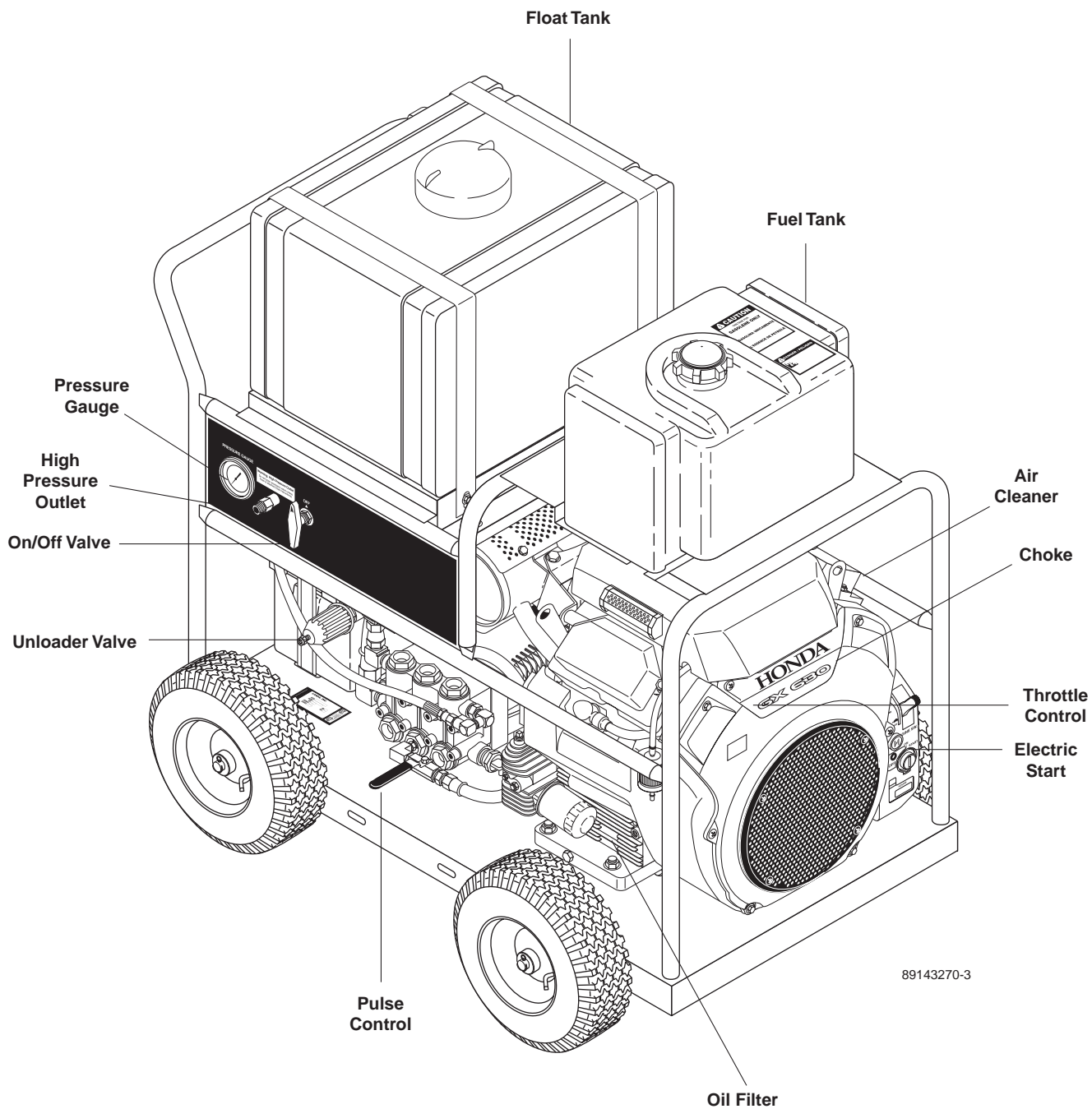
COMPONENT IDENTIFICATION AND USE

DRAIN CLEANING THROUGH ROOF VENT



COMPONENT IDENTIFICATION

SJGDG-3020



When selecting hose size, consider that pressure is lost as the water travels down the length of the hose. As the length increases, the pressure decreases. In addition, the smaller the diameter of the hose, the greater the loss of pressure per foot will be. As an example, at 2 GPM (.13L/sec) a 1/4" (6.350 mm) hose will lose 180 lbs. (12.4 bar) of pressure over 100 ft. (30.5 m) of hose, yet a 3/8" (9.925 mm) hose will only lose 25 lbs. (1.7 bar) of pressure over the same length and at the same flow rate. At 4 GPM, a 3/8" hose will lose 90 lbs. (6.2 bar) of pressure over a 100 ft. (30.5 m) length. The gauge reflects pressure from the pump only, not pressure at the end of the hose. It is important to select the largest possible hose size in order to have as much pressure as possible at the end of the hose.

Hoses of the same diameter may be coupled together using a screw coupling but it is not recommended for lines smaller than 8" (203 mm) in diameter. The long length of the hose connectors and coupling can get caught in the bends of the line.

| PART NUMBER | ADAPTER SIZE (FPT) |
|-------------|--------------------|
| 8.705-364.0 | 1/4" x 1/4" |
| 8.705-366.0 | 3/8" x 3/8" |
| 8.705-369.0 | 1/2" x 1/2" |
| 8.705-371.0 | 3/4" x 3/4" |

Coupling two different size hoses can be done through the spray wand trigger or foot pedal.

It is not advisable to have two different hose sizes coupled in a drain line. There is a tremendous loss of pressure when combined, aside from the difficulty of getting around bends.

The 3/8" (9.925 mm) and 1/4" (6.350 mm) hoses may be attached to the fitting in the core of the hose reel using the swivel at one end of the hose. The 3/8" hose may also be attached directly to the accessory outlet by using a twist connect. The 1/4" and 1/8" (3.175 mm) hoses may be connected directly to the accessory outlet if an adapter fitting is used between the hose and quick connect. Adapters may be ordered separately.

Often, the 1/8" hose is used in conjunction with the spray wand trigger to give the operator finger tip control. Remove the spray wand from the trigger and attach the 1/8" hose using bushing part number 9.803-564.0.

The SCP-1 foot valve is available that can be used as a safety shut-off valve for all hose sizes. See foot pedal section for installation and operating instructions.

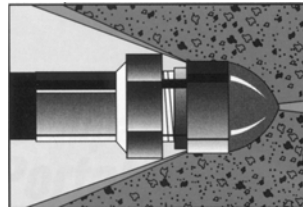
Nozzles

A number of types of nozzles are available for drain cleaning. Each has a different spray pattern. Some nozzles may have a hole in the front to cut through the stoppage. All will have holes in the back to drive the hose down the line and clean the walls of the pipe. A combination of nozzles may be required to clear a line. Always turn off the machine and shut off valve before changing nozzles.

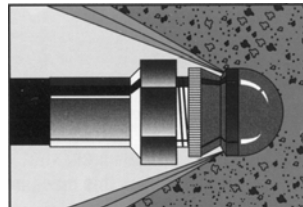
Make sure the nozzle you are using matches the pump size. A 3000 PSI (207 bar) pump requires a different nozzle orifice than a 1500 PSI (104 bar) pump. Mismatching nozzles with pump size will either cause too little pressure which may not clear the drain, or too much pressure which may damage the machine.

Check nozzles before and after each use for clogged holes which can cause pressure to increase to dangerously high levels and damage the pump. A clogged hole can be cleared by simply using a nozzle cleaning tool.

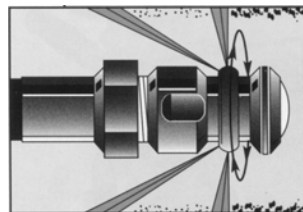
Use the nozzle selection guide to determine what nozzle you will need for various applications.



Powerful penetrating nozzle cuts through grease and ice.



Wide spray flushing nozzle cleans inside of pipe thoroughly.



**(Optional)
Rotary nozzle scours walls of pipe crystal clear.**

NOZZLE SELECTION GUIDE

| SJGPG-3016 | 1/8" | 1/4" | 3/8" |
|-----------------|-------------|-------------|-------------|
| No Forward Jet | 8.751-954.0 | 8.751-952.0 | 8.751-956.0 |
| 1 Fwd / 3 Back | 8.751-955.0 | 8.751-953.0 | 8.751-957.0 |
| 1 Fwd / 4 Back | - | 8.710-877.0 | - |
| 1 Fwd / 8 Back | - | - | 8.751-958.0 |
| Rotating Nozzle | 8.710-899.0 | 8.710-898.0 | - |

| SJGPG-3020 | 1/8" | 1/4" | 3/8" |
|-----------------|------|-------------|-------------|
| 1 Fwd / 3 Back | - | 8.710-879.0 | 8.710-886.0 |
| Rotating Nozzle | - | 8.710-900.0 | - |

Rotary Nozzles

Rotary nozzles are useful as a finishing tool. After the line has been cleared, you may switch to the rotary nozzle to more thoroughly clean the walls of the pipe. Use these nozzles only in a predominantly straight run since they are longer than regular nozzles and may get caught in tight bends.

Rotary nozzles can be adapted using the nozzle adapters and bushings below:

NOZZLE ADAPTERS AND BUSHINGS

| Part Number | FPT x MPT |
|-------------|-------------|
| 9.803-054.0 | 1/4" x 1/8" |
| 8.705-185.0 | 3/8" x 1/8" |
| 9.804-007.0 | 3/8" x 1/4" |
| 9.803-564.0 | 1/8" x 1/4" |
| 8.705-129.0 | 1/4" x 3/8" |

PRE-OPERATION CHECKLIST

- ☐ Be sure you understand all safety precautions and have been trained to use the machine.
- ☐ Wear goggles or a face shield to protect your eyes from spray and from any product of the spray.
- ☐ Wear gloves, rubber boots and other protective clothing as required.
- ☐ Be sure you understand all safety precautions for the detergent use.
- ☐ Check the labels of any substance you will spray. If the label recommends any antidote or treatment, be ready to use it.

- ☐ Check that all lines and hoses are clear.
- ☐ Check that the machine is connected to an adequate water supply and that the water supply is on.
- ☐ Check that traffic has not made the hose weak, worn or damaged. Check hose for pinching or kinking.
- ☐ Replace any damaged hose.
- ☐ Tighten all fluid connections securely.
- ☐ Check gasoline and oil level of engine. See enclosed manufacturer's manual for engine and oil types.

OPERATING INSTRUCTIONS

1. Read engine warning and operating instructions. Failure to follow instructions can cause serious injury and damage to equipment. Be familiar with all pre-operation checklists.
2. Check all hoses for wear and damage. Tighten all connections securely.
3. Check oil level of pump.
4. Check engine fuel and oil levels.
5. To begin, turn the water faucet on fully and purge air from system.
6. Insert end of the jet hose 2 to 3 feet into the drain line. Then turn the valve on.

Warning: *Never point the end of the jet hose at a person while operating.*

Gas Engine Start-Up

1. Make sure that the ball valve is turned on and water is flowing.
 2. Turn fuel valve to the open position.
 3. Move choke lever to the closed position.
- NOTE:** Do not use choke if engine is warm or ambient air temperature is high.
4. Move throttle lever to the midpoint position.
 5. Turn the engine switch to the ON position.
 6. Pull the starter grip lightly until resistance is felt, then pull briskly.
 7. As the engine warms up, gradually move the choke lever to the open position.
 8. Position the throttle to the desired engine speed.

NOTE: The directional control valve directs high pressure water to either the hose reel or hose, wand and spray gun.

Pulse Technology

Pulsation makes the hose vibrate, helping the jet go longer distances and around tight bends easier.

The pulse control valve is located on the front of the pump. Simply turn the valve on to engage the pulse.

Pulsation causes a pressure drop when it's engaged. The pulse is most effective in a 1/8" hose. You'll note less vibration with a 1/4" hose and almost none with a 3/8" hose. However the pulse is still effective, causing the water to burst from the nozzle hundreds of times per second.

If you are still having difficulty getting a hose around a tight bend, switch to a smaller diameter hose.

Turn the pulse off before turning machine off.

Shut-Down Instructions

After drain cleaning or spray washing is completed, run clear water through the system. Always leave ball valve in open position when turning off engine. Reduce engine to idle, turn off engine and then be sure to turn off fuel valve. Turn off water supply and drain as much water from pump as possible. Remove water supply hose from inlet. If you are in a cold climate, see Freeze Protection on page 12.

SHR-200 and SHR-300 Hose Reels

Use the SHR-200 or SHR-300 hose reels when clearing inside drain lines with the gas jet in order to use the high pressure jet without the danger of fumes in the building. Position the reel at the drain site. Connect the hose from the jet machine to the inlet on the reel. Select and attach a nozzle to the hose on the reel. Put the hose 2 to 3 ft. into the drain line. Open the ball valve on the reel. Follow the start up procedures.

SCP-1 Foot Pedal (Optional)

The foot pedal is used with any jetter manufactured by Shark® (see pages 5-6). It interrupts the flow of water between the pump and the nozzle while leaving both hands free to guide the hose. The pump will continue to run in bypass mode. Do not leave pump in bypass for more than a few minutes or the pump can be damaged. (See Regulating Pressure Unloader).

The foot pedal may be hooked up either at the machine or remotely at the drain site. To use the foot pedal at the machine, remove the hose going to the swivel on the hose reel and attach it to the inlet side of the foot pedal. Then, connect the accessory hose, (8.918-201.0) between the outlet of the pedal and the swivel on the hose reel. Some jetter models may need the added length of the accessory hose on the inlet side of the pedal.

For remote hookup, pull the hose from the hose reel to the drain site. Attach the hose to the inlet of the pedal. The pedal is designed for 3/8" hose fittings. If using a 1/4" hose, use bushing 8.705-129.0 as well. Then attach the smaller hose (1/8" or 1/4") to the outlet side of the pedal. Use the smaller hose to clear the drain line.

Ice Blockages

High pressure water can be used to clear an ice blockage. A 3000 PSI (207 bar) gas jet can clear a 4" (102 mm) line at an approximate rate of one foot per minute. The smaller electric jet will take twice as long. Ambient air temperature will effect these times. Use a nozzle with a forward jet. DO NOT allow the incoming water supply to exceed 140°F (60°C) or it could cause damage to the pump. Remember to follow the cold weather precautions found in the freeze protection section.

Spray Wand

Follow the same procedures listed previously for safety, setup, operation and maintenance. To operate the spray wand, connect the high pressure hose and trigger to the machine. Turn on the water supply, then squeeze the trigger to purge air from the system. Continue to squeeze trigger as you start the machine.

Use caution when pressure washing. Wear goggles and rubber gloves and boots. Analyze angle of spray and anticipate angle of back splash. Do not point spray at anyone including yourself. Do not put your hand in front of water spray. It can penetrate the skin and cause a need for amputation. It is best to start at a 45° angle at a 7 to 10 ft. (2 to 3 m) distance from object to be cleaned. Direct spray at close range can be powerful enough to cause damage.

NOTE: Typical industry standard stipulates you hold the high pressure spray nozzle approximately 6-8" from the surface to be cleaned. When cleaning with a detergent, apply from bottom up with an even left to right movement. Rinse from top down with a similar motion. This will help reduce potential streaking. Always apply soap to a dry surface. This will enhance penetration and detergent cling and reduce dilution of detergent with an already wet surface.

If you have the dual-lance wand you may draw detergents through the spray wand in conjunction with the detergent injector mounted on the machine. First set up the detergent injector system (see Detergent Injector).

Then simply turn the knob on the wand counterclockwise so that water is flowing through the wide spray nozzle. To spray water only, turn the knob to the clockwise position so that the water flows through the narrow spray nozzle.

The spray wand option with the other jets may also be used to spray detergent. To do so, simply turn the nozzle on the end of the wand counterclockwise. As the spray widens, more of the detergent will be drawn through the wand. Turn the nozzle clockwise to reduce the detergent flow and narrow the water spray pattern and return to high pressure.

Detergent Injector

The detergent injector can be attached to the free end of the ball valve. Do not attach detergent injector to the inlet side of the pump. Detergents can damage pump.

To use the detergent injector, attach one end of siphon hose to the injector and put the filter end in the detergent solution. Be sure the end of the hose is at the bottom of the container or bucket. Some models have adjustable valves to control the amount of detergent drawn through the hose.

Remember: Do not use corrosive material. See warning previously listed.

Regulating Pressure Unloader

The machine is equipped with a regulating pressure unloader to prevent pressure overload in the event that the nozzle is plugged or the ball valve or trigger is shut off. When the machine is in the bypass mode, the pump will continue to run. However running in bypass mode for extended periods will cause damage to the pump; no more than 5 minutes with the SJGPG-3016 or SJGDG-3020 pumps. Excessive temperatures will damage the pump and void the warranty.

The machine also comes with thermal overload protection. When water temperature in pump increases to 140°F (60°C), the thermal relief valve will release hot water and allow cool water to enter pump from fresh water supply.

To adjust unloader, loosen lock nut and turn the knob clockwise to increase pressure and counterclockwise to decrease pressure.

Caution: Do not overtighten unloader. Tighten lock nut after adjustments are made.

FREEZE PROTECTION

To protect your machine from severe damage caused by water freezing inside the components, it is important to winterize whenever it is subjected to freezing tempera-

tures. The best way to protect the system is to keep it out of the cold. If the machine is stored outside in freezing temperatures the following procedures must be followed to prevent damage to the machine

Model SJGPG-3016 - Flush the system with antifreeze. To do so, simply attach a short garden hose (not to exceed 4 feet) to the inlet of the pump and place the other end into a container of 50/50 mixture of water and antifreeze. Remove the jetter nozzle from the jetter hose. Turn the machine on to draw antifreeze into the system. When antifreeze flows out the end of the hose, turn the machine off.

Model SJGDG-3020 - Flush the system with antifreeze. To do so, simply add two gallons of a 50/50 mixture of water and anti-freeze solution to the water tank. Remove the jetter nozzle from the jetter hose and place end of jetter hose into water tank. Start engine allowing anti-freeze to flow through the pump and hose back into the water tank. Turn the engine off and drain water from inlet water filter and hose connecting filter to water tank.

When preparing to operate equipment the next time capture the anti-freeze in the water tank by placing jetter hose with nozzle removed into a customer provided container and start engine. Upon anti-freeze being depleted in water tank turn engine off. Antifreeze, if kept relatively undiluted can be used again and again. Hoses can also be protected from freezing by using compressed air to clear them of residual water.

MAINTENANCE

Regular inspection is the key to preventing breakdowns and prolonging the life of the equipment. Follow this simple procedure religiously.

DAILY

- ☐ Check that the water supply is adequate.
- ☐ Check that the nozzle on the spray wand is not clogged or worn out.
- ☐ Check that the PUMP OIL LEVEL is within operating range on dipstick or sight glass.
- ☐ Check that the engine FUEL LEVEL is full.
- ☐ Check that the ENGINE OIL LEVEL is within operating range on dipstick.
- ☐ Check the INLET FILTER.

WEEKLY

- ☐ Check the PRESSURE HOSE for wear and damage.
- ☐ Damaged hose can be repaired at a local service dealer or by your equipment dealer.

- ☐ Check the FUEL FILTER for dirt and sediment.
- ☐ Check the AIR FILTER for dirt. Clean and replace as required.

Maintenance Schedule

Use the following maintenance schedule at the stated intervals or when your routine turns up a problem.

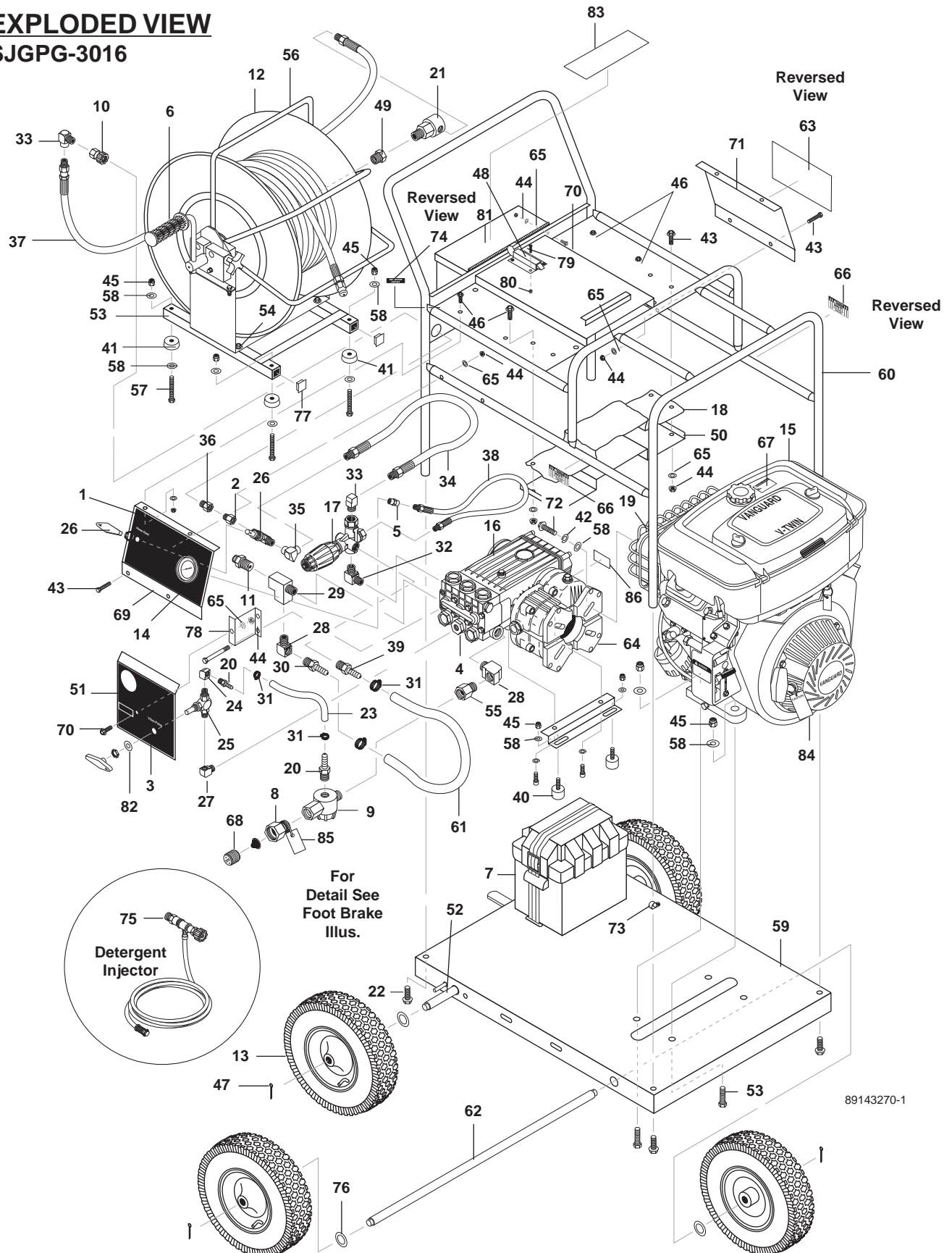
Shut off gas engine before attempting any repairs or maintenance.

| ITEMS TO BE SERVICED | MONTHS OR HOURS OR SERVICE | | | | |
|----------------------------|----------------------------|-----------------------------|-------------------------------|--------------------------------|----------------------------|
| | 1st Month or 20 Hours | 1st 3 Months or 50 Hours | Every 3 Months or 50 Hours | Every 6 Months or 100 Hours | Every Year or 500 Hours |
| Pump Crankcase Oil Change* | | X | | | X |
| Engine Oil Change | X | | | X | |
| Air Filter Cleaning | | X | X | | |
| Fuel Filter Change | | | | X | |
| Spark Plug Change | | | | X | |

* Use SAE 30w non-detergent motor oil to full mark on dipstick or to dot on sight glass.

** Refer to engine manufacturer's specifications for correct oil viscosity when adding to engine oil.

EXPLODED VIEW SJGPG-3016



EXPLODED VIEW PARTS LIST
SJGPG-3016

| ITEM | PART NO. | DESCRIPTION | QTY |
|------|-------------|--|-----|
| 1 | 8.900-863.0 | Label, Control Panel | 1 |
| 2 | 8.706-993.0 | Adapter, 3/8" x 3/8" | 1 |
| 3 | 8.940-286.0 | Label, Pressure Control | 1 |
| 4 | 8.704-712.0 | Cap, Valve w/1/4" Gauge Port | 1 |
| 5 | 8.706-134.0 | Coupling, 1/4" Pipe | 1 |
| 6 | 9.802-069.0 | Grip, 1" Handle (Waffle) | 1 |
| 7 | 9.802-090.0 | Battery Box, MPG | 1 |
| | 9.802-705.0 | ▲ Bolt, Carriage, 1/4" x 1" | 1 |
| | 9.802-775.0 | ▲ Nut, 1/4" Whiz Loc | 1 |
| | 9.802-091.0 | ▲ Battery Box Plate | 1 |
| 8 | 9.802-146.0 | Swivel, 1/2" MP x 3/4" GHF w/Strainer | 1 |
| | 9.802-179.0 | ▲ Anti-Siphon Valve | 1 |
| 9 | 9.802-163.0 | Strainer, 1/2" Inline | 1 |
| 10 | 8.707-182.0 | Coupler, 3/8" Female | 1 |
| 11 | 8.707-256.0 | Pump Protector, 1/2" 140° | 1 |
| 12 | 8.711-865.0 | Hose Reel, 18", General Wire | 1 |
| 13 | 8.711-907.0 | Wheel & Tire Assy, 4" Tubeless, White Rim, 5/8" HUB | 4 |
| 14 | 8.712-150.0 | Gauge, 0-6000 PSI | 1 |
| 15 | 8.715-071.0 | Engine, Vanguard 16 HP ES w/Fuel Tank & Throttle, 20 Amp | 1 |
| | 8.718-026.0 | ▲ Kit, Man. Throttle Speed Ctrl | 1 |
| | 9.802-673.0 | ▲ Key, Shaft, 16 HP Vanguard | 1 |
| | 8.716-481.0 | ▲ Cable, Battery, 29" Blk, 4 Ga | 1 |
| | 9.802-503.0 | ▲ Cable, Battery, 32" Red, 4 Ga | 1 |
| | 9.802-741.0 | ▲ Bolt, 8mm x 16mm Hex Head | 1 |
| | 8.718-980.0 | ▲ Washer, 5/16" Flat SAE | 1 |
| | 9.802-813.0 | ▲ Washer, 5/16" Lock Split Ring | 1 |
| 16 | 8.715-337.0 | Pump, Interpump TS-2021 | 1 |
| 17 | 8.750-298.0 | Unloader, VRT 3, 8 GPM @ 3630 PSI | 1 |
| 18 | 8.717-427.0 | Insulation Blanket, w/Foil 1.25 SF | |
| 19 | 9.803-631.0 | Muffler, Exhaust, Briggs 16 HP | 1 |
| | 8.718-038.0 | Guard, Muffler | 1 |
| | 9.802-830.0 | ▲ Screw, Hex 1/4"-20 x 1/2", TF, TCS, ZN | 4 |
| 20 | 8.706-950.0 | Hose Barb, 3/8" Barb x 1/4" ML Pipe | 2 |
| 21 | 8.711-875.0 | Swivel 1/2 x 3/8 | 1 |
| 22 | 9.802-768.0 | Screw, 3/8" x 1-1/4", Whiz Loc | 4 |
| 23 | 8.711-785.0 | Hose, 3/8" Push-On | 5" |
| 24 | 8.706-818.0 | Elbow, 1/4" Female, Brass | 1 |
| 25 | 8.707-219.0 | Valve, 1/4" Ball, 2 Way, Brass | 1 |

| ITEM | PART NO. | DESCRIPTION | QTY |
|------|-------------|---|-----|
| 26 | 8.707-218.0 | Valve, 3/8" Ball, 2-Way, Brass | 1 |
| 27 | 8.706-200.0 | Elbow, 1/4" Street | 1 |
| 28 | 8.706-829.0 | Elbow, 1/2" Street, Brass | 2 |
| 29 | 8.706-860.0 | Tee, 1/2" Street | 1 |
| 30 | 8.706-947.0 | Hose Barb, 1/2" Barb x 1/2" MNPT, Brass | 1 |
| 31 | 9.802-201.0 | Clamp, Screw | 4 |
| 32 | 8.706-168.0 | Elbow, 3/8" Male, Pipe | 1 |
| 33 | 8.706-207.0 | Elbow, 3/8" Street | 2 |
| 34 | 8.918-194.0 | Hose, 3/8" x 22.5", 1 Wire, 3/8" MPT X 3/8" X 3/8" MPTS | 1 |
| 35 | 8.706-167.0 | 3/8" x 3/8" Female, Elbow | 1 |
| 36 | 8.707-184.0 | Plug, 3/8" Screw-Type Coupler 7642 | 1 |
| 37 | 8.918-201.0 | Hose, 3/8" x 34.5", 1 Wire, 3/8" MPT x 3/8" MPTS | 1 |
| 38 | 8.918-178.0 | Hose, 1/4" x 20.5", 1 Wire, 1/4" MPT x 3/8" MPTS | 1 |
| 39 | 8.706-337.0 | Hose Barb, 1/2" Barb x 3/8" MNPT Steel | 1 |
| 40 | 8.706-519.0 | Bumper, Rubber 1" w/Bolt, 5/16" x 1/2" 60 DUR | 2 |
| 41 | 8.706-510.0 | Bumper, Rubber, 3/4" w/Washer | 4 |
| 42 | 9.802-813.0 | Washer, 5/16" Lock, Split Ring | 4 |
| 43 | 8.718-766.0 | Bolt, 1/4" x 1-1/2" | 8 |
| 44 | 9.802-773.0 | Nut, 1/4" Flange, Zn | 11 |
| 45 | 9.802-776.0 | Nut, ESNA, 5/16" | 10 |
| 46 | 9.802-753.0 | Screw, 1/4" x 3/4" HH, NC Whiz Loc | 4 |
| | 9.802-773.0 | ▲ Nut, 1/4" Flange ZN | 4 |
| | 9.802-802.0 | ▲ Washer, 1/4" Flat SAE | 4 |
| 47 | 8.719-058.0 | Pin, 1/8" x 1-1/4" Cotter | 4 |
| 48 | 8.719-075.0 | Latch Finger | 1 |
| 49 | 8.706-294.0 | Bushing, 1/2" x 3/8" Steel | 1 |
| 50 | 8.911-684.0 | Shield, Muffler, SJGPG-3016 | 1 |
| 51 | 8.911-685.0 | Bracket, Pulse Valve SJGPG-3016 | 1 |
| 52 | 8.719-926.0 | Rod, Brake, SJGPG-3016 | 2 |
| 53 | 8.911-681.0 | Rail, Weld Assy, Hose Reel | 1 |
| 54 | 8.718-772.0 | Screw, 5/16" x 1-1/2", Whiz Loc | 4 |
| | 9.802-776.0 | ▲ Nut, 5/16" ESNA | 4 |
| | 8.718-980.0 | ▲ Washer, 5/16" Flat, SAE | 4 |
| 55 | 8.706-984.0 | Adapter 1/2" x 1/2" Pipe | 1 |
| 56 | 8.911-672.0 | Handle, w/Guard | 1 |

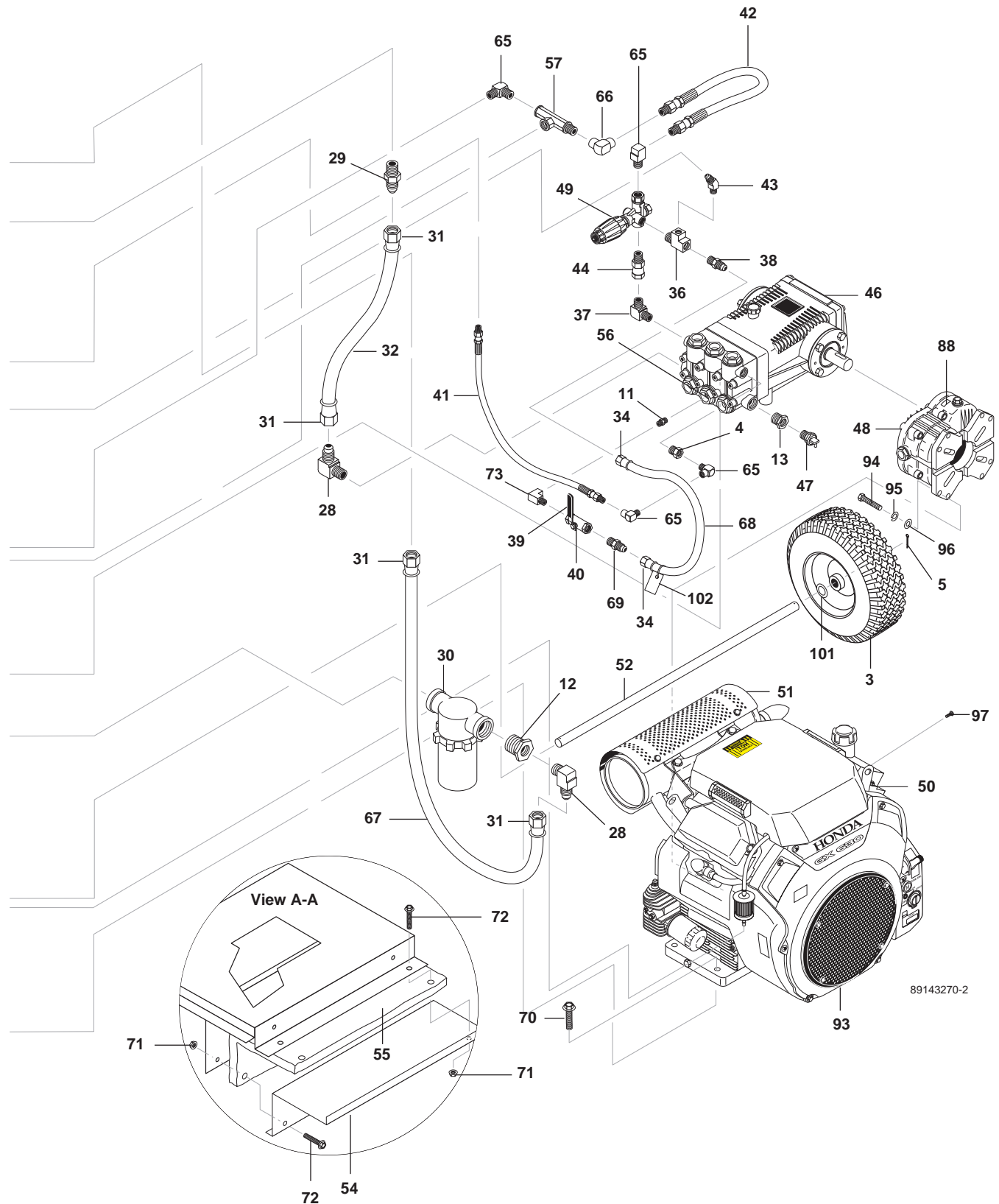
EXPLODED VIEW PARTS LIST (CONT)
SJGPG-3016

| ITEM | PART NO. | DESCRIPTION | QTY | ITEM | PART NO. | DESCRIPTION | QTY |
|------|-------------|--|-------|-------------|-------------|--------------------------------|-----|
| 57 | 9.802-714.0 | Bolt, 5/16" x 1-3/4" | 8 | 83 | 8.900-866.0 | Label, General Gas Warning | 1 |
| 58 | 8.718-980.0 | Washer, 5/16" | 22 | 84 | 8.900-967.0 | Tag, Caution, No Oil in Engine | 1 |
| 59 | 8.911-678.0 | Base, Welded | 1 | 85 | 8.901-120.0 | Tag, Water Temp to Pump | 1 |
| 60 | 8.911-679.0 | Cage, Welded | 1 | 86 | 8.900-376.0 | Label, Use 90W Gear Lube | 1 |
| 61 | 9.802-259.0 | Hose, 1/2" Push-On | 20 in | ▲ Not Shown | | | |
| 62 | 8.911-677.0 | Axle, 5/8" x 28.1" | 1 | | | | |
| 63 | 8.940-285.0 | Label, SJGPG-3016 | 1 | | | | |
| 64 | 8.715-342.0 | Gear Reduction, PA B-18, 1"/24mm | 1 | | | | |
| 65 | 9.802-802.0 | Washer, 1/4" Flat, SAE | 11 | | | | |
| 66 | 9.800-006.0 | Label "Hot/Caliente" w/Arrows Warning | 2 | | | | |
| 67 | 9.800-008.0 | Label, Danger Cool Engine | 1 | | | | |
| 68 | 8.706-742.0 | Plug, Garden Hose Adapter Plastic | 1 | | | | |
| 69 | 8.911-683.0 | Panel, Control SJGPG-3016 | 1 | | | | |
| 70 | 9.802-754.0 | Screw, 1/4" x 1/2" HH NC, Whiz Loc | 3 | | | | |
| 71 | 8.911-682.0 | Panel, Decal, SJGPG-3016 | 1 | | | | |
| 72 | 8.718-630.0 | Bolt, 5/16-24" x 1-1/4", NF, HH | 4 | | | | |
| 73 | 9.802-207.0 | Clamp, Round, 0.56 I.D. | 1 | | | | |
| | 9.803-551.0 | ▲ Screw, 5/16" x 3/4" Whiz | 1 | | | | |
| | 9.802-776.0 | ▲ Nut, 5/16", ESNA, NC | 1 | | | | |
| | 8.718-980.0 | ▲ Washer, 5/16" Flat SAE | 1 | | | | |
| 74 | 8.900-978.0 | Label, Warning, High Pressure Outlet | 1 | | | | |
| 75 | 8.904-458.0 | Chem Injector Assy, Shark® Jetter 3-5 GPM | 1 | | | | |
| 76 | 9.802-810.0 | Washer, 5/8" Flat, SAE | 4 | | | | |
| 77 | 8.706-593.0 | Cap, 1" Square Black Plastic | 4 | | | | |
| 78 | 8.911-676.0 | Bracket, Pump Face Plate | 1 | | | | |
| 79 | 9.804-566.0 | Screw, 10-32" x 1/2" Slot Pan MS ZN | 4 | | | | |
| 80 | 8.718-860.0 | Nut, 10/32" ESNA, SS | 4 | | | | |
| 81 | 8.911-665.0 | Assy, Tool Box, Black | 1 | | | | |
| 82 | 8.750-982.0 | Washer, Brass 3/4" | 1 | | | | |

EXPLODED VIEW



EXPLODED VIEW SJGDG-3020 RIGHT SIDE



EXPLODED VIEW**SJGDG-3020 PARTS LIST**

| ITEM | PART NO. | DESCRIPTION | QTY |
|------|-------------|---|-----|
| 1 | 8.911-686.0 | Base Plate Assy. | 1 |
| 2 | 8.911-687.0 | Frame Assy. | 1 |
| 3 | 8.711-907.0 | Wheel & Tire, 6.5 Steel Rim, 12.5 Tire | 4 |
| 4 | 8.706-294.0 | Bushing, 1/2" x 3/8" Steel | 1 |
| 5 | 8.719-058.0 | Pin, 1/8 x 1, Cotter | 4 |
| 6 | 9.802-768.0 | Screw, 3/8 x 1-1/4" Whiz | 4 |
| 7 | 8.725-395.0 | Nut, 3/8, ESNA, NC | 4 |
| 8 | 8.725-394.0 | Washer, 3/8, SAE, Flat | 4 |
| 9 | 9.802-254.0 | Hose, 1/4, Fuel Line Black | 9" |
| 10 | 8.709-069.0 | Clamp, Hose | 2 |
| 11 | 8.705-973.0 | Nipple, 1/4" Hex Steel | 1 |
| 12 | 8.706-929.0 | Bushing, 1 x 3/4 Barstock | 2 |
| 13 | 8.706-925.0 | Bushing, 3/4 x 1/2 Pipe | 2 |
| 14 | 9.802-146.0 | Swivel, 1/2 MP x 3/4 GHF w/Strainer | 1 |
| | 9.802-179.0 | ▲ Valve, Anti-Siphon | 1 |
| 15 | 8.706-162.0 | Elbow, 1/4, Female Pipe | 1 |
| 16 | 9.802-090.0 | Battery Box, Small | 1 |
| | 9.802-091.0 | ▲ Plate, Battery Box, Small Polypro | 1 |
| 17 | 8.712-150.0 | Gauge, 0-6000 PSI | 1 |
| 18 | 8.707-184.0 | Coupler, 3/8 Female, Screw-Type | 1 |
| 19 | 8.911-665.0 | Assy, Tool Box, Gloss Black | 1 |
| 20 | 8.718-612.0 | Stud, 1/4-20, Brass w/Groove | 1 |
| 21 | 8.749-329.0 | Valve, 3/4" Float | 1 |
| 22 | 8.706-516.0 | Ball, Float, Cylindrical | 1 |
| 23 | 9.802-052.0 | Bulkhead, 3/4 Polypro | 2 |
| 24 | 8.911-689.0 | Strap, Tank | 2 |
| 25 | 8.706-610.0 | Tank, Applicator, 12 Gal. | 1 |
| 26 | 9.802-079.0 | Tank, Encore 5 Gal., Fuel | 1 |
| | 9.802-035.0 | ▲ Plug, 1/8" Square Head, Black | 1 |
| 27 | 9.802-089.0 | Cap, Fuel Tank, Plastic H60-AV1 | |
| 28 | 9.803-557.0 | Elbow, 3/4 SAE x 3/4, 90°, Brass | 3 |
| 29 | 8.706-899.0 | Nipple, 3/4 JIC x 3/4 Pipe | 1 |

| ITEM | PART NO. | DESCRIPTION | QTY |
|------|-------------|--|---------|
| 30 | 8.707-060.0 | Strainer | 1 |
| 31 | 9.802-152.0 | Swivel, 3/4 SAE Fem, Push-on | 4 |
| 32 | 9.802-261.0 | Hose, 3/4, Push-On | 15" |
| 33 | 9.802-259.0 | Hose, 1/2, Pull-on | 20" |
| 34 | 9.802-151.0 | Swivel, 1/2 JIC FEM, Push-On | 4 |
| 35 | 8.706-859.0 | Tee, 3/8 Street | 1 |
| 37 | 9.802-040.0 | Elbow, 1/2 JIC, 1/2, 90° | 1 |
| 38 | 9.802-127.0 | Nipple, 1/2 JIC x 3/8 Pipe | 1 |
| 39 | 8.706-695.0 | Cover, Handle, LG 3000 | 1 |
| 40 | 8.707-198.0 | Valve, 1/4 Shut-Off | 1 |
| 41 | 8.918-177.0 | Hose, 1/4 x 18.25, 1 Wire, 1/4 MPT x 3/8 MPTS | 1 |
| 42 | 8.918-191.0 | Hose, 3/8 x 19, 1 Wire, 3/8 MPT x 3/8 MPTS | 1 |
| 43 | 9.802-133.0 | Elbow, 1/2 JIC x 3/8, 45° | 1 |
| 44 | 9.802-048.0 | Swivel, 1/2 JIC Fem, 3/8 MAL | 1 |
| 45 | 8.706-519.0 | Bumper, Rubber 1 w/Bolt | 2 |
| 46 | 8.904-962.0 | Pump, Legacy, GX8030/R 8@ 3000, 1460 RPM | 1 |
| 47 | 8.707-256.0 | Pump Protector, 1/2 PTP | 1 |
| 48 | 8.715-344.0 | Gear Reduction, PA B-18, 1/25mm | 1 |
| 49 | 8.750-298.0 | Unloader, VRT 3, 8 GPM @ 3630 PSI | 1 |
| 50 | 8.750-495.0 | Engine, Honda, GX630RQ283, 20HP E/S | 1 |
| | 8.716-481.0 | ▲ Cable, Battery, 29" Black, 4 Ga. | 1 |
| | 9.802-503.0 | ▲ Cable, Battery, 32" Red, 4 Ga. | 1 |
| | 9.802-959.0 | ▲ Key, 0.247 SQR x 2.125" | 1 |
| 51 | 8.750-498.0 | Muffler, GX630/GX660, Left | 1 |
| | 8.739-597.0 | ▲ Bolt, Flange M8 x 20 | 2 |
| 52 | 8.911-677.0 | Axle, 5/8 x 28.1 L | 1 |
| 53 | 8.750-982.0 | Washer, Brass 3/4" | 1 |
| 54 | 8.911-688.0 | Shield, Heat | 1 |
| 55 | 8.717-427.0 | Insulation, Blanket w/ASJ Foil, 2 Sides | 1.25 SF |
| 56 | 8.717-696.0 | Cap Valve w/ 1/4 Gauge Port, LX Series | 1 |
| 57 | 8.707-218.0 | Valve, 3/8" Ball, 2-Way, Brass | 1 |

EXPLODED VIEW

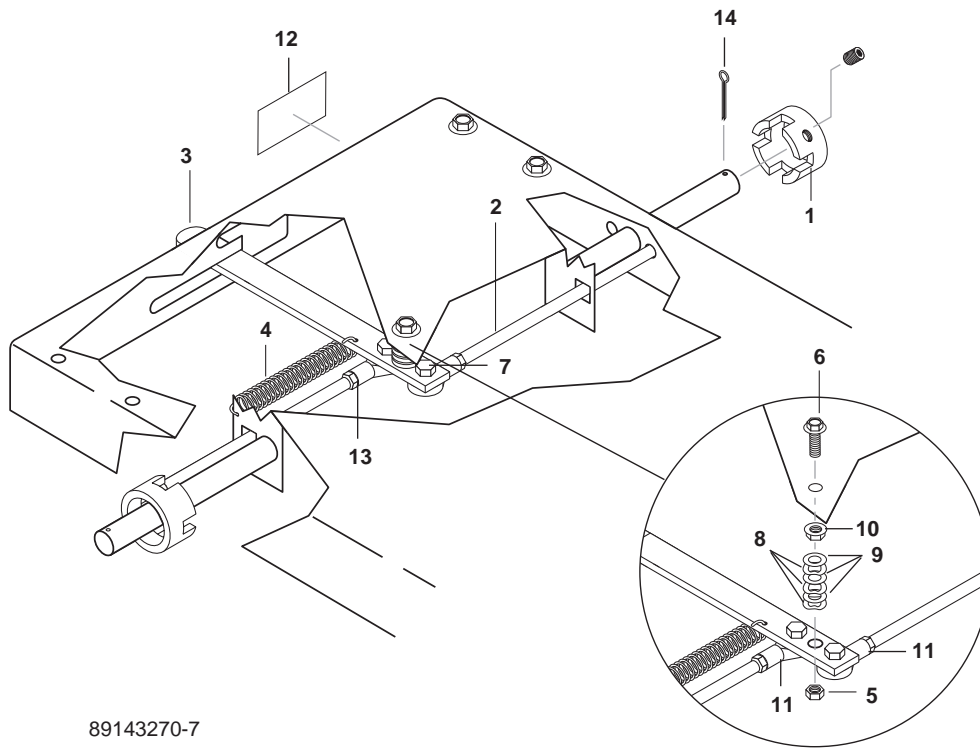
SJGDG-3020 PARTS LIST

| ITEM | PART NO. | DESCRIPTION | QTY |
|------|-------------|---|-----|
| 58 | 8.900-993.0 | Label, SJGDG-3020 w/Pulse Technology, Front Panel | 1 |
| 59 | 9.802-177.0 | Valve, 1/4" Shut-off | 1 |
| 60 | 9.802-053.0 | Bushing, Rubber Nitrile | 1 |
| 61 | 9.802-754.0 | Screw, 1/4" x 1/2" HH, NC Whiz Loc | 4 |
| 62 | 8.706-800.0 | Nipple, 3/4" Hex | 1 |
| 63 | 9.800-001.0 | Label, This Tank for Gas Only | 1 |
| 64 | 9.802-704.0 | Screw, 1/4-20x 1/2, Tri-round | 4 |
| 65 | 8.706-207.0 | Elbow, 3/8" Street | 4 |
| 66 | 8.706-167.0 | Elbow, 3/8" Female, Pipe | 1 |
| 67 | 9.802-261.0 | Hose, 3/4" Push-On | 39" |
| 68 | 9.802-259.0 | Hose, 1/2", Push-On | 16" |
| 69 | 8.706-872.0 | Nipple, 1/2" JIC x 1/4" Pipe | 1 |
| 70 | 9.803-560.0 | Screw, 3/8" x 2.0" HH, NC, Whiz Loc | 4 |
| 71 | 9.802-778.0 | Nut, Whiz Loc 5/16 Flange | 4 |
| 72 | 9.802-755.0 | Screw, 5/16" x 1-1/4" Whiz | 4 |
| 73 | 8.706-827.0 | Elbow, 1/4" Street | 1 |
| 74 | 8.900-866.0 | Label, Warning | 1 |
| 75 | 9.802-754.0 | Screw, 1/4" x 1/2" HH NC, Whiz Loc | 2 |
| 76 | 9.802-773.0 | Nut, 1/4" ESNA, NC | 2 |
| 77 | 9.802-802.0 | Washer, 1/4", Flat, SAE | 2 |
| 78 | 8.931-131.0 | Bracket, Pump Support, GX (Use SJGPG-3016 Bracket that comes with Pump) | 1 |
| 79 | 8.706-832.0 | Elbow, 3/4" Street | 1 |
| 80 | 8.706-800.0 | Nipple, 3/4" Hex | 1 |

| ITEM | PART NO. | DESCRIPTION | QTY |
|------|-------------|--|-----|
| 81 | 8.707-062.0 | Strainer, 3/4" Basket, 40 Mesh | 1 |
| 82 | 9.802-744.0 | Bolt, 10mm x 20mm | 2 |
| 83 | 9.802-816.0 | Washer, 7/16" Lock | 2 |
| 84 | 9.800-008.0 | Label, Danger | 1 |
| 85 | 9.802-770.0 | Screw, 1/4" x 1" BHSOC CS | 2 |
| 86 | 9.802-775.0 | Nut, 1/4" Whiz Loc | 1 |
| 87 | 9.802-705.0 | Bolt, 1/4" x 1" Carriage | 1 |
| 88 | 8.900-376.0 | Label, Use 90W Gear Lube | 1 |
| 89 | 9.802-802.0 | Washer, 1/4" Flat SAE | 2 |
| 90 | 9.802-773.0 | Nut, 1/4" ESNA, NC | 2 |
| 91 | 9.802-776.0 | Nut, 5/16" ESNA NC | 2 |
| 92 | 8.718-980.0 | Washer, 5/16" Flat, SAE | 2 |
| 93 | 8.900-967.0 | Tag, Caution, No Oil in Engine | 1 |
| 94 | 8.718-630.0 | Belt, 5/16-24" x 1-1/4" NF, HH | 4 |
| 95 | 9.802-813.0 | Washer, 5/16", Lock, Split Ring | 4 |
| 96 | 8.718-980.0 | Washer, 5/16", Flat, SAE | 4 |
| 97 | 9.802-830.0 | Screw, Hex, 1/4"-20 x 1/2" TF | 1 |
| 98 | 8.900-994.0 | Label, SJGDG-3020 w/Pulse Technology, Rear Panel | 1 |
| 99 | 9.800-006.0 | Label, "Hot/Caliente" w/Arrows Warning | 1 |
| 100 | 8.706-742.0 | Plug, Garden Hose Adapter | 1 |
| 101 | 9.802-810.0 | Washer, 5/8" Flat, SAE | 2 |
| 102 | 8.901-120.0 | Tag, Water Temp to Pump | 1 |
| 103 | 8.904-457.0 | Chemical Injector Assy, Shark® Jetter 5-8 GPM | 1 |

▲ Not Shown

FOOT BRAKE ASSEMBLY AND PARTS LIST



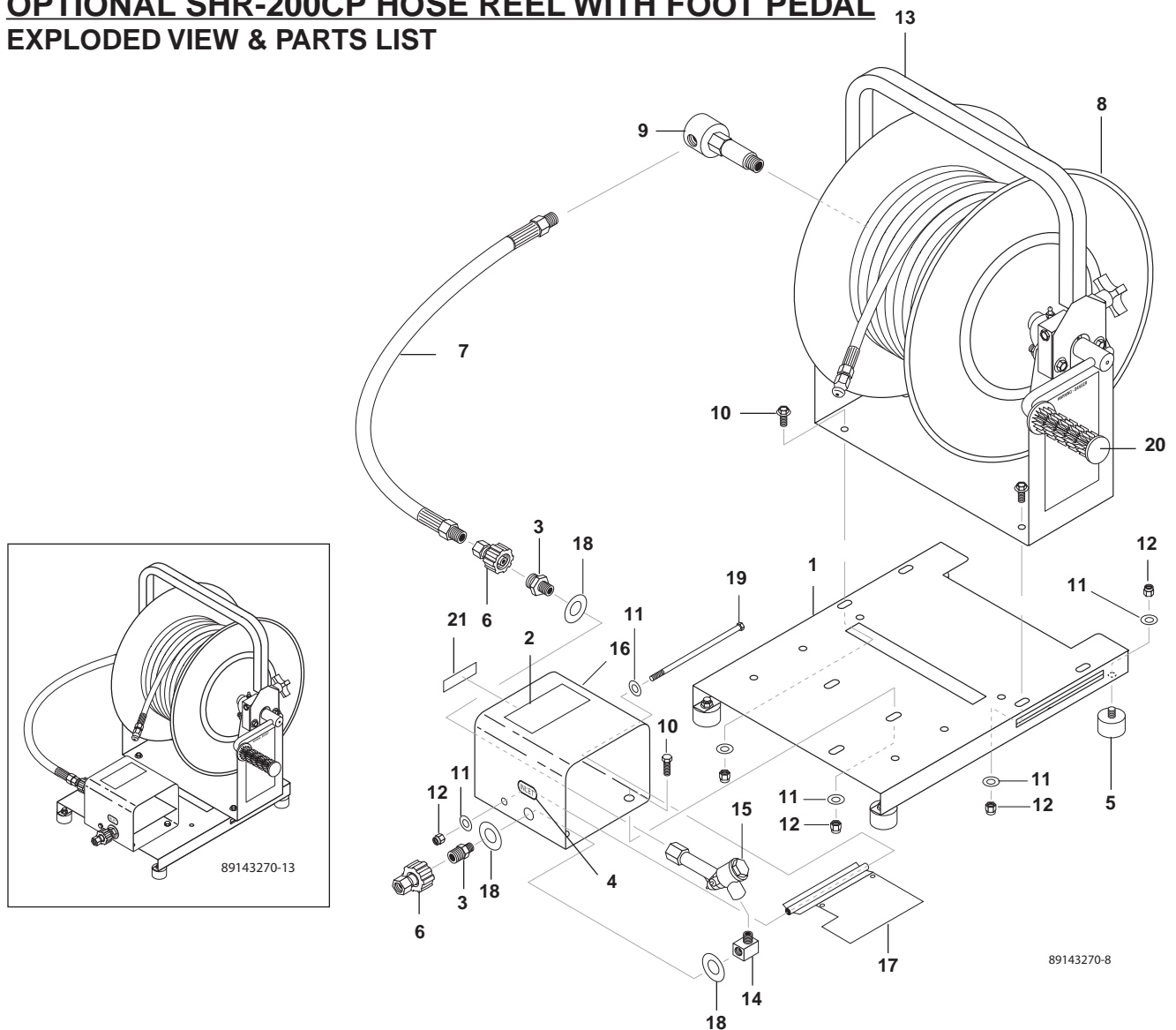
89143270-7

| ITEM | PART NO. | DESCRIPTION | QTY |
|------|-------------|--------------------------------|-----|
| 1 | 8.719-924.0 | Collar, Brake Lock | 2 |
| 2 | 8.719-926.0 | Rod, Brake, SJGPG-3016 | 2 |
| 3 | 8.911-661.0 | Bracket, Brake | 1 |
| 4 | 8.719-113.0 | Spring, SJGPG-3016 Brake | 1 |
| 5 | 8.725-395.0 | Nut, 3/8", ESNA, NC | 1 |
| 6 | 9.803-560.0 | Screw, 3/8" x 2", Whiz Loc | 1 |
| 7 | 9.802-768.0 | Screw, 3/8" x 1-1/4", Whiz Loc | 2 |
| | 8.725-395.0 | ▲ Nut, 3/8" ESNA | 2 |
| 8 | 8.719-018.0 | ▲ Washer, 3/8" Wave | 3 |
| 9 | 8.725-394.0 | Washer, 3/8" SAE, Flat | 3 |
| 10 | 9.802-781.0 | Nut, 3/8", Flange, Whiz Loc | 1 |

| ITEM | PART NO. | DESCRIPTION | QTY |
|------|-------------|----------------------------------|-----|
| 11 | 8.719-121.0 | Linkage, 3/8 Joint, Jetter Brake | 2 |
| 12 | 8.900-980.0 | Label, Brake | 1 |
| 13 | 8.718-890.0 | Nut, 3/8-24, Hex NF | 2 |
| 14 | 8.719-058.0 | Pin, 1/8" x 1" Cotter | 4 |

▲ Not Shown

OPTIONAL SHR-200CP HOSE REEL WITH FOOT PEDAL EXPLODED VIEW & PARTS LIST

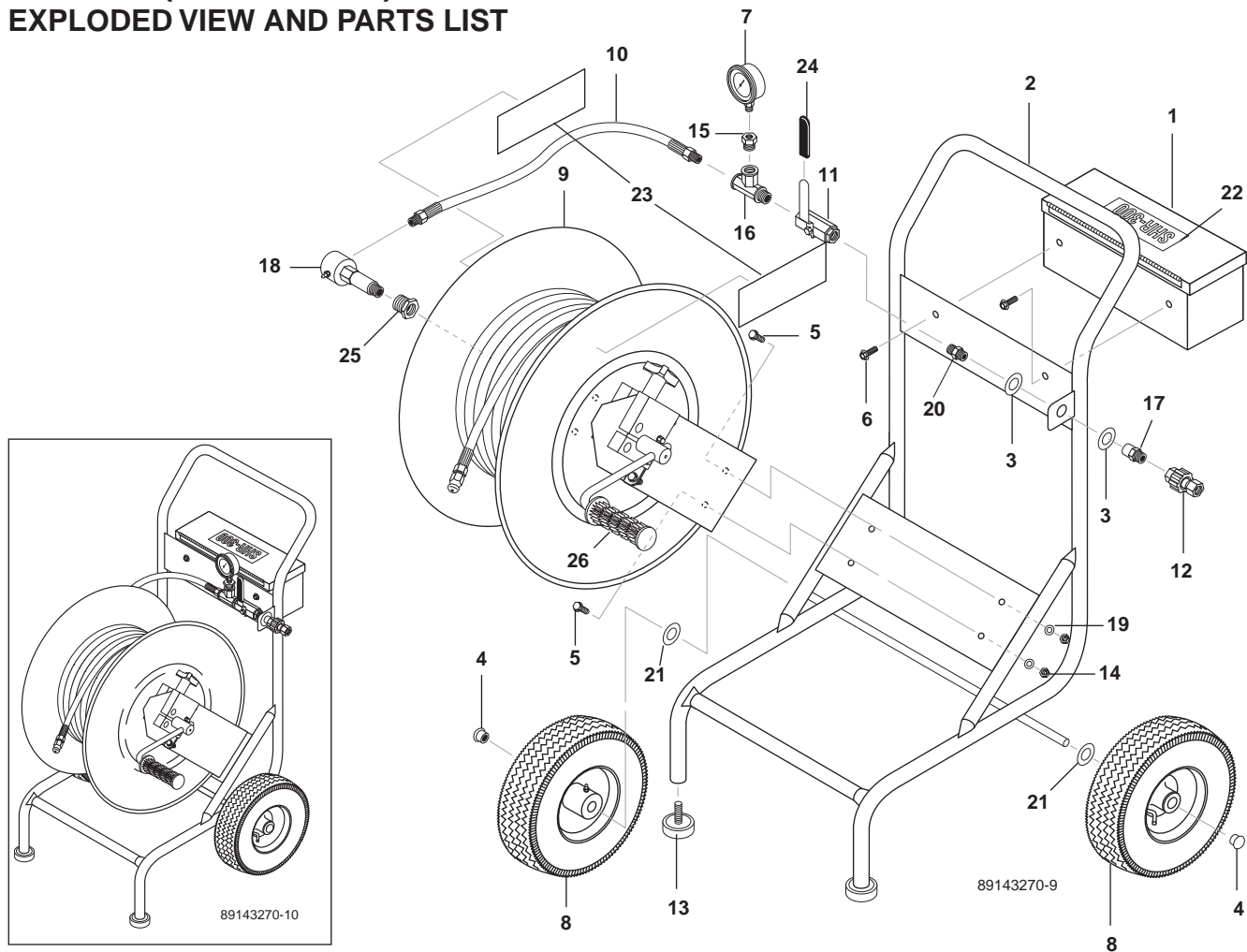


| ITEM | PART NO. | DESCRIPTION | QTY |
|------|-------------|---|-----|
| 1 | 8.911-637.0 | Bracket, Hose Reel Mount | 1 |
| 2 | 8.940-374.0 | Label, SHR-200 | 1 |
| 3 | 8.707-186.0 | Nipple, 1/4" x M22, Twist | 2 |
| 4 | 8.940-349.0 | Label, Inlet | 1 |
| 5 | 8.706-519.0 | Foot, Rubber | 4 |
| 6 | 8.707-182.0 | Coupler, 3/8" Female Screw Type 7640 | 2 |
| 7 | 8.918-188.0 | Hose, 3/8" x 17.5", 1 Wire, 3/8" MNPT(SLD) x 3/8" MNPT(SWL) | 1 |
| 8 | 8.711-866.0 | Hose Reel, 13" | 1 |
| 9 | 8.711-874.0 | Swivel, 3/8" x 3/8" | 1 |
| 10 | 9.803-551.0 | Screw, 5/16" x 3/4" Whiz Loc | 7 |

| ITEM | PART NO. | DESCRIPTION | QTY |
|------|-------------|--------------------------------|-----|
| 11 | 8.718-980.0 | Washer, 5/16" | 13 |
| 12 | 9.802-776.0 | Nut, 5/16" ESNA | 12 |
| 13 | 8.911-636.0 | Hose Reel Guard | 1 |
| 14 | 8.706-827.0 | Elbow, 1/4" Street | 1 |
| 15 | 8.718-436.0 | Valve Assy, Complete | 1 |
| 16 | 8.911-654.0 | Cover, Welded Assy. Foot Valve | 1 |
| 17 | 8.911-655.0 | Plate, Foot Valve Assy | 1 |
| 18 | 9.802-800.0 | Washer, 1/2" Flat | 3 |
| 19 | 8.718-640.0 | Bolt, 5/16" x 6-1/2" HH, NC | 1 |
| 20 | 9.802-069.0 | Grip, 1" Handle, Waffle | 1 |
| 21 | 8.940-343.0 | Label, Discharge | 1 |

SHR-300 (SJGPG-3016)

EXPLODED VIEW AND PARTS LIST

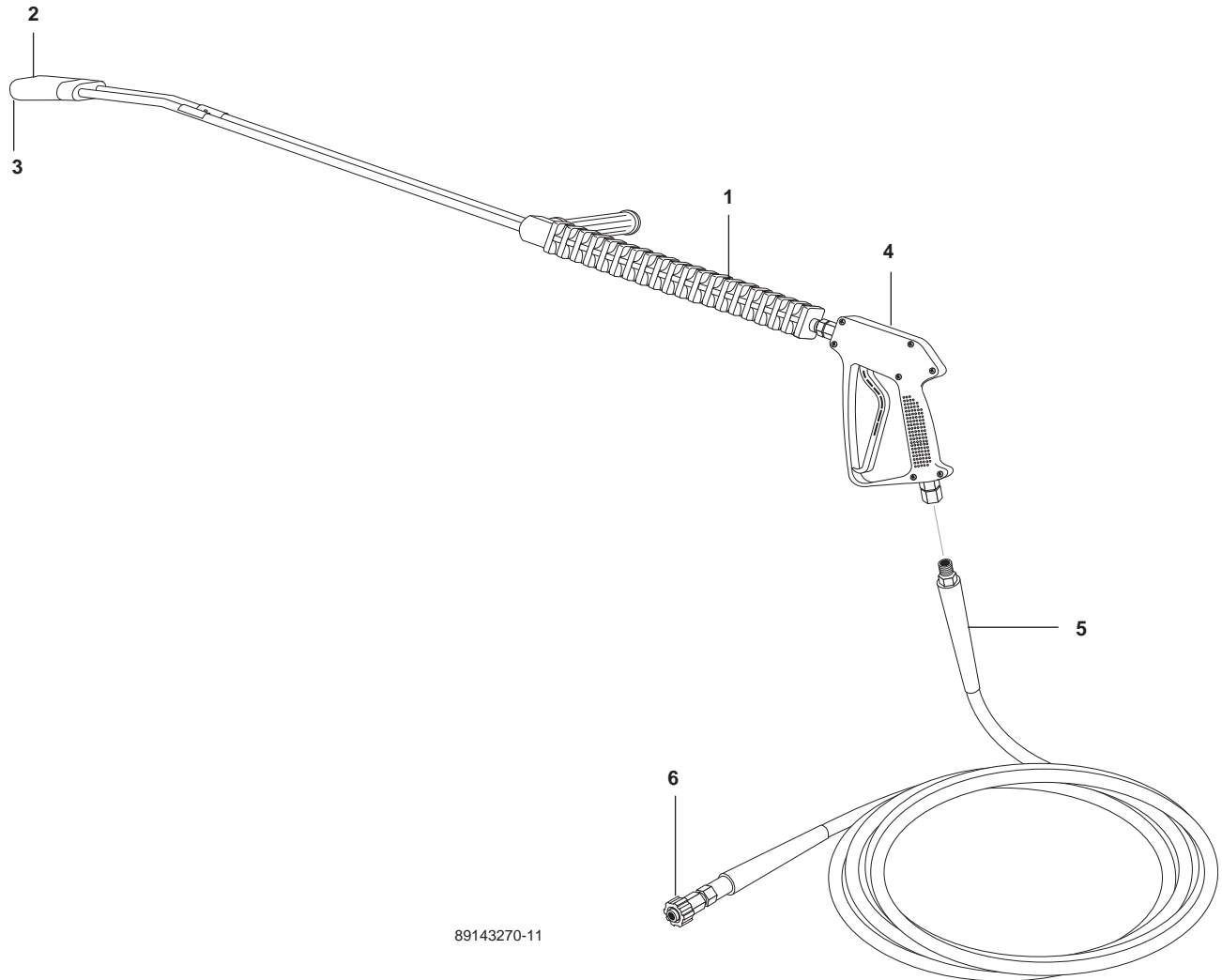


| ITEM | PART NO. | DESCRIPTION | QTY |
|------|-------------|--|-----|
| 1 | 8.911-665.0 | Assy, Tool Box, Orange | 1 |
| 2 | 8.911-642.0 | Assy, Frame, Shark® SHR-300 1 | |
| 3 | 8.719-007.0 | Washer, 3/4" x 1-1/2", .102 THK Brass | 2 |
| 4 | 8.718-848.0 | Cap, 5/8" Axle | 2 |
| 5 | 9.803-551.0 | Screw, 5/16" x 3/4" Whiz | 4 |
| 6 | 9.802-754.0 | Screw, 1/4" x 1/2" HH NC, Whiz Loc | 2 |
| | 9.802-773.0 | ▲ Nut, 1/4" ESNA | 2 |
| | 9.802-802.0 | ▲ Washer, 1/4" Flat, SAE | 2 |
| 7 | 8.712-141.0 | Gauge, Pressure 0-5000 PSI | 1 |
| 8 | 9.802-270.0 | Wheel & Tire Assy, 4" Tubeless Silver Rim, 5/8" Hub | 2 |
| 9 | 8.711-865.0 | Hose Reel, 18", General Wire | 1 |
| 10 | 8.918-195.0 | Hose, 3/8" x 23", 1 Wire 3/8" SMNPT x 3/8" SWMNPT | 1 |
| 11 | 8.707-204.0 | Valve, 3/8" Ball, Steel | 1 |

| ITEM | PART NO. | DESCRIPTION | QTY |
|------|-------------|---|-----|
| 12 | 8.707-182.0 | Coupler, 3/8" Female Screw-Type 7640 | 1 |
| 13 | 8.706-511.0 | Foot, Rubber (Crutch) | 2 |
| 14 | 9.802-776.0 | Nut, 5/16" ESNA | 4 |
| 15 | 8.706-297.0 | Bushing, 3/8" x 1/4" Steel | 1 |
| 16 | 8.706-234.0 | Tee, 3/8" Street | 1 |
| 17 | 8.707-184.0 | Nipple, 3/8" FX M22, Twist Coupler | 1 |
| 18 | 8.711-875.0 | Swivel, 1/2" x 3/8" | 1 |
| 19 | 8.718-980.0 | Washer, 5/16" Flat | 4 |
| 20 | 8.705-974.0 | Nipple, 3/8" Hex Steel | 1 |
| 21 | 9.802-810.0 | Washer, 5/8" Flat, SAE | 2 |
| 22 | 8.940-342.0 | Label, SHR-300 | 1 |
| 23 | 8.900-862.0 | Label, Logo | 2 |
| 24 | 8.706-690.0 | Cover, Handle, LG | 1 |
| 25 | 8.706-294.0 | Bushing, 1/2" x 3/8", Steel | 1 |
| 26 | 9.802-069.0 | Grip, 1" Handle, Waffle | 1 |

HOSE AND SPRAY GUN ASSEMBLY

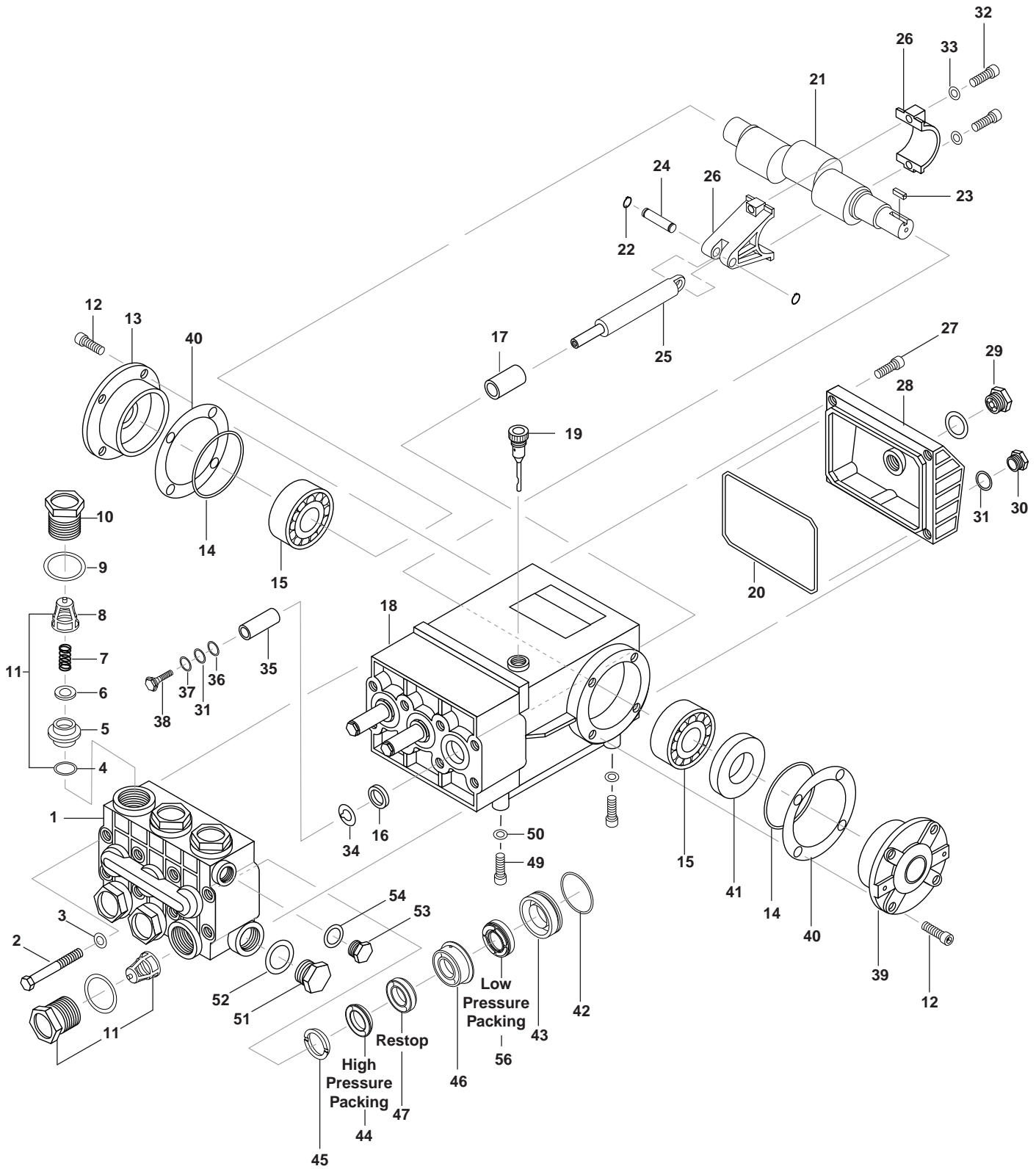
EXPLODED VIEW AND PARTS LIST SJGDG-3020 • SJGPG-3016



| ITEM | PART NO. | DESCRIPTION | QTY |
|------|-------------|---|-----|
| 1 | 8.904-454.0 | Wand, VP ARO, Soap Nozzle (SJGDG-3020) | 1 |
| | 8.904-452.0 | Wand, VP, ARO, Soap & 2506 (SJGPG-3016) | 1 |
| 2 | 8.711-436.0 | Nozzle Only, 1/4" MEG 2509 (SJGDG-3020) | 1 |
| | 8.711-408.0 | Nozzle Only, SA, 1/4" Meg-2506 (SJGPG-3016) | 1 |
| 3 | 8.711-457.0 | Nozzle Only, H-1/4"-U-6540, VEEJET (SJGDG-3020) | 1 |
| | 8.711-457.0 | Nozzle Only, H-1/4"-U-6540, VeeJet (SJGPG-3016) | 1 |

| ITEM | PART NO. | DESCRIPTION | QTY |
|------|-------------|--|-----|
| 4 | 8.710-384.0 | Gun, ST-1500, 5000 PSI 10.4 GPM | 1 |
| 5 | 8.916-740.0 | Hose, 3/8" x 50', 1 Wire, Tuff-Skin 3/8" MPT x 3/8" MPTS | 1 |
| 6 | 8.707-182.0 | Coupler, 3/8" Female Screw-Type 7640 | 1 |

PUMP MODEL NO. TS-2021 #8.715-337.0
EXPLODED VIEW



PUMP MODEL NO. TS-2021 #8.715-337.0
EXPLODED VIEW PARTS LIST, SPECS

| ITEM | PART NO. | DESCRIPTION | QTY |
|------|------------|---|-----|
| 1 | 1-47120941 | Pump Head | 1 |
| 2 | 1-99320600 | Screws | 8 |
| 3 | 1-96702000 | Washers | 8 |
| 4 | 1-90384100 | O Rings (Kit 1-0001) | 6 |
| 5 | 1-36200366 | Valve Seats (Kit 1-0001) | 6 |
| 6 | 1-36200176 | Valve Plates (Kit 1-0001) | 6 |
| 7 | 1-94737600 | Springs (Kit 1-0001) | 6 |
| 8 | 1-36200251 | Valve Guides (Kit 1-0001) | 6 |
| 9 | 1-90384700 | O Rings (Kit 1-0005) | 6 |
| 10 | 1-98222200 | Valve Caps (Kit 1-0005) | 6 |
| 11 | 1-36703201 | Valve Assembly (Available only in Kit 1-0001) | 6 |
| 12 | 1-99303900 | Screws | 8 |
| 13 | 1-47150122 | Side Crankcase Cover (Closed) | 1 |
| 14 | 1-90391300 | O-Rings | 2 |
| 15 | 1-91837500 | Tapered Roller Bearings | 2 |
| 16 | 1-90162500 | Oil Seals (Available only in Kit 1-0002) | 3 |
| 17 | 1-90912600 | Bushings | 3 |
| 18 | 1-47010422 | Crankcase | 1 |
| 19 | 1-98210600 | Oil Dip Stick | 1 |
| 20 | 1-90392200 | Cover Gasket | 1 |
| 21 | 1-47021735 | Crankshaft | 1 |
| 22 | 1-90055700 | Snap Rings | 6 |
| 23 | 1-91489000 | Key | 1 |
| 24 | 1-97738000 | Wrist Pins | 3 |
| 25 | 1-47050356 | Piston Guides | 3 |
| 26 | 1-47030001 | Connecting Rods | 3 |
| 27 | 1-99191200 | Screws | 5 |
| 28 | 1-47160122 | Rear Crankcase Cover | 1 |
| 29 | 1-97596800 | Oil Level Indicator | 1 |
| 30 | 1-98204100 | Cap | 1 |
| 31 | 1-90358500 | O Rings (Kit 1-0006) | 4 |
| 32 | 1-99309900 | Screws | 6 |
| 33 | 1-96701400 | Washers | 6 |
| 34 | 1-96728600 | Washers (Kit 1-0006) | 3 |

| ITEM | PART NO. | DESCRIPTION | QTY |
|------|------------|--|-----|
| 35 | 1-47040409 | Pistons | 3 |
| 36 | 1-90506700 | Anti-Extrusion Rings (Kit 1-0006) | 3 |
| 37 | 1-96728000 | Washers (Kit 1-0006) | 3 |
| 38 | 1-47219566 | Piston Screws (Kit 1-0006) | 3 |
| 39 | 1-47150022 | Side Crankcase Cover (Open) | 1 |
| 40 | 1-97567800 | Shims | 2 |
| 41 | 1-90164800 | Oil Seal (Kit 1-0003) | 1 |
| 42 | 1-90361600 | O Rings (Kit 1-0028) | 3 |
| 43 | 1-47080570 | Packing Retainers (Kit 1-0028) | 3 |
| 44 | 1-90270500 | Packings, High Pressure Seal (Kits 1-0008, 1-0028, 1-0069) | 3 |
| 45 | 1-47100051 | Head Rings (Kits 1-0007, 1-0028) | 3 |
| 46 | 1-47216970 | Intermediate Rings (Kit 1-0028) | 3 |
| 47 | 1-90270400 | Restop (Kit 1-0028, 1-0069) | 3 |
| 49 | 1-99364400 | Screws | 4 |
| 50 | 1-96710600 | Washers | 4 |
| 51 | 1-98217600 | Cap | 1 |
| 52 | 1-96751400 | Washer | 1 |
| 53 | 1-98210000 | Cap | 1 |
| 54 | 1-96738000 | Washer | 1 |
| 56 | 1-90271000 | Packings, Low Pressure Seal (Kits 1-0008, 1-0028, 1-0069) | 3 |

For proper pump repair and ease of packing insertion the following tool is recommended:

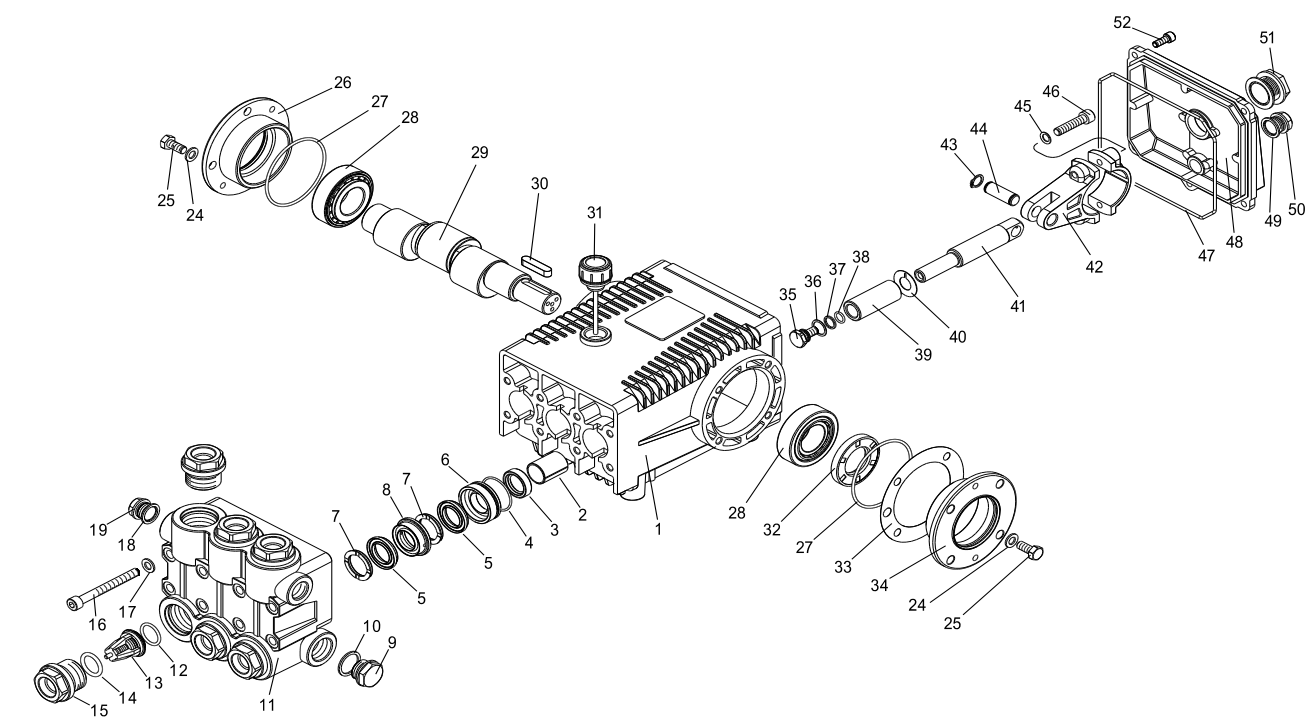
1-ZMVT00L Packing Insertion Tool

Crankcase Oil Capacity, 40.6 oz.

| TORQUE SPECS | | | |
|--------------|---------|------|---------|
| Item | Ft. Lbs | Item | Ft. Lbs |
| 2 | 22.1 | 32 | 14.7 |
| 10 | 73.7 | 38 | 14.7 |
| 12 | 14.7 | 49 | 29.4 |
| 27 | 7.3 | 51 | 29.4 |
| 29 | 13.2 | 53 | 29.4 |
| 30 | 14.7 | | |

| KIT NO. | 1-0001 | 1-0002 | 1-0003 | 1-0005 | 1-0006 | 1-0007 | 1-0008 | 1-0028 | 1-0069 |
|-------------------|-------------------|--------|--------|--------|--------------------|--------|--------|----------------------------|------------|
| Assembly (Pos. #) | 4, 5, 6, 7, 8, 11 | 16 | 41 | 9, 10 | 31, 34, 36, 37, 38 | 45 | 44, 56 | 42, 43, 44, 45, 46, 47, 56 | 44, 47, 56 |
| # of Assemblies | 6 | 3 | 2 | 6 | 3 | 6 | 3 | 1 | 3 |

LEGACY GX 8030R PUMP #8.904-962.0
EXPLODED VIEW



| TORQUE SPECS | |
|--------------|----------|
| ITEM # | FT. LBS. |
| 15 | 95 |
| 16 | 60 |
| 25 | 8 |
| 35 | 10 |
| 46 | 30 |
| 52 | 7.6 |

LEGACY GX 8030R PUMP #8.904-962.0

PARTS LIST

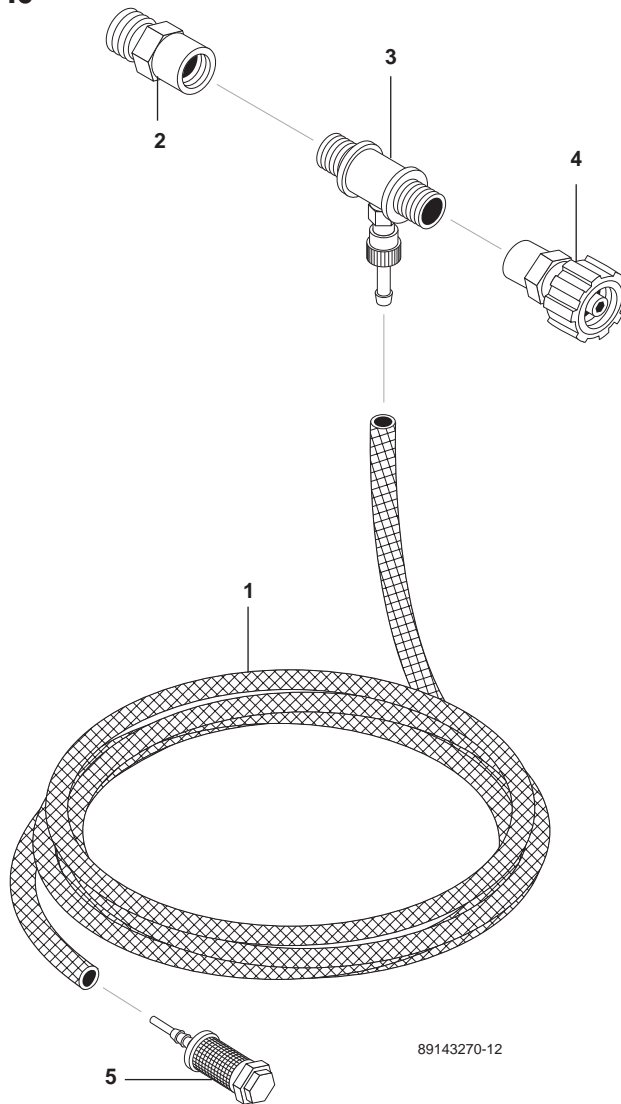
| ITEM | PART NO. | DESCRIPTION | QTY | ITEM | PART NO. | DESCRIPTION | QTY |
|------|-------------|------------------------|-----|--------------------------------|-------------|-----------------------|-----|
| 1 | 9.803-163.0 | Crankcase | 1 | 35* | 9.803-235.0 | Plunger Bolt | 3 |
| 2 | 9.803-195.0 | Plunger Guide | 3 | 36* | 9.802-886.0 | Copper Spacer | 3 |
| 3* | 9.804-587.0 | Plunger Oil Seal | 3 | 37* | 9.803-187.0 | O-Ring Ø1.78x10.82 | 3 |
| 4* | 9.803-190.0 | O-Ring Ø1.78 x 37.82 | 3 | 38* | 9.803-154.0 | Teflon Ring | 3 |
| 5* | 8.717-027.0 | V Seal, Dia. 25mm | 6 | 39* | 8.717-296.0 | Plunger 25mm | 3 |
| 6* | 8.717-309.0 | Pressure Ring 25mm | 3 | 40* | 9.802-887.0 | Copper Spacer | 3 |
| 7* | 8.717-165.0 | Support Ring 25mm | 6 | 41 | 9.803-143.0 | Plunger Rod | 3 |
| 8* | 8.717-176.0 | Intermediate Ring | 3 | 42 | 9.803-157.0 | Connecting Rod | 3 |
| 9 | 9.803-285.0 | Brass Plug, 3/4 | 1 | 43 | 9.802-912.0 | Snap Ring | 6 |
| 10 | 9.803-286.0 | Copper Washer 3/4 | 1 | 44 | 9.802-915.0 | Connecting Rod Pin | 3 |
| 11 | 9.802-935.0 | Manifold Housing | 1 | 45 | 9.802-889.0 | Spring Washer | 6 |
| 12* | 8.911-626.0 | O-Ring Ø2.62 x 23.47 | 6 | 46 | 9.802-937.0 | Connecting Rod Screw | 6 |
| 13* | | Valve Assembly | 6 | 47 | 9.803-194.0 | O-Ring Ø2.62 x 152.07 | 1 |
| 14* | 9.803-287.0 | O-Ring Ø3.53 x 25.80 | 6 | 48 | 9.803-166.0 | Crankcase Cover | 1 |
| 15 | 9.802-930.0 | Valve Plug | 6 | 49 | 9.803-197.0 | Gasket, G3/8 | 1 |
| 16 | 9.802-942.0 | Manifold Stud Bolt | 8 | 50 | 9.802-925.0 | Brass Plug 3/8 | 1 |
| 17 | 9.802-890.0 | Lock Washer | 8 | 51 | 9.803-202.0 | Sight Glass G3/4 | 1 |
| 18 | 9.803-199.0 | Copper Washer 1/2 | 1 | 52 | 9.802-939.0 | Cover Screw | 5 |
| 19 | 9.802-926.0 | Brass Plug 1/2 | 1 | * Available in kit (See below) | | | |
| 24 | 9.802-884.0 | Washer | 8 | | | | |
| 25 | 9.802-944.0 | Flange Screw | 8 | | | | |
| 26 | 9.803-182.0 | Closed Bearing Housing | 1 | | | | |
| 27 | 9.803-186.0 | O-Ring Ø2.62 x 71.12 | 2 | | | | |
| 28 | 9.803-160.0 | Roller Bearing | 2 | | | | |
| 29 | 9.803-288.0 | Crankshaft (LX 8030) | 1 | | | | |
| | 9.803-289.0 | Crankshaft (LX 1025) | 1 | | | | |
| 30 | 9.803-167.0 | Crankshaft Key | 1 | | | | |
| 31 | 9.802-923.0 | Oil Dip Stick | 1 | | | | |
| 32 | 9.803-139.0 | Crankshaft Seal | 1 | | | | |
| 33 | 9.803-177.0 | Shim | 2 | | | | |
| 34 | 9.803-181.0 | Bearing Housing | 1 | | | | |

| Kit Numbers | 9.802-612.0 | 9.802-613.0 | 9.802-614.0 | 9.802-608.0 | 9.802-606.0 |
|---|-----------------------|-----------------------|---------------------------|----------------|----------------------|
| Kit Description | Plunger Seal 25 mm | Seal Packing 25 mm | Plunger 25 mm | Complete Valve | Plunger Oil Seals |
| Items Numbers Included | 4, 5, 7 | 4, 5, 6, 7, 8 | 35, 36, 37, 38, 39, 40 | 12, 13, 14 | 3 |
| Number Of Cylinders Kit Will Service | 3 | 1 | 1 | 6 | 3 |

INJECTOR SCREW COUPLER

SJGPG-3016 8.904-458.0

SJGDG-3020 8.904-457.0



89143270-12

| ITEM | PART NO. | DESCRIPTION | QTY |
|------|-------------|--|-----|
| 1 | 9.802-252.0 | Hose, 1/4" x 1/2" Braided Vinyl | 1 |
| 2 | 8.707-184.0 | Plug, 3/8" Screw Type Coupler 7642 | 1 |
| 3 | 8.709-418.0 | Injector, Detergent Adj., 3/8" M x M, 3-5 GPM (SJGPG-3016) | 1 |
| | 8.904-194.0 | Injector, Detergent, Adj. 5-8 GPM (SJGDG-3020) | 1 |
| 4 | 8.707-182.0 | Coupler, 3/8" Female Screw Type 7640 | 1 |
| 5 | 8.707-057.0 | Strainer, 1/4" | 1 |

TROUBLESHOOTING

These troubleshooting procedures cover pump malfunctions, delivery problems and charge system malfunction.

Warning: Before attempting any repairs or maintenance, make sure machine is shut off.

| PROBLEM | POSSIBLE CAUSE | REPAIR |
|--|--|---|
| LOW PRESSURE | Worn or oversized nozzle | Replace worn nozzle. Check nozzle size. |
| | Clogged water and/or detergent inlet strainer | Clean or replace strainers. |
| | Worn or damaged piston cups | Replace piston cups. |
| | Worn or damaged inlet or discharge valve | Replace worn valve poppets or valve springs. |
| | Dirt or foreign particles in valve assembly | Remove any dirt particles. |
| | Air leak in inlet plumbing | Locate air leak. Re-seal connection or replace damaged port. |
| ROUGH OPERATION WITH LOSS OF PRESSURE | Restricted inlet plumbing or air leak in inlet plumbing | Replace clogged inlet fittings. Check supply hose and ensure adequate water supply. |
| | Damaged piston, cup or pump valve | Replace any damaged pump parts and clean out any foreign particles. |
| | Clogged nozzles | Clean or replace nozzles. |
| WATER LEAKAGE AT INTAKE MANIFOLD OR CRANKCASE | Worn manifold seals, pistons or O-rings. Or, condensation inside crankcase | Replace seals, sleeves or O-rings. Change oil at regular intervals. |
| | Inadequate water supply to pump creating a vacuum lock | Ensure adequate tap water supply. Clear inlet filter. |
| OIL LEAKS | Worn pistons and/or leaking crank seals, crankcase cover seal or drain plugs | Replace seals, sleeves or O-Rings. |
| EXCESSIVE WEAR | Worn or loose bearings | Replace bearings. Check bearing seals, spacers and retainers. Replace any worn parts. |
| SHORT PISTON CUP LIFE | Scored cylinders from pumping acids | Replace cylinders. DO NOT PUMP ACID SOLUTIONS. For acid application, ask your dealer for a Pump Saver Injector. |
| | Abrasive particles in fluid being pumped | Replace water and detergent strainers if damaged or missing. Install additional filter if fine abrasives are still evident. |
| | Operator(s) running pump without water supply | do not allow washer to be run without proper water supply. |
| | Hot water in pump | Do not run in bypass for more than 5 minutes. Do not let water supply exceed 140°F (60°C). |
| IRREGULAR SPRAY PATTERN | Worn or partially clogged nozzle | Clean or replace nozzles. |

TROUBLESHOOTING

Detergent System Malfunction

| PROBLEM | POSSIBLE CAUSE | REPAIR |
|---|--|---|
| WASHER FAILS TO DRAW DETERGENT | Detergent metering valve closed or valve clogged or defective | Open detergent metering valve, following procedure in operating instructions. |
| | Back pressure in hose (when using additional lengths of pressure hose) | Contact dealer for proper injector size when adding lengths of hose. |
| | Back pressure in pressure hose (when using dual lance wand) | Use proper size flood nozzle in dual lance wand (refer to parts breakdown). |
| | Suction tube not below liquid surface | Completely submerge suction tube and strainer in detergent solution. |
| | Clogged or damaged suction strainer | Clean or replace strainer. |
| DETERGENT SOLUTION TOO WEAK | Clogged detergent strainer | Clean or replace strainer. |
| | Air leak in detergent suction tube or inlet plumbing | Find air leak and clean or replace parts as necessary. |
| DETERGENT SOLUTION TOO CONCENTRATED | Original detergent too concentrated | Dilute product as necessary to achieve proper concentration. |
| DETERGENT IN RINSE CYCLE | Dual lance wand or adjustable nozzle holder in open position or chemical metering valve open | Close dual lance wand adjustable lance holder to achieve high pressure. Close detergent metering valve. |
| DILUTION OF DETERGENT CONCENTRATE DURING CYCLE | Worn or defective internal check valve | Repair or replace check valve or injector parts as necessary. |
| | Defective check valve in detergent tank | Replace parts as necessary |

TROUBLESHOOTING

Unloader Valve Malfunction

| PROBLEM | POSSIBLE CAUSE | REPAIR |
|---|---|-----------------------------|
| UNLOADER CYCLES | Fitting leaking downstream | Tighten/replace fitting. |
| | Piston or valve spring broken or worn | Replace parts as necessary. |
| | Clogged nozzle | Clean or replace. |
| FLUID LEAKING FROM BODY | O-ring worn or cut | Replace part as necessary. |
| UNLOADER WILL NOT COME TO PRESSURE | Foreign particle in valve | Replace or clean. |
| | Nozzle worn or wrong size | Replace part as necessary. |
| | Piston or valve worn | Replace part as necessary. |
| EXTREME PRESSURE SPIKES | Adjusting nut turned completely into unloader | Back off adjusting nut. |
| | Clogged nozzle | Clean or replace |

**LIMITED NEW PRODUCT
WARRANTY
SHARK JETTERS**



Phone: 800-771-1881
Fax: 877-526-3246
www.sharkpw.com

WHAT THIS WARRANTY COVERS

All Shark Jetters are warranted by Shark to the original purchaser to be free from defects in materials and workmanship under normal use, for the periods specified below. This Limited Warranty, subject to the exclusions shown below, is calculated from the date of the original purchase, and applies to the original components only. Any parts replaced under this warranty will assume the remainder of the pressure washer's warranty period.

FIVE YEAR PARTS AND ONE YEAR LABOR WARRANTY

Components manufactured by Shark, such as frames, handles, float tanks, and fuel tanks. Shark crankshaft pumps have a 7 year warranty on non-wear parts.

ONE YEAR PARTS AND ONE YEAR LABOR WARRANTY

All other components, excluding normal wear items as described below, will be warranted for one year on parts and labor. Parts and labor warranty on these parts will be for one year regardless of the duration of the original component manufacturer's part warranty.

WARRANTY PROVIDED BY OTHER MANUFACTURERS

Motors, generators, and engines, which are warranted by their respective manufacturers, are serviced through these manufacturers' local authorized service centers. Shark is not authorized and has no responsibility to provide warranty service for such components.

WHAT THIS WARRANTY DOES NOT COVER

This warranty does not cover the following items:

1. Normal wear items, such as nozzles, spray guns, discharge hoses, wands, quick couplers, seals, filters, gaskets, O-rings, packings, pistons, pump valve assemblies, strainers, fuses, pump protectors.
2. Any components or other devices incorporated into a Shark product that are not manufactured by Shark, including, but not limited to gasoline engines, pumps, etc.
3. Defects caused by improper or negligent operation or installation, accident, abuse, misuse, neglect, unauthorized modifications, repair or maintenance of the product by persons other than authorized representatives of Shark, including, but not limited to, the failure of the Customer to comply with recommended product maintenance schedules.
4. Shark products that have been returned by the original Customer and are ultimately re-sold by an Authorized Servicing Dealer or other sales or service outlet to another purchaser.
5. Shark products that are sold by any distributor or retailer that is not an official authorized dealer or retailer of Shark products.
6. Defects caused by acts of nature and disaster including, but not limited to, floods, fires, wind, freezing, earthquakes, tornadoes, hurricanes and lightning strikes.
7. Defects caused by water sediments, rust corrosion, thermal expansion, scale deposits or a contaminated water supply (such as water in the unit with chloride content higher than that of 80 mg/liter or use of chemicals not approved or recommended by Shark).
8. Defects caused by improper voltage, voltage spikes or power transients in the electrical supply.
9. Devices or accessories not distributed or approved by Shark.
10. Any cost of labor arising from the removal and reinstallation of the alleged defective part by Customer.
11. Transportation of the product to an Authorized Servicing Dealer, field labor, replacement rental and any freight charges.

Any components, accessories or other devices provided with the product but not manufactured by Shark (such as engines, pumps, etc.) are subject to warranties and service through their respective manufacturers authorized service centers and according to the applicable terms and conditions of such manufacturers warranties. Such components or other devices not manufactured by Shark should be referred by the Customer to an authorized service center or their respective manufacturers for repair or replacement.

THE FOREGOING WARRANTY IS IN LIEU OF ALL OTHER WARRANTIES OF ANY KIND, WHETHER ARISING BY LAW, CUSTOM OR CONDUCT. SHARK MAKES NO ADDITIONAL WARRANTIES, EITHER EXPRESSED OR IMPLIED, INCLUDING, WITHOUT LIMITATION, ANY EXPRESSED OR IMPLIED WARRANTIES OF MERCHANTABILITY OR FITNESS OF EQUIPMENT FOR A PARTICULAR PURPOSE AND ANY SUCH WARRANTIES ARE EXPRESSLY DISCLAIMED. SHARK FURTHER DISCLAIMS ANY WARRANTY THAT THE PRODUCT PURCHASED BY CUSTOMER WILL MEET ANY PARTICULAR REQUIREMENT OF CUSTOMER EVEN IF SHARK HAS BEEN ADVISED OF SUCH REQUIREMENT.

THE RIGHTS AND REMEDIES PROVIDED UNDER THIS WARRANTY ARE EXCLUSIVE AND IN LIEU OF ANY OTHER RIGHTS OR REMEDIES OF CUSTOMER. SHARK SHALL NOT UNDER ANY CIRCUMSTANCES BE LIABLE TO ANY PERSON OR ENTITY INCLUDING, BUT NOT LIMITED TO, THE CUSTOMER OR ANY END USER OF THE PRODUCT FOR ANY SPECIAL, INDIRECT, INCIDENTAL OR CONSEQUENTIAL DAMAGES OR ECONOMIC LOSS, LOSS OF PROFITS OR LOSS OF USE OF THE PRODUCT, ARISING IN CONNECTION WITH THE SALE, DELIVERY, INSTALLATION, TRAINING OR USE OF PRODUCT. SHARK'S LIABILITY, WHETHER IN CONTRACT OR IN TORT, ARISING OUT OF ANY WARRANTIES OR REPRESENTATIONS, INSTRUCTIONS OR DEFECTS FROM ANY CAUSE, SHALL BE LIMITED EXCLUSIVELY TO THE COST OF REPAIR OR REPLACEMENT PARTS UNDER AFORESAID CONDITIONS.

The purpose of the foregoing limitations on liability and Customer remedies is to protect Shark from unknown or undeterminable risks. Some states do not allow the exclusion or limitation of incidental or consequential damages, so the above limitation or exclusion may not apply to the Customer.

Shark sales and service representatives are not authorized to waive or alter the terms of this warranty, or to increase the obligations of Shark under the warranty.

Shark reserves the right to make design changes in any of its products without prior notification to the Customer.

